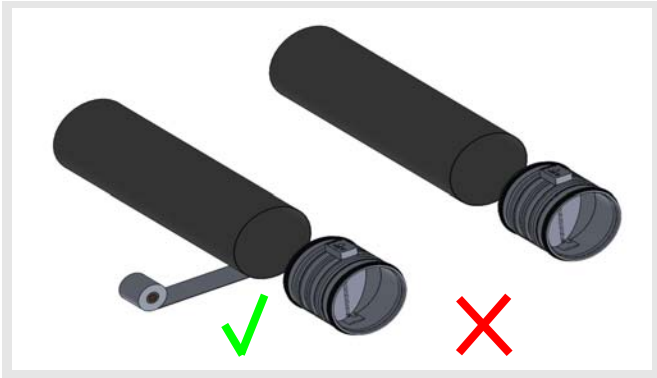


Volumetric flow stabiliser VOLKOM installation and mounting instructions

Important

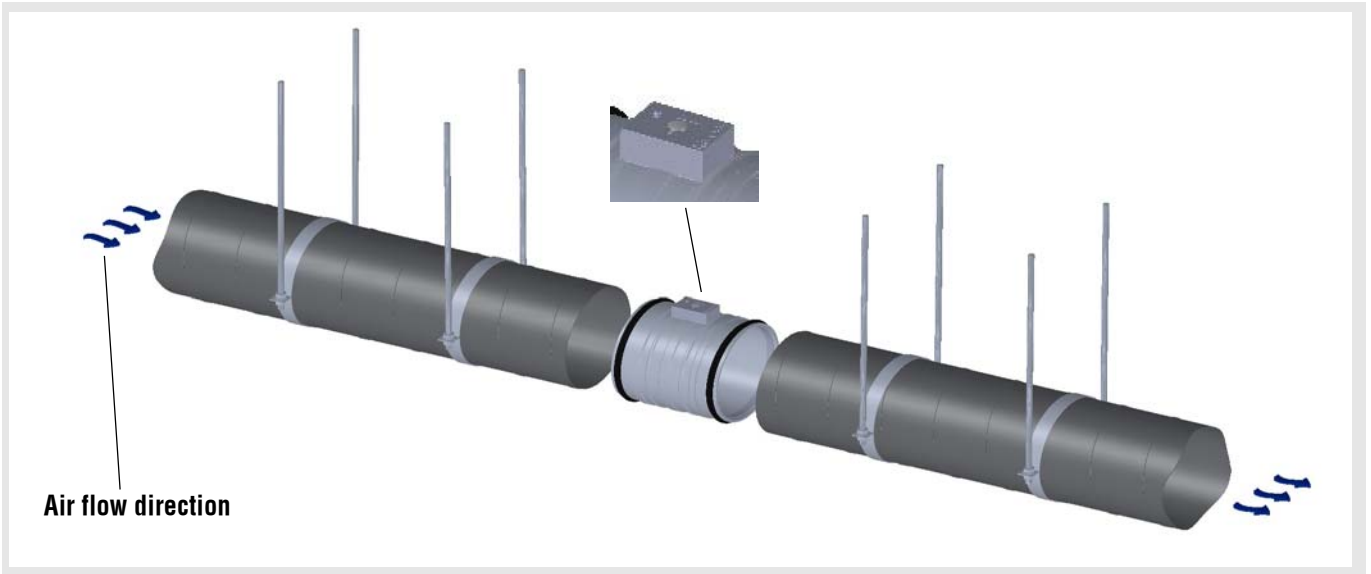


The controllers of type VOLKOM may only be mounted with a suitable sealing tape. Any other type of mounting, such as screw connections, is not allowed!

Step 1

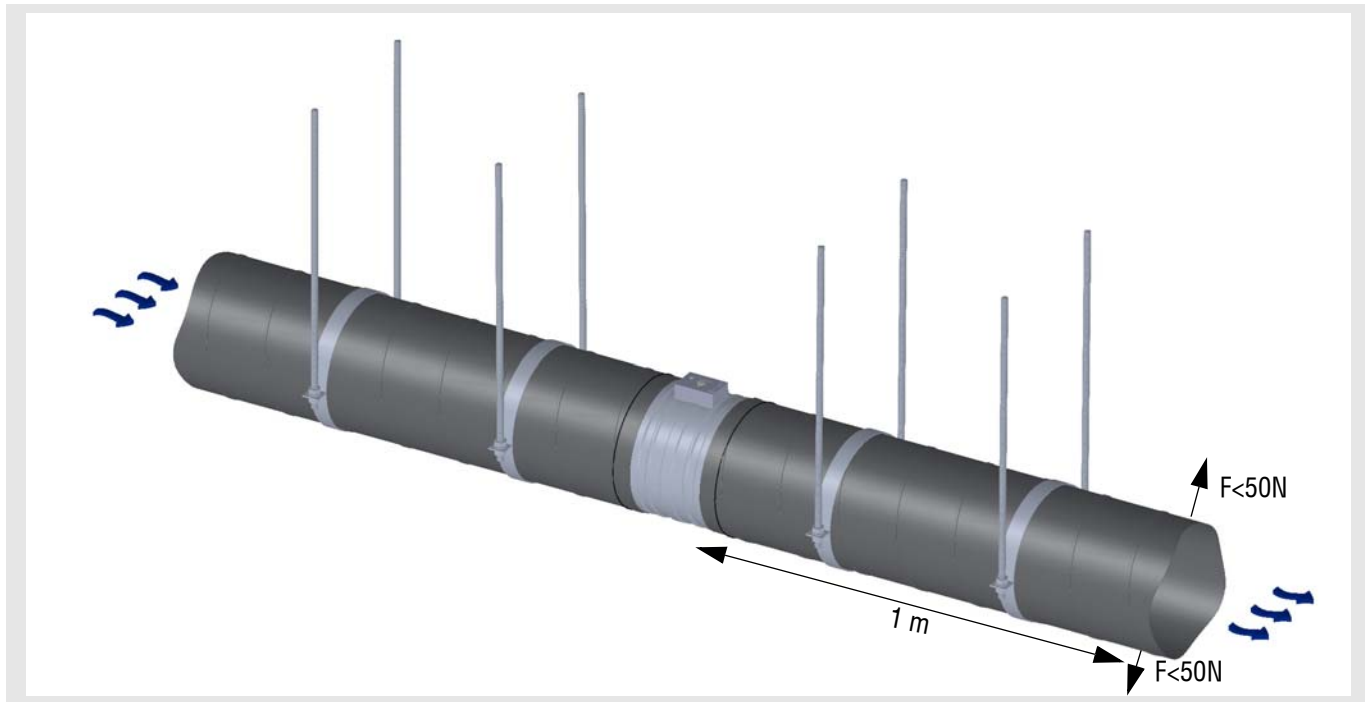


Step 2

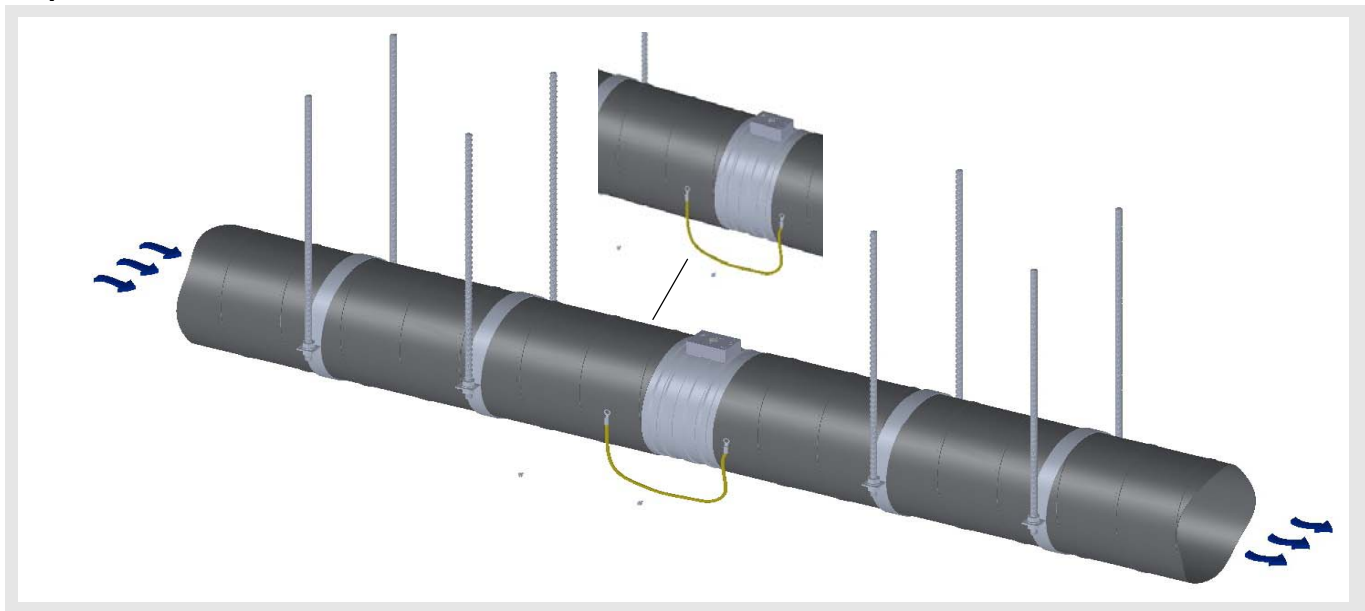


Volumetric flow stabiliser VOLKOM installation and mounting instructions

Step 3

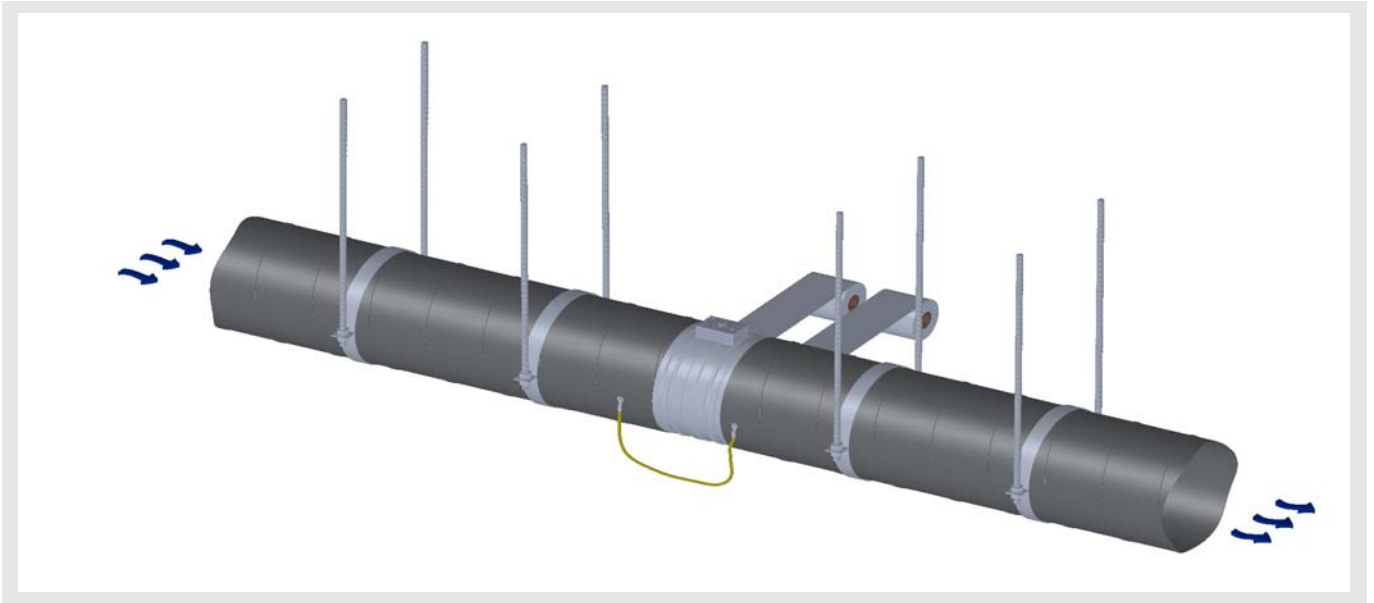


Step 4



Volumetric flow stabiliser VOLKOM installation and mounting instructions

Step 5



Step 6

