



**STV**  
Poppet valve

**Contents**

Function and use .....	2
Model .....	2
Processing.....	2
Accessories .....	2
Mounting.....	2
Dimensions .....	2
Dimensions of accessories.....	3
Assembly detail .....	3
Technical data .....	4
Weight .....	6
Legend .....	6
STV order code .....	7
Specification text .....	8

### FUNCTION AND USE

The **sheet steel** poppet valves are **suitable for use in supply air and return air installations**.

Around the poppet valve runs a cellular seal, which allows a perfect fit of the poppet valve and a secure seal.

A **mounting ring** is **supplied** for easy and quick installation of the poppet valves. This mounting ring is fastened to the ceiling with screws. **The poppet valve is then mounted to the mounting ring by means of a bayonet catch.**

the toilet valve can then be turned to achieve the required air volume. The air volume setting is fixed using a counter nut.

### MODEL

STV-Z	supply air
STV-A	Return air

### PROCESSING

#### Front frame

- Sheet steel (-SB)
  - Painted to RAL colour 9010 (white) (-9010, standard)
  - Painted to a freely selectable RAL colour (-xxxx, always with 4 digits)
- With circumferential foam seal.

#### Valve disc

- Sheet steel (-SB), painted to the colour of the front frame.

#### Threaded spindle

- Galvanised steel

#### Mounting ring

- Galvanised sheet steel.
- Fastening to the ceiling by means of screw mounting.
- With bayonet catch (for mounting the poppet valve to the mounting ring).

### ACCESSORIES

#### Panelled cover plate (-PA)

- Sheet steel, painted to the colour of the poppet valve.
- Mounting ring firmly fitted to the panelled cover plate.

#### Saddle bracket (-SA)

- Galvanised sheet steel.
- Mounting ring firmly fitted to the saddle bracket.

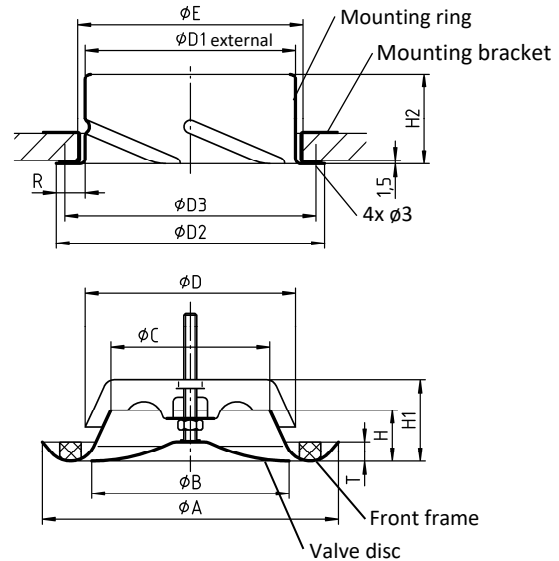
### MOUNTING

#### Screw mounting (-SM)

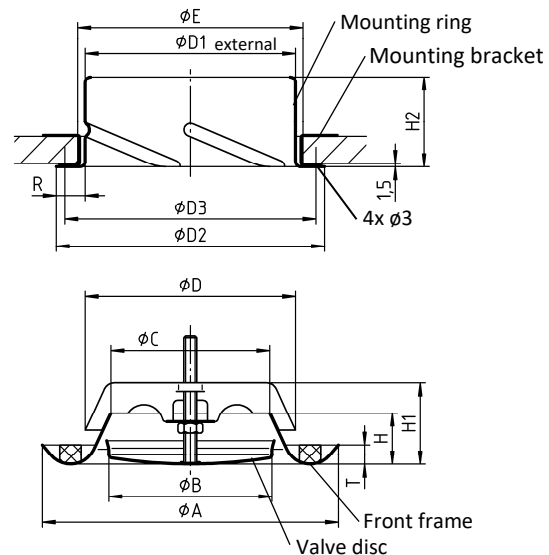
- Mounting ring fastening by means of screw mounting (-SM).
  - Without accessories: to the ceiling (with mounting bracket).
  - With accessories: firmly fitted to the panelled cover plate or saddle bracket.

### DIMENSIONS

#### STV-Z (supply air)



#### STV-A (return air)



#### Available sizes of STV-Z / STV-A

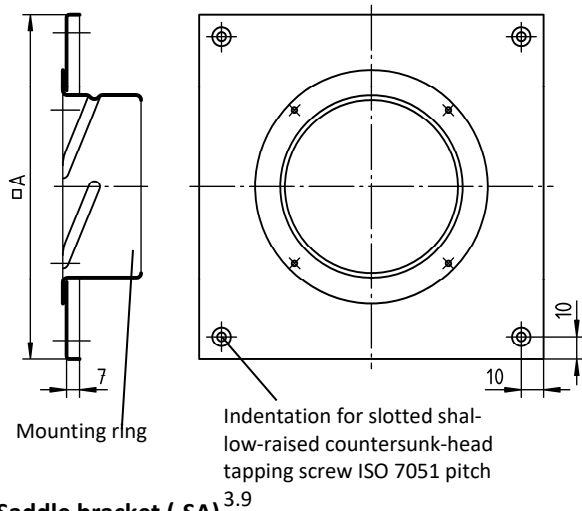
NW	Ø A	Ø B	Ø C	Ø D	T	H	H1
		STV-Z	STV-A				
100	138	92	76	74	97.5	9	24
125	164	111	98	98	122.5	9	33
150	202	135	120	112	147.5	10	32
160	211	149	128	127	157.5	10	38
200	248	195	156	156	197.5	12	46

#### Available sizes of mounting ring

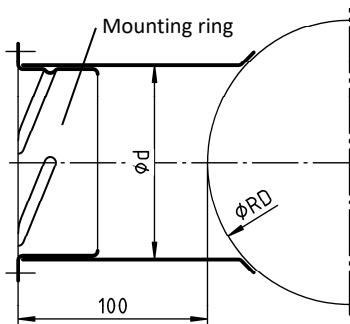
NW	Ø D1 external	Ø D2	Ø D3	Ø E	R	H2
100	98	125	117	105	13.5	43
125	123	150	142	130	13.5	46
150	148	187	179	155	19.5	46
160	158	187	176	165	14.5	44
200	198	225	217	205	13.5	45

### DIMENSIONS OF ACCESSORIES

#### Panelled cover plate (-PA)



#### Saddle bracket (-SA)



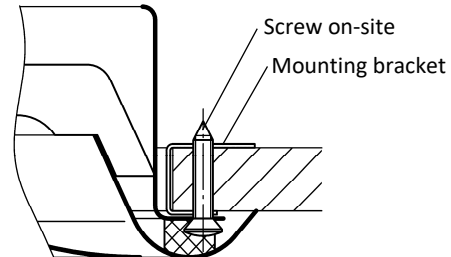
#### Available sizes of accessories (-PA / -SA)

NW	□ A	ø RD	ø d
100	185	150	100
125	210	200	125
150	285	200	150
160	285	200	160
200	285	250	200

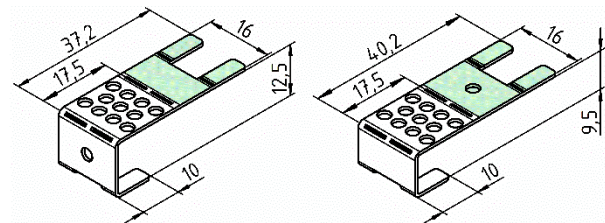
### ASSEMBLY DETAIL

#### With mounting bracket:

For fastening the mounting ring with screw mounting (-SM).



#### Mounting bracket:



For models with screw mounting, 4 mounting brackets (mounting aids) are supplied loose.

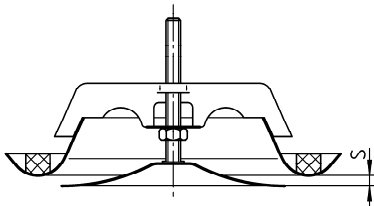
The mounting bracket is supplied loose and unbent. It will then be canted on site in order to fit the required ceiling depth. The single bore serves here as a marking for the ceiling depth  $T=12.5$ .

The mounting bracket can be shortened to 17.5 mm on site by removing the area marked in green.

### TECHNICAL DATA

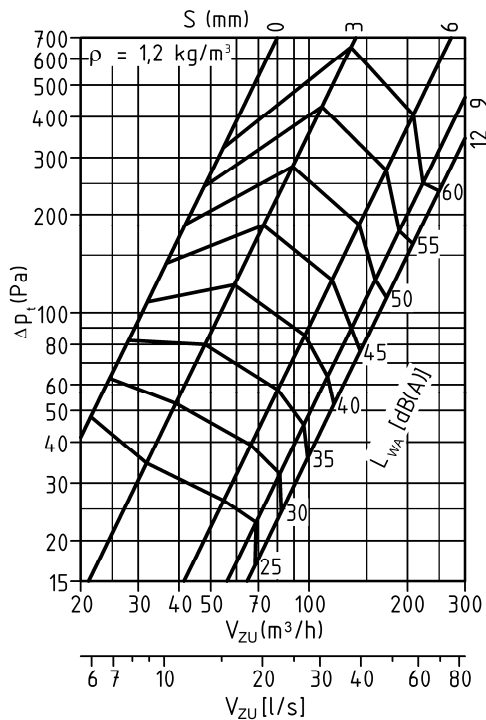
#### Gap distance

STV-Z (supply air)

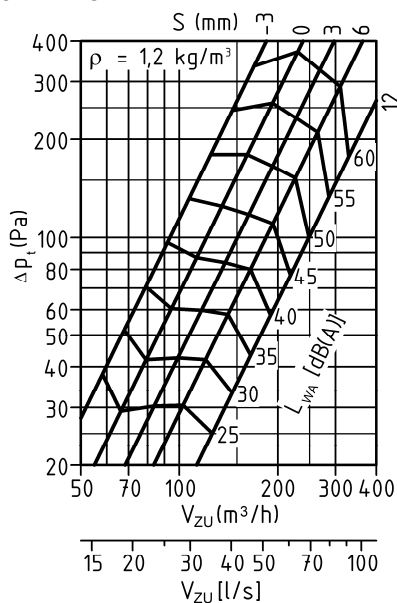


#### Pressure loss and noise level (supply air)

STV-Z-100-...

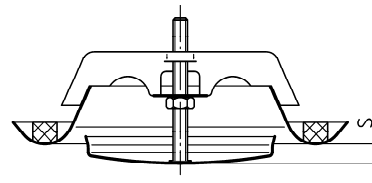


STV-Z-125-...



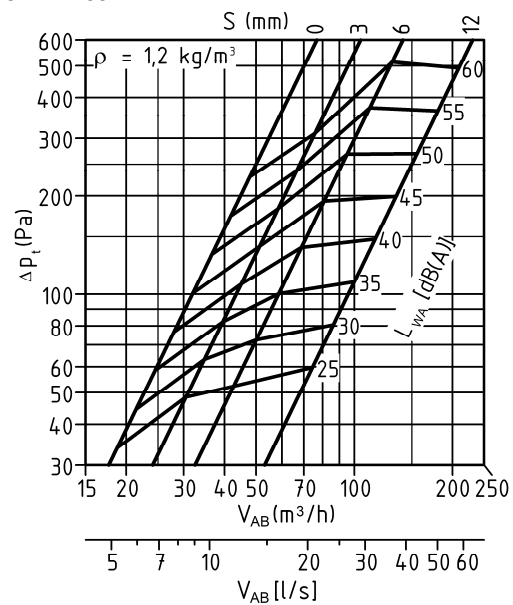
#### Gap distance

STV-A (return air)

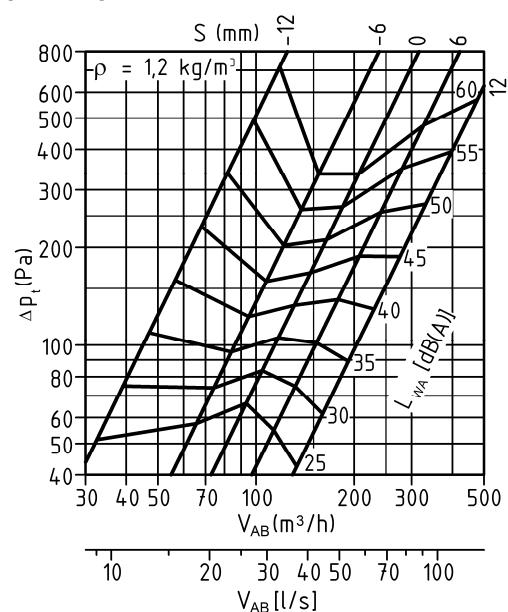


#### Pressure loss and noise level (return air)

STV-A-100-...

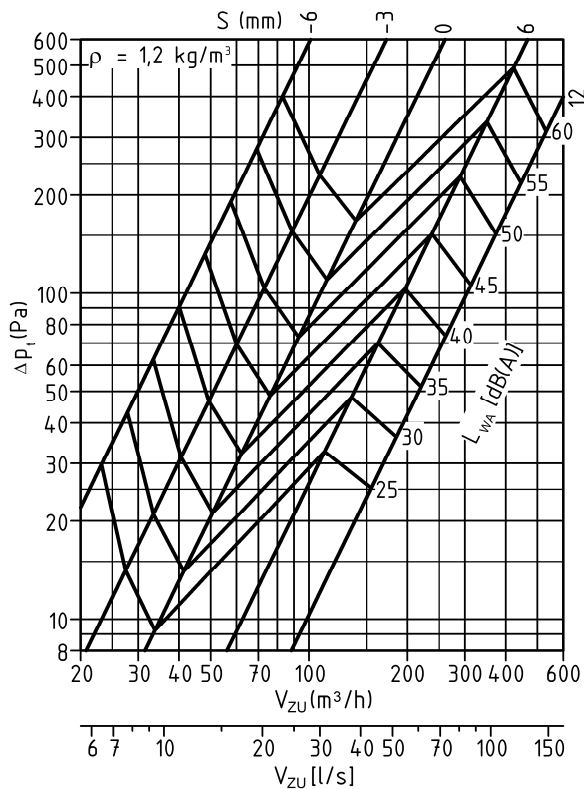


STV-A-125-...

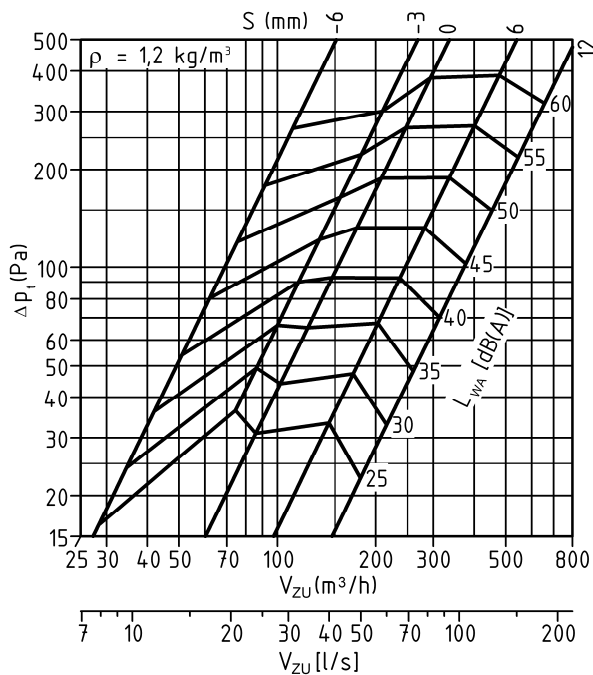


**Pressure loss and noise level (supply air)**

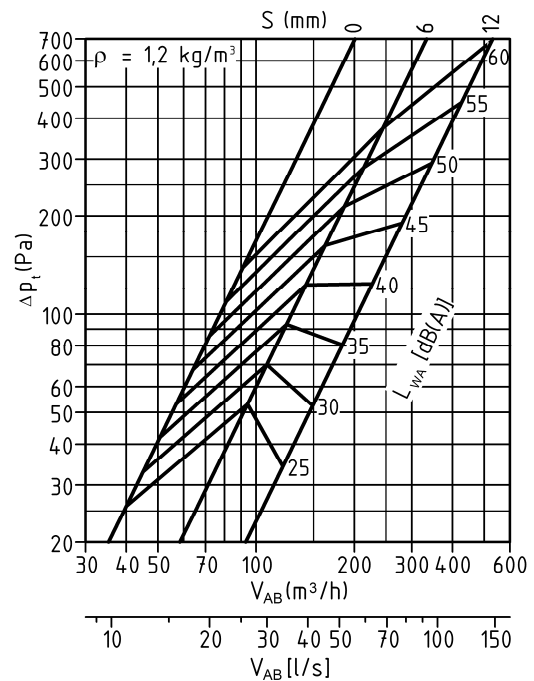
STV-Z-150-...



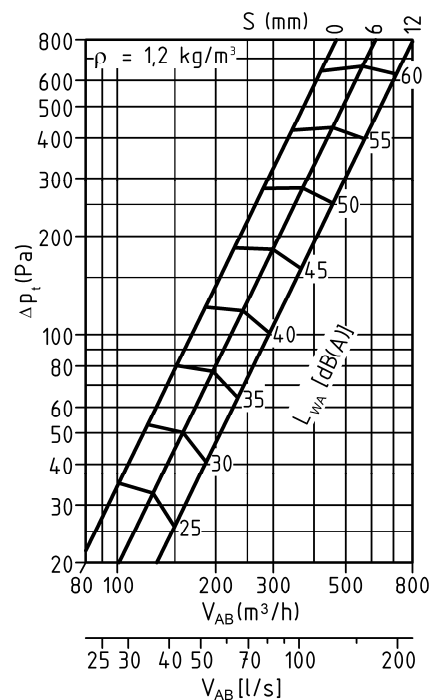
STV-Z-160-...


**Pressure loss and noise level (return air)**

STV-A-150-...

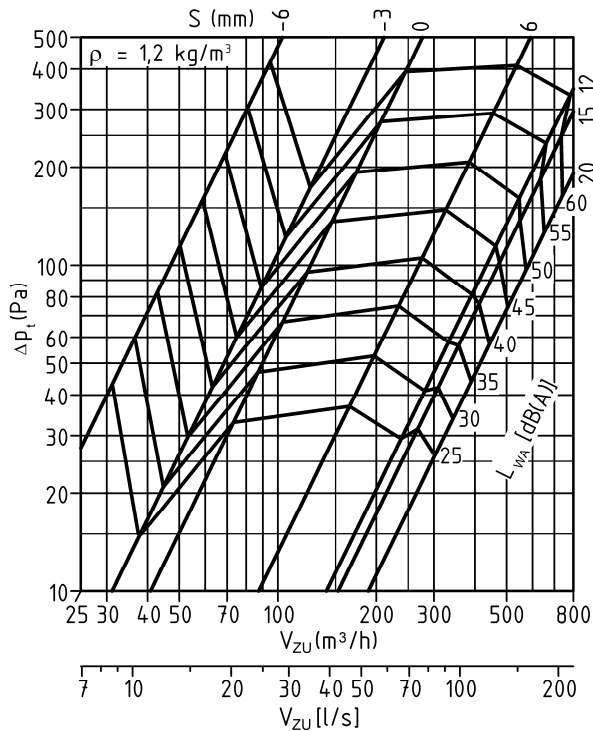


STV-A-160-...

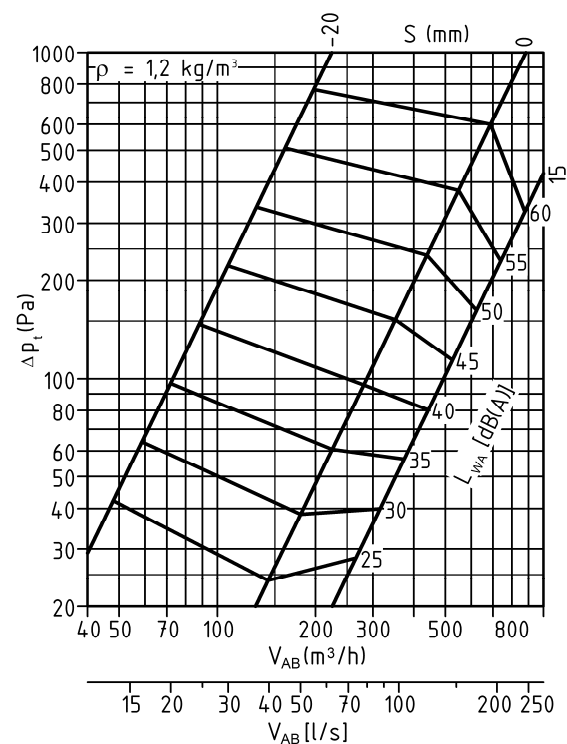


**Pressure loss and noise level (supply air)**

STV-Z-200-...


**Pressure loss and noise level (return air)**

STV-A-200-...


**WEIGHT**

STV poppet valve with mounting ring

NW	Weight (kg)	
	STV-Z	STV-A
100	0.25	0.25
125	0.32	0.32
150	0.45	0.45
160	0.45	0.45
200	0.65	0.65

**LEGEND**

$V_{ZU}$	(m³/h) [l/s]	=	supply air volumetric flow
$V_{AB}$	(m³/h) [l/s]	=	return air volumetric flow
$\Delta p_t$	(Pa)	=	Pressure loss
$L_{WA}$	[dB(A)]	=	A-weighted sound power level ( $L_{WA} = L_{WA1} + KF$ )
$L_{W1}$	[dB/Okt]	=	Sound power level / octave, relative to 1 m² of inflow area
KF	(-)	=	Correction factor
$\rho$	(kg/m³)	=	Density
NW	(mm)	=	Nominal width
S	(mm)	=	gap width

## STV ORDER CODE

01	02	03	04	05	06	07
Type	Type of air	Nominal width	Material	Paint	Mounting	Accessories
<b>Example</b>						
STV	-Z	-100	-SB	-9010	-SM	-00

All fields must be filled when ordering.

### Sample

**STV-Z-100-SB-9010-SM-00**

STV poppet valve with mounting ring | For supply air | NW 100 | Sheet steel | Painted to RAL colour 9010 (white) | With screw mounting | Without accessories

## ORDER DETAILS

### 01 - Type

STV = STV poppet valve with mounting ring

### 02 - Type of air

Z = supply air

A = Return air

### 03 - Nominal width

100 = NW 100

125 = NW 125

150 = NW 150

160 = NW 160

200 = NW 200

### 04 - Material

SB = sheet steel

### 05 - Paint

9010 = painted to RAL colour 9010 (white) (standard).

xxxx = RAL colour can be freely selected (always with 4 digits).

### 06 - Mounting

SM = screw mounting with mounting bracket (standard).

### 07 - Accessories

00 = without accessories

PA = panelled cover plate, made of sheet steel, painted to the colour of the poppet valve (mounting ring is firmly fitted to the panelled cover plate).

SA = saddle bracket, made of galvanised sheet steel (mounting ring is firmly fitted to the saddle bracket).

## SPECIFICATION TEXT

---

Poppet valve **for supply air**, consisting of a round sheet steel front frame (-SB) painted to RAL colour 9010 (white) (-9010, standard) or painted to a freely selectable RAL colour (-xxxx, always with 4 digits), with circumferential foam seal. With adjustable valve disc made of sheet steel (painted to the colour of the front frame), for air volume regulation. Counter nut for securing the air volume setting and threaded spindle made of galvanised steel.

With mounting ring made of galvanised sheet steel and bayonet catch (for mounting the poppet valve to the mounting ring). Mounting ring fastening to the ceiling by means of screw mounting (-SM), with mounting bracket.

Product: SCHAKO **type STV-Z-...**

-- Poppet valve **for return air**, with adjustable valve disc.

Product: SCHAKO **type STV-A-...**

### **Accessories** (at an extra charge):

--- Panelled cover plate (-PA), made of sheet steel, painted to the colour of the poppet valve (mounting ring is firmly fitted to the panelled cover plate).

--- Saddle bracket (-SA), made of galvanised sheet steel (mounting ring is firmly fitted to the saddle bracket).