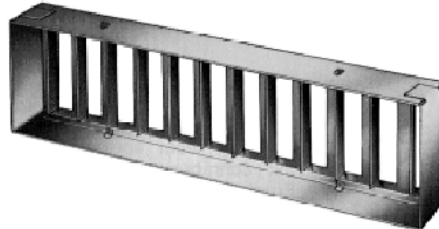
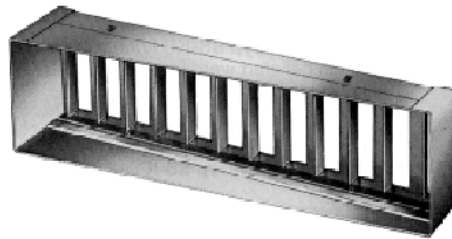
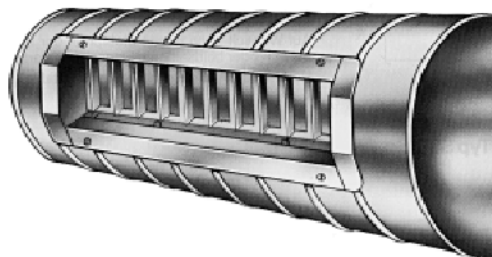




Hit-and-miss damper

SS-KN / SS-KS / SS-KR



SCHAKO KG
Steigstraße 25-27
D-78600 Kolbingen
Phone +49 (0) 7463-980-0
Fax +49 (0) 7463-980-200
info@schako.de
schako.com

Hit-and-miss damper SS-KN / SS-KS / SS-KR

Contents

Description	3
Construction	3
Model	3
Accessories	3
Models and dimensions	3
Dimensions	3
Installation	4
Order code	5
Specification text	6

Hit-and-miss damper SS-KN / SS-KS / SS-KR

Description

Hit-and-miss damper types SS-KN and SS-KS for volumetric flow control are suitable as single grille or add-on piece, consisting of box and damper, with the ends of the air flow straightener turned upward, in order to adjust the air volume.

On request, the hit-and-miss damper can be supplied with a one- or two-sided flange at an extra charge.

Hit-and-miss damper type SS-KR for volumetric flow control consisting of box and damper, with the ends of the air flow straightener turned upward, for installation in sheet metal / spiral ductwork.

Construction

Box

- Electrolytically galvanised sheet steel

Slider

- Electrolytically galvanised sheet steel

Model

- SS-KN - straight box shape, for duct installation.
- SS-KS - inclined box shape, for duct installation.
- SS-KR - straight box shape, for pipe installation (for installation in sheet metal / spiral ducts).

Accessories

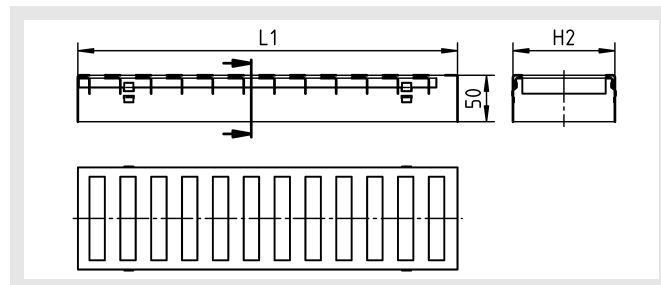
Flange (duct connection)

- without flange (-KA0) (standard for SS-KR)
- with flange on one side (-FL1) (not possible for SS-KR)
- with flange on both sides (FL2) (only possible for SS-KN)

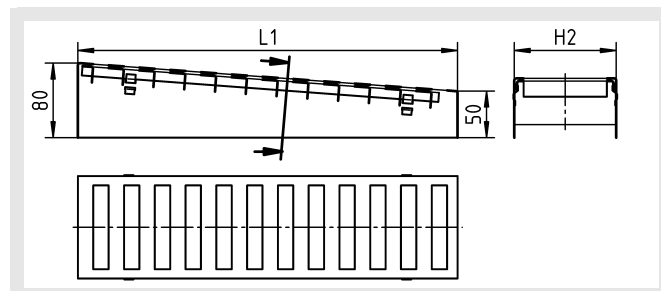
Models and dimensions

Dimensions

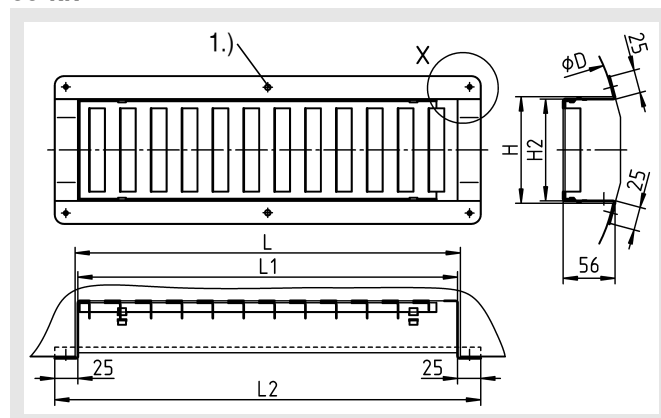
SS-KN



SS-KS



SS-KR



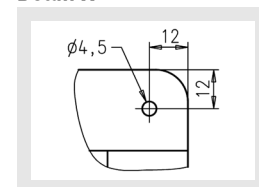
1.) Only for L = 615 to 1215

Available sizes

SS-KN / SS-KS / SS-KR

L	L1	L2	H	H2
315	310	358	65	60
415	410	458	115	110
515	510	558	215	210
615	610	658	315	310
815	810	858		
1015	1010	1058		
1215	1210	1258		

Screw mounting (-SM) Detail X



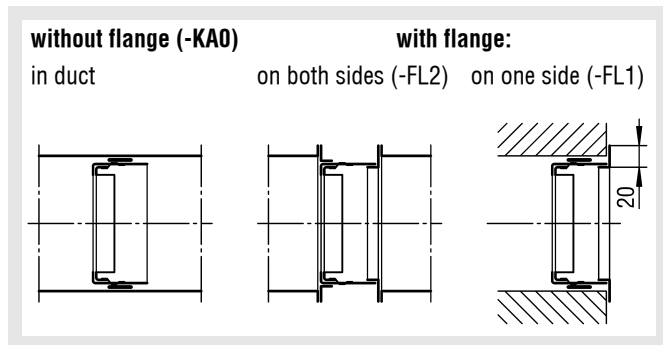
All combined lengths and heights available!
Special dimensions are not possible!

The L and H dimensions are the cut-out dimension in the duct or pipe.

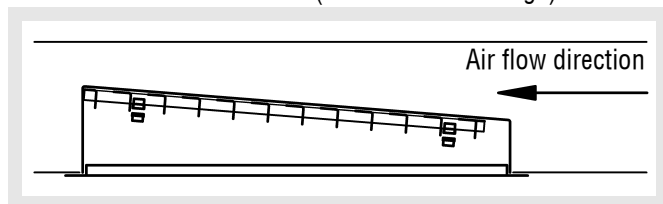
Hit-and-miss damper SS-KN / SS-KS / SS-KR

Installation

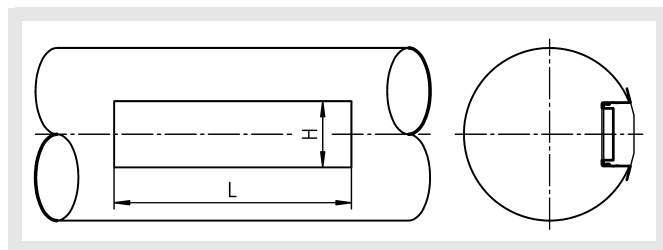
Installation situation SS-KN



Installation situation SS-KS (with one-sided flange)



Installation situation SS-KR



Duct diameter

SS-KR-...		øD		
		min.	ideal	max.
Height H	65	140	250	400
	115	300	500	800
	215	600	750	1250
	315	900	1000	1250

Duct diameter

The curved flange and the four height dimensions, apart from providing high stability and torsional rigidity, allow optimum adjustment of the hit-and-miss damper type SS-KR to sheet metal and spiral ductwork. The selection of the grille height depends on the duct measures shown in the table. The grille frames only make optimum contact when the ideal duct diameter is used.

The installation of the SS-KR-... in spiral ducts must take place free of stress. Avoid using unround or deformed spiral ducts, in order to protect the grilles from distortion.

Hit-and-miss damper SS-KN / SS-KS / SS-KR

Order code

01	02	03	04	05	06
Type	Model	Length	Height	Material	Duct connection
Example					
SS	-KN	-0315	-065	-SV	-KA0

All fields must be filled when ordering.

Sample

SS-KN-0315-065-SV-KA0

Hit-and-miss damper SS | straight box shape for duct installation | length 315 mm | height 65 mm | galvanised sheet steel | without flange

Order details

01 - Type

SS = Hit-and-miss damper SS

02 - Model

KN = straight box shape, for duct installation.

KS = inclined box shape, for duct installation.

KR = straight box shape, for pipe installation (for installation in sheet metal / spiral ducts).

03 - Length

0315 = Length 315 mm

0415 = Length 415 mm

0515 = Length 515 mm

0615 = Length 615 mm

0815 = Length 815 mm

1015 = Length 1015 mm

1215 = Length 1215 mm

04 - Height

065 = Height 65 mm

115 = Height 115 mm

215 = Height 215 mm

315 = Height 315 mm

05 - Material

SV = Galvanised sheet steel (standard)

06 - Duct connection

KA0 = without flange (standard for SS-KR)

FL1 = with flange on one side (not possible for SS-KR)

FL2 = with flange on both sides (only possible for SS-KN)

Hit-and-miss damper **SS-KN / SS-KS / SS-KR**

Specification text

Hit-and-miss damper type SS-KN, straight box shape, for duct installation. Box and damper made of electrolytically galvanised sheet steel, with the ends of the air flow straightener turned upward, for volumetric flow control.

Product: SCHAKO **type SS-KN-...**

- Type SS-KS, inclined box shape, for duct installation.
Product: SCHAKO **type SS-KS-...**
- Type SS-KR, straight box shape, for pipe installation (for installation in sheet metal / spiral ducts).
Product: SCHAKO **type SS-KR-...**

Accessories:

- Flange (duct connection)
 - without flange (-KA0) (standard for SS-KR)
 - with flange on one side (-FL1) (not possible for SS-KR)
 - with flange on both sides (FL2) (only possible for SS-KN)