

SLIDE FLAP

Space-saving sliding flap

Advantages

- Thanks to the low installation height of 40 mm, the frame can be mounted in case of limited space in the shaft top
- Surface mounting for tight shaft spaces
- Very good heat transition coefficient: closing mechanism with a U-value of 1.82 W/(m²K)
- Air-tight according to GEG requirements
- Low-noise DC motor
- Particularly suitable for elevator shafts and technical shafts

Performance profile

- Slide flap with motor for evacuation of heat, combustion gases and for natural ventilation of the shaft
- The free cross-section of the existing opening is not reduced
- Covers several ventilation openings
- Mounting hooks for easy and flexible installation

Technical information

- Pre-assembled and cabled chain drive to open the sliding panel
- Frame made of aluminium and panel made of galvanised sheet steel

Mounting

- Horizontal or vertical installation system with a Plug & Play connection for the electronic system
- Fastening on the shaft wall or ceiling with the help of the installation frame
- Corner mounting is possible thanks to the mounting hooks

Certification

- For wall mounting: 1368-CPR-C-7187
- For installation into a flat roof or slightly inclined roof: 1368-CPR-C-7186 EN 12101-2

Table of Contents

Description	3
Models and dimensions	4

DESCRIPTION

The sliding flap of the **SLIDE FLAP** type is designed for the horizontal or vertical surface mounting. It consists of a sturdy frame that contains a motor-driven sling panel. The motor drive is equipped with a plug-and-play connection for easy installation, enabling straightforward connection to the power supply.

The **SLIDE FLAP** is particularly suitable for use in existing buildings, as its low installation depth means that it protrudes only minimally into the shaft and does not further restrict the free cross-section of the existing opening.

Properties

- Installation: horizontal or vertical surface mounting
- Sliding panel: motor-driven, completely integrated in the frame
- Drive: plug-and-play connection for easy installation
- Patented system: minimum mounting depth due to innovative design, installation height only 40 mm
- Intended use: ideal for applications where space is limited

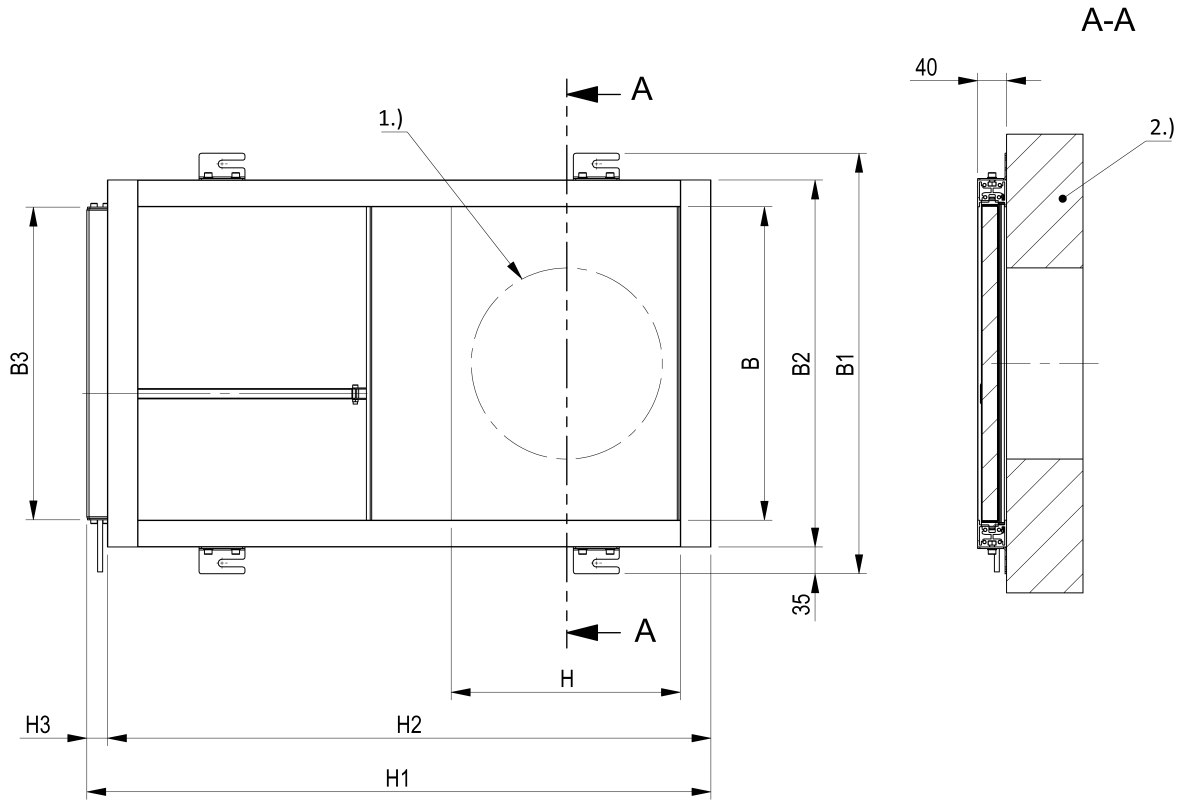
Function

- Reduction of energy losses by closing the ventilation opening, e.g., in the elevator shaft.
- For smoke evacuation if necessary.

Product details

- With or without weather protection grille/hood depending on the type of building
- For vertical or horizontal installation

MODELS AND DIMENSIONS



- 1.) Rough opening
- 2.) Concrete ceiling/wall

	B ¹	B1 ²	B2 ³	B3 ⁴	H ¹	H1 ²	H2 ³	H3 ⁴	Net ventilation surface area (m ²)	Number of mounting hooks	Weight (kg)	Actuator unit / supply
SLIDE FLAP 410	410	550	480	409	300	817,5	790	27,5	0,12	4	7,11	24 V DC / 0.6 A
SLIDE FLAP 760	760	900	830	409	350	1077,5	1050		0,26	6	13,90	24 V DC / 0.6 A
SLIDE FLAP 1160	1160	1300	1230	504	350	1458	1430		0,40	10	27,68	24 V DC / 1 A

¹Ventilation opening (mm)

²Recommended installation area incl. mounting hooks (mm)

³Frame dimensions (mm)

⁴Motor dimensions (mm)