

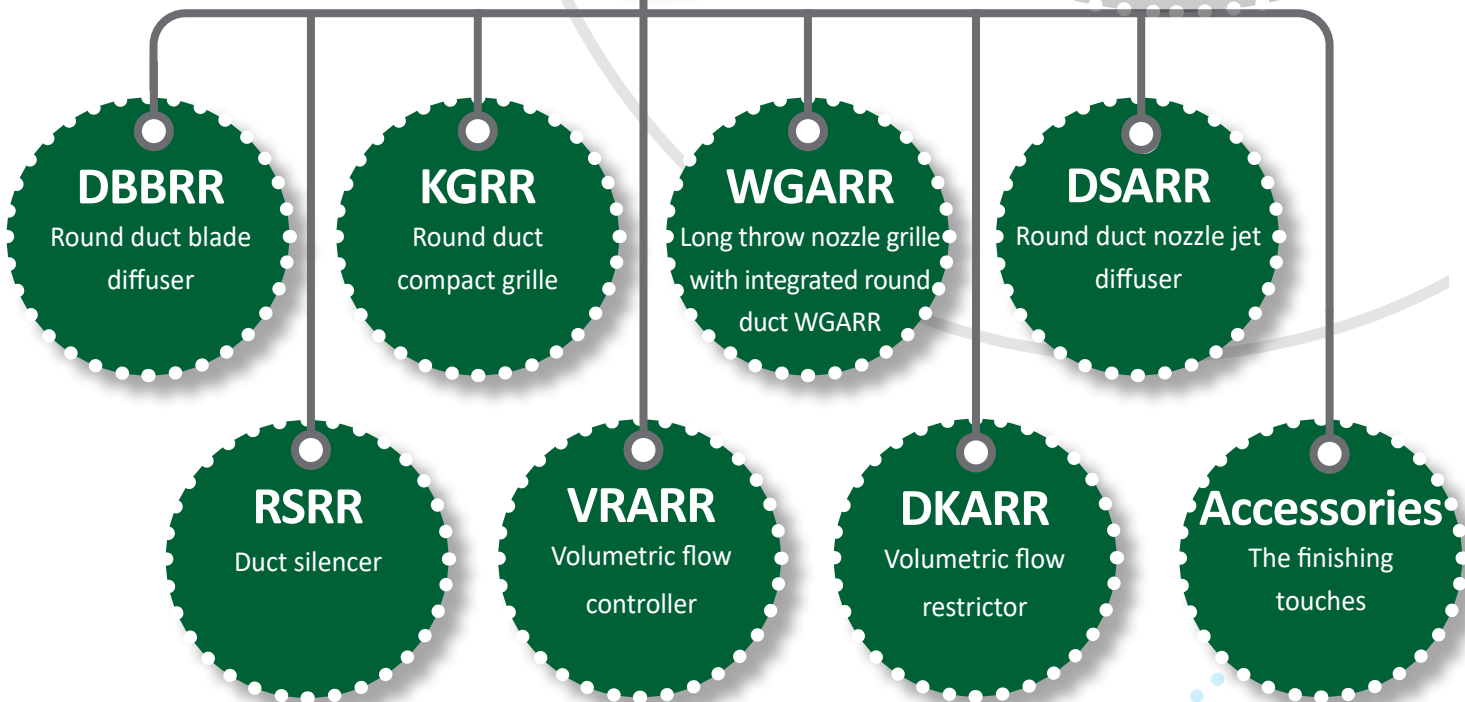


The SCHAKO round duct family

Freely visible ventilation systems made by SCHAKO on the highest aesthetic level



RR-COMPLETE



[RR-COMPLETE]

Common features of the SCHAKO round duct family.

- A complete family of round duct components to implement freely visible ventilation systems on the highest aesthetic level.
- The round duct system which can be designed in almost any way can be well integrated into modern architectural concepts.
- The versatile system can be used in laboratories, schools, kindergartens, offices, showrooms, seminar rooms, restaurants, gymnasiums, multi-purpose halls and even in residential buildings.
- Cooling and heating mode are possible.
- Guaranteed thermal cosiness and air flow adjustment in the entire system.
- The round duct system is already designed in the planning stage at SCHAKO and supplied to the customer as CAD drawing.
- The clearly defined air volumes flow out at the place where they are needed and as far as planned in the concept- CFD simulation can be realised if necessary.
- All components can be installed in the mounting positions 3 o'clock, 6 o'clock, 9 o'clock and 12 o'clock in diameters from 200 mm to 500 mm.

[The best for designers]

abc tower
cologne | germany



[RR-COMPLETE]

luxembourg airport
luxembourg



- Easy to mount: Pre-mounted suspension devices reduce the installation time.
- Flexible and accurate to the millimetre: Any geometry is possible thanks to the combination of dummy pipes, bends, and connecting pieces.
- Visible installation and integration of volumetric flow controllers, duct silencers and air diffusers into the ducts.
- Fast delivery anywhere within Europe.
- The rounded hit-and-miss damper on the air diffuser ensures that the supply air is discharged uniformly across the whole diffuser area and allows an installation at any point along the duct system.
- Optimized packaging for transport to the construction site.

[The best for system builders]

Common features of the SCHAKO round duct family.

- Aesthetic: All components can be manufactured to the same diameters and to a uniform duct design.
- Adaptable: All components are available in all RAL colours.
- Complete: Implementation of a complete and adjustable system: integrated supply air and return air diffusers, controllable volumes.
- Manual adjustment of the throw direction without changing the pressure loss or the sound power level.
- Ensures supply air introduction without draughts.
- Variable volume flow rates from 100 % to 40 % offer significant energy-saving potential while maintaining stable air jets.
- Quick and easy cleaning of the smooth and dimensionally stable ducts.
- Individual special solutions can be implemented.

[The best for operators]

[RR-COMPLETE]



What makes the SCHAKO round duct family so unique.

DBBRR

Round duct blade diffuser

- Number of slots: 2 - 14
- Length: 500 - 2,000 mm
- The centrally arranged blades in support profile sections ensure that the free cross-section at every blade is the same. As a result, the noise level and pressure loss are not affected when the blade position is changed
- Due to the horizontal air throw, the maximum end velocity of jet and temperature difference in cooling mode are reduced to such an extent that no draughts are produced in the residential area
- In heating mode, this allows a large penetration depth, thus providing an effective, cost-saving heating phase



KGRR

Round duct Compact grille

- With adjustable horizontal and vertical air deflection blades
- Length: 500 - 2,000 mm
- High flexibility due to different air jet directions: horizontal throw to one side, against each other, straight, 44° diverging, 84° diverging



WGARR

Round duct Long throw nozzle grilles

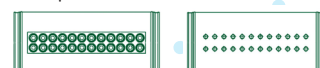
- 1- 2 nozzle rows
- Length: 500 - 2,000 mm
- The nozzles, which can also be adjusted individually at a later date, have a swivel range of 45°
- Large penetration depths which are able to supply the whole room with fresh air
- The large number of individual jets allow a high induction so that the temperatures and velocities are very quickly reduced
- In cooling mode, the air jet runs horizontally for a long time before it falls into the residential area and, in heating mode, a fast and effective heating phase is made possible



DSARR

Round duct Nozzle jet diffuser

- 2- 4 nozzle rows
- Length 500 - 2,000 mm
- With nozzles that can be adjusted individually by hand at a later date or fixed nozzles
- High penetration depths despite small air volumes
- Very good acoustic behaviour
- The large number of individual jets allow a high induction so that the temperatures and velocities are very quickly reduced

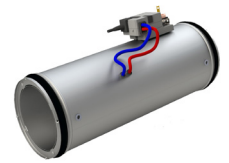


What makes the SCHAKO round duct family so unique.

VRARR

Volumetric flow controller

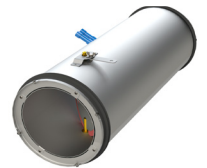
- For pressure-independent volumetric flow regulation
- For supply and return air systems
- For constant CAV or variable VAV systems
- For positive control ZU / V_{\min} / V_{mid} / V_{\max} / AUF
- For volumetric flow and linear pressure control
- In the differential pressure range 50- 1,000 Pa
- Can also be used with vertical axis



DKARR

Volumetric flow restrictor

- For quick, easy control of the supply air volume
- For supply and return air systems
- Easy regulation without tool
- Dimensionally stable due to standard double beads
- Mounting-friendly and position-independent mounting



RSRR

Duct silencer

- Optimum visual adaptation to the rest of the pipe system due to identical diameters
- Does not only minimise the flow-generated noise but also prevents the cross-talk sound transmission from room to room
- With sound absorption according to the absorption principle, by means of an annular chamber filled with mineral wool according to DIN 1402 A2 non-flammable



[RR-COMPLETE]

“Thanks to its perfect adaptability, the RR-COMPLETE round tube family can be used in almost any application and looks always good. The planning support and the CAD plan created by SCHAKO provides the customer a certain degree of security. Pure competence in air!”

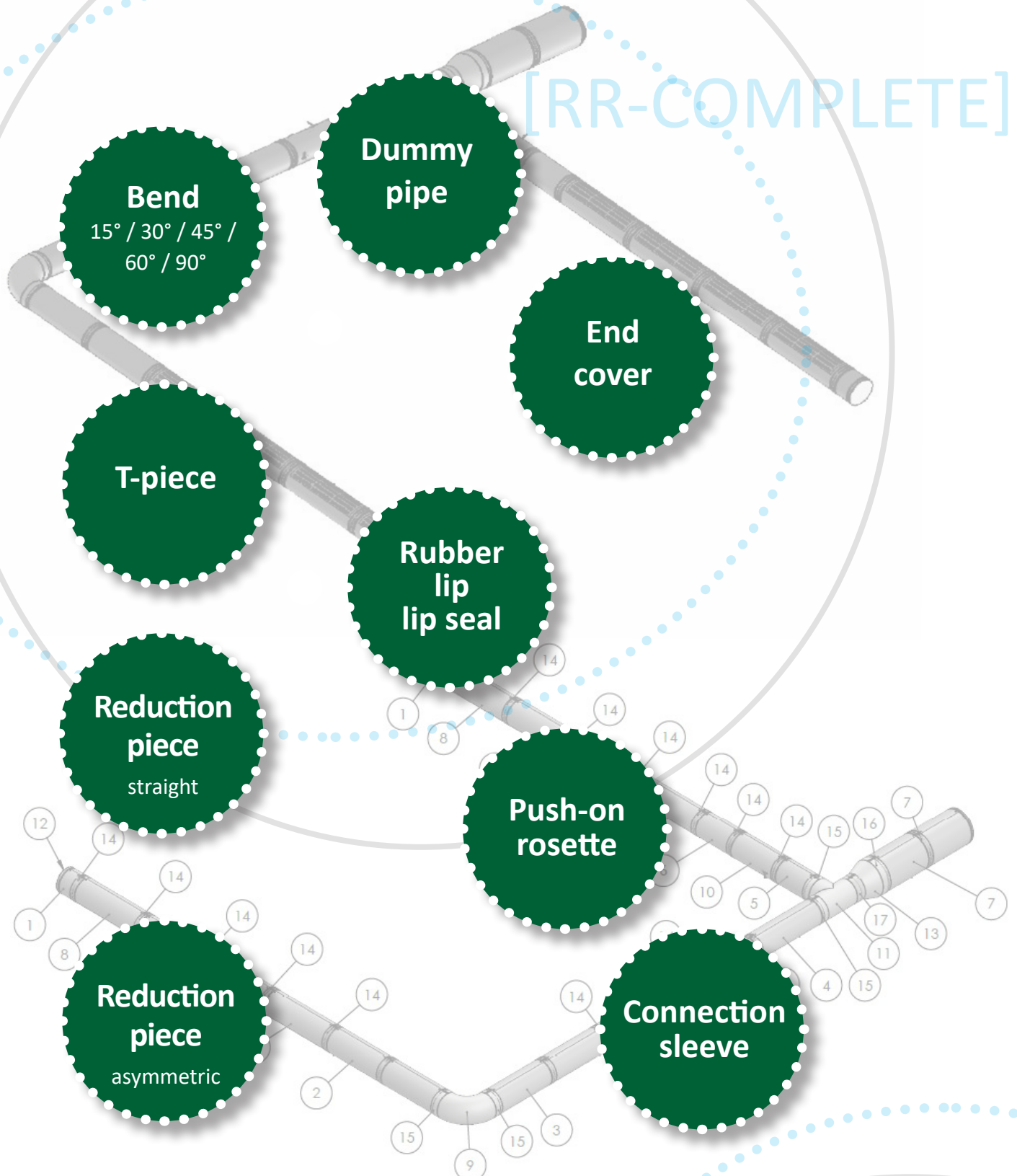
Stephan Schlewing

SCHAKO field service – Lower Saxony, Northern and Eastern NRW



To complete the SCHAKO round duct family.

[RR-COMPLETE]



[flexible - aesthetic - complete]

Successful installation: references for the SCHAKO round duct family.

[RR-COMPLETE]

DBRR



e-mail fabrik
amberg | germany

KGRR



häring akademie
bubsheim | germany

WGARR



rädlinger headquarters
windischbergerdorf |
germany

DSARR



sparkasse bad
aibling | germany

Pure competence in air.



[RR-COMPLETE]

