

Technical features

Frame profiles are fitted with bores to allow them to be connected to the plasterboard ceiling using screws. The air deflection blades adjustable from below allow for various throw adjustment options.

Thus, the air throw pattern in cooling mode and heating mode can be adjusted. Very good induction is achieved while the velocity and temperature difference of the supply air jet are effectively reduced.

Available sizes

A single-slot version with and without plenum box is possible; lengths of up to 1500 mm are possible.

Accessories

- plenum box
- Damper
- Rubber lip seal
- Insulation

SCHAKO stands for competence in the ventilation and air conditioning technology. The quality standard and the reliability of our products are well-known throughout Europe. In our own test laboratories we develop solutions which sustainably optimise the indoor climate in work environments and public spaces. With sites in Germany, Spain, Hungary and Turkey we deliver quickly and flexibly in all of Europe.

We carry a broad standard range and are optimally geared to meet special air demands with individual and intelligent solutions.

Pure competence in air

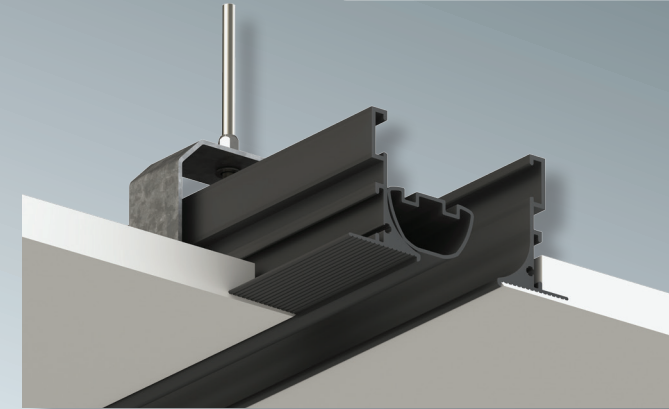
As air specialists, the companies of **SCHAKO Group - NOVENCO Building&Industry, REVEN, SCHAKO, SCHNEIDER Elektronik and SIROCCO** - provide a unique portfolio of ventilation, air conditioning, smoke extraction and fire protection products and system solutions for the commercial construction, public buildings, canteen kitchens, laboratories, the process industry, stairwells, underground car parks and tunnel systems.

SCHAKO Ferdinand Schad KG

Steigstraße 25 - 27
D-78600 Kolbingen
Germany
www.schako.com
Version: 2019-02-26



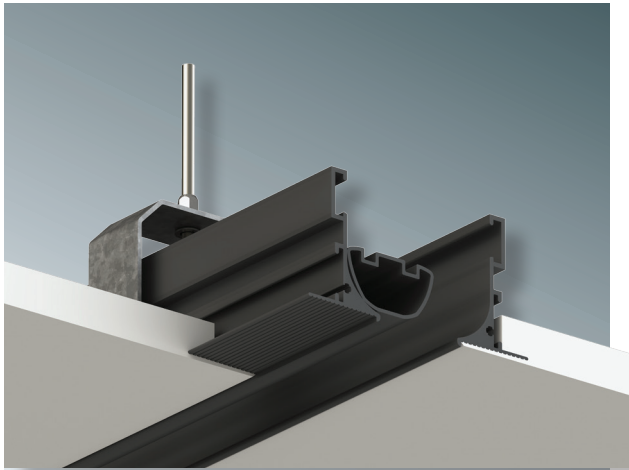
Pure competence in air.



DSCXL

Slot ceiling diffuser for large air volumes to be integrated in plasterboard ceilings

The PLASTER ceiling slot diffuser type DSCXL is suitable for use in rooms from 2.6 m to 4 m high for direct installation in plasterboard ceilings or ceiling cavities (pressure ceilings). The special shape of the frame profile allows good installation in the plasterboard ceiling.



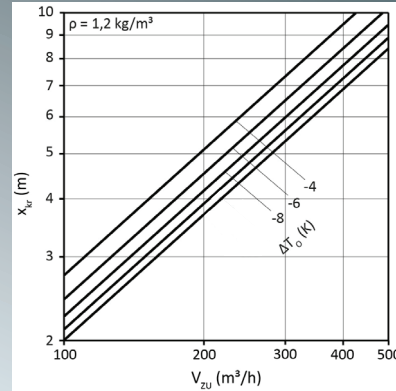
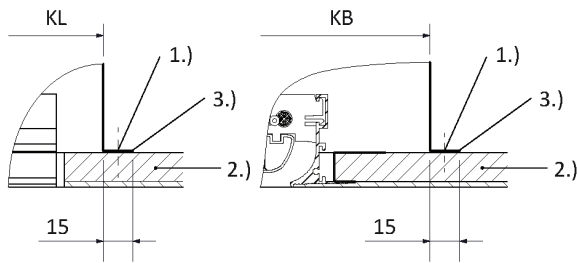
Areas of application

For plasterboard ceilings and pressure ceilings

The special shape of the frame profile allows for a very good integration in a plasterboard ceiling.

Frame profiles are fitted with bores in order to connect them to the plasterboard ceiling using screws prior to filling.

The new single-slot SCHAKO DSCXL slot diffuser can be used as a single piece or in band design.



Function

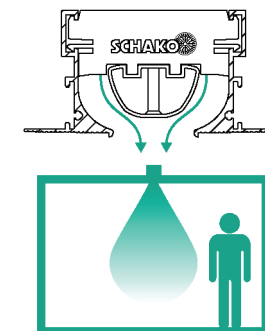
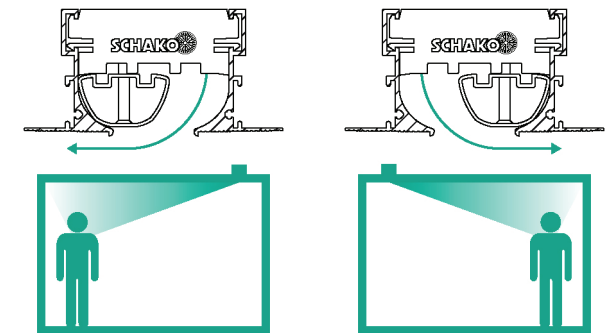
Invisible perfection

- The DSCXL is a slot diffuser with an air deflection blade adjustable from below providing the possibility to realise a variety of throw direction options.
- A good Coanda effect and very good induction allow for the use of the DSCXL in cooling mode up to $\Delta T_0 \leq -8$ K.
- The air velocity and temperature difference of the air stream supplied are effectively reduced. The resistance created by the blades ensures that the supply air is distributed equally across the whole length of the slot diffuser.
- Manual adjustment from cooling to heating mode is possible. In heating mode, the blade should be adjusted in such a way that a vertical air stream with high penetration depth is created.
- In cooling mode, a single-sided right or single-sided left air stream direction with horizontal throw pattern can equally be set.

Benefits

- The integration in a plasterboard ceiling can be performed very quickly, easily and inconspicuously.
- An architect-friendly installation is possible.
- Very high flow rates on a very small slot surface can be realised.

Settings



Very flexible

The redesigned air deflection blade with stable rail mechanics allows for a variable air throw pattern both in cooling mode and in heating mode.