

## Technical features

Frame profiles are fitted with bores to allow them to be connected to the plasterboard ceiling using screws. The air deflection blades adjustable from below allow a variety of throw adjustment options. In cooling mode, a one- or two-way air throw pattern can be set - for maximum induction so that velocity and temperature difference are effectively reduced.

## Available sizes

- 1- or 2-slot model
- Curved length up to 1500 mm maximum
- Minimum radius = 2000 mm

## Accessories

- Plenum box
- Damper
- Rubber lip seal
- Insulation

SCHAKO stands for competence in the ventilation and air conditioning technology. The quality standard and the reliability of our products are well-known throughout Europe. In our own test laboratories we develop solutions which sustainably optimise the indoor climate in work environments and public spaces. With sites in Germany, Spain, Hungary and Turkey we deliver quickly and flexibly in all of Europe.

We carry a broad standard range and are optimally geared to meet special air demands with individual and intelligent solutions.

### Pure competence in air

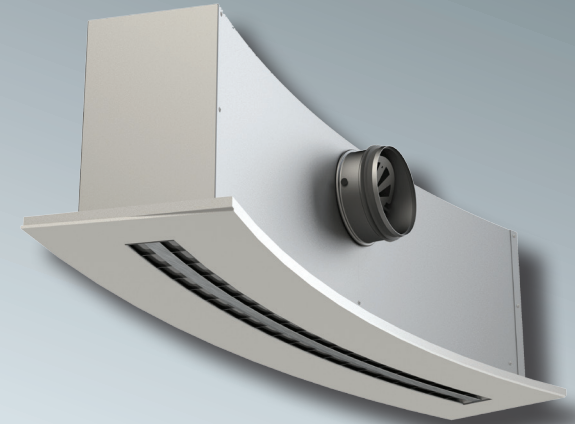
As air specialists, the companies of **SCHAKO Group - NOVENCO Building&Industry, REVEN, SCHAKO, SCHNEIDER Elektronik and SIROCCO** - provide a unique portfolio of ventilation, air conditioning, smoke extraction and fire protection products and system solutions for the commercial construction, public buildings, canteen kitchens, laboratories, the process industry, stairwells, underground car parks and tunnel systems.

### SCHAKO Ferdinand Schad KG

Steigstraße 25 - 27  
D-78600 Kolbingen  
Germany  
[www.schako.com](http://www.schako.com)  
Version: 2019-02-26



Pure competence in air.



## DSCP

### ceiling slot diffuser for the integration in plasterboard ceilings

The new SCHAKO DSCP has the potential to become the favourite of architects and planners.

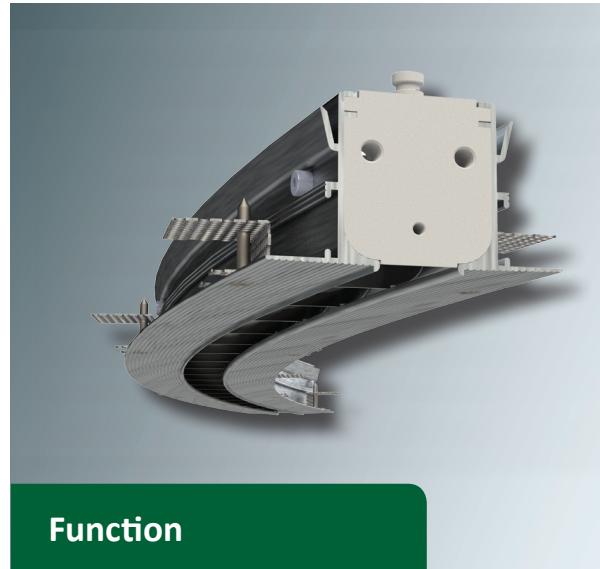
For it is markedly inconspicuous in terms of design and at the same time a real allrounder in terms of function. And also during installation it shows its strengths.



## Areas of application

### Inconspicuous in terms of design

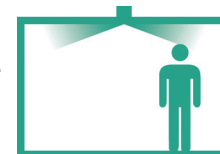
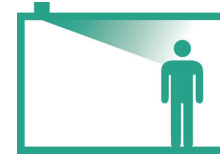
- The curved ceiling slot diffuser type DSCP (CURV-PLASTER) is suitable for use in rooms from 2.6 m to 4 m high for direct installation in plasterboard ceilings or ceiling cavities (pressure ceilings).
- The special shape of the frame profile allows good installation in the plasterboard ceiling.
- The special shape of the frame profile allows for a very good integration in a plasterboard ceiling.
- Frame profiles are fitted with bores in order to connect them to the plasterboard ceiling using screws prior to filling.
- The curved slot diffuser can be used as a 1- or 2-slot model either as a single piece or in band design.



## Function

### Inconspicuous in terms of function

The DSCP is a slot diffuser with adjustable air deflection blades providing the possibility to realise a variety of throw adjustment options. Manual adjustment from cooling to heating mode is possible. In heating mode, the blades should be adjusted in such a way that a vertical air stream with high penetration depth is created. In cooling mode, a one- or two-way air throw pattern with horizontal throw pattern can equally be set. A good Coanda effect and very good induction allow for the use of the DSCP in cooling mode up to  $\Delta T \leq -8$  K. The air velocity and temperature difference of the air stream supplied are effectively reduced.



## Benefits

The integration in a plasterboard ceiling can be performed very quickly, easily and inconspicuously.

The air supply is markedly inconspicuous in terms of interior design and flow. The resistance created by the blades ensures that the supply air is distributed equally across the whole length of the slot diffuser.

## Performance values

Without plenum box.

Values for curved length BoL = 1000 mm

DSCP-1 - 1-slot		
$V_{zu}$ (m <sup>3</sup> /h)	$L_{WA}$ [dB(A)]	$\Delta Pt$ (Pa)
60	<20	5
80	21	8
100	28	13
120	33	17

DSCP-2 - 2-slot		
$V_{zu}$ (m <sup>3</sup> /h)	$L_{WA}$ [dB(A)]	$\Delta Pt$ (Pa)
100	<20	5
130	22	8
160	28	13
200	35	17