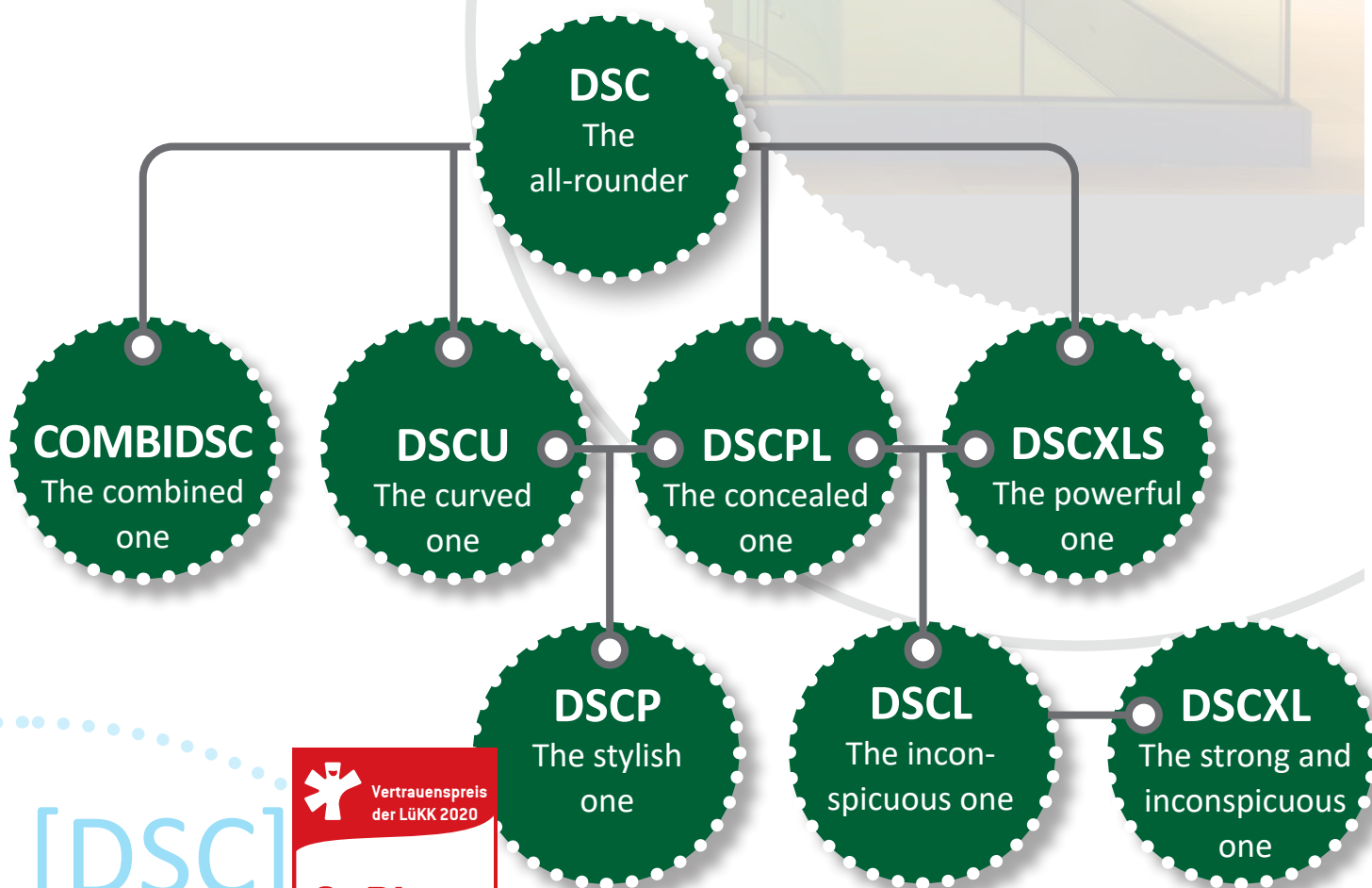


# The SCHAKO DSC family

Perfect air conditioning with  
slot diffusers from SCHAKO



[DSC]



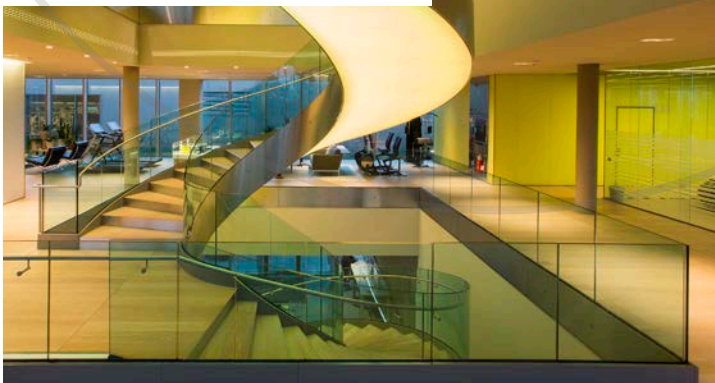
## Common features of the SCHAKO DSC family.

- A complete family of slot diffusers in straight and curved design for all requirements and various ceiling types.
- High induction for rapid reduction of temperature differences and air velocity.
- Supply air intake for maximum comfort and cosiness.
- Independent of the installation location in ceilings and walls thanks to the flexibility in adjusting the air jet direction.
- BIM data and design program for fast designing and dimensioning.
- Wide range of applications – variably adjustable air patterns from horizontal to vertical discharge make the diffusers suitable even for curtaining off room sections.
- Millimetre-precise laying of diffuser bands with active and inactive areas and corner angles between 90° and 170° for a uniform and aesthetic overall appearance.

### [The best for designers]

[DSC]

technogym village  
cesena | italy



equilibre  
fribourg | switzerland

- Up to 7 mounting options for easy installation: fixed, riveted, clamped, plastered, concealed, screwed, etc.
- A new band connector enables absolutely straight slot diffuser bands, even over several meters.
- Plenum box individually configurable in terms of height, spigot position, spigot diameter and box neck extension.
- The slot diffusers may vary in length independently of the plenum box.
- Wide range of applications with a large variety of frame profiles and additional profiles.
- Fast delivery anywhere within Europe.
- Optimized packaging for transport to the construction site incl. foils for component protection until commissioning.

### [The best for system builders]



Pure competence in air.



## Common features of the SCHAKO DSC family.

- Unobtrusive appearance combined with maximum efficiency.
- Optimal integration into various ceiling systems.
- Numerous design options for a harmonious look.
- Ensures supply air introduction without draughts.
- Individual adjustment of each blade, even subsequently, without pressure loss or impact on acoustics.
- Variable volume flow rates from 100 % to 40 % offer significant energy-saving potential while maintaining stable air jets.

[The best for operators]

[DSC]

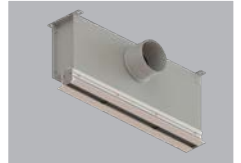


## What makes the SCHAKO DSC family so unique.

### DSC

The all-rounder

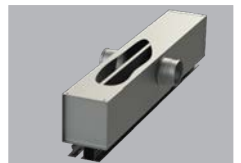
- An all-rounder for maximum versatility
- 1- to 4-slot model possible
- $\Delta T_{zu}$  in cooling mode up to -12 K
- Volumetric flow at 35 dB(A) up to 250 m³/h/m
- Available with hit-and-miss damper for direct installation in ducts



### COMBIDSC

The combined one

- The combined one: one diffuser and plenum box for air supply and air extraction, thus providing more freedom in the design of ceiling installations, without short-circuiting
- 2- or 4-slot model possible
- $\Delta T_{zu}$  in cooling mode up to -10 K
- Volumetric flow at 35 dB(A) up to 230 m³/h/m



### DSCU

The curved one

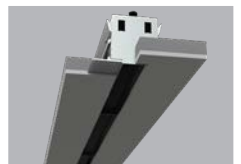
- The curved one for optimal adaptation to the architectural design and harmonious integration into the ceiling,  $R_{min} = 2000$  mm
- 1- to 3-slot model possible
- $\Delta T_{zu}$  in cooling mode up to -12 K
- Volumetric flow at 35 dB(A) up to 250 m³/h/m



### DSCPL

The concealed one

- The concealed one for installation in plasterboard ceilings
- 1- or 2-slot model possible
- $\Delta T_{zu}$  in cooling mode up to -12 K
- Volumetric flow at 35 dB(A) up to 200 m³/h/m



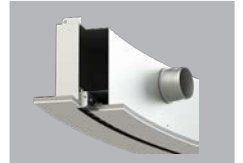
# [DSC]

## What makes the SCHAKO DSC family so unique.

### DSCP

The stylish one

- The stylish one: a curved slot diffuser for direct installation in plasterboard ceilings or boxes,  $R_{min} = 2000$  mm
- 1- or 2-slot model possible
- $\Delta T_{zu}$  in cooling mode up to  $-12$  K
- Volumetric flow at 35 dB(A) up to  $200 \text{ m}^3/\text{h}/\text{m}$
- With ceiling cutout template for easy installation



### DSCL/DSCXL

The strong and inconspicuous one

- The inconspicuous one for installation in plasterboard ceilings
- 1-slot model with slot widths of 20 mm and 30 mm (..XL)
- $\Delta T_{zu}$  in cooling mode up to  $-12$  K
- Volumetric flow at 35 dB(A) up to respectively 230 and  $300 \text{ m}^3/\text{h}/\text{m}$  (..XL)



### DSCXLS

The powerful one

- The powerful one for visible mounting in the ceiling profile
- 1-slot model with a slot width of 30 mm
- $\Delta T_{zu}$  in cooling mode up to  $-12$  K
- Volumetric flow at 35 dB(A) up to  $300 \text{ m}^3/\text{h}/\text{m}$



[DSC]

## Performance values of the DSC models (comparing 1-slot diffusers)

• DSC:	Volumetric flow at 35 dB(A) up to $130 \text{ m}^3/\text{h}/\text{m}$
• COMBIDSC:	Volumetric flow at 35 dB(A) up to $115 \text{ m}^3/\text{h}/\text{m}$
• DSCU:	Volumetric flow at 35 dB(A) up to $130 \text{ m}^3/\text{h}/\text{m}$
• DSCPL:	Volumetric flow at 35 dB(A) up to $130 \text{ m}^3/\text{h}/\text{m}$
• DSCP:	Volumetric flow at 35 dB(A) up to $130 \text{ m}^3/\text{h}/\text{m}$
• DSCL:	Volumetric flow at 35 dB(A) up to $230 \text{ m}^3/\text{h}/\text{m}$
• DSCXL:	Volumetric flow at 35 dB(A) up to $300 \text{ m}^3/\text{h}/\text{m}$
• DSCXLS:	Volumetric flow at 35 dB(A) up to $300 \text{ m}^3/\text{h}/\text{m}$

*Thanks to the combination of know-how, reliability, sense for aesthetic details and, last but not least, our after-sales service, designers, architects and end users are happy to use our slot diffusers in their projects.*

*All these features make SCHAKO's range ideal for creating tailor-made solutions, always perfectly adapted to the environment in order to improve the quality of the air you breathe.*

Massimo Meropiali  
Managing Director SCHAKO Italia S.r.l.

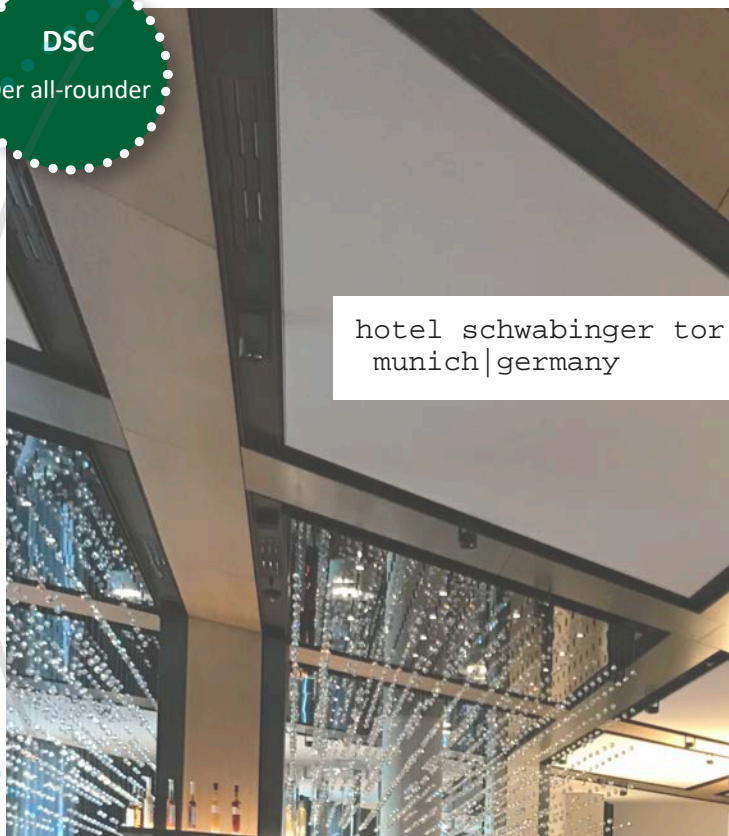




Successful installation: references for the SCHAKO DSC family.

**DSC**

Der all-rounder



hotel schwabinger tor  
munich | germany

**COMBIDSC**

The combined  
one



private luxury flat  
milan | italy

**DSCU**

The curved one



forum  
liberec | czech republic

**DSCPL**

The concealed  
one

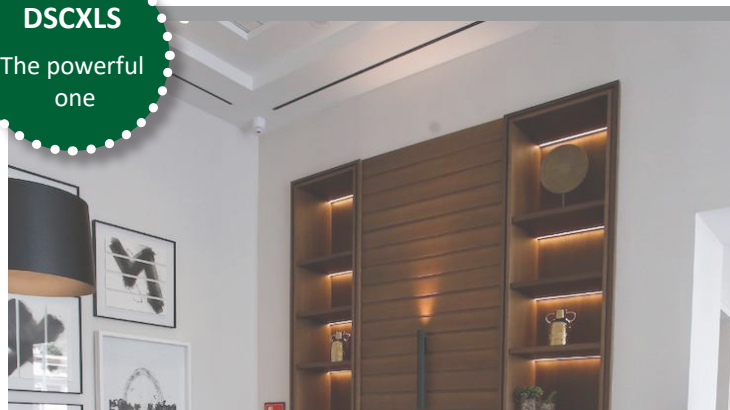


vivienda la zubia  
granada | spain

Successful installation: references for the SCHAKO DSC family.

**DSCXLS**

The powerful  
one



torre equitativa  
málaga | spain

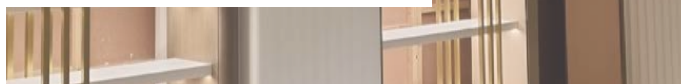


**DSCP**

The stylish  
one



harrods hair and beauty  
london | england

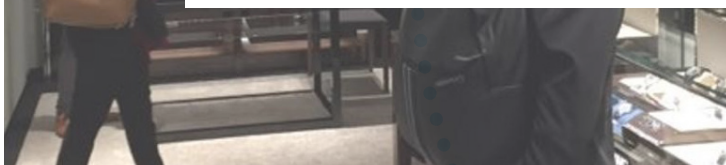


**DSCXL**

The strong and  
inconspicuous  
one



harrods watches of switzerland  
london | england



[DSC]

[DSC]



© SCHAKO KG  
Steigstraße 25-27  
D-78600 Kolbingen

2022-05-13