

Technical features

The design ceiling air diffuser is an air diffuser for installation flush with the ceiling in rooms with heights of 2.6-4.0 m.

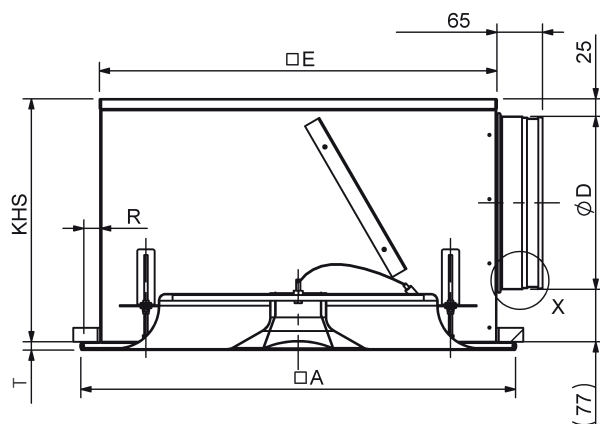
The fastening with the plenum box is effected via magnetic fastening as standard. There is also the option of concealed mounting (not possible for drill pattern E and K).

Available sizes

NW	□A	□E	R	T		SK-Q-56-Z...		SK-Q-56-A...	
				CDD ...-Q	CDD ...-S	KHS	∅D	KHS	∅D
600	598	570	12	12	3	350	248	415	313
625	623	570	24	12	3	350	248	415	313

KHS= standard height of plenum box

Special height of plenum box = $\varnothing D + 102$, but at least 200 mm.



SCHAKO stands for competence in the ventilation and air conditioning technology. The quality standard and the reliability of our products are well-known throughout Europe. In our own test laboratories we develop solutions which sustainably optimise the indoor climate in work environments and public spaces. With sites in Germany, Spain, Hungary and Turkey we deliver quickly and flexibly in all of Europe.

We carry a broad standard range and are optimally geared to meet special air demands with individual and intelligent solutions.

Pure competence in air

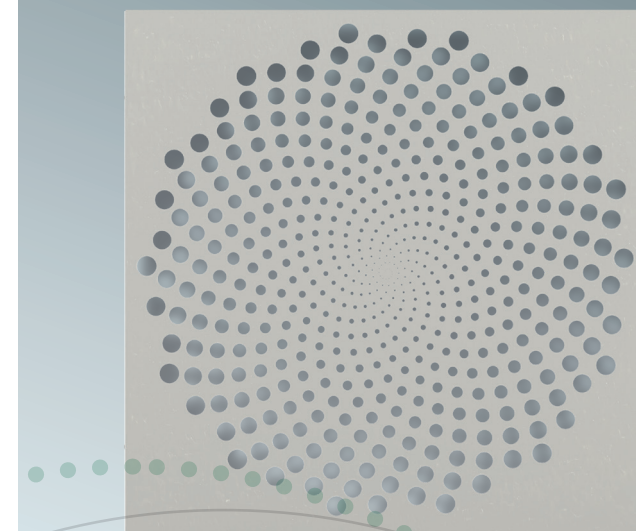
As specialists, the companies of **SCHAKO Group - ADMECO, NOVENCO Building & Industry, REVEN, SCHAKO, SCHNEIDER Elektronik and SIROCCO** - provide a unique portfolio of ventilation, air conditioning, smoke extraction and fire protection products and system solutions for the operating theatres, commercial construction, public buildings, canteen kitchens, laboratories, the process industry, stairwells, underground car parks and tunnel systems.

SCHAKO Ferdinand Schad KG

Steigstraße 25- 27
D-78600 Kolbingen
Germany
schako.com
Version: 2021-04-09



Pure competence in air.



CDD

Design ceiling diffuser in four versions for use in supply and return air installations

The round (-R) or square design ceiling air diffuser with surrounding edge (-Q) or square with double folded edge (-S) consists of various perforated faceplates with plenum box for introducing supply air into the room or extracting return air from the room.



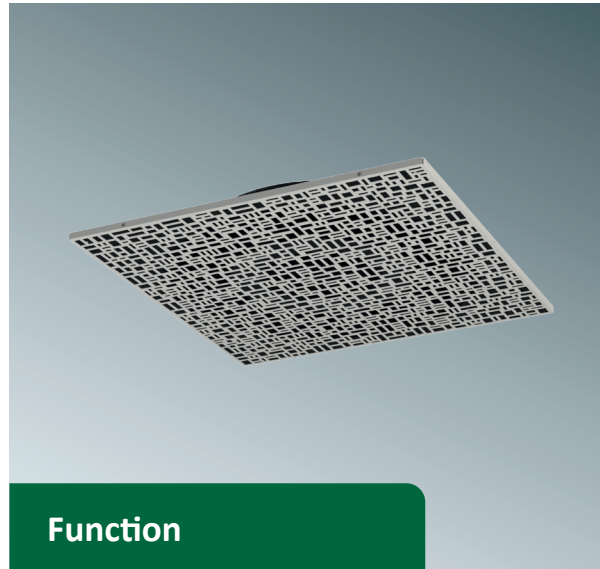
Areas of application

Air diffuser with extraordinary design

The design ceiling air diffuser is mainly used in comfort areas with high aesthetic demands. In addition to an extraordinary appearance, it also fulfils the highest demands in terms of comfort. It is suitable for VVS systems with variable volumetric flows of 40-100%.

Accessories

- plenum box
- Damper
- Rubber lip seal
- Plenum box insulation
- Volumetric flow measurement in the spigot of the plenum box
- Concealed mounting



Function

Design air diffuser for the highest ventilation requirements

The stable air jet and high induction allow the CDD design ceiling air diffuser to be used in cooling mode up to $\Delta t \leq -10$ K. The resistance created by the perforated faceplate ensures that the supply air is distributed equally across the whole surface of the ceiling air diffuser. The supply and return air diffusers are supplied with air or connected to the duct system via a plenum box.



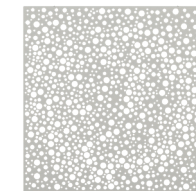
Benefits

Using the CDD design ceiling air diffuser allows for a visually appealing integration of supply air and return air diffusers into a ceiling system.

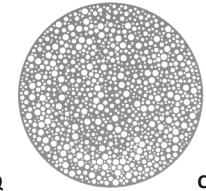
Performance values

Volumetric flows of up to 440 m³/h in supply air and up to 1200 m³/h in return air at a sound power level of 35 dB(A), depending on the design used.

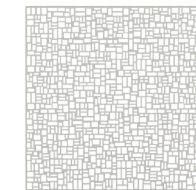
Various covers



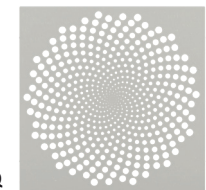
CDD-A-Q



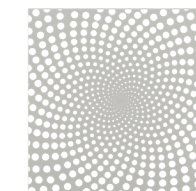
CDD-A-R



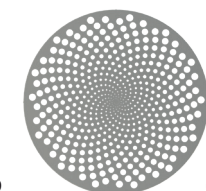
CDD-B-Q



CDD-K-Q



CDD-E-Q



CDD-K-R