

Technical features

The plenum box with the structure-borne sound insulation and integrated telephony silencer is made of galvanised sheet steel and the inner lining of special soundproof plates which are laid out in a reverse labyrinth. The building sound absorption coefficient of the partition wall is not reduced by fitting the plenum box, compared with conventional solutions.

In standard heights: 250 mm / 300 mm.

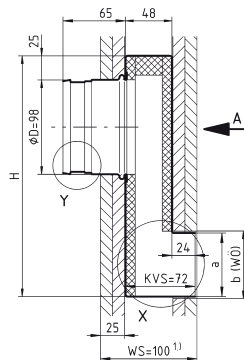
Available sizes

	Diffuser	a inside	b (wö)
AUDIX...55	ADSA-D0-...1 (1-row)	66	70
AUDIX...61	ADSA-VD-...1 (1-row)	52	56
AUDIX...62	ADSC-1 (1-slot)	54	58
AUDIX...63	ADSC-2 (2-slot)	94	98
AUDIX...64	ADSX-1 (1-slot)	24	28
AUDIX...65	ADSX-2 (2-slot)	38	42
AUDIX...66	ADSX-3 (3-slot)	52	56
AUDIX...67	ADSX-4 (4-slot)	66	70
AUDIX...68	ADSXW-1 (2-slot)	42	46
AUDIX...69	ADSXW-2 (2-slot)	74	78

Accessories

Various air diffusers

- Nozzle jet diffuser DSA
- Slot diffuser DSC, DSX, and DSXW



SCHAKO stands for competence in the ventilation and air conditioning technology. The quality standard and the reliability of our products are well-known throughout Europe. In our own test laboratories we develop solutions which sustainably optimise the indoor climate in work environments and public spaces. With sites in Germany, Spain, Hungary and Turkey we deliver quickly and flexibly in all of Europe.

We carry a broad standard range and are optimally geared to meet special air demands with individual and intelligent solutions.

Pure competence in air

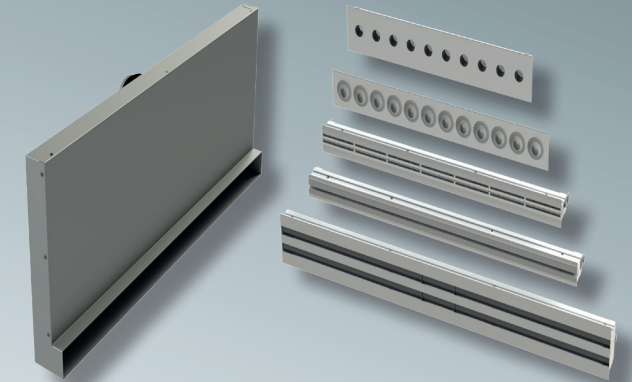
As specialists, the companies of **SCHAKO Group – ADMECO, NOVenco Building & Industry, REVEN, SCHAKO, SCHNEIDER Elektronik and SIROCCO** – provide a unique portfolio of ventilation, air conditioning, smoke extraction and fire protection products and system solutions for the commercial construction, public buildings, canteen kitchens, laboratories, the process industry, stairwells, underground car parks and tunnel systems.

SCHAKO Ferdinand Schad KG

Steigstraße 25- 27
D-78600 Kolbingen
Germany
schako.com
Version: 2021-04-09



Pure competence in air.



AUDIX

**Cross-talk sound attenuator box
for use in supply and return air installations**

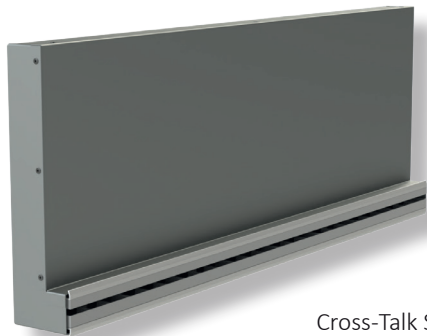
The SCHAKO cross-talk sound attenuator box performs the same function as the cross-talk sound attenuators previously inserted separately in the duct system, for which rarely enough space is available. The transmission of cross-talk sound through the ducting system is thus effectively prevented.



Areas of application

No weakening of the dry building wall

If the SCHAKO cross-talk sound attenuator box AUDIX is installed, additional cross-talk sound attenuators are not required and the integrated cross-talk sound attenuator saves space in the corridor area. The dimensions of the SCHAKO cross-talk sound attenuator box AUDIX are adapted to the requirements of dry construction and can be completely integrated into lightweight partition walls. High normalised sound level difference and building sound absorption coefficient up to 38 dB.



Cross-Talk Sound Attenuator
Model AUDIX® with slot diffuser SCHAKO DSXW



Function

Effective prevention of sound transmission

The integrated cross-talk sound attenuator performs the same function as the cross-talk sound attenuators previously inserted separately into the duct system, for which rarely enough space is available. The transmission of cross-talk sound through the ducting system is thus effectively prevented.

Draught-free air pattern and long throws

The slot diffusers from SCHAKO integrated into the AUDIX unit achieve a draught-free air pattern with long throws

Benefits

The cross-talk sound attenuator box AUDIX reduces the installation costs, as additional cross-talk sound attenuators are not required and the integrated cross-talk sound attenuator saves space in the corridor area. The plenum box can be combined with the proven slot diffusers from SCHAKO, thus allowing greater design freedom. This is reinforced as on each axis a partition wall can be integrated.

Performance values

Volumetric flows of up to 120 m³/h in supply and return air at a sound power level of 35 dB(A) and a length of 500 mm and a normalised sound level difference $D_{n,e,w}$ of up to 57 dB and a building sound absorption coefficient R_w of 38 dB, depending on the air diffuser used.

Various covers

