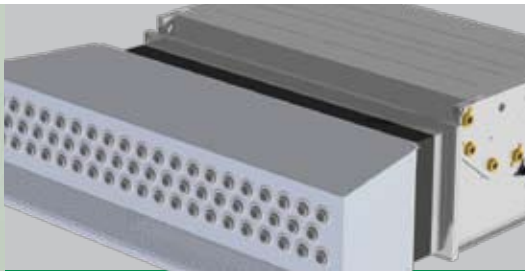


SPACE-SAVING



QUIET



COMFORTABLE

## Fan coil unit model Aquaris Silent equipped with combined supply and return air diffuser model KWB

the resulting forced air circulation en-  
ables optimum room flow

Air diffusers

**Air to water systems**

Ventilation grilles

Fire prevention

Sound insulation

Building control system

Living space ventilation

Shut-off devices



Control units

Filter diffusers

Laboratory ventilation  
systems



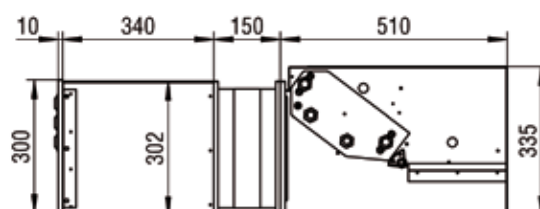
# Aquaris KWB

## meets the comfort requirements according to DIN EN 13779

The system solution of the Aquaris Silent fan coil unit in conjunction with the combined supply and return air diffuser KWB is designed for installation in suspended corridor ceilings for the air-conditioning of offices, thus allowing the entire room height to be fully used. The arrangement on one side of the room blows the air up to 5 m tangentially into the room. In this KWB model, a stable air jet is produced, which is stable even when the temperature difference is  $< 10\text{ K}$  and does not drop uncontrollably into the occupied area. The developing forced air circulation enables optimum room flow, and fresh supply air is distributed uniformly over the entire room. The adjustable nozzles allow the air flow to be set to a divergent flow, thus increasing the induction and a very good reduction in temperature and speed as a result of this. The high inductive effect gives an even temperature distribution also in the heating mode. The components tailored to one another allow a cost-efficient and quick installation in the suspended ceilings of the corridor areas next to the rooms to be air-conditioned. The sound-optimised housing guarantees a very quiet operation.

### Further properties:

- Air-conditions and dehumidifies while meeting the comfort requirements according to DIN EN 13779
- The sensible cooling capacity is up to 1.46 kW at air flow rates of  $315\text{ m}^3/\text{h}$ .
- Available in 2-pipe or 4-pipe design
- As standard three speeds are possible
- Filter easy to replace without requiring special tools.
- Control via 3-speed switch or by means of room temperature sensor, depending on room temperature.
- 2 sizes for different performance requirements



	Length	
	L	L1
Aquaris KWB-10	1000	697
Aquaris KWB-20	1500	912

	Aquaris KWB-10 2-pipe			Aquaris KWB-20 2-pipe		
	max	medium	min	max	medium	min
Air volume ( $\text{m}^3/\text{h}$ )	200	140	95	315	260	230
Total capacity (kW)	1,27	0,95	0,68	1,95	1,67	1,51
Sensible capacity (kW)	0,95	0,7	0,49	1,46	1,24	1,12
Amount of water ( $\text{l/h}$ )	219	163	116	335	287	259
Water-side pressure loss (kPa)	7,42	4,4	2,44	6,42	4,88	4,09
Sound power [dB(A)]	40,9	33,9	28,3	43,1	38,7	35,7
Sound pressure level [dB(A)]	36,6	29,6	24	38,8	34,4	31,4

