

FG

Grease trap grille

## Table of Contents

|   |    |
|---|----|
| Function and use .....                          | 3  |
| Models .....                                    | 4  |
| Mounting .....                                  | 4  |
| Processing .....                                | 4  |
| Accessories .....                               | 4  |
| Dimensions FG-...-L .....                       | 5  |
| Dimensions FG-...-M .....                       | 6  |
| Dimensions of accessories .....                 | 7  |
| Plenum box (-AK-47 / -AK-49) .....              | 7  |
| Damper (-DK0 / -DK1 / -DK2), for AK-... .....   | 11 |
| Rubber lip seal (-GD0 / -GD1), for AK-... ..... | 11 |
| Insulation (-I0 / -Ii / -Ia), for AK-... .....  | 11 |
| Installation frame (-ERO / -ER1 / -ER2) .....   | 12 |
| Mounting options .....                          | 13 |
| Screw mounting (-SM, standard) .....            | 13 |
| Technical data .....                            | 14 |
| Pressure loss and noise level .....             | 14 |
| Legend .....                                    | 15 |
| Order code .....                                | 16 |
| Order code AK .....                             | 17 |
| Specification text .....                        | 19 |

## FUNCTION AND USE

Grease trap grille made of natural colour anodised aluminium or sheet steel painted to RAL 9010 (white) for wall or ceiling installation with inserted, replaceable grease trap grille insert in special design. The FG-...-L model includes grease trap blades and the FG-...-M model has a grease collection mat.

The grease trap grille inserts made of aluminium can be easily taken out for cleaning by turning the sash locks.

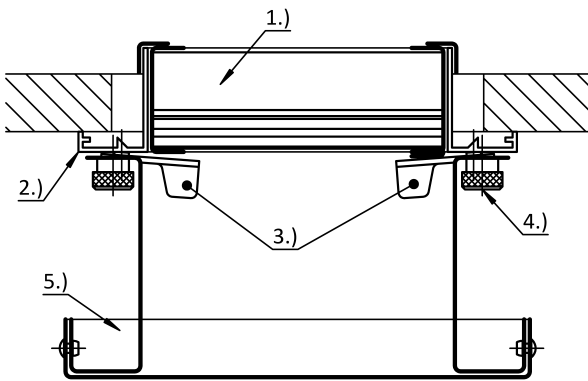
### Cleaning

The grease trap collector on the grease trap grille FG-D-... is unscrewed from the frame by loosening the knurled screw. The grease trap insert can then be taken out of the frame by turning the sash locks.

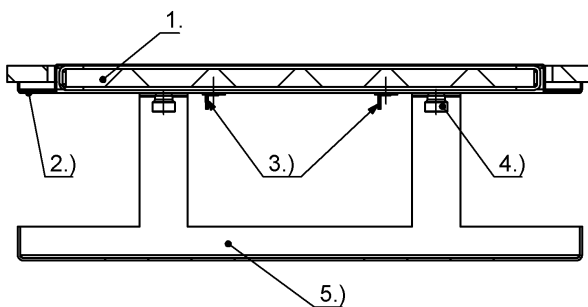
With the grease trap grille FG-W-..., the grease trap collector can be taken out of the frame together with the grease trap insert by turning the sash locks.

The grease trap filter can be cleaned simply in hot water solution and used again.

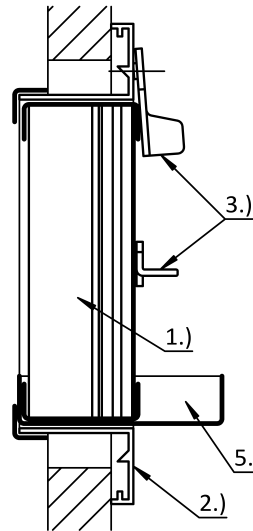
### FG-D-L-...



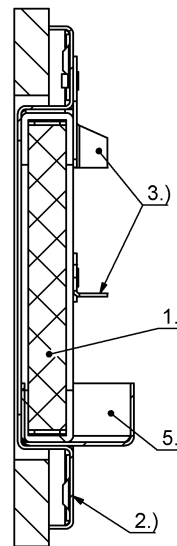
### FG-D-M-...



### FG-W-L-...



### FG-W-M-...



1. Grease trap blade (FG-...-L-...) / Grease collection mat (FG-...-M-...)
2. Frame
3. Sash lock
4. Knurled screw (thumb screw)
5. Grease trap collector

## Models

|              |                            |
|--------------|----------------------------|
| FG-D-...     | for ceiling installation   |
| FG-W-...     | for wall mounting          |
| FG-...-L-... | with grease trap blades    |
| FG-...-M-... | with grease collection mat |
| FG-...-N-... | One-off design             |

## Mounting

- Screw mounting (-SM, standard)
  - Screws must be provided on site.

## Processing

### Frame

- Natural colour anodised aluminium E6/EV1 (only for -L) (-AL-ELOX)
- Painted sheet steel (only for -M) (-SB)
  - painted to RAL9010 (white) (-SB-9010, standard)
  - painted to an RAL colour of your choice (-SB-xxxx, at an extra charge)

### Grease trap insert (only for -L)

- Natural colour anodised aluminium E6/EV1 (only for -L) (-AL-ELOX)

### Grease collection mat (only for -M)

- Aluminium mesh (15 mm)

### Grease trap collector

- Natural colour anodised aluminium E6/EV1 (only for -L) (-AL-ELOX)
- Painted sheet steel (only for -M) (-SB)
  - painted to RAL9010 (white) (-SB-9010, standard)
  - painted to an RAL colour of your choice (-SB-xxxx, at an extra charge)

## Accessories

### Plenum box (-AK-47/-49)

Rectangular design, made of galvanised sheet steel (-SV, standard), housing with round connection spigot and mounting brackets. Single design (-N) and screw mounting (-SM)

- Air diffuser:
  - suitable for FG-...-M-... (AK-47)
  - suitable for FG-...-L-... (AK-49)
- Length
  - 315 mm (-00315)
  - 415 mm (-00415) (not possible for FG-...-L-...)
  - 515 mm (-00515)
  - 615 mm (-00615) (not possible for FG-...-L-...)
  - 815 mm (-00815)
  - 1015 mm (-01015)
- Height:
  - 105 mm (-105)
  - 205 mm (-205)
  - 305 mm (-305)

Construction subject to change. No return possible.

- Damper:
  - Without damper (-DK0) (standard)
  - with damper (-DK1), made of galvanised sheet steel, in the plenum box housing, adjustable, for simple air volume regulation (standard for spigot position -S1)
  - with damper (-DK2), same as DK1 but with cable-operated adjustment (standard for spigot position -S0 / -S4)
- Rubber lip seal:
  - without rubber lip seal (-GD0) (standard)
  - with rubber lip seal (-GD1), made of special rubber, at the connection spigot
- Insulation:
  - Without insulation (-I0) (standard)
  - with internal insulation (-Ii), thermal insulation inside the plenum box
  - with external insulation (-Ia), thermal insulation at the outside of the plenum box
- Height of plenum box:
  - Standard height of plenum box (-KHS)
  - Height of box in mm (-xxx) (minimum height = spigot diameter + 87 mm, but at least 200 mm) (always with 3 digits)
- Width of plenum box:
  - Standard width of plenum box (-KBS)
  - Width of plenum box in mm (-xxx) (minimum width = spigot diameter + 30 mm, minimum difference between KBS and KB2 = 40 mm) (always with 3 digits)
- Spigot diameter:
  - Standard spigot diameter (-SDS)
  - Spigot diameter in mm, freely selectable (-xxx, always with 3 digits)
- Spigot position:
  - Spigot from above (-S0)
  - Lateral spigot on the plenum box (-S1) (standard)
  - Spigot front side (-S4)

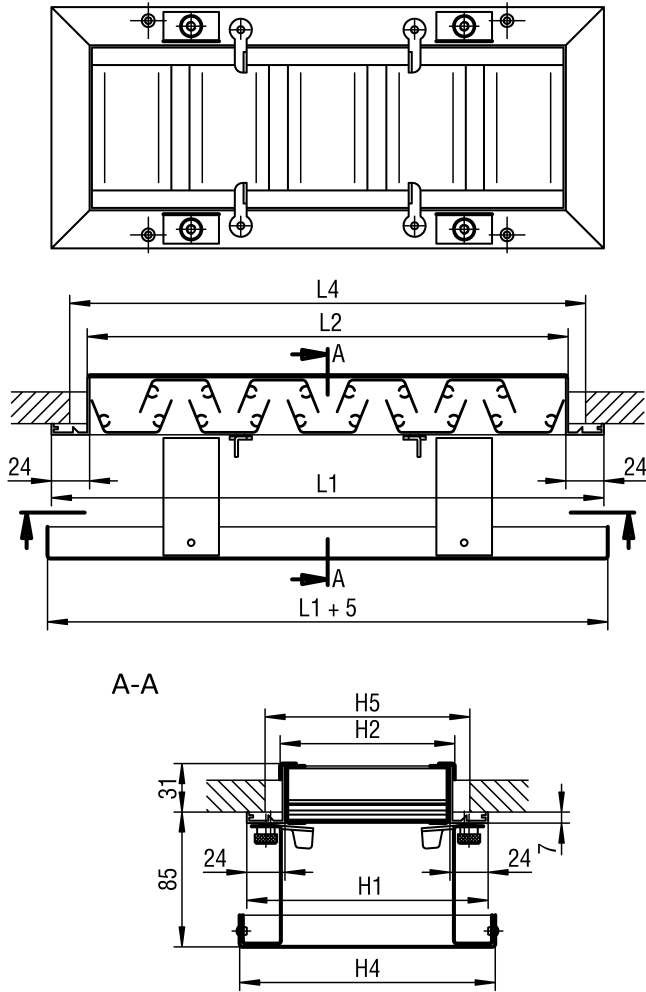
### Installation frame (-ER0 / -ER1 / -ER2)

- Without installation frame (-ER0)
- with installation frame made of galvanised sheet steel (not possible with plenum box -AK):
  - without wall anchors (-ER1)
  - with wall anchors (-ER2)

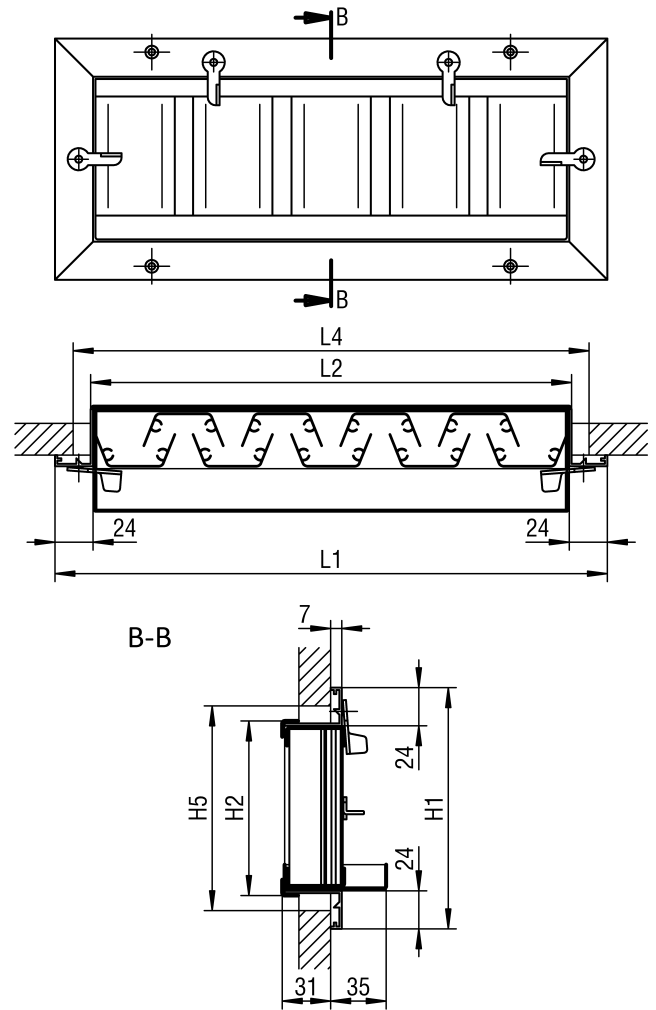
### DIMENSIONS FG-...-L

With grease trap blades

FG-D-L-... (for ceiling installation)



FG-W-L-... (for wall installation)



Available sizes FG-D-L-... / FG-W-L-...

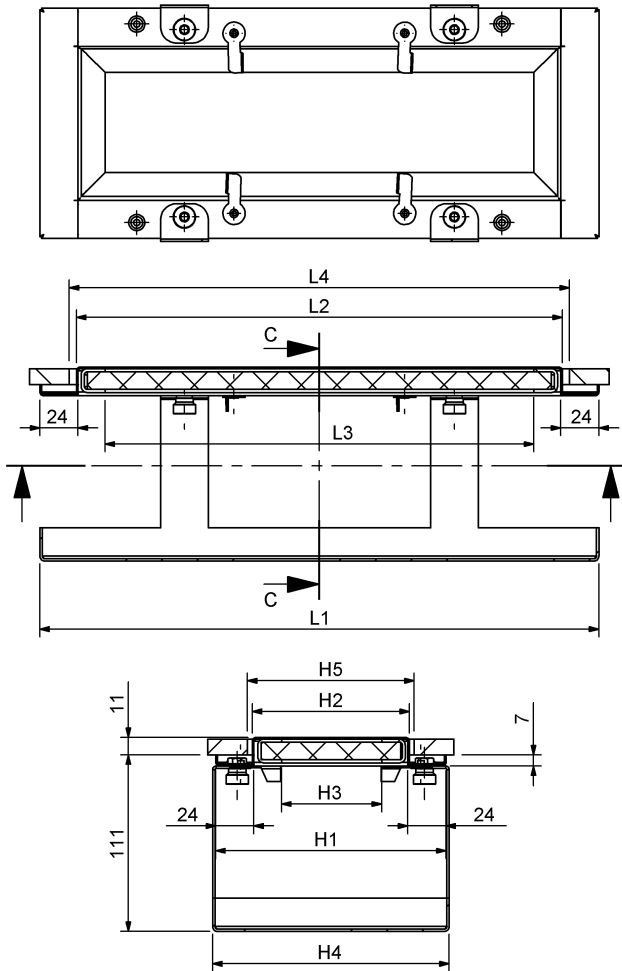
| L    | L1   | L2   | L3   | L4   | H   | H1  | H2  | H4  | H5  |
|------|------|------|------|------|-----|-----|-----|-----|-----|
| 315  | 348  | 304  | 353  | 325  | 105 | 152 | 110 | 157 | 115 |
| 515  | 548  | 504  | 553  | 525  | 205 | 252 | 210 | 257 | 215 |
| 815  | 848  | 804  | 853  | 825  | 305 | 352 | 310 | 357 | 315 |
| 1015 | 1048 | 1004 | 1053 | 1025 |     |     |     |     |     |

All combined lengths and heights available!

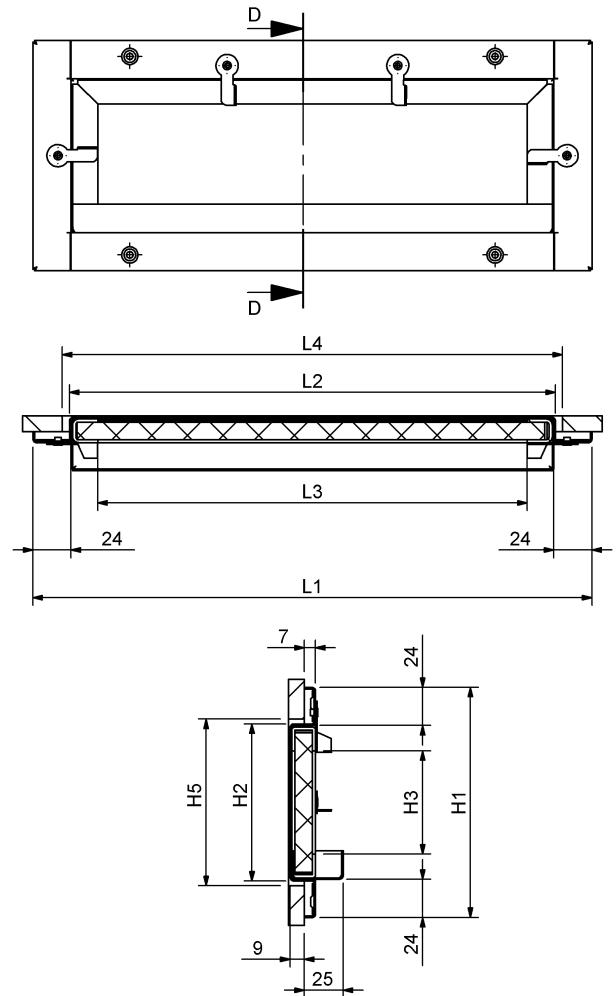
### DIMENSIONS FG-...-M

With grease collection mat

FG-D-M-... (for ceiling installation)



FG-W-M-... (for wall installation)



1.) Grease collection mat made of woven aluminium (15 mm)

Available sizes FG-D-M-... / FG-W-M-...

| L    | L1   | L2   | L3  | L4   |
|------|------|------|-----|------|
| 315  | 352  | 306  | 270 | 315  |
| 415  | 452  | 406  | 370 | 415  |
| 515  | 552  | 506  | 470 | 515  |
| 615  | 652  | 606  | 570 | 615  |
| 815  | 852  | 806  | 770 | 815  |
| 1015 | 1052 | 1006 | 970 | 1015 |

| H   | H1  | H2  | H3  | H4  | H5  |
|-----|-----|-----|-----|-----|-----|
| 105 | 145 | 99  | 63  | 149 | 105 |
| 205 | 245 | 199 | 163 | 249 | 205 |
| 305 | 345 | 299 | 263 | 349 | 305 |

All combined lengths and heights available!

Special sizes not possible.

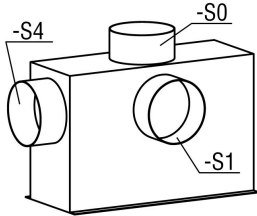
## DIMENSIONS OF ACCESSORIES

### Plenum box (-AK-47 / -AK-49)

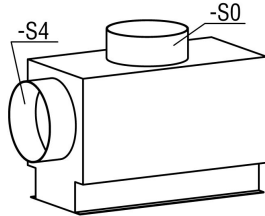
- AK-47: suitable for grease trap grille FG-...-M
- AK-49: suitable for grease trap grille FG-...-L

#### Spigot position

##### Straight plenum box:



##### Offset plenum box:



- Lateral spigot on the plenum box (-S1, standard)
- Spigot from above (-S0)
- Front side spigot (-S4, not possible for band design)

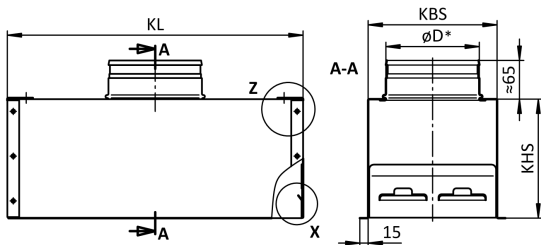
Spigot diameter for spigot position "Spigot front side (-S4)" is identical with "Lateral spigot on the box (-S1)".

Spigot diameter for spigot position "Spigot from above (-S0)" is in part not identical with "Lateral spigot on the box (-S1)".

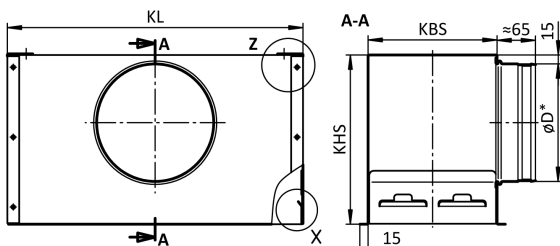
For the table of available sizes, see the next page.

#### Straight plenum box:

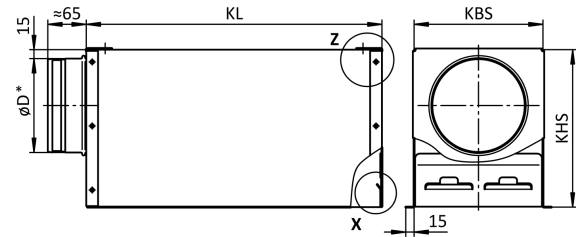
##### with spigot from above (-S0)



##### with lateral spigot on the plenum box (-S1)



##### with spigot front side (-S4)



\* External

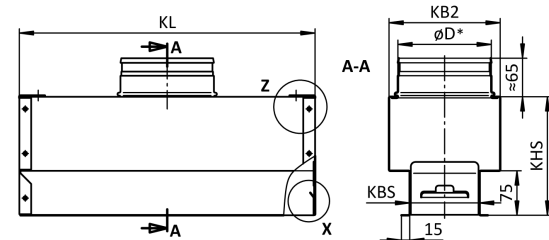
#### Offset plenum box:

If KBS is  $< (\text{øD}+30)$ , an offset plenum box will be manufactured.

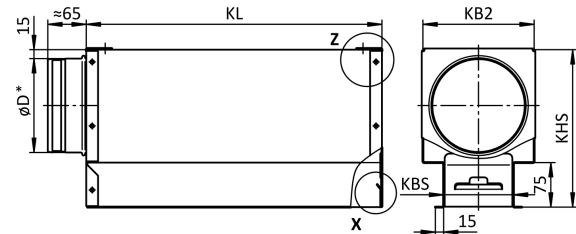
For model -S0:  $\text{KB2} = \text{øD}+30$

Minimum difference between KBS and KB2 = 40 mm

##### with spigot from above (-S0)

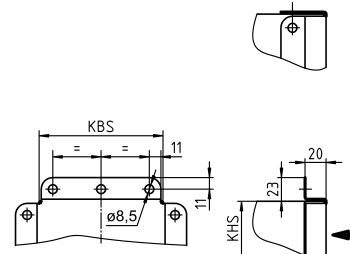


##### with lateral spigot on the plenum box (-S4)



\* External

#### Plenum box suspension



##### Detail Z

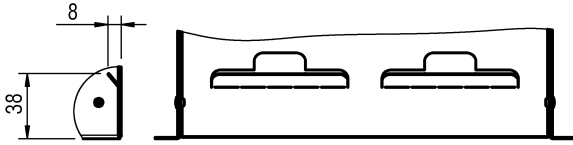
State of delivery with fitted mounting brackets

##### Detail Z

with bent fixing lugs

**Concealed mounting:**

**Detail X**



Concealed plates can be bent outwards, if necessary.

**Available sizes for AK-47**

| H   | KBS | L    | KL   | Spigot position -S1 (standard) |     |         |                  | Spigot position -S0 |         |         |                  | Spigot position -S4 |         |         |                  |
|-----|-----|------|------|--------------------------------|-----|---------|------------------|---------------------|---------|---------|------------------|---------------------|---------|---------|------------------|
|     |     |      |      | KHS                            | KB2 | n x øD  | Plenum box shape | KHS                 | KB2     | n x øD  | Plenum box shape | KHS                 | KB2     | n x øD  | Plenum box shape |
| 105 | 103 | 315  | 310  | 245                            | --  | 1x ø158 |                  | 200                 | 128     | 1x ø98  |                  | 265                 | 188     | 1x ø158 |                  |
|     |     | 415  | 410  |                                |     |         |                  |                     |         |         |                  |                     |         |         |                  |
|     |     | 515  | 510  |                                |     |         |                  |                     |         |         |                  |                     |         |         |                  |
|     |     | 615  | 610  | 285                            | --  | 1x ø198 |                  | 285                 | 228     | 2x ø98  |                  | 285                 | 228     | 1x ø198 |                  |
|     |     | 815  | 810  |                                |     |         |                  |                     |         |         |                  |                     |         |         |                  |
|     |     | 1015 | 1010 |                                |     |         |                  |                     |         |         |                  |                     |         |         |                  |
| 205 | 203 | 315  | 310  | 285                            | --  | 1x ø198 |                  | 200                 | 228     | 1x ø198 |                  | 285                 | 228     | 1x ø198 |                  |
|     |     | 415  | 410  |                                |     |         |                  |                     |         |         |                  |                     |         |         |                  |
|     |     | 515  | 510  |                                |     |         |                  |                     |         |         |                  |                     |         |         |                  |
|     |     | 615  | 610  | 335                            | --  | 1x ø248 |                  | 208                 | 2x ø178 |         | 335              | 278                 | 1x ø248 |         |                  |
|     |     | 815  | 810  |                                |     |         |                  |                     |         |         |                  |                     |         |         |                  |
|     |     | 1015 | 1010 |                                |     |         |                  |                     |         |         |                  |                     |         |         |                  |
| 305 | 303 | 315  | 310  | 335                            | --  | 1x ø248 |                  | 200                 | --      | 1x ø248 |                  | 335                 | --      | 1x ø248 |                  |
|     |     | 415  | 410  |                                |     |         |                  |                     |         |         |                  |                     |         |         |                  |
|     |     | 515  | 510  |                                |     |         |                  |                     |         |         |                  |                     |         |         |                  |
|     |     | 615  | 610  | 400                            | --  | 1x ø313 |                  | 400                 | 348     | 2x ø222 |                  | 400                 | 348     | 1x ø313 |                  |
|     |     | 815  | 810  |                                |     |         |                  |                     |         |         |                  |                     |         |         |                  |
|     |     | 1015 | 1010 |                                |     |         |                  |                     |         |         |                  |                     |         |         |                  |

Available sizes for AK-49

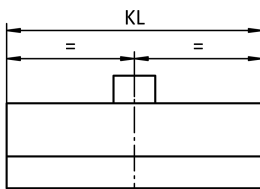
| H   | KBS | L    | KL   | Spigot position -S1 (standard) |     |               |                  | Spigot position -S0 |     |               |                  | Spigot position -S4 |     |               |                  |
|-----|-----|------|------|--------------------------------|-----|---------------|------------------|---------------------|-----|---------------|------------------|---------------------|-----|---------------|------------------|
|     |     |      |      | KHS                            | KB2 | n x $\phi D$  | Plenum box shape | KHS                 | KB2 | n x $\phi D$  | Plenum box shape | KHS                 | KB2 | n x $\phi D$  | Plenum box shape |
| 105 | 118 | 315  | 310  | 245                            | --  | 1x $\phi 158$ |                  | 200                 | 128 | 1x $\phi 98$  |                  | 245                 | 188 | 1x $\phi 158$ |                  |
|     |     | 515  | 510  |                                |     |               |                  |                     |     | 2x $\phi 98$  |                  |                     |     |               |                  |
|     |     | 815  | 810  | 285                            | --  | 1x $\phi 198$ |                  | 200                 | 128 | 2x $\phi 98$  |                  | 285                 | 228 | 1x $\phi 198$ |                  |
|     |     | 1015 | 1010 |                                |     |               |                  |                     |     | 2x $\phi 98$  |                  |                     |     |               |                  |
| 205 | 218 | 315  | 310  | 285                            | --  | 1x $\phi 198$ |                  | 200                 | 228 | 1x $\phi 198$ |                  | 285                 | 228 | 1x $\phi 198$ |                  |
|     |     | 515  | 510  |                                |     |               |                  |                     |     | 2x $\phi 178$ |                  |                     |     |               |                  |
|     |     | 815  | 810  | 335                            | --  | 1x $\phi 248$ |                  | 200                 | --  | 2x $\phi 178$ |                  | 335                 | 278 | 1x $\phi 248$ |                  |
|     |     | 1015 | 1010 |                                |     |               |                  |                     |     | 2x $\phi 178$ |                  |                     |     |               |                  |
| 305 | 318 | 315  | 310  | 335                            | --  | 1x $\phi 248$ |                  | 200                 | --  | 1x $\phi 248$ |                  | 335                 | --  | 1x $\phi 248$ |                  |
|     |     | 515  | 510  |                                |     |               |                  |                     |     | 2x $\phi 222$ |                  |                     |     |               |                  |
|     |     | 815  | 8610 | 400                            | --  | 1x $\phi 313$ |                  | 200                 | --  | 2x $\phi 222$ |                  | 400                 | 348 | 1x $\phi 313$ |                  |
|     |     | 1015 | 1010 |                                |     |               |                  |                     |     | 2x $\phi 222$ |                  |                     |     |               |                  |

n = number of spigots

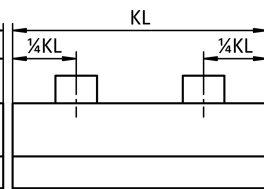
Number of spigots:

Spigot from above (-S0)

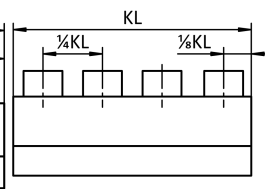
with 1 spigot



with 2 spigots



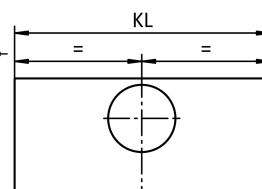
with 4 spigots



Lateral spigot (-S1)

(standard)

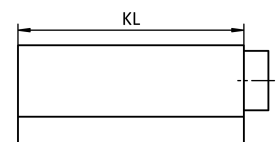
with 1 spigot



Lateral spigot (-S4) Band

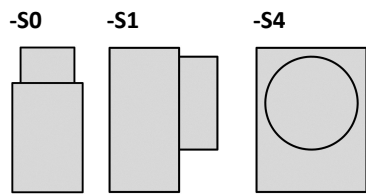
design not possible.

with 1 spigot

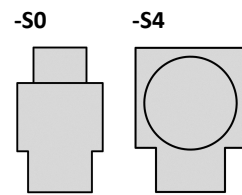


### Plenum box shape

#### Straight:



#### Offset:



Minimum height of KHS for spigot position -S1 / -S4:

$KHS_{min.} = \varnothing D + 87 \text{ mm}$ , but at least 200 mm

Minimum width KB2 with spigot position -S0 / -S4:

$KB2_{min.} = \varnothing D + 30 \text{ mm}$

Minimum difference between KBS and KB2 = 40 mm.

The dimension KBS cannot be changed.

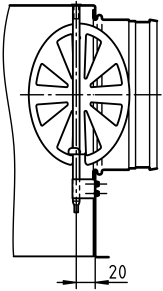
With spigot positions -S0 and -S4, if the spigot diameter is increased, only the offset plenum box shape is available.

## Damper (-DK0 / -DK1 / -DK2), for AK-...

- Without damper (-DK0) (standard)
- with damper (-DK1) (standard for spigot position -S1)
- with damper and cable-operated adjustment (-DK2) (standard for spigot position -S0/-S4)

### DK1:

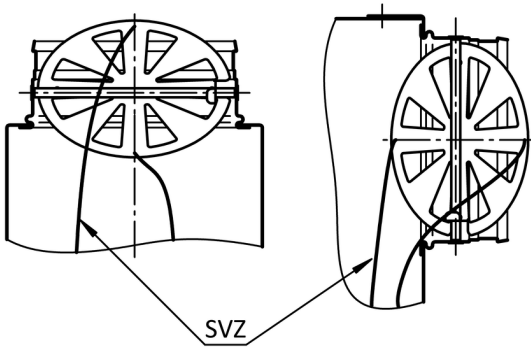
Lateral spigot -S1



### DK2: (with cable-operated adjustment):

Spigot from above -S0

Spigot front side -S4

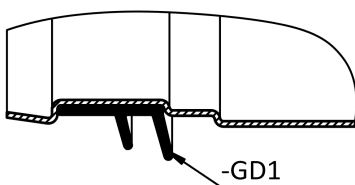


SVZ = cable-operated adjustment

## Rubber lip seal (-GD0 / -GD1), for AK-...

- without rubber lip seal (-GD0) (standard)
- with rubber lip seal (-GD1), made of special rubber

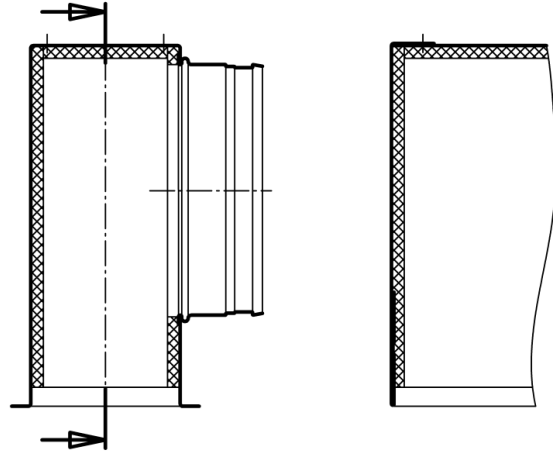
### Detail Y



## Insulation (-I0 / -Ii / -Ia), for AK-...

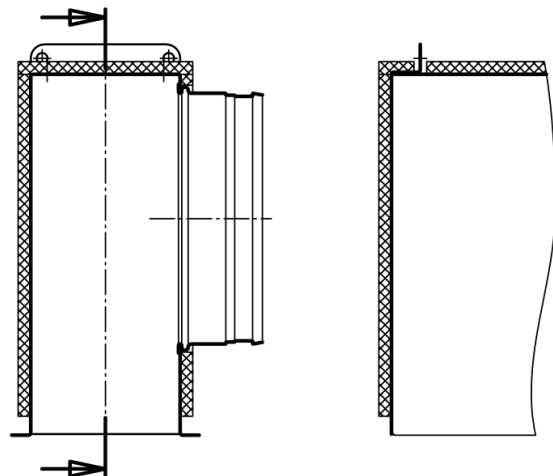
- Without insulation (-I0) (standard)
- With internal insulation (-Ii)
- With external insulation (-Ia)

### Internal insulation (-Ii)



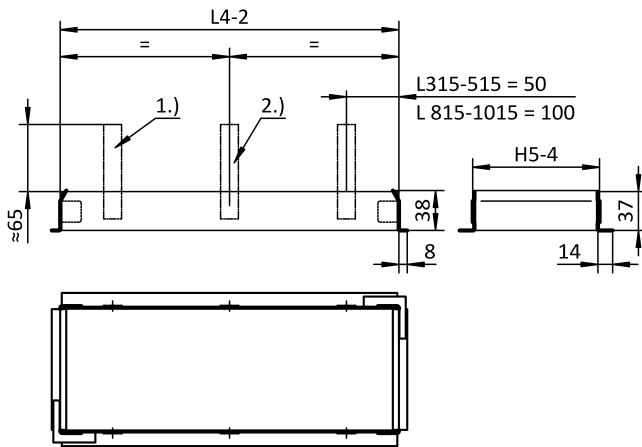
### External insulation (-Ia)

In case of an external insulation, the mounting brackets are already bent in the as-delivered condition.



### Installation frame (-ER0 / -ER1 / -ER2)

- without installation frame (-ER0) (standard)
- with installation frame without wall anchors (-ER1) (not possible for plenum box -AK)
- with installation frame with wall anchors (-ER2) (not possible for plenum box -AK)



1.) Wall anchors

2.) for  $L \geq 515$

Number of wall anchors:

Length  $L > 515$  mm = 4 wall anchors (2 per side)

Length  $L \geq 515$  mm = 6 wall anchors (3 per side)

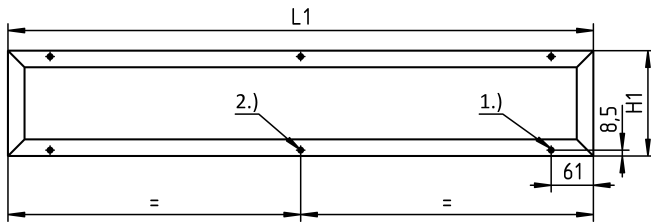
Installation frame E1 made of electrolytic galvanised sheet steel.

Installation frames are only delivered with wall anchors on special request (-ER2, at an extra charge).

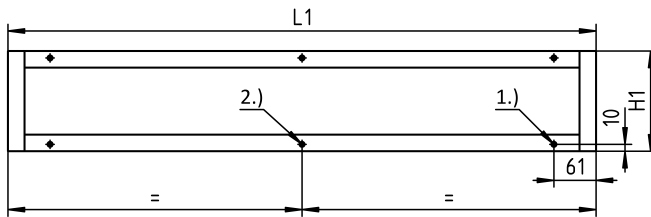
## MOUNTING OPTIONS

### Screw mounting (-SM, standard)

FG-...-L-... (with grease trap blades)



FG-...-M-... (with grease collecting mat)



1.) Countersunk for screws DIN ISO 7051 ST 3.9

2.) From L > 515

#### FG-...-L-...

| L    | L1   |
|------|------|
| 315  | 348  |
| 515  | 548  |
| 815  | 848  |
| 1015 | 1048 |

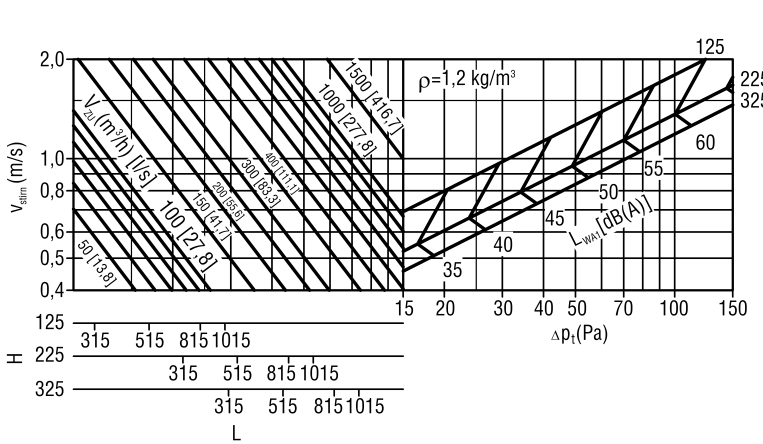
| H   | H1  |
|-----|-----|
| 105 | 152 |
| 205 | 252 |
| 305 | 352 |

#### FG-...-M-...

| L    | L1   | H   | H1  |
|------|------|-----|-----|
| 315  | 352  | 105 | 145 |
| 415  | 452  | 205 | 245 |
| 515  | 552  | 305 | 345 |
| 615  | 652  |     |     |
| 815  | 852  |     |     |
| 1015 | 1052 |     |     |

**TECHNICAL DATA**  
Pressure loss and noise level

**FG-...-L**

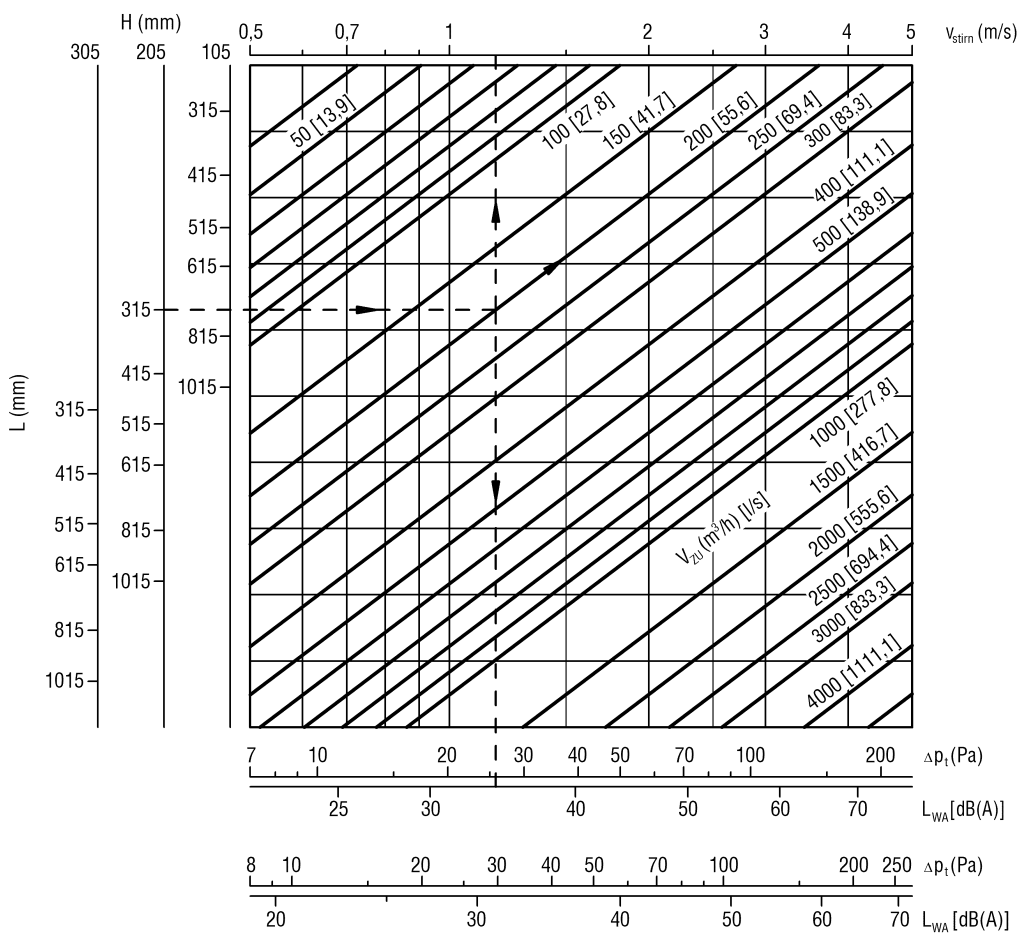


**Correction factor KF [dB(A)]**

|        |     | L (mm)     |     |     |      |
|--------|-----|------------|-----|-----|------|
|        |     | 315        | 515 | 815 | 1015 |
| H (mm) | 125 | -2         | 0   | +2  | +3   |
|        | 225 | -2         | 0   | +2  | +3   |
|        | 325 | -2         | 0   | +2  | +3   |
|        |     | KF [dB(A)] |     |     |      |

**LWA = LWA1 + KF**

**FG-...-M-...**



The air velocities  $v_{front}$  (m/s) are based on L3 x H3. To achieve optimal grease collection, air velocity should be between 1 - 2 m/s.

Construction subject to change. No return possible.

**LEGEND**

|              |                           |  |
|--------------|---------------------------|--|
| $V_{ZU}$     | (m <sup>3</sup> /h) [l/s] | = Supply air volume  |
| $V_x$        | (m <sup>3</sup> /h) [l/s] | = Total air jet volume at point x  |
| $v_{stirn}$  | (m/s)                     | = Intake velocity, blower stream velocity, outflow velocity, relative to $A_{front}$ |
| $\rho$       | (kg/m <sup>3</sup> )      | = Density  |
| $\Delta p_t$ | (Pa)                      | = Pressure loss  |
| $L_{WA}$     | [dB(A)]                   | = A-weighted sound power level ( $L_{WA} = L_{WA1} + KF$ )                           |
| $L_{WA1}$    | [dB(A)]                   | = A-weighted sound power level, relative to L=515                                    |
| KF           | (-)                       | = Correction factor  |
| L            | (mm)                      | = Length   |
| H            | (mm)                      | = Height   |

## ORDER CODE

| 01             | 02    | 03            | 04     | 05     | 06                   |
|----------------|-------|---------------|--------|--------|----------------------|
| Type           | Model | Grille insert | Length | Height | Single / band design |
| <b>Example</b> |       |               |        |        |                      |
| FG             | -W    | -M            | -00315 | -205   | -N                   |

| 07       | 08    | 09       | 10                 |
|----------|-------|----------|--------------------|
| Material | Paint | Mounting | Installation frame |
|          |       |          |                    |
| -SB      | -9010 | -SM      | -ER1               |

### Sample

#### FG-W-M-00315-205-N-SB-9010-SM-ER1

Grease trap grille FG I for wall mounting I with grease collection mat I grille length 315 mm I grille height 205 mm I single design I painted sheet steel lackiert I RAL colour 9010 I screw mounting I with installation frame

### Order details

#### 01 - Type

FG = Grease trap grille FG

#### 02 - Model

D = for ceiling installation  
W = for wall mounting

#### 03 - Grille insert

L = with grease trap blades  
M = with grease collection mat

#### 04 - Length

00315 = Grille length 315 mm  
00415 = Grille length 415 mm (not possible for FG-...-L-...)  
00515 = Grille length 515 mm  
00615 = Grille length 615 mm (not possible for FG-...-L-...)  
00815 = Grille length 815 mm  
01015 = Grille length 1015 mm

#### 05 - Height

105 = Grille height 105 mm  
205 = Grille height 205 mm  
305 = Grille height 305 mm

#### 06 - Single / band design

N = One-off design

#### 07 - Material

SB = Painted sheet steel (only for FG-...-M)  
AL = Aluminium natural colour anodised aluminium (only for FG-...-L)

#### 08 – Paint

9010 = RAL9010 (white, standard for -SB)  
ELOX = natural colour anodised (E6/EV1, standard for -AL)  
xxxx = RAL colour can be freely selected (always with 4 digits)

#### 09 - Mounting

SM = Screw mounting (screws must be provided on site)

#### 10 - Installation frame

ER0 = Without installation frame (standard)  
ER1 = With installation frame without wall anchors (not possible for plenum box -AK)  
ER2 = With installation frame with wall anchors (not possible for plenum box -AK)

## ORDER CODE AK

| 01             | 02           | 03     | 04     | 05                   | 06       | 07       |
|----------------|--------------|--------|--------|----------------------|----------|----------|
| Type           | Air diffuser | Length | Height | Single / band design | Mounting | Material |
| <b>Example</b> |              |        |        |                      |          |          |
| AK             | -49          | -00315 | -105   | -N                   | -SM      | -SV      |

| 08     | 09              | 10         | 11                   | 12                  | 13              | 14              |
|--------|-----------------|------------|----------------------|---------------------|-----------------|-----------------|
| Damper | Rubber lip seal | Insulation | Height of plenum box | Width of plenum box | Spigot diameter | Spigot position |
| -DK0   | -GD1            | -IO        | -KHS                 | -KBS                | -SDS            | -S1             |

### Sample

#### AK-49-00315-105-N-SM-SV-DK0-GD1-IO-KHS-KBS-SDS-S1

Plenum box, rectangular design I suitable for grease trap grille FG-...-L I length 315 mm I height 205 mm I single length I with screw mounting I galvanised sheet steel I without damper I with rubber lip seal I without plenum box insulation I height of plenum box standard I width of plenum box standard I spigot diameter standard | lateral spigot

### Order details

#### 01 - Type

AK = Plenum box, rectangular design

#### 02 - Air diffuser

47 = suitable for grease trap grille FG-...-M  
49 = suitable for grease trap grille FG-...-L

#### 03 - Length

00315 = Grille length 315 mm  
00415 = Grille length 415 mm (not possible for FG-...-L-...)  
00515 = Grille length 515 mm  
00615 = Grille length 615 mm (not possible for FG-...-L-...)  
00815 = Grille length 815 mm  
01015 = Grille length 1015 mm

#### 04 - Height

105 = Grille height 105 mm  
205 = Grille height 205 mm  
305 = Grille height 305 mm

#### 05 - Single / band design

N = Single design (standard)

#### 06 - Mounting

SM = Screw mounting (standard for AK-30-..., screws must be provided on site, not possible for AK-29-...)

#### 07 - Material

SV = Galvanised sheet steel (standard)

#### 08 - Damper

DK0 = without damper (standard)  
DK1 = with damper (standard for spigot position -S1)  
DK2 = with damper and cable-operated adjustment (standard for spigot position -S0/-S4)

#### 09 - Rubber lip seal

GD0 = without rubber lip seal (standard)  
GD1 = with rubber lip seal

#### 10 - Insulation

IO = without insulation (standard)  
li = With internal insulation  
la = With external insulation

#### 11 - Height of plenum box

KHS = Standard height of plenum box  
xxx = Height of plenum box in mm (minimum height = spigot diameter +87 mm, always with 3 digits)

#### 12 - Width of plenum box

KBS = Standard width of box  
xxx = width of plenum box in mm (minimum width = spigot diameter + 30 mm, minimum difference between KBS and KB2 = 40 mm, always with 3 digits)

#### 13 - Spigot diameter

SDS = Spigot diameter standard.  
xxx = Spigot diameter in mm (always with 3 digits)

#### 14 - Spigot position

- S0 = Spigot from above
- S1 = Lateral spigot on the plenum box (standard)
- S4 = Front side spigot (not possible for band design)

## SPECIFICATION TEXT

Grease trap grille for ceiling install consisting of a frame and grease trap collector. Easy to disassemble for cleaning purposes by turning the sash locks. Single design (-N), with screw mounting (-SM, screws must be provided on site).

Made by: SCHAKO Type FG-...-N-...-SM-...

### Model:

- for ceiling installation (-D)
- for wall mounting (-W)

### Grille insert:

- with grease trap blades (-L), exchangeable, made of aluminium
- with grease collecting mat (-M), exchangeable, made of woven aluminium (15 mm)

### Length:

- 315 mm (-00315)
- 415 mm (-00415) (not possible for FG-...-L-...)
- 515 mm (-00515)
- 615 mm (-00615) (not possible for FG-...-L-...)
- 815 mm (-00815)
- 1015 mm (-01015)

### Height:

- 105 mm (-105)
- 205 mm (-205)
- 305 mm (-305)

### Material / coating (faceplate):

- Coated steel plate (-SB)
  - coated in RAL9010 (-9010)
  - painted to a RAL-colour, freely selectable (-xxxx, at an extra charge)
- Aluminium
  - natural colour anodised (E6/EV1) (-AL-ELOX)

### Accessories:

- Plenum box, in rectangular design, made of galvanised sheet steel (-SV, standard), housing with round connection spigot and mounting brackets. Single design (-N) and screw mounting (-SM)
  - Air diffuser:
    - suitable for FG-...-M-... (AK-47)
    - suitable for FG-...-L-... (AK-49)
  - Length:
    - 315 mm (-00315)
    - 415 mm (-00415) (not possible for FG-...-L-...)
    - 515 mm (-00515)
    - 615 mm (-00615) (not possible for FG-...-L-...)
    - 815 mm (-00815)
    - 1015 mm (-01015)

- Height:
  - 105 mm (-105)
  - 205 mm (-205)
  - 305 mm (-305)
- Damper:
  - Without damper (-DK0) (standard)
  - with damper (-DK1), made of galvanised sheet steel, in the plenum box housing, adjustable, for simple air volume regulation. (standard for spigot position -S1)
  - with damper (-DK2), same as DK1 but with cable-operated adjustment (standard for spigot position -S0 / -S4)
- Rubber lip seal:
  - without rubber lip seal (-GD0) (standard)
  - with rubber lip seal (-GD1), at the connection spigot
- Insulation:
  - Without insulation (-I0) (standard)
  - with internal insulation (-Ii), thermal insulation inside the plenum box
  - with external insulation (-Ia), thermal insulation at the outside of the plenum box
- Height of plenum box:
  - Standard height of plenum box (-KHS)
  - Height of box in mm (-xxx) (minimum height = spigot diameter + 87 mm, but at least 200 mm) (always with 3 digits)
- Width of plenum box:
  - Standard width of plenum box (-KBS)
  - Width of plenum box in mm (-xxx) (minimum width = spigot diameter + 30 mm, minimum difference between KBS and KB2 = 40 mm) (always with 3 digits)
- Spigot diameter:
  - Standard spigot diameter (-SDS)
  - Spigot diameter in mm, freely selectable (-xxx, always with 3 digits)
- Spigot position:
  - Spigot from above (-S0)
  - Lateral spigot on the plenum box (-S1) (standard)
  - Spigot front side (
- Installation frame (-ER0 / -ER1 / -ER2)
  - without installation frame (-ER0)
  - with installation frame, made of galvanised sheet steel (not possible with plenum box -AK):
    - without wall anchor (-ER1)
    - with wall anchor (-ER2)