



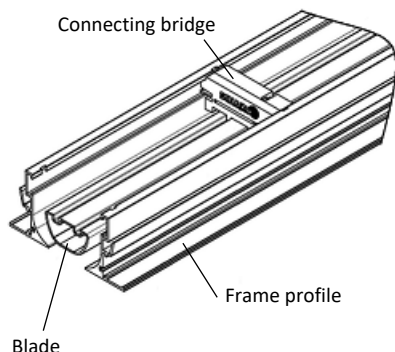
DSCXLS
Slot diffuser

Contents

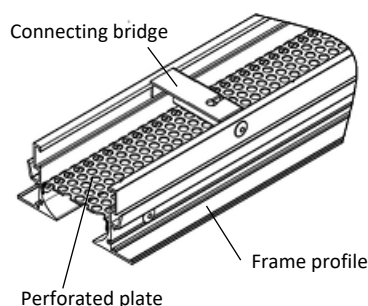
Overview of product versions.....	2
Function and use	2
Models.....	3
Mounting.....	3
Quick selection	4
Blade position for air jet	4
Processing.....	4
Accessories	5
Dimensions	6
Dimensions of accessories.....	7
Fastening methods	15
Assemblyoverview.....	17
Technical data	19
Legend	21
Order code Slot diffuser	22
Plenum box order code	24
Order code corner angle.....	25
Specification text	26

OVERVIEW OF PRODUCT VERSIONS

DSCXLS-1-Z-... (supply air)



DSCXLS-1-A-... (return air)



FUNCTION AND USE

The slot diffuser DSCXLS is suitable for use in rooms with a height between 2.6 m to 4 m with open visible mounting in the ceiling profile. The air deflection blades adjustable from below allow a versatile application. The outflow direction can be adjusted from a vertical throw in heating mode to a horizontal throw in cooling mode. A subsequent change of the air throw direction on site is possible at any time, even when the diffuser has already been fitted. If the desired air throw is specified in the order, it will be set at the factory. Without order details the blade position -L (horizontal left) is set.

Thanks to the aerodynamic profile of the blade, the maximum induction is achieved and the speed and temperature difference of the supply air jet are reduced effectively. Due to the central housing of the air deflection blade, the free cross-section always remains the same. Pressure loss and sound power level remain therefore constant even when the blades are adjusted. The resistance generated by the blades ensures that the supply air is distributed equally across the whole length of the slot diffuser.

The slot diffuser DSCXLS is manufactured as a 1-slot model. The large free cross-section allows a greater volumetric flow compared with other slot diffusers. Thanks to its stable air jet and high induction, DSCXLS slot diffuser can be used in the cooling mode up to $\Delta T \leq 12$ K.

The slot diffuser is available either as a single piece or in band design. Accessories such as end pieces and corner angles enable a versatile use of the slot diffuser. The return air model is fitted with a black perforated plate for easy cleaning from below through the slots instead of air deflection blades.

The connection to the ductwork is done via the plenum box. At an extra charge, a damper adjustable from below can be installed in the connection spigot for air volume regulation. The plenum box can also be insulated either internally or externally.

MODELS

DSCXLS-1-...	1-slot, with 30 mm slot width
DSCXLS-...-Z	supply air (with blades)
DSCXLS-...-A	return air (without blades, with perforated plate)
DSCXLS-...-R0	frame profile STANDARD (with support profile, for visible installation on the ceiling).
DSCXLS-...-V	blades with vertical throw
DSCXLS-...-L	blades with horizontal one-way throw to the left (standard)
DSCXLS-...-R	blades with one-way horizontal throw to the right
DSCXLS-...-0	without blades (for return air)
DSCXLS-...-N	single design (length max. 1500 mm)
DSCXLS-...-B	band design (available lengths according to SCHAKO standard for band design)

MOUNTING

Without connection (-00)

- Only possible without plenum box.

Permanent connection with plenum box (-FV)

- Only possible with plenum box.
- Only for return and supply air model.
- The slot diffuser is permanently connected to the plenum box.

Concealed mounting with plenum box (-VM)

- Only possible with plenum box.
- Only for return and supply air model.
- The slot diffuser is screwed to the pole brace in the plenum box housing with concealed screws.
- Frame with foam gasket.
- Plenum box mounted ex works.

Mounting with counter pole brace (-GT)

- Only possible without plenum box.
- Screws and pole brace traps are supplied loose (2 pieces).
- Pole brace traps consisting of folded galvanised sheet steel and pole brace made of extruded aluminium profile with DIN thread.
- The slot diffuser is screwed to the counter pole brace (pole brace strap) with concealed screws (included in delivery).
- **For mounting, access on the rear is required!**

Mounting with clamp strap (-KB)

- Only possible without plenum box.
- Screws and clamp straps are supplied loose (2 pieces).
- Clamp strap made of galvanised sheet steel.
- The slot diffuser is screwed to the clamp strap with concealed screws (included in delivery).
- **For mounting, access on the rear is not required!**

Mounting with suspension lugs (-AL)

- Only possible without plenum box.
- 4 pieces, supplied loose and not folded
- The slot diffuser is fastened to 4 suspension brackets.
- Suspension lug made of galvanised sheet steel, with holes for hook mounting.

Fishplate (-VL)

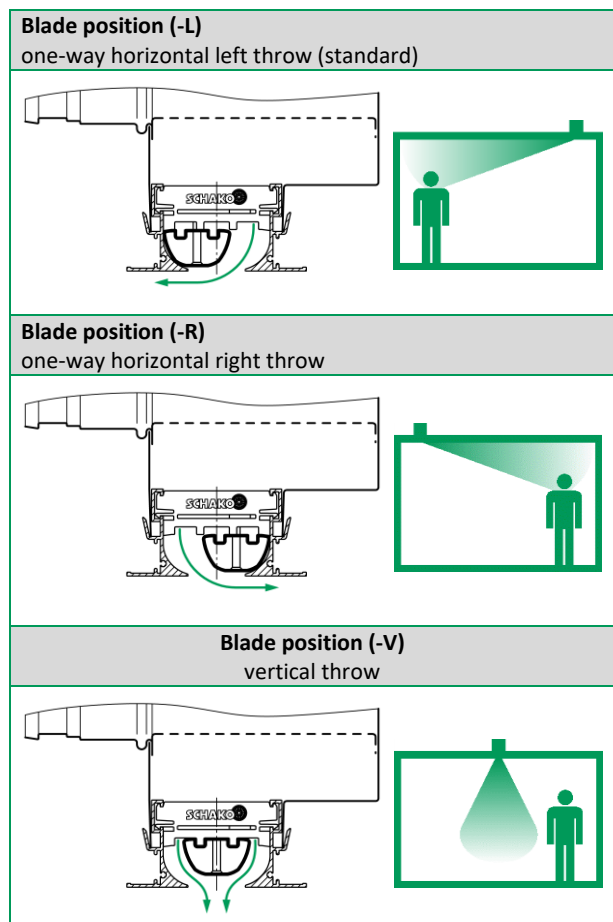
- 4 pieces, supplied loose.
- made of aluminium sheet.
- with band design for connection of:
 - Slot diffuser with slot diffuser
 - Slot diffuser with corner angle

QUICK SELECTION

V _{ZU}		Supply air (-Z)		Return air (-A)	
(m³/h)	[l/s]	Δp _t (Pa)	L _{WA} [dB(A)]	Δp _t (Pa)	L _{WA} [dB(A)]
200	56	17	27	12	<20
250	69	27	33	18	25
300	83	39	36	27	50
350	97	53	39	37	35
400	111	69	42	48	38
450	125	88	46	60	42

Values for length L = 1000 mm with plenum box.

BLADE POSITION FOR AIR JET



PROCESSING

Frame surface

- Extruded aluminium profile:
 - natural colour anodised (-ELOX) (standard).
 - painted to the colour RAL 9010 (white) (-9010).
 - painted to RAL colour 9011 (graphite black) (-9011).
 - painted to another RAL colour, freely selectable (-xxxx).
- Connecting pipe made of aluminium.

Blade colour

- for air throw return air **without blades with perforated plate**, made of painted sheet steel RAL 9011 (graphite black) (FQ = 46 %), as cover screen, fastened by means of rivets (-00000).
- for air throw **supply air with blades**, made of aluminium painted to RAL colour 9010 (white)
- for air throw **supply air with blades**, made of aluminium painted to RAL colour 9011 (graphite black) (standard)
- for air throw **supply air with blades**, made of aluminium painted to another RAL colour, freely selectable (always with 5 digits)

Connecting bridge

- Connecting bridges for the **blade holding device**:
 - **Supply air model**
 - made of plastic material, colour similar to RAL 9005 (black).
 - Number of connecting bridges:
2x up to length ≤1200 / **3x** starting from length >1200 to ≤1500
 - **Return air model**
 - made of galvanised sheet steel (fastened by means of rivets).
 - Number connecting bridges:
2x up to length <1000 / **3x** starting from length ≥1000 to ≤1500
- Connecting bridges for the **plenum box sealing**:
 - only for **models with supply and return air with end piece and plenum box**.
 - made of plastic material, colour similar to RAL 9005 (black).
 - Number of connecting bridges:
2x single design and band design respectively.

Detail Connecting bridge see page 14.

Sealing bridge

- Sealing bridge made of plastic material, colour similar to RAL 9005 (black), on the connecting bridges for plenum box sealing.
 - Seal, 1 mm thick.
 - only for band design (-B) and end pieces (-E...).

Detail Sealing bridge see page 14.

ACCESSORIES

End pieces (-E00 / -ES... / -EB... / -EL... / -ER...)

- Without end pieces (-E00).
- With end pieces (to obtain a visual impression of a continuous frame), with additional connecting bridge made of plastic material on the diffuser, mounted by means of two screws on the frame profile.
End piece models:
 - End piece, straight, made of galvanised sheet steel, painted to RAL colour of the frame profile:
 - Supplied loose (-ES1, pair) (standard).
 - Mounted ex works on both sides (-EB1).
 - Mounted ex works on the left side (-EL1).
 - Mounted ex works on the right side (-ER1).
 - Angle end piece, made of extruded aluminium profile, painted in the RAL colour of the frame profile.
 - Supplied loose (-ES2, pair) (standard).
 - Mounted ex works on both sides (-EB2).
 - Mounted ex works on the left side (-EL2).
 - Mounted ex works on the right side (-ER2).

Dummy piece (-BS0 / -BS1)

- without dummy piece (-BS0) (standard).
- with dummy piece (-BS1):
 - made of sheet steel painted to RAL colour 9011 (graphite black).
 - possible starting from length L = 200 mm.
 - only possible without plenum box.
 - Mounting only possible with counter pole brace (-GT) or clamp strap (-KB).

Plenum box (-ASK-28)

Plenum box for DSCXLS (-28), model (number of slots) 1-slot (-1).

- Single / band design:
 - Single design (-N, length of box max. 1500 mm)
 - Band design (-B, available lengths according to SCHAKO standard for band design).
- Length:
 - 1000 mm (-01000)
 - 1500 mm (-01500)
 - Length in mm, freely selectable (-xxxx, always with 5 digits) (length min. 400 mm / max. 1500 mm).
- Mounting of box:
 - Permanent connection (-FV) (standard).
 - Concealed mounting (-VM).
- Material:
 - Galvanised sheet steel (-SV) (standard).
- Damper:
 - without damper (-DK0) (standard).
 - with damper and cable-operated adjustment (-DK2), made of galvanised perforated plate (FQ = 36 %), in the connection spigot, adjustable, for simple air volume regulation.
- Rubber lip seal:
 - without rubber lip seal (-GD0) (standard).
 - with rubber lip seal (-GD1) made of special rubber, at the connection spigot.
- Insulation:
 - without insulation (-I0) (standard).
 - with internal insulation (-Ii), thermal insulation inside the plenum box.
 - with external insulation (-Ia), thermal insulation at the outside of the plenum box.

- Height of plenum box:
 - Standard height of plenum box (-KHS)
 - Height of plenum box in mm, freely selectable (-xxx) (minimum height [KHS] = spigot diameter + 82 mm, always with 3 digits)
- Box neck extension:
 - Standard box neck (-KVS)
 - Box neck extension in mm, freely selectable (-xxx) (possible from >45 mm to 200 mm).
- Spigot position:
 - Spigot from above (-S0).
 - Lateral spigot (-S1) (standard).
 - Lateral spigot located on the opposite side (-S2).
- Spigot diameter:
 - Standard spigot diameter (-SDS).
 - Spigot diameter in mm, freely selectable (-xxx, always with 3 digits).
- Suspension:
 - without riveting nut (-E0) (standard).
 - With riveting nut (-EM), made of brass.
- with air diffuser plate (FQ = 46 %), made of galvanised sheet steel, for even distribution of the air flow (to stabilise the pressure in the plenum box).

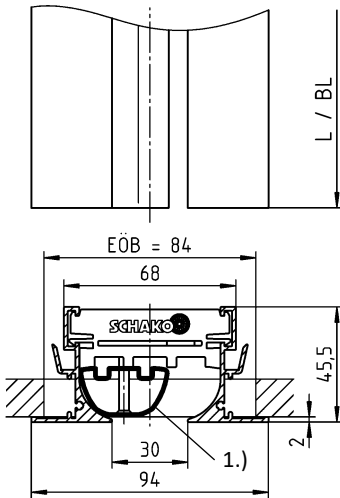
Corner angle (-EW-28)

Corner angle for DSCXLS (-28), model (number of slots) 1-slot (-1) with slot width 30 mm, with standard frame profile (-R0, with support profile, for visible installation on the ceiling).

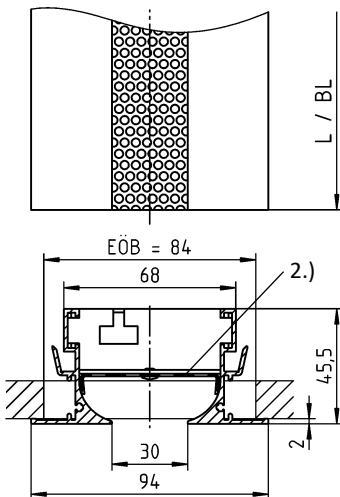
- frame surface, made of extruded aluminium profile:
 - natural colour anodised (-ELOX, standard).
 - painted to the colour RAL 9010 (white) (-9010).
 - painted to RAL colour 9011 (graphite black) (-9011).
 - painted to another RAL colour, freely selectable (at an extra charge) (-xxxx).
- Connecting bridge made of galvanised sheet steel, fastened by means of rivets.
- Colour of cover plate:
 - Sheet steel painted to RAL colour 9005 (black) (-B9005) (standard).
 - Sheet steel painted to RAL colour 9010 (white) (-B9010).
 - Sheet steel painted to another RAL colour, freely selectable (Bxxxx).
- Angle between sides:
 - 90° (-090) (standard).
 - Angle as required (-xxx), values between $\alpha = 90^\circ$ (-090, standard) and 170° (-170) are possible.
- Left-side length (a):
 - Standard length L = 250 mm (-000)
 - Length can be freely selected (-xxx) (minimum length = standard length)
- Right-side length (b):
 - Standard length L = 250 mm (-000)
 - Length can be freely selected (-xxx) (minimum length = standard length)
- Including 4 fishplates (-VL, included in delivery) made of aluminium (same colour as frame), supplied loose.
- Mounting:
 - with counter pole brace (-GT), screws and pole brace traps are supplied loose (2 pieces).
 - with clamp strap (-KB), screws and clamp straps are supplied loose (2 pieces).
 - with suspension lugs (-AL), supplied loose and not folded, 4 pieces.

DIMENSIONS

DSCXLS-1-Z (supply air, 1-slot)



DSCXLS-1-A (return air, 1-slot)

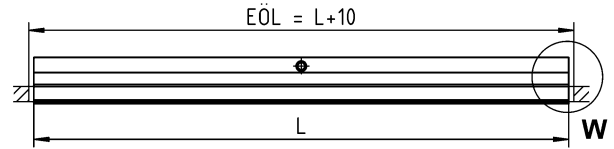


- 1.) Air deflection blade
- 2.) Perforated plate

Available lengths for the slot diffuser

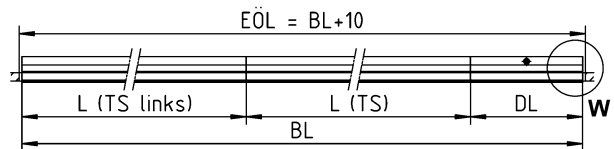
SINGLE DESIGN (-N)

- Length L= 1000 mm (-01000-N)
- Length L= 1500 mm (-01500-N)
- Length in mm, can be freely selected (-xxxxx-N)
(Length L ≥ 400 mm to ≤ 1500 mm can be fitted with plenum box, dummy piece possible from length 200 mm)



BAND DESIGN (-B)

- Length in mm, can be freely selected, as band (-xxxxx-B)
(Available lengths according to SCHAKO standard)



Available lengths according to SCHAKO standard:

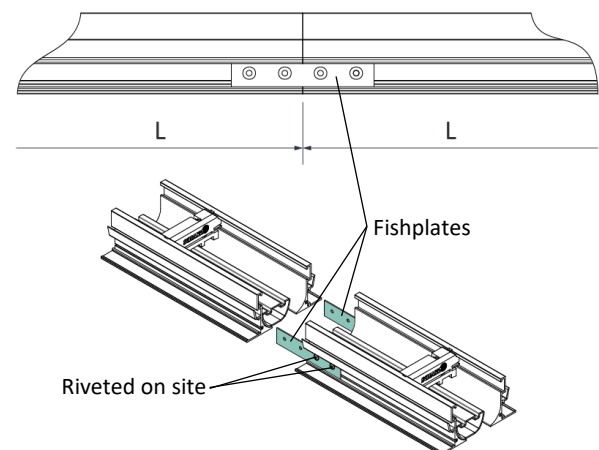
If the slot diffuser type DSCXLS is designed as a band, the total length BL is assembled from lengths (sections) of **1000 mm or 1500 mm**. The difference pieces DL are supplied in lengths **≥ 400 mm to < 1500 mm**. The difference pieces **from ≥ 200 mm to < 400 mm** are supplied as dummy pieces without plenum box.

Slot diffuser connection in band design

Slot diffuser - slot diffuser

With fishplates:

Supplied loose (2x for each connection)



Slot diffuser connection - corner angle see page 14.
For detail W, see page 13.

- EÖB = installation opening width
- EÖL = Installation opening length (L+10/BL+10))
- DL = difference in length
- TS = section
- Left TS = left section
- L = length
- BL = band length

DIMENSIONS OF ACCESSORIES

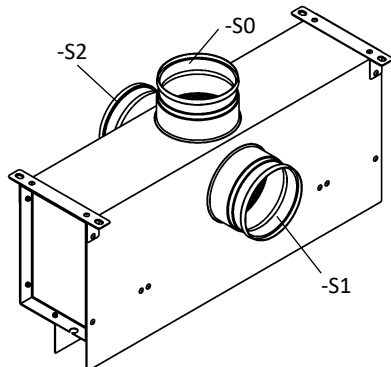
Plenum box (-ASK-28)

Spigot position

S0 = spigot from above

S1 = Lateral spigot (standard)

S2 = Lateral spigot on the opposite side.



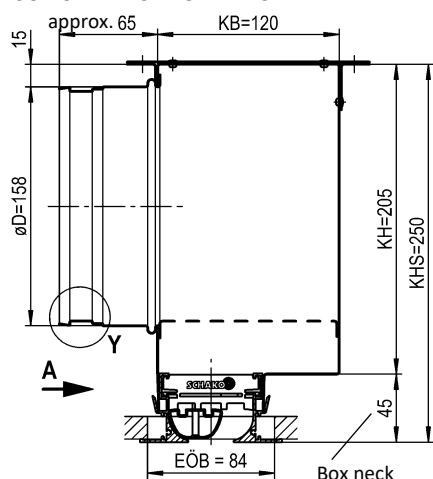
Plenum box (-ASK-28-...-FV-...)

With fixed connection. With lateral spigot.

The slot diffuser is permanently connected to the plenum box.

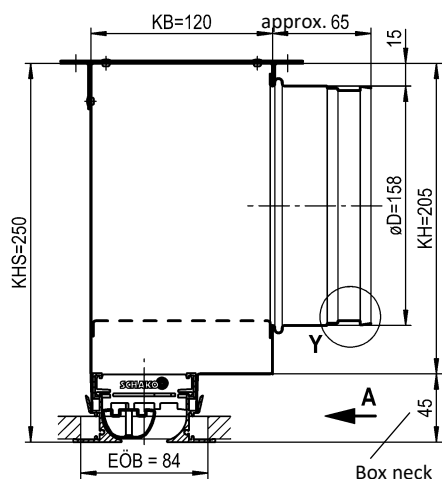
With lateral spigot (-S1, standard)

DSCXLS-1-...-ASK-28-...-FV-S1



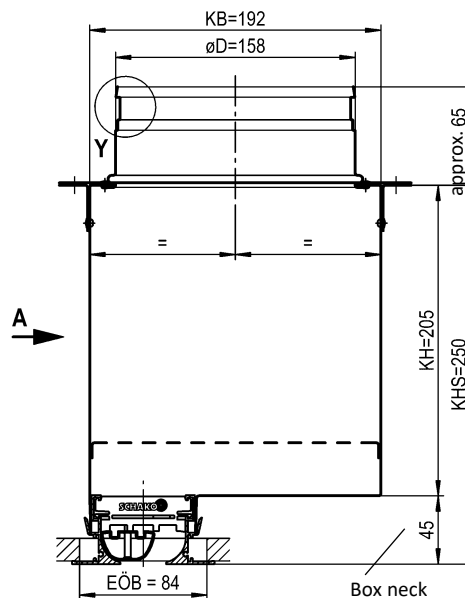
With lateral spigot located on the opposite side (-S2)

DSCXLS-1-...-ASK-28-...-FV-S2



With spigot from above (-S0)

DSCXLS-1-...-ASK-28-...-FV-S0



Number of connection spigots

øD		
L ≥ 400 to L ≤ 500	L > 500 to L ≤ 1000	L > 1000 to L ≤ 1500
1 x ø158	2 x ø158	3 x ø158

Plenum box height reduction (at an extra charge)

- with spigot position -S1 / -S2:

For the spigot ø158, the height of plenum box KHS can be reduced to 240 mm.

Minimum height [KHS] = spigot diameter + 82 mm

- With spigot position -S0:

The height of plenum box KHS can be reduced to 200 mm.

Box neck extension

- Box neck standard (-KVS) 45 mm.

- Box neck extension in mm, freely selectable (-xxx, always with 3 digits, available from >45 mm to 200 mm).

Spigot diameter:

- Spigot diameter standard (-SDS) øD = 158 mm.

- Spigot diameter in mm, freely selectable (-xxx, always with 3 digits).

For the available lengths view A, see page 9 + 10.

For rubber lip seal, detail Y, see page 11.

For fastening methods, see page 14 + 15.

For the assembly overview, see page 16.

EÖB = installation opening width

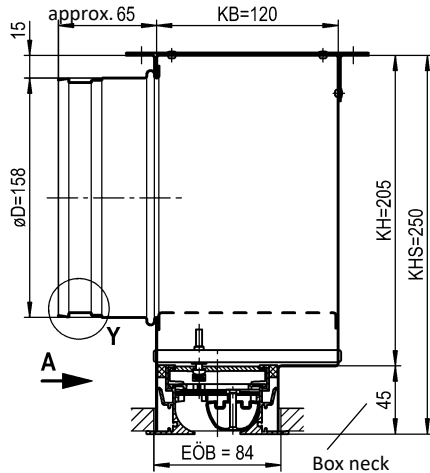
Plenum box (-ASK-28-...-VM-...)

With concealed mounting.

The slot diffuser is screwed to the pole brace in the plenum box housing with concealed screws. Frame with foam gasket. Plenum box mounted ex works.

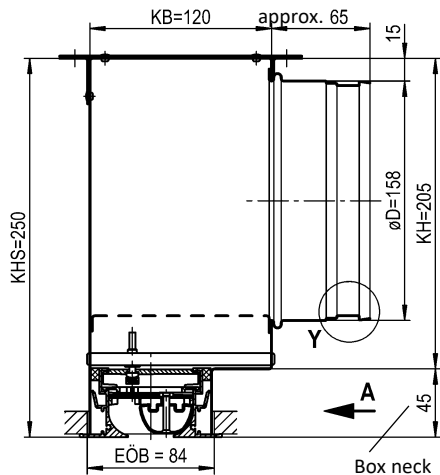
With lateral spigot (-S1, standard)

DSCXLS-1-...-ASK-28-...-VM-S1



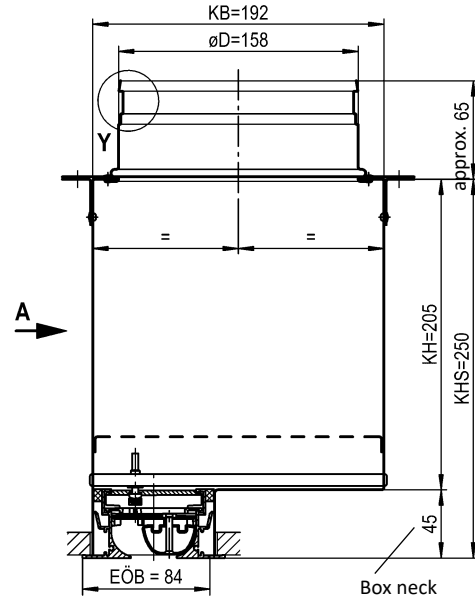
With lateral spigot located on the opposite side (-S2)

DSCXLS-1-...-ASK-28-...-VM-S2



With spigot from above (-S0)

DSCXLS-1-...-ASK-28-...-VM-S0



Number of connection spigots

øD		
L ≥ 400 to L ≤ 500	L > 500 to L ≤ 1000	L > 1000 to L ≤ 1500
1 x ø158	2 x ø158	3 x ø158

Plenum box height reduction (at an extra charge)

- with spigot position -S1 / -S2:
For the spigot ø158, the height of plenum box KHS can be reduced to 240 mm.
Minimum height [KHS] = spigot diameter + 82 mm
- With spigot position -S0:
The height of plenum box KHS can be reduced to 200 mm.

Box neck extension

- Box neck standard (-KVS) 45 mm.
- Box neck extension in mm, freely selectable (-xxx, always with 3 digits, available from >45 mm to 200 mm).

Spigot diameter:

- Spigot diameter standard (-SDS) øD = 158 mm.
- Spigot diameter in mm, freely selectable (-xxx, always with 3 digits).

Attention: The max. torque of the fastening screw is 0.5 Nm.

For the available lengths view A, see page 9 + 10.

For rubber lip seal, detail Y, see page 11.

For fastening methods, see page 14 + 15.

For the assembly overview, see page 16.

EÖB = installation opening width

Available lengths plenum box (-ASK-28-...)

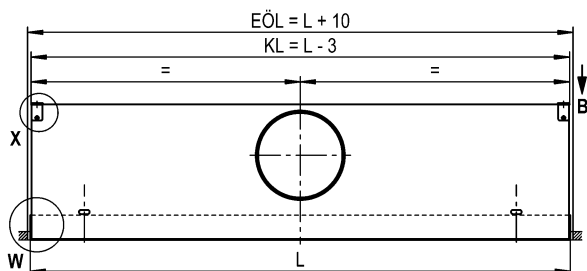
For permanent connection (-FV) and concealed mounting (-VM).

SINGLE DESIGN (-N)

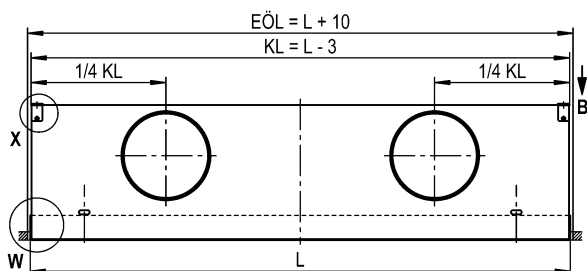
- Length L= 1000 mm (-01000-N)
- Length L= 1500 mm (-01500-N)
- Length in mm, can be freely selected (-xxxx-N)
(length plenum box ≥ 400 mm to ≤ 1500 mm)

Lateral spigot position (-S1) / lateral on the opposite side (-S2):

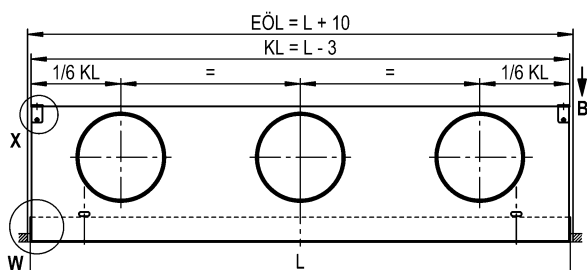
View A / with 1 spigot (view of concealed mounting)



View A / with 2 spigots (view of concealed mounting)



View A / with 3 spigots (view of concealed mounting)



Number of connection spigots

$\varnothing D$		
$L \geq 400$ to $L \leq 500$	$L > 500$ to $L \leq 1000$	$L > 1000$ to $L \leq 1500$
1 x $\varnothing 158$	2 x $\varnothing 158$	3 x $\varnothing 158$

Available sizes

L	EÖL	KL	Weight (kg)
1000	1010	997	approx. 6.0*
1500	1510	1497	approx. 9.0*

*Air diffuser + plenum box

Model with end pieces, for detail W see page 13.

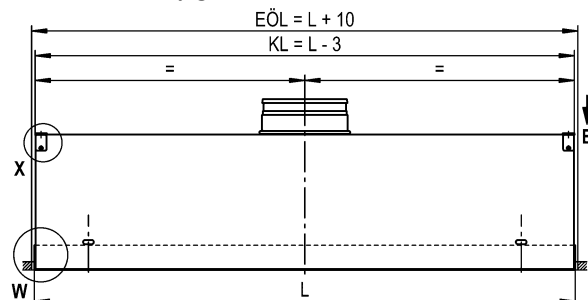
For fastening methods, see page 14 + 15.

For the assembly overview, see page 16.

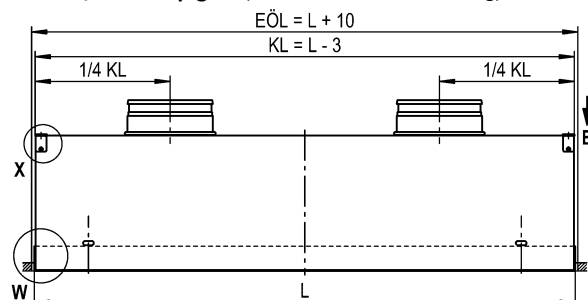
For plenum box mounting, detail X, see page 11.

Spigot position from above (-S0):

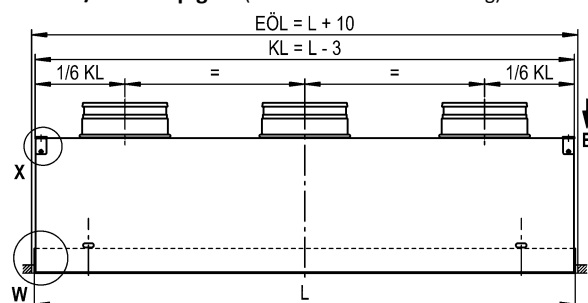
View A / with 1 spigot (view of concealed mounting)



View A / with 2 spigots (view of concealed mounting)

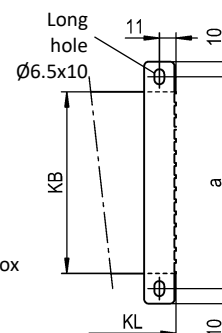


View A / with 3 spigots (view of concealed mounting)



Spigot position	KB	a
DSCXLS-...-S0-...	192	212
DSCXLS-...-S1-...	120	140
DSCXLS-...-S2-...	120	140

View B



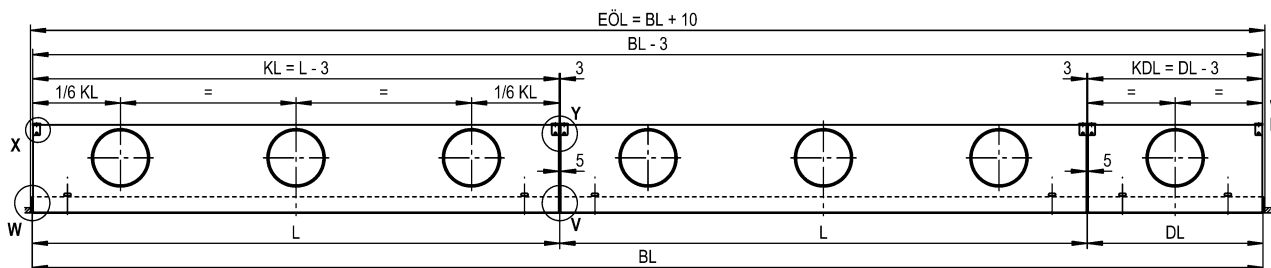
- L = length
- DL = difference in length
- BL = band length
- KL = length of plenum box
- KDL = difference in length, plenum box
- EÖL = installation opening length
- EÖB = installation opening width

BAND DESIGN (-B)

- Length in mm, can be freely selected, as band (-xxxx-B)
(Available lengths according to SCHAKO standard)

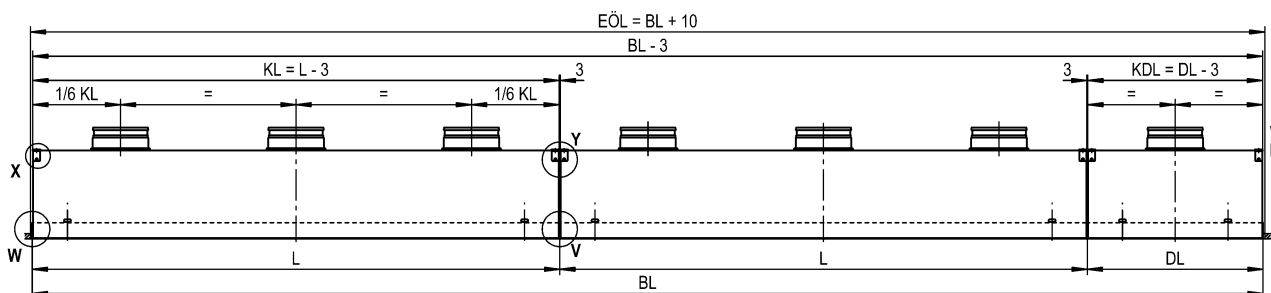
Lateral spigot position (-S1) / lateral on the opposite side (-S2):

View A (view of concealed mounting)



Spigot position from above (-S0):

View A (view of concealed mounting)



Number of connection spigots

$\varnothing D$		
$L \geq 400$ to $L \leq 500$ $DL \geq 400$ to $DL \leq 500$	$L > 500$ to $L \leq 1000$ $DL > 500$ to $DL \leq 1000$	$L > 1000$ to $L \leq 1500$ $DL > 1000$ to $DL \leq 1500$
1 x $\varnothing 158$	2 x $\varnothing 158$	3 x $\varnothing 158$

Installation opening in the length section: $EÖL = BL + 10$

Available lengths according to SCHAKO standard (BL > 2000):

When the slot diffuser type DSCXLS is designed as a band (BL > 2000 mm), the total length BL is assembled from standard lengths (sections) of **1500 mm**. The difference pieces DL with length **<1500 mm to ≥ 400 mm** can be fitted with a plenum box.

The difference pieces **from <400 mm to ≥ 200 mm** are supplied as dummy pieces without plenum box.

A different band division is possible after consultation and when required by the customer.

Model with end pieces, for detail W see page 13.

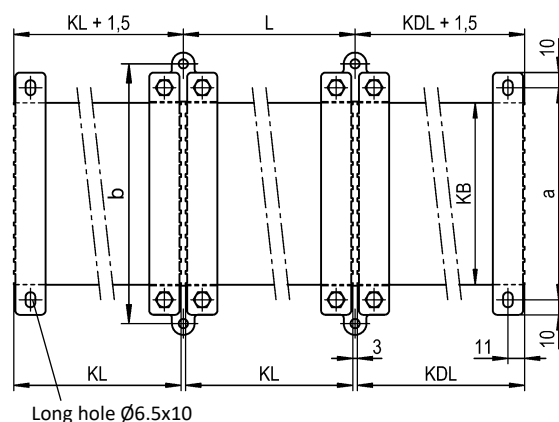
For fastening methods, see page 14 + 15.

For the assembly overview, see page 16.

For plenum box mounting, detail X, see page 11.

L	=	length
DL	=	difference in length
BL	=	band length
KL	=	length of plenum box
KDL	=	difference in length, plenum box
EÖL	=	installation opening length
EÖB	=	installation opening width

View B

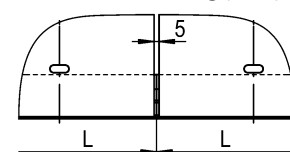
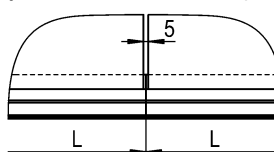


Spigot position	KB	a	b
DSCXLS-...-S0-...	192	212	244
DSCXLS-...-S1-...	120	140	172
DSCXLS-...-S2-...	120	140	172

Detail V

Seal butt joint for permanent connection (-FV)

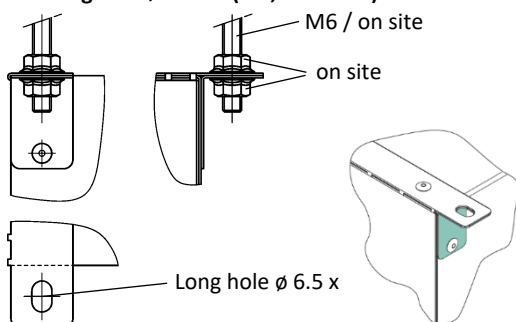
Seal butt joint for concealed mounting (-VM)



Plenum box mounting:

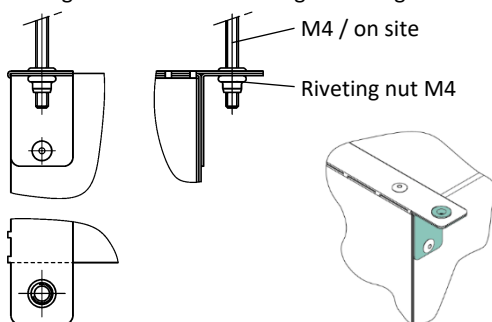
Detail X

with long hole $\varnothing 6.5 \times 10$ (-E0, standard):



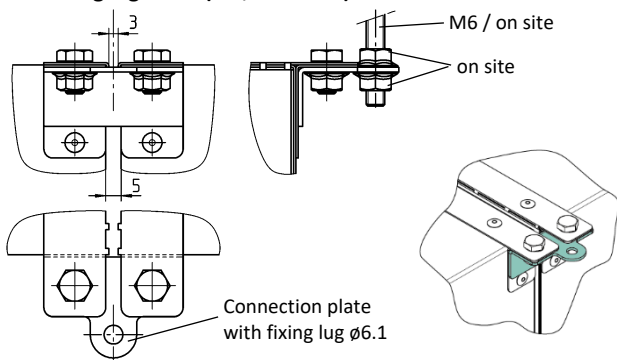
with riveting nut M4 (-EM, at an extra charge):

At an extra charge, the plenum boxes can be fitted with M4 riveting nuts to facilitate ceiling mounting.



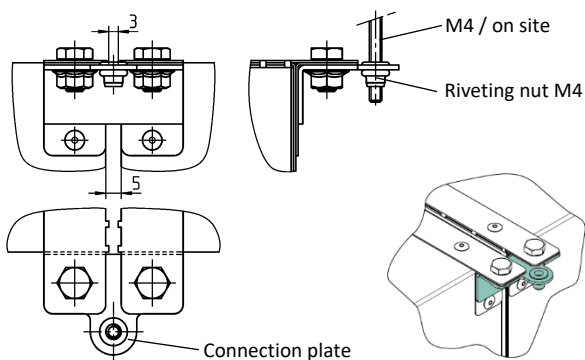
Detail Y

with fixing lugs $\varnothing 6.1$ (-E0, standard):



with riveting nut M4 (-EM, at an extra charge):

At an extra charge, the plenum boxes can be fitted with M4 riveting nuts to facilitate ceiling mounting.



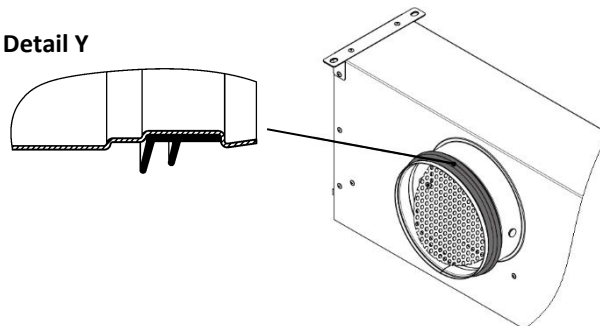
Rubber lip seal (-GD0 / -GD1), for ASK

Models:

- without rubber lip seal (-GD0) (standard).
- with rubber lip seal (-GD1).

with rubber lip seal (-GD1)

Detail Y



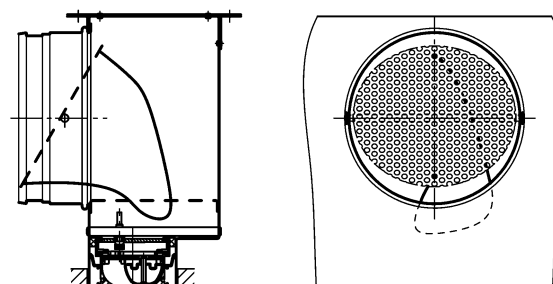
Damper (-DK0 / -DK2), for ASK

Models:

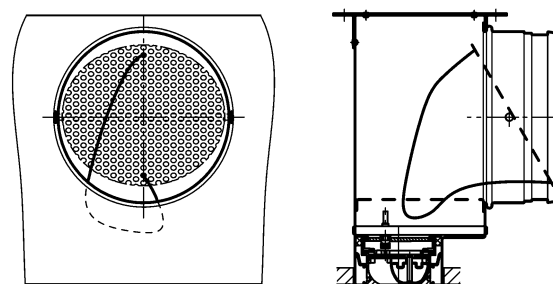
- without damper (-DK0) (standard).
- with damper and cable-operated adjustment (-DK2).

with damper and cable-operated adjustment (-DK2)

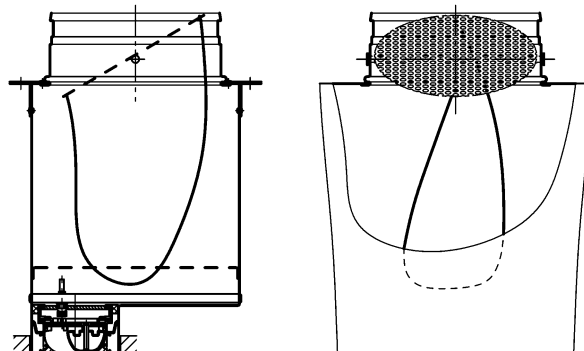
-DK2, lateral connection (-S1, standard)



-DK2, lateral connection located on the opposite side (-S2)



-DK2, connection from above (-S0)

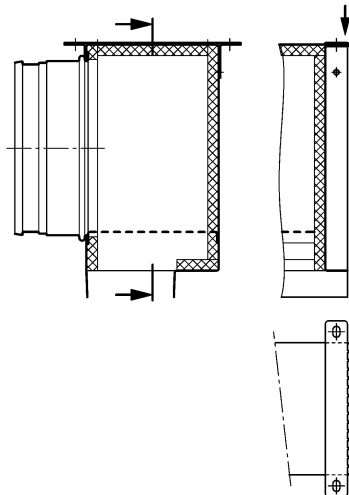


Insulation (-I0 / -Ii / -Ia), for ASK

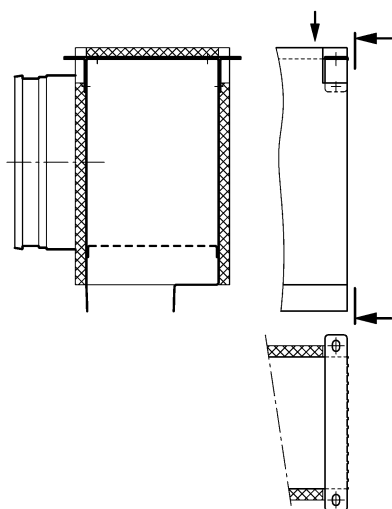
Models:

- without insulation (-I0) (standard).
- with internal insulation (-Ii).
- with external insulation (-Ia).

with internal insulation (-Ii)



with external insulation (-Ia)



Dummy piece (-BS0 / -BS1)

Models:

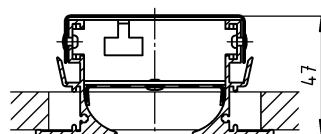
- without dummy piece (-BS0) (standard).
- with dummy piece (-BS1):
 - only possible without plenum box.
 - possible starting from length L = 200 mm.
 - Mounting only possible with counter pole brace (-GT) or clamp strap (-KB).

with dummy piece (-BS1)

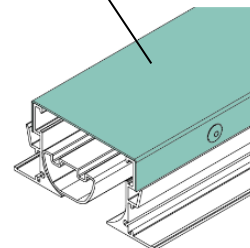
for supply air: DSCXLS-1-Z



for return air: DSCXLS-1-A



Dummy piece



For available lengths of slot diffuser, see page 9 + 10.

End pieces (-E00 / -E...1 / -E...2)

To give the impression of a continuous frame, lateral front end pieces can be fitted.

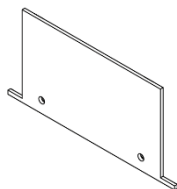
Models:

- E00 = without end piece (standard).
- ES1 = with straight end piece, supplied loose (pair).
- EB1 = with straight end piece, mounted ex works on both sides.
- EL1 = with straight end piece, mounted ex works on the left side.
- ER1 = with straight end piece, mounted ex works on the right side.
- ES2 = with angle end piece, supplied loose (pair).
- EB2 = with angle end piece, mounted ex works on both sides.
- EL2 = with angle end piece, mounted ex works on the left.
- ER2 = with angle end piece, mounted ex works on the right side.

In the band design, the end piece is mounted to the left side of the section and to the right side of the difference length as a standard.

End piece, straight (-E...1):

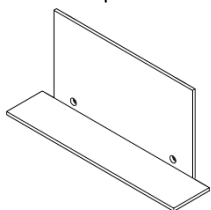
made of galvanised sheet steel, painted in RAL colour of the



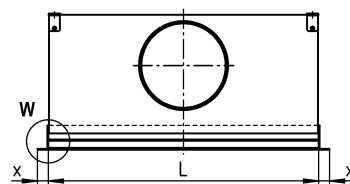
frame profile.

Angle end piece (-E...2):

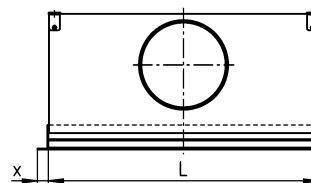
made of extruded aluminium profile painted to RAL colour of the frame profile.



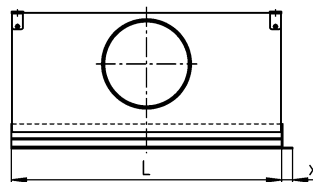
End piece on both sides



End piece on the left

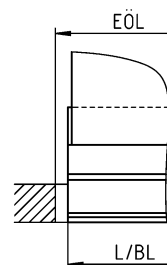


End piece on the right

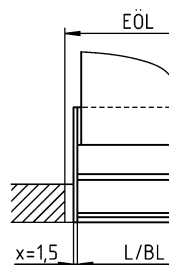


Detail W

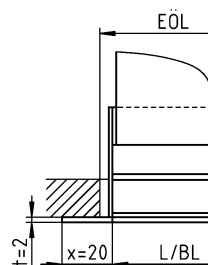
Without end pieces (-E00)



Straight end piece (-E...1)



Angle end piece (-E...2)



Installation opening in the length section:

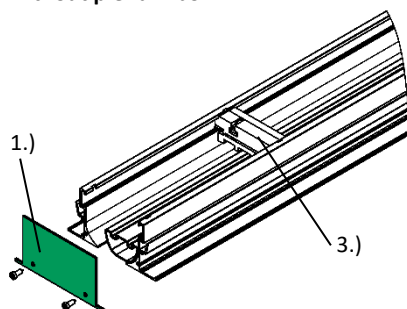
$$EÖL = L+10 \text{ or } BL+10$$

EÖL = installation opening length

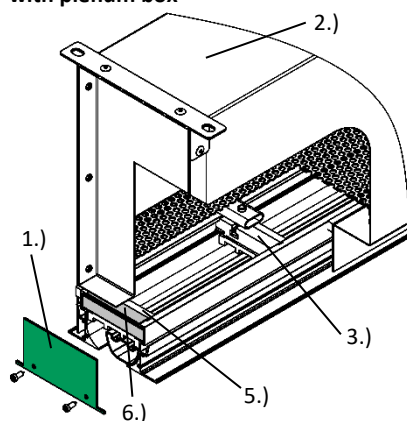
MOUNTING END PIECE:

DSCXLS-1-Z-... (supply air)

- without plenum box

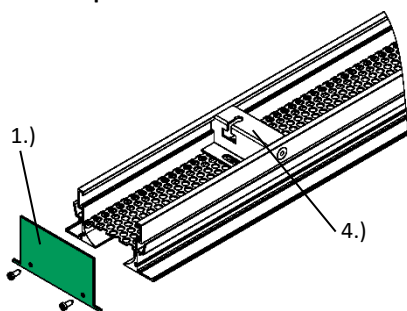


- with plenum box

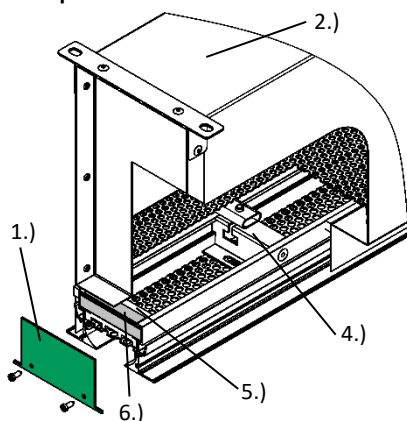


DSCXLS-1-A-... (return air)

- without plenum box



- with plenum box



- 1.) End piece
- 2.) Plenum box
- 3.) Connecting bridges for the blade holding device made of plastic material, colour similar to RAL 9005 (black).
Number of connecting bridges:
2x up to length ≤ 1200 / 3x starting from length > 1200 to ≤ 1500
- 4.) Connecting bridges for the blade holding device made of galvanised sheet steel.
Number connecting bridges:
2x up to length < 1000 / 3x starting from length ≥ 1000 to ≤ 1500
- 5.) Connecting bridges for plenum box sealing made of plastic material, colour similar to RAL 9005 (black).
Number of connecting bridges:
2x single design and band design respectively.
- 6.) Sealing bridge

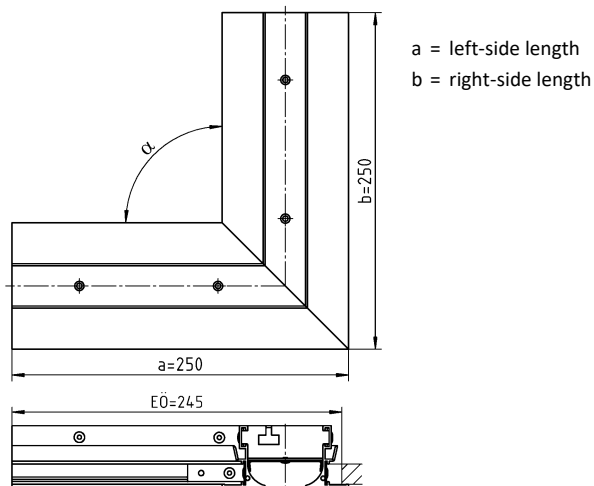
Corner angle 90° (-EW-28-...-090-...)

Corner angles can only be produced as dummy pieces, i.e., without a plenum box.

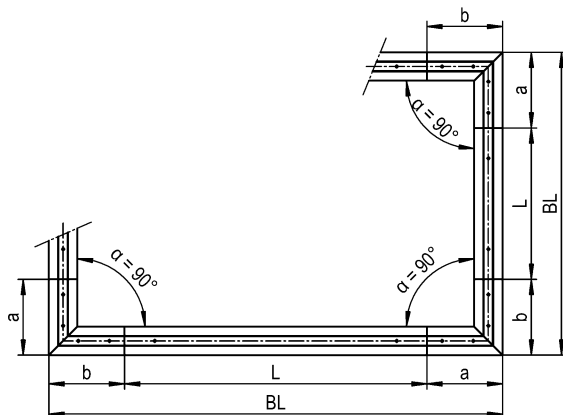
Mounting of the corner angles is performed using the counter pole brace (-GT), clamp straps (-KB) or suspension lugs (-AL). For the assembly overview, see page 16.

The standard angle has a 90° (α) angle and has a side length on the left (a) L=250 (-000) / right (b) L=250 (-000). Other side lengths (a / b) are available upon request (minimum length = standard length).

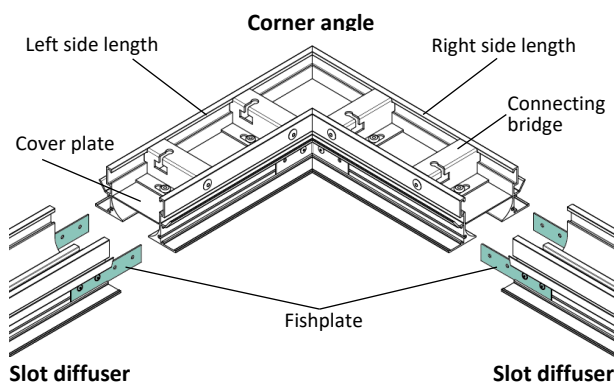
Angle value α as required between 90° (-090, standard) and 170° (-170) is possible.



Installation detail, corner angle in band design



The connection between the diffuser and corner angle is performed by means of fishplates. 4 fishplates are included in delivery (2 for each connection). They are supplied loose.



Construction subject to change
No return possible

FASTENING METHODS

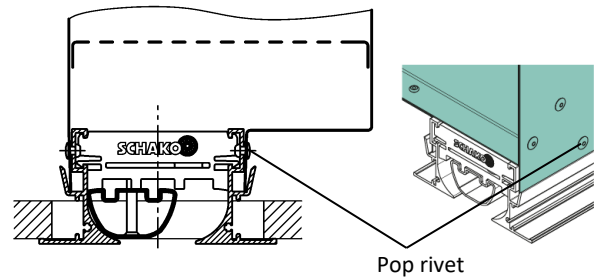
With plenum box

Only for return and supply air model.

Permanent connection (-FV)

The slot diffuser is permanently connected to the plenum box.

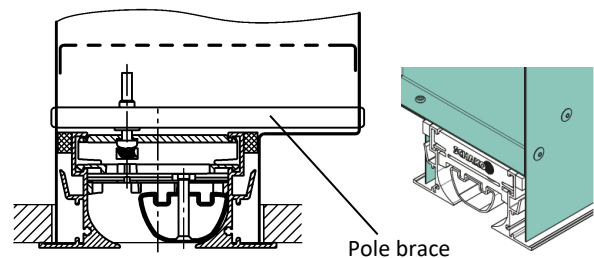
(see page 7)



Concealed mounting (-VM)

The slot diffuser is screwed to the pole brace in the plenum box housing with concealed screws. Frame with foam gasket. Plenum box mounted ex works.

(see page 8)



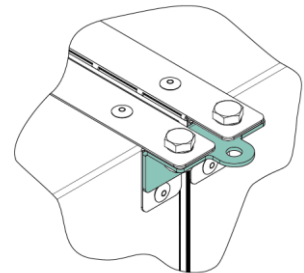
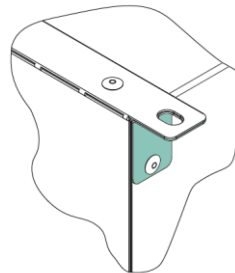
PLENUM BOX MOUNTING

(see page 11)

Without riveting nut (-E0):

Single design (-N)

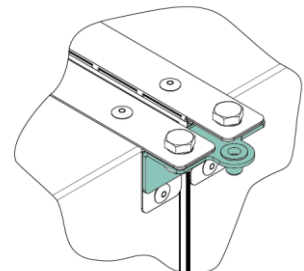
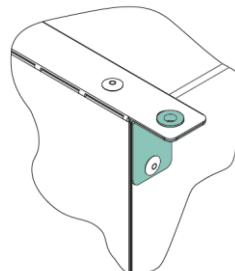
Band design (-B)



With riveting nuts (-EM):

Single design (-N)

Band design (-B)



Without plenum box

Mounting with counter pole brace (-GT)

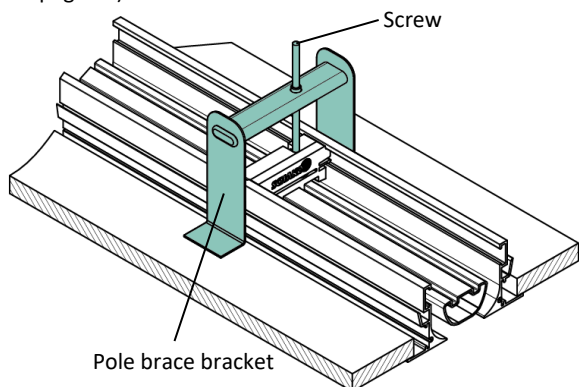
Only possible without plenum box.

Screws and pole brace traps are supplied loose (2 pieces).

The slot diffuser is screwed to the counter pole brace (pole brace strap) with concealed screws (included in delivery).

For mounting, access on the rear is required!

(see page 16)



Mounting with clamp strap (-KB)

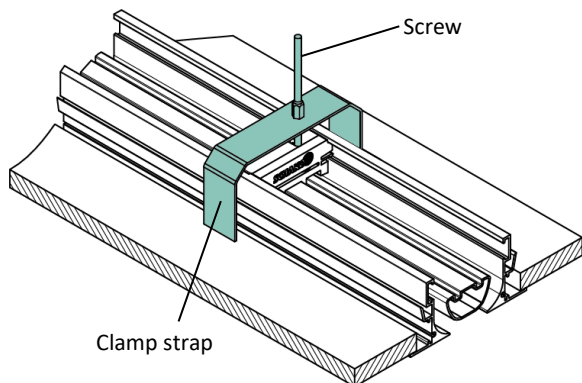
Only possible without plenum box.

Screws and clamp straps are supplied loose (2 pieces).

The slot diffuser is screwed to the clamp strap with concealed screws (included in delivery).

For mounting, access on the rear is not required!

(see page 16)

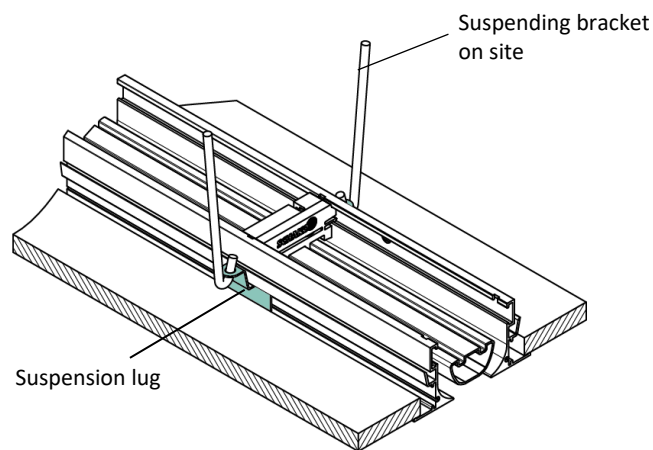


Mounting with suspension lug (-AL)

Only possible without plenum box.

4 pieces, supplied loose and not folded.

The slot diffuser is fastened to 4 suspension brackets (see page 16)



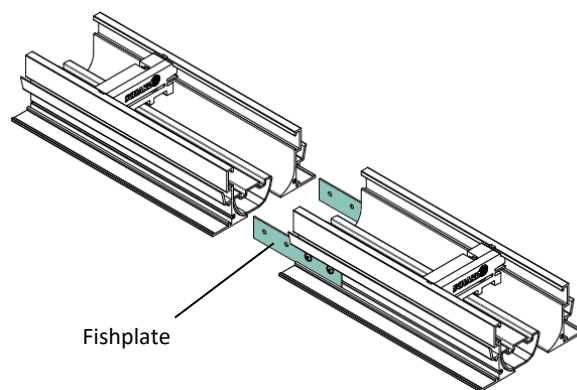
Fishplate (-VL)

4 pieces, supplied loose.

With band design for connection of (x2 per butt joint):

- Slot diffuser with slot diffuser.
- Slot diffuser with corner angle.

(see page 6 + 14)



ASSEMBLYOVERVIEW

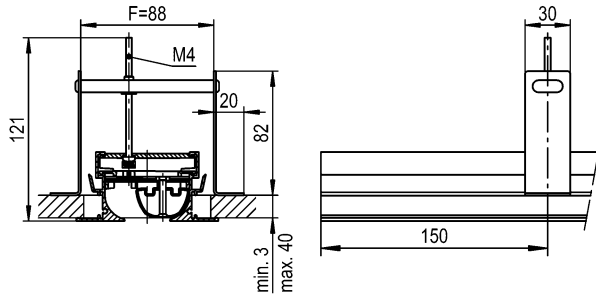
MOUNTING WITH COUNTER POLE BRACE (-GT)

Only possible without plenum box.

Screws and counter pole brace are supplied loose.

The slot diffuser is screwed to the counter pole brace (pole brace strap) with concealed screws (included in delivery).

For mounting, access on the rear is required!



Mounting instructions Counter pole brace

Insert the screw into the slot of the connecting bridge.

Insert the slot diffuser with the screw into the ceiling and screw it to the counter pole brace which has been positioned on the ceiling against the longitudinal direction; the slot diffuser must be screwed tight to the ceiling so that it is firmly locked on it.

Attention: The max. torque of the fastening screw is 0.5 Nm

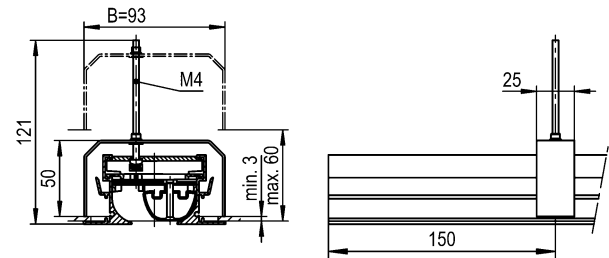
MOUNTING WITH CLAMP STRAP (-KB)

Only possible without plenum box.

Screws and clamp straps are supplied loose.

The slot diffuser is screwed to the clamp strap with concealed screws (included in delivery).

For mounting, access on the rear is not required!



Mounting instructions for clamp strap

Insert the screw into the slot of the connecting bridge and screw it to the clamp straps. To insert the clamp straps into the ceiling, position them in the longitudinal direction. Insert the diffuser and clamp strap into the ceiling. Then pivot the clamp strap by about 90° by rotating the screw and lower it over the slot diffuser profile. Tighten the screw until the slot diffuser is firmly locked at the ceiling.

Attention: The max. torque of the fastening screw is 0.5 Nm

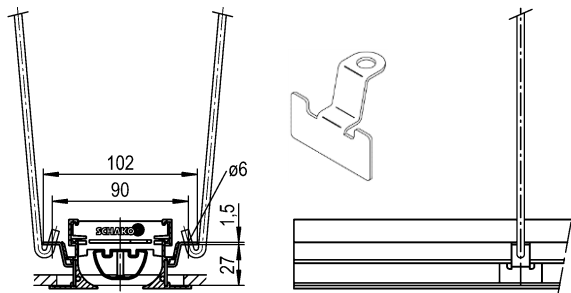
MOUNTING WITH SUSPENSION LUG (-AL)

Only possible without plenum box.

4 pieces, supplied loose and not folded.

The slot diffuser is fastened to 4 suspension brackets

Suspension lug with holes $\varnothing 6$ for hook mounting.



Mounting instructions Suspension lug

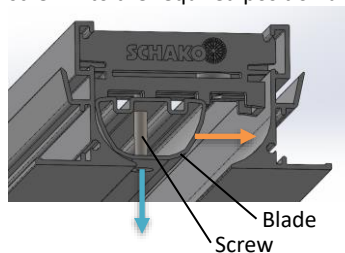
Bend the suspension lugs at the markings (e.g. by means of pliers) in such a way that they fit the profile and the available space. Insert the suspension lugs into the slot of the diffuser and position them close to the ends (two lugs per side). Insert the fastening hooks into the holes $\varnothing 6$ mm of the suspension lugs. Level the diffuser using the clamping system (on site).

NOTE

It is necessary to install the diffuser before the ceiling (e.g. technical ceilings) or make sure that there is access to it from above.

ADJUSTING THE BLADE POSITION

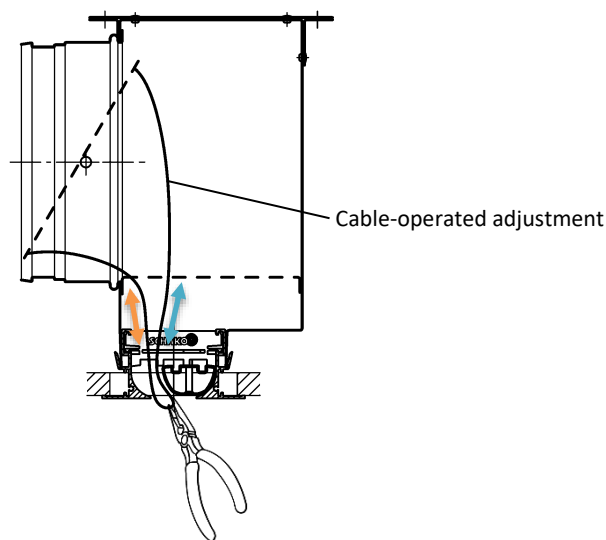
Loosen the screw [1] from below such that it can be moved. It is not necessary to remove the screws completely. Move the screw into the required position and screw it tightly again.



REGULATION OF THE DAMPER

The damper is adjusted by means of a cable. It is located behind the slot diffuser inside the plenum box. The cable is adjusted manually from below through the slot (possibly by means of a tool, such as a screwdriver or pliers). Pulling the cable to any side (changing of the angle for the damper) allows to adjust the required volumetric flow.

It is often no longer possible to perform volumetric flow measurement at the connection spigot in the ceiling cavity. The pressure measurement box is available for such cases (must be ordered separately). The pressure measurement box is connected to a suitable measurement instrument such as an inclined tube pressure gauge. The box is then pressed to the measurement points of the diffuser and the pressure measured at the gauge.



NOTE

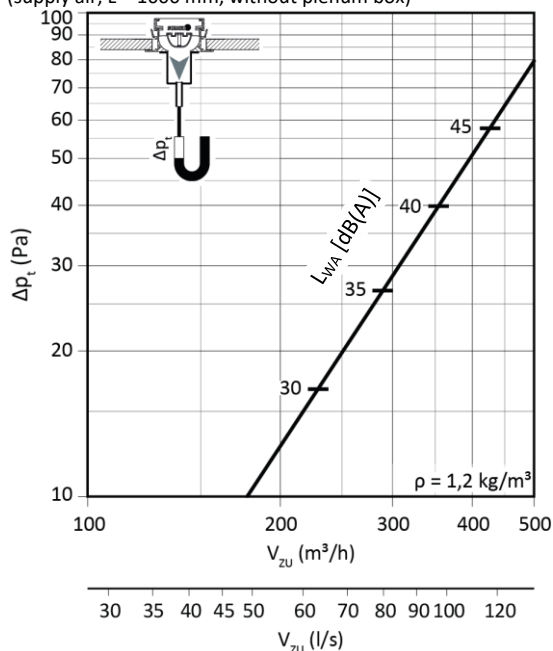
For adjustment and visual check of the damper position it may be useful to position the blades on the opposite side of the spigot.

TECHNICAL DATA

Pressure loss and noise level

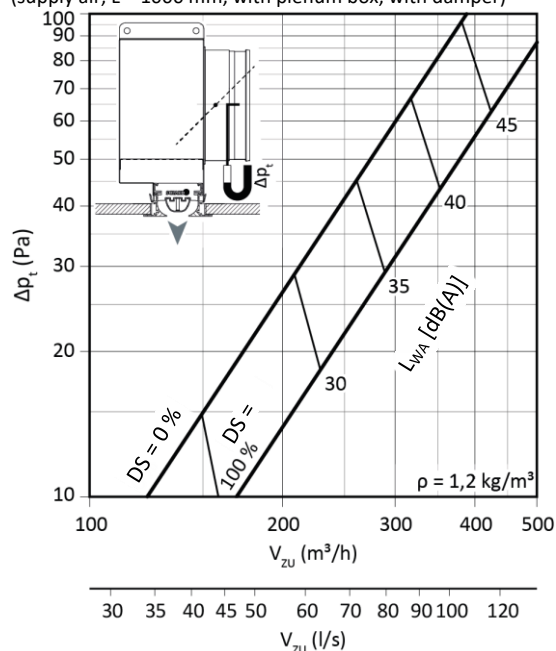
DSCXLS-Z-1-...-01000-...

(supply air, L = 1000 mm, without plenum box)



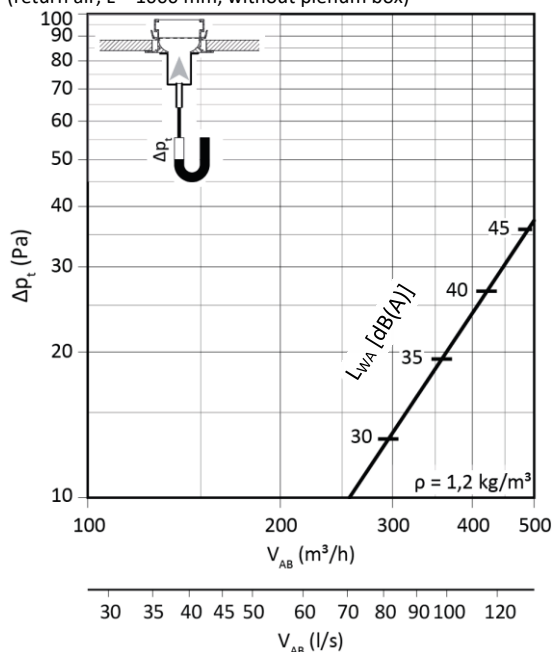
DSCXLS-Z-1-...-01000-...-ASK-28-...-DK2

(supply air, L = 1000 mm, with plenum box, with damper)



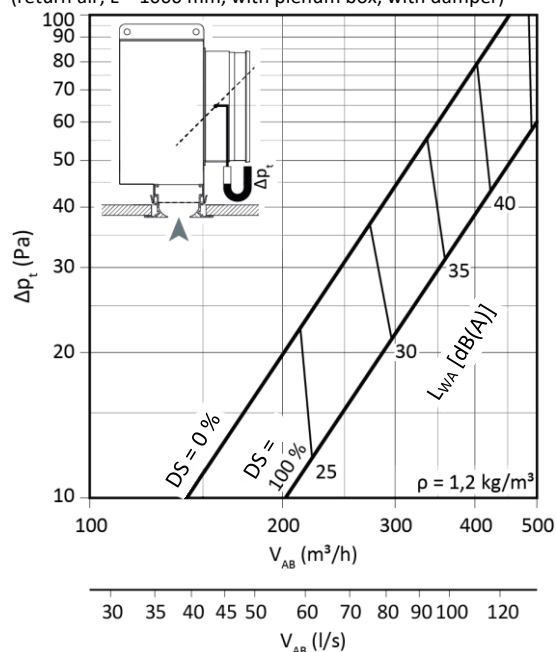
DSCXLS-A-1-...-01000-...

(return air, L = 1000 mm, without plenum box)



DSCXLS-A-1-...-01000-...-ASK-28-...-DK2

(return air, L = 1000 mm, with plenum box, with damper)



Damper position (DS):

OPEN = 100%

CLOSED = 0%

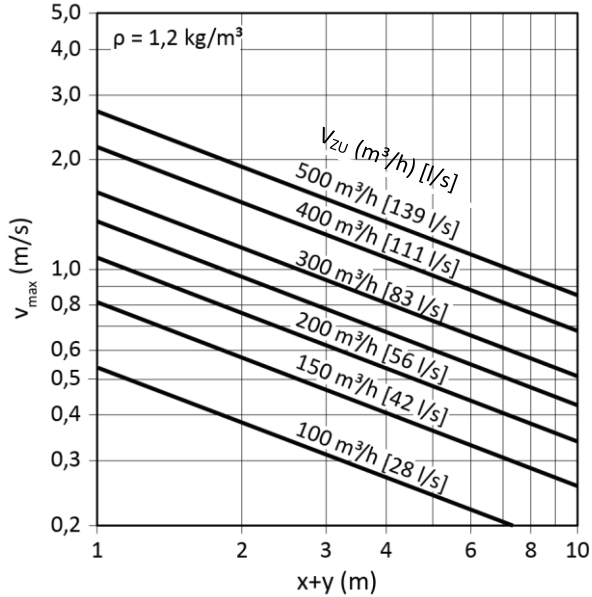
Octave band sound power level

L_{WA} [dB(A)]	f_m (Hz)							
	63	125	250	500	1k	2k	4k	8k
25	47	32	27	21	<15	<15	<15	<15
30	48	39	35	27	18	<15	<15	<15
35	48	44	40	33	25	<15	<15	<15
40	49	46	45	39	32	20	<15	<15
45	48	49	49	44	39	29	23	<15

Maximum end velocity of jet

DSCXLS-Z-1-...-01000, with coanda effect

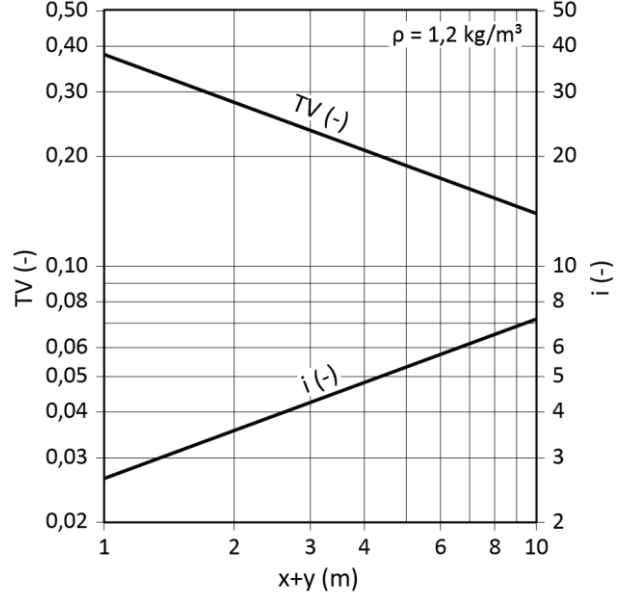
(supply air, L = 1000 mm)



Temperature and induction ratios

DSCXLS-Z-1-...-01000, with coanda effect

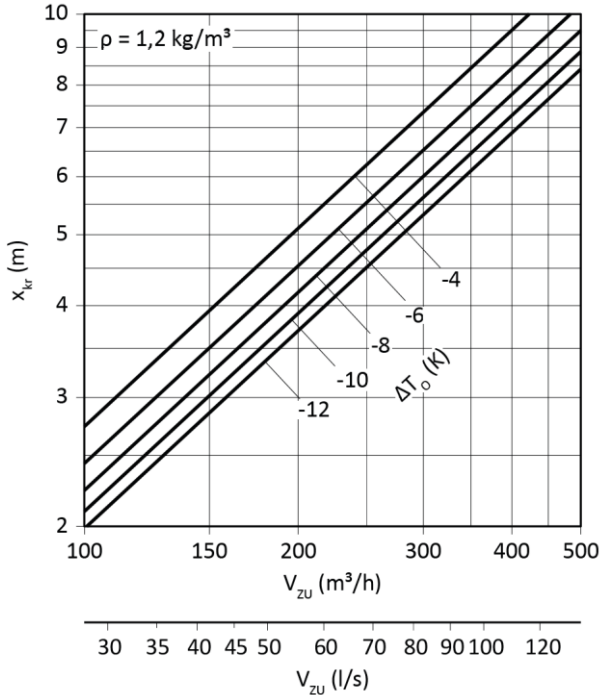
(supply air, L = 1000 mm)



Critical throw

DSCXLS-Z-1-...-01000, with coanda effect

(supply air, L = 1000 mm)



LEGEND

V_{ZU}	(m ³ /h) [l/s]	= Supply air volume
V_{AB}	(m ³ /h) [l/s]	= Return air volume
V_X	(m ³ /h) [l/s]	= total volumetric flow at point x
L_W	(dB)	= sound power level ($W_{ref} = 1 \text{ pW}$)
L_{WA}	[dB(A)]	= A-weighted sound power level ($W_{ref} = 1 \text{ pW}$)
f_m	(Hz)	= Octave band centre frequency
v_{max}	(m/s)	= Maximum end velocity of jet
v_{mittel}	(m/s)	= average end velocity of jet ($v_{mittel} = v_{max} \times 0.5$)
x	(m)	= horizontal throw
y	(m)	= vertical throw
x+y	(m)	= horizontal + vertical throw
x_{kr}	(m)	= critical throw
Δp_t	(Pa)	= total pressure loss
P_{dyn}	(Pa)	= Dynamic pressure
P_{stat}	(Pa)	= Static pressure
TV	(-)	= temperature ratio ($TV = \Delta T_x / \Delta T_O$)
i	(-)	= induction ratio ($i = V_X / V_{ZU}$)
ΔT_O	(K)	= temperature difference between supply air and room temperature ($\Delta T_O = t_{ZU} - t_R$)
ΔT_{OK}	(K)	= temperature difference between supply air and room temperature in cooling mode
ΔT_{OH}	(K)	= temperature difference between supply air and room temperature in heating mode
ΔT_x	(K)	= temperature difference at point x
t_R	(°C)	= room temperature
t_{ZU}	(°C)	= supply air temperature
ρ	(kg/m ³)	= Density
KF	(-)	= Correction factor
Iso	(-)	= isothermal
DS	(%)	= Damper position
FQ	(%)	= Free cross-section
L	(mm)	= length
BL	(mm)	= Band length
KHS	(mm)	= total height
KB	(mm)	= Width of box
KH	(mm)	= Height of box
D	(mm)	= Diameter
TS	(mm)	= section
DL	(mm)	= Difference in length
KL	(mm)	= Length of box
KDL	(mm)	= difference in length, plenum box
EÖB	(mm)	= Installation opening width
EÖL	(mm)	= Installation opening length

ORDER CODE SLOT DIFFUSER

01	02	03	04	05	06
Type	Model	Air throw	Frame profile	Frame surface	Blade colour
Example					
DSCXLS	-1	-Z	-R0	-ELOX	-L9011

07	08	09	10	11	12
Blade position for air jet	Single / band design	Length	Mounting	End piece	Dummy piece
Example					
-L	-N	-01000	-VM	-E00	-BS0

Sample

DSCXLS-1-Z-R0-ELOX-L9011-L-N-01000-VM-E00-BS0

Slot diffuser DSCXLS | 1-slot, with 30 mm slot width | Supply air (with blades) | Standard frame profile | Aluminium natural colour anodised | Blades made of aluminium painted similar to RAL 9011 (graphite black) | Horizontal blades with one-way throw to the left | Single design | Length 1000 mm | Concealed mounting | Without end piece | Without dummy piece

ORDER DETAILS

01 - Type

DSCXLS = slot diffuser DSCXLS

02 - Model

1 = 1-slot, with slot width 30 mm.

03 - Air throw

Z = supply air (with blades).

A = return air (without blades, with perforated plate).

04 - Frame profile

R0 = Standard frame profile (with support profile, for visible installation on the ceiling).

05 - Frame surface

ELOX = Natural colour anodised aluminium (standard).

9010 = Aluminium painted to colour RAL 9010 (white).

9011 = Aluminium, painted to RAL colour 9011 (graphite black).

xxxx = Aluminium painted to another RAL colour, freely selectable (at an extra charge, always with 4 digits).

06 - Blade colour

00000 = for air throw return air without blades with perforated plate, made of sheet steel painted to RAL colour 9011 (graphite black).

L9010 = for air throw supply air with blades, made of aluminium painted to RAL colour 9010 (white).

L9011 = for air throw supply air with blades, made of aluminium painted to RAL colour 9011 (graphite black) (standard).

Lxxxx = for air throw supply air with blades, made of aluminium painted to another RAL colour, freely selectable (always with 5 digits).

07 - Blade position for air jet

0 = without blades, for return air only.

V = blades with vertical throw.

L = blades with horizontal one-way throw to the left (standard).

R = blades with horizontal one-way throw to the right.

08 - Single / band design

N = single design (length max. 1500 mm).

B = band design (available lengths according to SCHAKO standard for band design, single element length max. 1500 mm).
With fishplates, supplied loose (2 for each connection)

09 - Length

01000 = length 1000 mm.

01500 = length 1500 mm.

xxxxx = length in mm, can be freely selected (always with 5 digits)

10 - Mounting

00 = without connection (only possible without plenum box).

FV = Permanent connection with plenum box (only possible in connection with plenum box).

VM = concealed mounting (only possible with plenum box) (standard).

GT = mounting with counter pole brace (only possible without plenum box, screws and pole brace traps are supplied loose, 2 pieces).

KB = Mounting with clamping strap (not possible in connection with plenum box, screws and clamp straps supplied loose, 2 pieces).

AL = Suspension lugs (only possible without plenum box, supplied loose and not folded, 4 pieces).

11 - End piece

- E00 = without end piece (standard).
- ES1 = Straight end piece, supplied loose (pair).
- EB1 = Straight end piece, mounted ex works on both sides.
- EL1 = Straight end piece, mounted ex works on the left side.
- ER1 = Straight end piece, mounted ex works on the right side.
- ES2 = Angle end piece, supplied loose (pair).
- EB2 = Angle end piece, mounted ex works on both sides.
- EL2 = Angle end piece, mounted ex works on the left.
- ER2 = Angle end piece, mounted ex works on the right side.

In the band design, the end piece is mounted to the left side of the section and to the right side of the difference length as a standard.

End pieces are painted to RAL colour of the frame profile.

13 - Dummy piece

- BS0 = without dummy piece.
- BS1 = with dummy piece made of sheet steel painted to RAL 9011 (graphite black).
 - Dummy piece only possible without plenum box.
 - Possible starting from length L = 200 mm. Mounting only possible with counter pole brace (-GT) or clamp strap (-KB).

PLENUM BOX ORDER CODE

01	02	03	04	05	06	07	08
Type	Diffuser	Model	Single / band design	Length	Mounting of box	Material	Damper
Example							
ASK	-28	-1	-N	-01000	-FV	-SV	-DK0

09	10	11	12	13	14	15
Rubber lip seal	Insulation	Height of plenum box	Box neck extension	Spigot position	Spigot diameter	Suspension
Example						
-GD0	-I0	-KHS	-KVS	-S1	-SDS	-E0

Sample

ASK-28-1-N-01000-FV-SV-DK0-GD0-I0-KHS-KVS-S1-SDS-E0

Plenum box for slot diffuser | for DSCXLS | 1-slot | Single design | Length 1000 mm | Permanent connection | Galvanised sheet steel | Without damper | Without rubber lip seal | Without insulation | Standard height of plenum box | Standard box neck | With lateral spigot | Standard spigot diameter | Without riveting nut

ORDER DETAILS

01 - Type

ASK = plenum box for slot diffuser.

02 - Diffuser

28 = for DSCXLS.

03 - Model

1 = 1-slot.

04 - Single / band design

N = single design (length of box max. 1500 mm).

B = band design (available lengths according to SCHAKO standard for band design).

05 - Length

01000 = length 1000 mm.

01500 = length 1500 mm.

xxxxx = Length in mm, freely selectable (always with 5 digits, length min. 400 mm / max. 1500 mm).

06 - Mounting of box

FV = permanent connection (standard).

VM = concealed mounting.

07 - Material

SV = galvanised sheet steel (standard).

08 - Damper

DK0 = without damper (standard).

DK2 = with damper and cable-operated adjustment (SZV) (in the connection spigot).

09 - Rubber lip seal

GD0 = without rubber lip seal (standard).

GD1 = with rubber lip seal.

10 - Insulation

I0 = without insulation (standard).

Ii = with box insulation inside.

Ia = with box insulation outside.

11 - Height of plenum box

KHS = standard height of plenum box.

xxx = Height of box in mm, freely selectable (minimum height [KHS] = spigot diameter + 82 mm, always 3 digits).

12 - Box neck extension

KVS = Standard box neck.

xxx = Box neck extension in mm, freely selectable (always 3 digits, >45 mm to 200 mm possible).

13 - Spigot position

S0 = spigot from above.

S1 = Lateral spigot (standard).

S2 = Lateral spigot on the opposite side.

14 - Spigot diameter

SDS = spigot diameter standard.

xxx = spigot diameter in mm, can be freely selected (always with 3 digits).

15 - Suspension

E0 = without riveting nut.

EM = with riveting nut.

ORDER CODE CORNER ANGLE

01	02	03	04	05
Type	Diffuser	Model	Frame profile	Frame surface
Example				
EW	-28	-1	-R0	-ELOX

06	07	08	09	10
Dummy plate colour	Angle between sides	Left-side length (a):	Right-side length (b)	Mounting
Example				
-B9011	-090	-000	-000	-GT

Sample

EW-28-1-R0-ELOX-B9011-090-000-000-GT

Corner angle for slot diffuser | For DSCXLS | 1-slot, with slot width 30 mm | Standard frame profile | Aluminium natural colour anodised | Aluminium painted to RAL colour 9011 (graphite black) | 90° | Standard length (L = 250 mm) | Standard length (L = 250 mm) | Mounting with counter pole brace

ORDER DETAILS

01 - Type

EW = Corner angle for slot diffuser.

02 - Diffuser

28 = for DSCXLS.

03 - Model

1 = 1-slot, with slot width 30 mm.

04 - Frame shape

R0 = Standard frame profile (with support profile, for visible installation on the ceiling).

05 - Frame surface

ELOX = Natural colour anodised aluminium (standard).

9010 = Aluminium painted to colour RAL 9010 (white).

9011 = Aluminium, painted to RAL colour 9011 (graphite black).

xxxx = Aluminium painted to another RAL colour, freely selectable (at an extra charge, always with 4 digits).

06 - Colour of cover plate

B9005 = Sheet steel painted in RAL colour 9005 (black).

B9010 = Sheet steel painted to RAL colour 9010 (white) (standard).

Bxxxx = Sheet steel painted to another RAL colour, freely selectable (always with 5 digits).

07 - Angle between sides

090 = 90° (standard).

xxx = Angle as required (value between 90° [090] and 170° [170] possible, always with 3 digits).

08 - Left-side length (a)

000 = Standard length (L = 250 mm).

xxx = Length in mm, freely selectable (minimum length = standard length, always 3 digits).

09 - Right-side length (b)

000 = Standard length (L = 250 mm).

xxx = Length in mm, freely selectable (minimum length = standard length, always 3 digits).

10 - Mounting

GT = Mounting with counter pole brace (screws and pole brace traps are supplied loose, 2 pieces).

KB = Mounting with clamp straps (screws and clamp straps supplied loose, 2 pieces).

AL = Mounting with suspension lugs (supplied loose and not folded, 4 pieces).

SPECIFICATION TEXT

Highly inductive slot diffuser, free cross-section, resistance and sound power level constant in all blade positions, suitable for use in rooms with a height between 2.6 m and 4 m.

Slot diffuser model (number of slots) 1-slot (-1), with slot width 30 mm.

Supply air model with air deflection blades made of painted aluminium:

- RAL colour 9010 (white) (-L9010).
- RAL colour 9011 (graphite black, standard) (-L9011).
- to another RAL colour, freely selectable (-Lxxxx, always 5 digits)

With connecting bridge made of plastic material, colour similar to RAL 9005 (black).

Product: SCHAKO Type **DSCXLS-1-Z...**

Return air model without air deflection blades (-00000), with perforated plate made of painted sheet steel RAL 9011 (graphite black) (FQ = 46 %), as cover screen.

With connecting bridge made of galvanised sheet steel.

Product: SCHAKO Type **DSCXLS-1-A...**

Frame made of extruded aluminium profile, consisting of:

- **Frame profile:**
 - Frame profile Standard (-R0, with support profile), for visible installation on the ceiling.
- **Frame surface:**
 - natural colour anodised (-ELOX, standard).
 - painted to the colour RAL 9010 (white, -9010).
 - painted to RAL colour 9011 (graphite black, -9011).
 - painted to another RAL colour, freely selectable (-xxxx, always 4 digits).

Blade position for air jet:

- without blades, for return air (-0).
- Blades with vertical throw (-V).
- Blades with horizontal one-way throw to the left (-L, standard).
- Blades with one-way horizontal throw to the right (-R).

Length / Model:

Single design (-N)

- 1000 mm (-N-01000).
 - 1500 mm (-N-01500).
 - Length in mm, can be freely selected (-N-xxxxx, always with 5 digits).
- (Length L ≥ 400 mm to ≤ 1500 mm can be fitted with plenum box, dummy piece possible from length 200 mm)

Band design (-B)

- Length in mm, as band (-B-xxxxx).
- Available lengths according to SCHAKO standard for band design.
- Individual elements length max. 1500 mm.
- With fishplates made of aluminium sheet, supplied loose (2 for each connection).

Mounting:

- without connection (-00)
 - Only possible without plenum box.
- Permanent connection with plenum box (-FV)
 - Only possible with plenum box.
 - Only for return and supply air model.
 - The slot diffuser is permanently connected to the plenum box.
- Concealed mounting with plenum box (-VM)
 - Only possible with plenum box.
 - Only for return and supply air model.
 - The slot diffuser is screwed to the pole brace in the plenum box housing with concealed screws.
 - Frame with foam gasket.
 - Plenum box mounted ex works.
- Mounting with counter pole brace (-GT)
 - Only possible without plenum box.
 - Screws and pole brace traps are supplied loose (2 pieces).
 - Pole brace traps consisting of folded galvanised sheet steel and pole brace made of extruded aluminium profile with DIN thread.
 - The slot diffuser is screwed to the counter pole brace (pole brace strap) with concealed screws (included in delivery).
 - **For mounting, access on the rear is required!**
- Mounting with clamp strap (-KB)
 - Only possible without plenum box.
 - Screws and clamp straps are supplied loose (2 pieces).
 - Clamp strap made of galvanised sheet steel.
 - The slot diffuser is screwed to the clamp strap with concealed screws (included in delivery).
 - **For mounting, access on the rear is not required!**
- Mounting with suspension lugs (-AL)
 - Only possible without plenum box.
 - 4 pieces, supplied loose and not folded.
 - The slot diffuser is fastened to 4 suspension brackets.
 - Suspension lug made of galvanised sheet steel, with holes for hook mounting.

Accessories:

- End pieces
 - without end piece (-E00).
 - End piece models:
 - End piece, straight, made of galvanised sheet steel, painted to RAL colour of the frame profile:
 - Supplied loose (-ES1, pair) (standard).
 - Mounted ex works on both sides (-EB1).
 - Mounted ex works on the left side (-EL1).
 - Mounted ex works on the right side (-ER1).
 - Angle end piece, made of extruded aluminium profile, painted in the RAL colour of the frame profile.
 - Supplied loose (-ES2, pair) (standard).
 - Mounted ex works on both sides (-EB2).
 - Mounted ex works on the left side (-EL2).
 - Mounted ex works on the right side (-ER2).
- Dummy piece
 - Without dummy piece (-BS0).
 - with dummy piece (-BS1), made of sheet steel painted to RAL 9011 (graphite black). Mounting only possible with counter pole brace (-GT) or clamp strap (-KB) (possible starting from length L = 200 mm, only without plenum box).
- Plenum box (-ASK-28), for DSCXLS, model (number of slots) 1-slot (-1), made of galvanised sheet steel (-SV, standard), with suspension lugs.
 - Single / band design:
 - Single design (-N, length of box max. 1500 mm)
 - Band design (-B, available lengths according to SCHAKO standard for band design)
 - Length:
 - 1000 mm (-01000)
 - 1500 mm (-01500)
 - Length in mm, can be freely selected (-xxxxx, always with 5 digits) (length min. 400 mm / max. 1500 mm).
 - Mounting of box:
 - Permanent connection (-FV) (standard).
 - Concealed mounting (-VM).
 - Damper:
 - without damper (-DK0) (standard).
 - with damper and cable-operated adjustment (-DK2), made of galvanised perforated plate (FQ = 36 %), in the connection spigot, adjustable, for simple air volume regulation.
 - Rubber lip seal:
 - Without rubber lip seal (-GD0).
 - With rubber lip seal (-GD1) made of special rubber, at the connection spigot.
 - Insulation:
 - Without insulation (-I0)
 - With box insulation inside (-Ii), thermal insulation at the inside of the plenum box.
 - With box insulation outside (-Ia), thermal insulation at the outside of the plenum box.
 - Height of plenum box:
 - Standard height of plenum box (-KHS).
 - Height of plenum box in mm, freely selectable (-xxx) (minimum height [KHS] = spigot diameter + 82 mm, always with 3 digits).
 - Box neck extension:
 - Standard box neck (-KVS).
 - Box neck extension in mm, freely selectable (-xxx) (possible from >45 mm to 200 mm).
- Spigot position:
 - Spigot from above (-S0).
 - Lateral spigot (-S1) (standard).
 - Lateral spigot located on the opposite side (-S2).
- Spigot diameter:
 - Standard spigot diameter (-SDS).
 - Spigot diameter in mm, freely selectable (-xxx, always with 3 digits).
- Suspension:
 - Without riveting nut (-E0).
 - With riveting nut (-EM), made of brass.
- with air diffuser plate (FQ = 46 %), made of galvanised perforated plate, for even distribution of the air flow (to stabilize the pressure in the plenum box).
- Corner angle (-EW-28), for DSCXLS, model (number of slots) 1-slot (-1) with slot width 30 mm, with standard frame profile (-R0, with support profile, for visible installation on the ceiling).
 - frame surface, made of extruded aluminium profile:
 - natural colour anodised (-ELOX, standard).
 - painted to the colour RAL 9010 (white) (-9010).
 - painted to RAL colour 9011 (graphite black) (-9011).
 - painted to another RAL colour, freely selectable (at an extra charge) (-xxxx).
 - Connecting bridge made of galvanised sheet steel, fastened by means of rivets.
 - Colour of cover plate:
 - Sheet steel painted to RAL colour 9005 (black) (-B9010) (standard).
 - Sheet steel painted to RAL colour 9010 (white) (-B9010).
 - Sheet steel painted to another RAL colour, freely selectable (Bxxxx).
 - Angle between sides:
 - 90° (-090).
 - Angle as required (-xxx), values between $\alpha = 90^\circ$ (-090, standard) and 170° (-170) are possible.
 - Left-side length (a):
 - Standard length L = 250 mm (-000).
 - Length can be freely selected (-xxx) (minimum length = standard length).
 - Right-side length (b):
 - Standard length L = 250 mm (-000).
 - Length can be freely selected (-xxx) (minimum length = standard length).
 - Including 4 fishplates (-VL, included in delivery) made of aluminium (same colour as frame), supplied loose.
 - Mounting:
 - with counter pole brace (-GT), screws and pole brace traps are supplied loose (2 pieces).
 - with clamp strap (-KB), screws and clamp straps are supplied loose (2 pieces).
 - with suspension lugs (-AL), supplied loose and not folded, 4 pieces.