

DSCP

Curved slot diffuser for plasterboard ceilings

Contents

Function and use	2
Models.....	2
Mounting.....	2
Quick selection	2
Blade position for air jet	3
Processing.....	3
Accessories	4
Dimensions	5
Dimensions of accessories.....	6
Plenum box in band design	10
Fastening methods	11
Assembly detail	11
Installation instructions	12
Mounting instructions	12
Legend	12
Slot diffuser order code.....	13
Plenum box order code	14
Specification text	15

FUNCTION AND USE

The curved ceiling slot diffuser type DSCP is suitable for use in rooms with a height between 2.6 m and 4 m for direct installation in plasterboard ceilings or ceiling cavities (pressure ceilings). The special shape of the frame profile allows good installation in the plasterboard ceiling.

Frame profiles are fitted with bores to allow them to be connected to the plasterboard ceiling using screws. The air deflection blades adjustable from below allow a variety of throw adjustment options. In cooling mode, a one- or two-way air throw pattern can be set. This achieves high induction while the velocity and temperature difference of the supply air jet are effectively reduced.

Due to the central housing of the blades, the free cross-section is always the same. Pressure loss and sound power level remain therefore constant even when the blades are adjusted. A subsequent change of the air throw pattern on site is possible at any time.

If a desired blade position is specified in the order, it will be set at the factory. The large free cross-section allows a greater volumetric flow compared with other slot diffusers. Thanks to its stable air jet and high induction, the curved DSCP slot diffuser can be used in cooling mode up to $\Delta T_0 \leq -8$ K.

The resistance created by the blades ensures that the supply air is distributed equally across the whole curved length of the slot diffuser.

The curved slot diffuser can be manufactured as 1- or 2-slot model and is available either in single design or in band design.

MODELS

DSCP-1	1-slot
DSCP-2	2-slot
DSCP-...-Z	Supply air (with blades)
DSCP-...-A	Return air (without blades, with perforated plate)
DSCP-...-PL	With frame profile PLASTER
DSCP-...-V	Blades with vertical throw
DSCP-...-L	Blades with horizontal one-way throw toward the inside
DSCP-...-R	Blades with horizontal one-way throw toward the outside
DSCP-...-B	Blades with horizontal two-way throw
DSCP-...-O	Without blades, with perforated plate (for return air)
DSCP-...-N	Single design (curved length max. 1500 mm)
DSCP-...-B	Band design (curved length distribution according to SCHAKO standard lengths for band design)

MOUNTING

Screw mounting (-SM, standard)

- Screws must be provided on site
- With mounting bracket

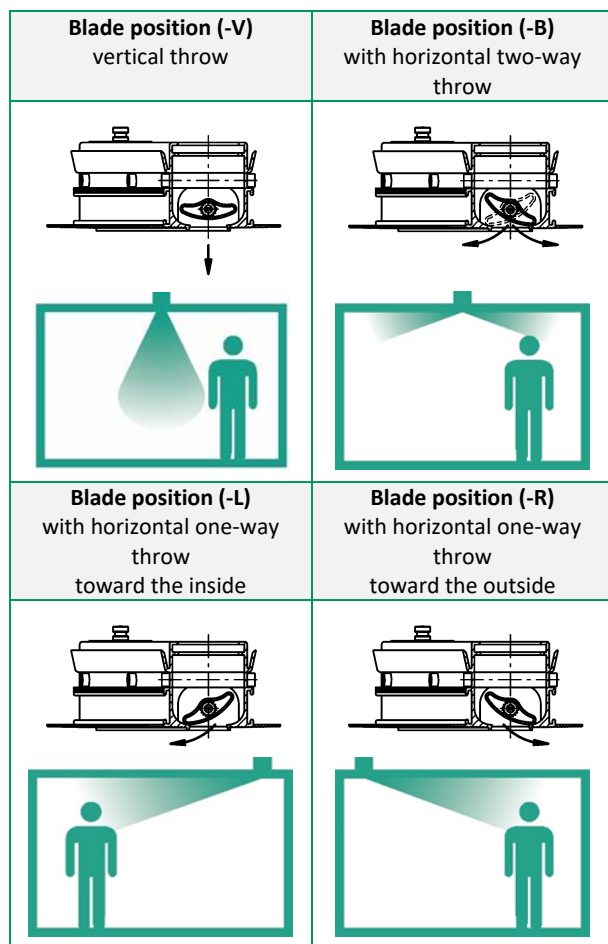
QUICK SELECTION

Without plenum box

Values for curved length BoL = 1,000 mm

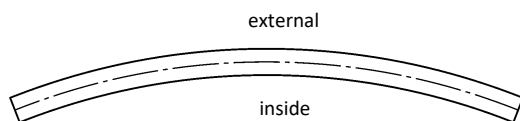
DSCP-1 (1-slot)				DSCP-2 (2-slot)			
V_{zu} (m³/h)	l/s	L_{WA} [dB(A)]	Δp_t (Pa)	V_{zu} (m³/h)	l/s	L_{WA} [dB(A)]	Δp_t (Pa)
60	16.7	< 20	5	100	27.8	< 20	5
80	22.2	21	8	130	36.1	22	8
100	27.8	28	13	160	44.4	28	13
120	33.3	33	17	200	55.6	35	17

BLADE POSITION FOR AIR JET



With the blade positions (-L) and (-B), the concentric air throw toward the inside may result in greater velocities and turbulence.

Schematic diagram of a curved shape



With the blade positions (-L) and (-B), the concentric air throw toward the inside may result in greater velocities and turbulence.

PROCESSING

Frame surface

- consisting of:
 - natural aluminium (-ALRO) (standard)
 - aluminium painted to RAL colour 9005 (-9005) (black)
 - aluminium painted to a freely selectable RAL colour (-xxxx) (always with 4 digits)
- central partition (only for 2-slot models):
 - for supply air
 - for frame made of natural aluminium, same RAL colour as the blade.
 - for painted frame made of aluminium, same RAL colour as the frame.
 - for return air, made of aluminium painted to RAL 9005 (black)

Blade colour

- Plastic (hard PVC):
 - Colour similar to RAL 9005 (black, standard) (-L9005).
 - Colour similar to RAL 9010 (white) (-L9010).
 - RAL colour freely selectable (-Lxxxx).
- For return air without blade (-00000), with perforated plate made of sheet steel painted to RAL 9005 (black), as cover screen.

Perforated plate

- for return air, sheet steel RAL 9005 (black).

Blade holding device

- Aluminium ducts

Internal blade divider (standard)

- Plastic (PA type 6), same colour as the blade.

Internal blade divider (support for concealed mounting)

- Plastic (PA type 6), same colour as the blade.

External blade plates (end plates)

- Plastic (ABS), same colour as the blade.

Connecting pin

Connection diffuser - diffuser

- Made of plastic
- For band design only
- Supplied loose (2x for each connection)

Mounting bracket

- Made of perforated sheet steel
- Supplied loose
- For plasterboard ceiling:
 - Ceiling depth 12.5 mm (-125) (standard)
 - Ceiling depth 9.5 mm (-095)
 - Ceiling depth can be freely selected (-xxx, always with 3 digits)
- Mounting help for screw mounting

End piece (-EP / -EB)

- with surrounding edge for plastering, mounted ex-works on both sides (-EP) (standard)
 - made of galvanised sheet steel
- straight, mounted ex works on both sides (-EB)
 - made of galvanised sheet steel

In the band design, the end piece is mounted to the left side of the section and to the right side of the difference length as a standard.

Ceiling cutout template

- Cutout template for plasterboard ceiling
- Supplied loose
- made of galvanised sheet steel

ACCESSORIES

Dummy piece (-BS0 / -BS1)

- without dummy piece (-BS0).
- with dummy piece (-BS1):
 - made of sheet steel painted to RAL 9005 (black).
 - only without plenum box ASK-46.
 - with fastening clip for mounting on the slot diffuser.

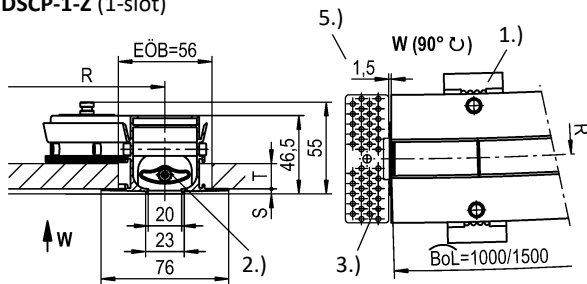
Plenum box (-ASK-46)

- Model (number of slots):
 - 1-slot (-1)
 - 2-slot (-2)
- Single / band design:
 - Single design (-N, curved length of box max. 1540 mm)
 - Band design (-B, curved length distribution according to SCHAKO standard lengths for band design)
- Curved length:
 - 1000 mm (-01000)
 - 1500 mm (-01500)
 - Length in mm, can be freely selected (-xxxxx, always with 5 digits)
- Radius:
 - Specify a radius ≥ 2000 mm (-xxxxx, always with 5 digits)
- Mounting of box:
 - Without diffuser mounting (-OM) (standard).
- Material:
 - Galvanised sheet steel (-SV) (standard).
- Damper:
 - without damper (-DK0) (standard).
 - With damper and cable-operated adjustment (-DK2) made of galvanised sheet steel, in the connection spigot, adjustable, for simple air volume regulation.
- Rubber lip seal:
 - Without rubber lip seal (-GD0)
 - With rubber lip seal (-GD1) made of special rubber, at the connection spigot.
- Insulation:
 - Without insulation (-I0)
 - With insulation outside (-Ia), thermal insulation at the outside of the plenum box.
- Height of plenum box:
 - Standard height of plenum box (-KHS)
 - Height of box in mm, freely selectable (-xxx) (minimum height = spigot diameter + 65 mm, always with 3 digits)
- Spigot position:
 - Spigot from above (-S0).
 - Inner lateral spigot (-S1) (standard).
 - Outer lateral spigot (-S2).
- Spigot diameter:
 - Standard spigot diameter (-SDS).
 - Spigot diameter in mm, freely selectable (-xxx, always with 3 digits).
- Mounting without riveting nut (-E0).
- With air diffuser plate, made of galvanised sheet steel.

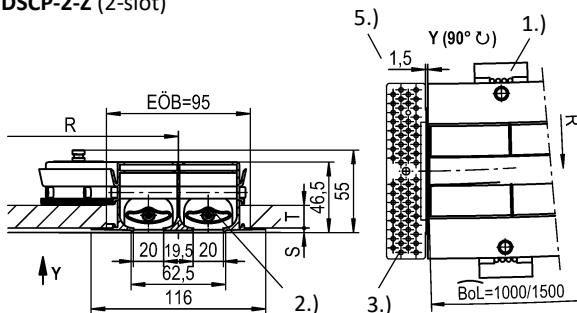
DIMENSIONS

Supply air (-Z)

DSCP-1-Z (1-slot)

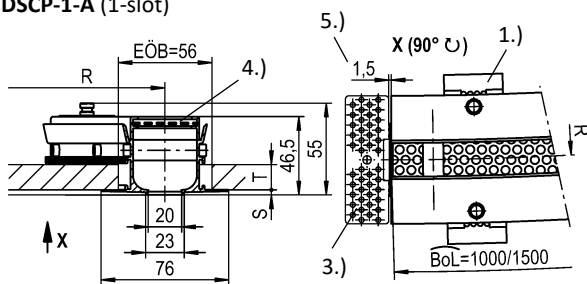


DSCP-2-Z (2-slot)

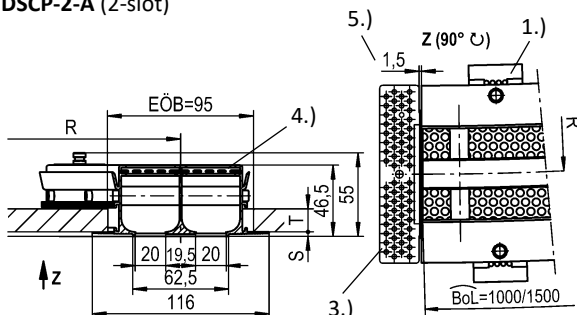


Return air (-A)

DSCP-1-A (1-slot)



DSCP-2-A (2-slot)



- 1.) Mounting bracket included in delivery
- 2.) Air deflection blade
- 3.) End piece
- 4.) Perforated plate
- 5.) Gap dimension

Filling

In case of fastening with screw mounting (-SM): S = 4 mm

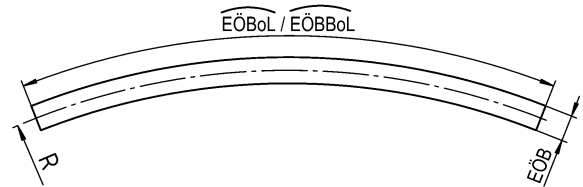
Plasterboard ceiling

T = 9.5 mm / 12.5 mm (standard) / can be freely selected.
(see page 10)

Radius

The radius R is always specified in the centre of the slot diffuser. $R \geq 2,000$ (1- / 2-slot).

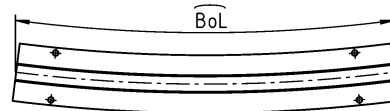
Installation opening



Curved length distribution for slot diffuser

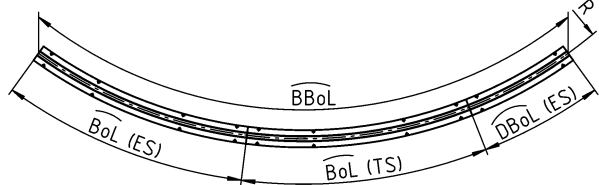
Single design (-N)

- Curved length BoL = 1000 mm (-01000-N)
(Curved length of box KBoL = 1040 mm) (-01000-N)
- Curved length BoL = 1500 mm (-01500-N)
(Curved length of box KBoL = 1540 mm)
- Curved length in mm, can be freely selected (-xxxxx-N)
(Curved length of box KBoL = BoL + 40 mm), curved length BoL < 1000 mm to ≥ 400 mm can be fitted with plenum box)



Band design (-B)

- Curved length in mm, can be freely selected, as band (-xxxxx-B)
(curved length distribution according to SCHAKO standard lengths)



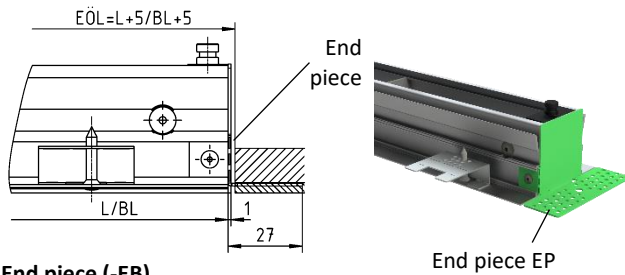
When the slot diffuser type DSCP is designed as a band, the curved length of the band BBOL is assembled from sections (BoL) of 1000 mm or 1500 mm. The curved difference pieces < 1500 mm to > 400 mm can be fitted with a plenum box. The curved difference pieces < 400 mm are designed as dummy pieces without plenum box.

A different band division is possible after consultation and when required by the customer.

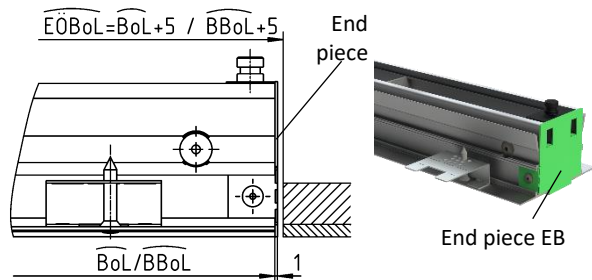
- | | | |
|--------|---|---|
| ES | = | end piece |
| TS | = | section |
| BoL | = | curved length of diffuser |
| DBOL | = | difference in curved length of diffuser |
| BBOL | = | curved length of diffuser, band design |
| EÖB | = | installation opening width |
| EÖBBoL | = | curved length of installation opening, band design
(EÖBBoL = BBOL + 5) |

End piece (-EP / -EB)

End piece (-EP) (standard)



End piece (-EB)



End pieces are mounted ex works on the slot diffuser, as plastering edge for elegant filling.

In the single design, the end pieces are fixed to the left and right front side of the slot diffuser.

In the band design, the end piece is mounted to the left side of the section and to the right side of the difference length as a standard.

Plasterboard ceiling

For models with screw mounting, mounting brackets (mounting help) are supplied loose (see page 10). The quantity depends on the curved length (BoL).

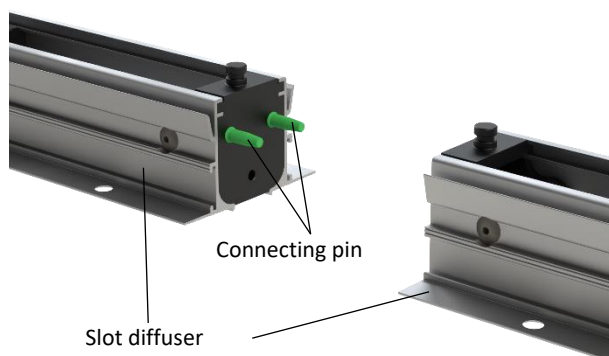
As a standard, the mounting bracket is supplied for a plasterboard ceiling of $T = 12.5$ mm. If the ceiling depth differs, the dimension T must be specified when ordering.

Slot diffuser connection in band design

Slot diffuser - slot diffuser

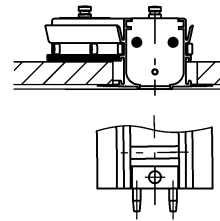
With connecting pin

Supplied loose (2x for each connection)

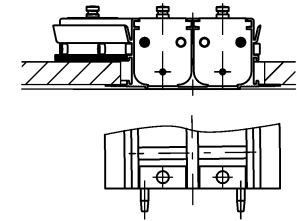


Arrangement of connecting pins

DSCP-1-...



DSCP-2-...



Attention:

The connecting pins are only suitable for positioning and for force transmission.

DIMENSIONS OF ACCESSORIES

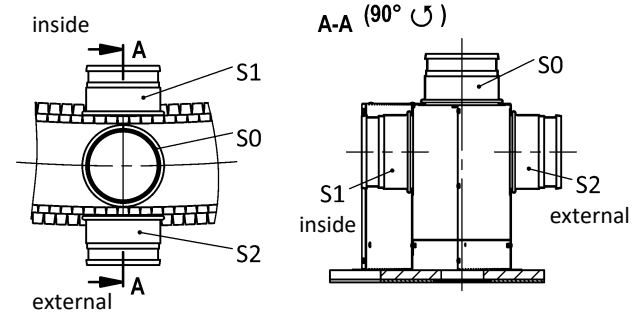
Plenum box (-ASK-46)

Spigot position

S0 = spigot from above

S1 = inner lateral spigot (standard)

S2 = outer lateral spigot



For models with one spigot (standard), the spigot lies in the middle of the curved length.

Dimensions of the plenum box: see page 7.

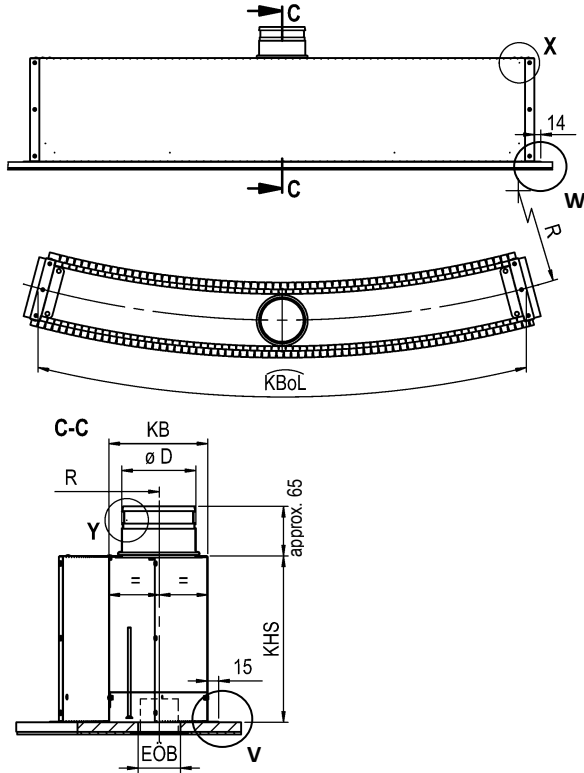
PLENUM BOX IN SINGLE DESIGN

Plenum box (-ASK-46-...-N-...)

Mounting of box without diffuser mounting (-OM)

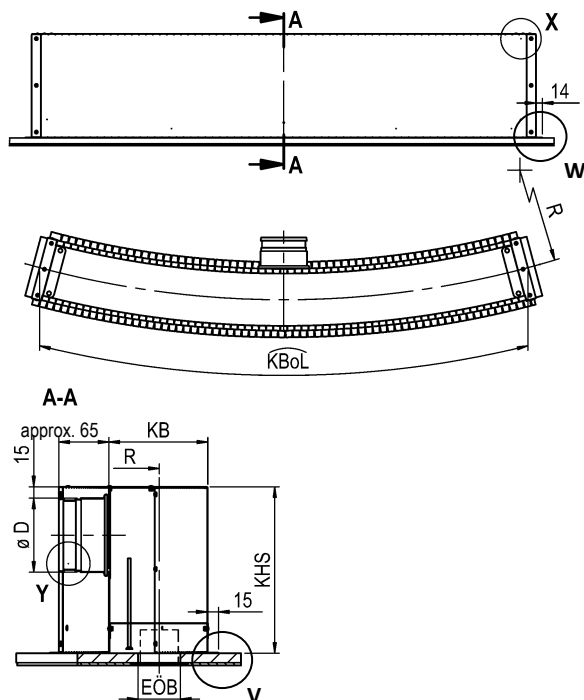
With spigot from above (-S0)

DSCP-...-ASK-46-...-S0



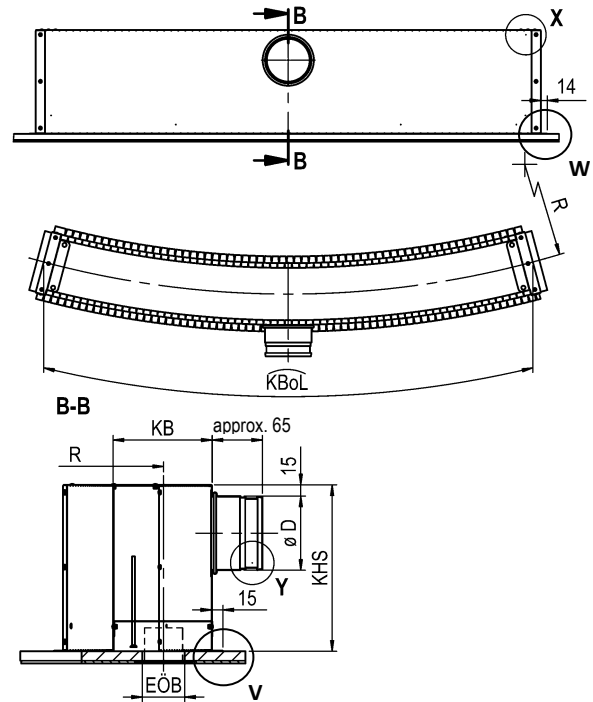
With inner lateral spigot (-S1, standard)

DSCP-...-ASK-46-...-S1



With outer lateral spigot (-S2)

DSCP-...-ASK-46-...-S2



Available sizes for plenum box (-ASK-46-...-N)

	EÖB	KB		KHS	ø D	
		-S0	-S1 -S2		KBoL	
					≤ 1040	> 1040 ... ≤ 1540
DSCP-1	56	157	132	220	ø 98	ø 123
DSCP-2	95	172	172	280	ø 138	ø 138

BoL	EÖBoL	KBoL	Weight (kg)	
			DSCP-1	DSCP-2
1000	1005	1040	4.5	5.5
1500	1505	1540	6.8	8.3

All dimensions in mm.

The plenum box ASK-46 is manufactured as standard in the plenum curved lengths KBoL = 1040 mm or 1540 mm.

The radius R is always specified in the centre of the slot diffuser or of the plenum box. $R \geq 2000$ (1- / 2-slot).

Minimum height of box KHS = spigot diameter + 65 mm.

Intermediate curved lengths and other spigot diameters are available upon request.

For rubber lip seal, detail Y, see page 8.

For fastening detail, detail V and W, see page 8.

For plenum box mounting, detail X, see page 8.

BoL = curved length of diffuser

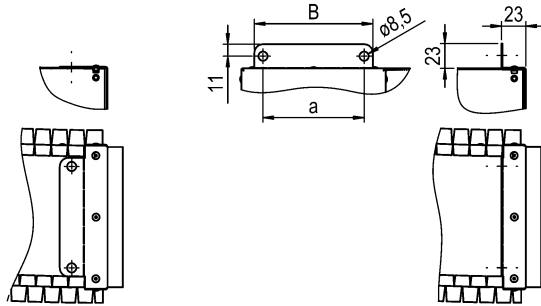
EÖBoL = Curved length of the installation opening (EÖBoL = BoL + 5)

KBoL = Curved length of the plenum box (KBoL = BoL + 40)

Plenum box suspension

View X

As-delivered condition with fitted fixing lugs
On-site with bent fixing lugs



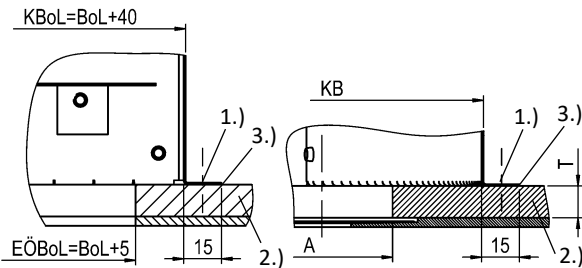
	a	B
DSCP-1	93.5	109.5
DSCP-2	133.5	149.5

Fastening details

For mounting, the plenum box is provided with fixing holes. A permanent connection to the plasterboard ceiling via $\varnothing 3.2$ bores is also possible. In this case, the plenum box must be additionally decoupled from the plasterboard ceiling using vibration dampening material. A suitable filling compound must be provided on site.

Detail W

Detail V



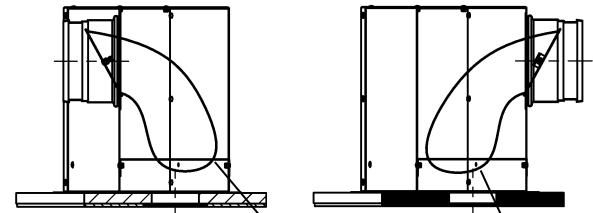
- 1.) Fastening on site $\varnothing 3.2$
 - 2.) Plasterboard ceiling on site
 - 3.) Decoupling (leak proofing on site)
- T = depth of plasterboard ceiling
BoL = curved length of diffuser
EÖBoL = curved length of installation opening
KBoL = curved length of the plenum box

If a plenum box is used, make sure that it has no direct contact to the diffuser. The volumetric flow adjustment must be carried out on site.

Damper (-DK2), for ASK-46

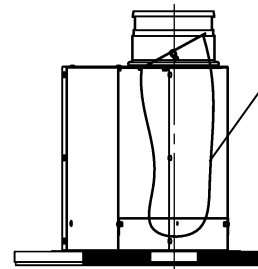
with cable-operated adjustment

Inner lateral connection (-S1) Outer lateral connection (-S2)



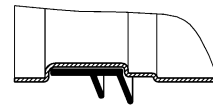
Connection from above (-S0)

Cable-operated adjustment



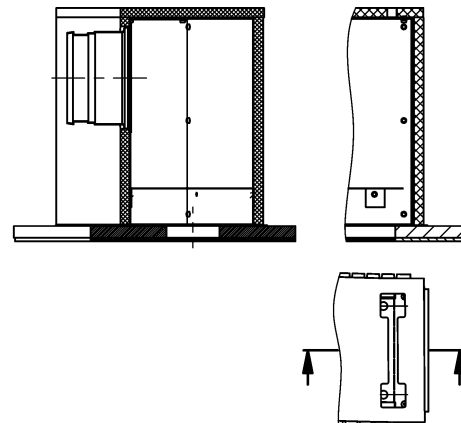
Rubber lip seal (-GD1), for ASK-46

Detail Y



Insulation (-Ia), for ASK-46

External (-Ia)



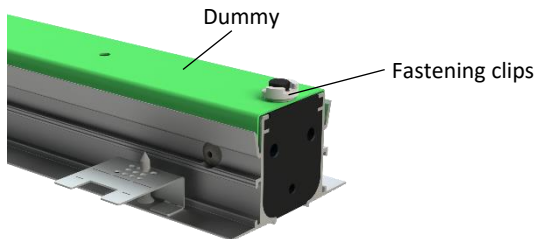
Dummy piece (-BS0 / -BS1)

Only possible without plenum box.

Models:

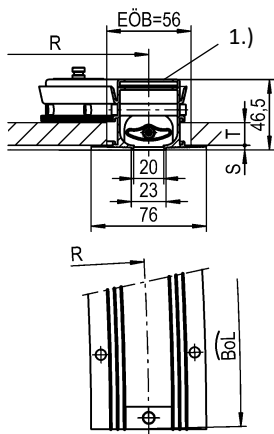
-BS0: without dummy piece.

-BS1: with dummy piece made of sheet steel painted to RAL 9005 (black).

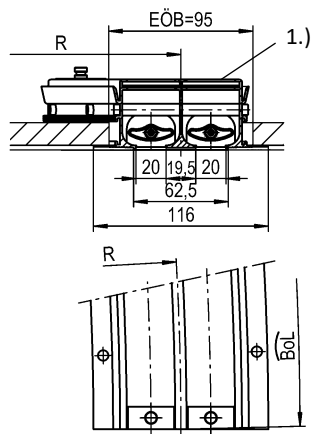


For supply air:

DSCP-1-Z

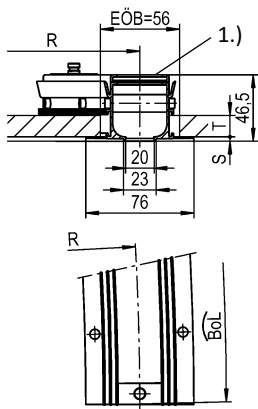


DSCP-2-Z

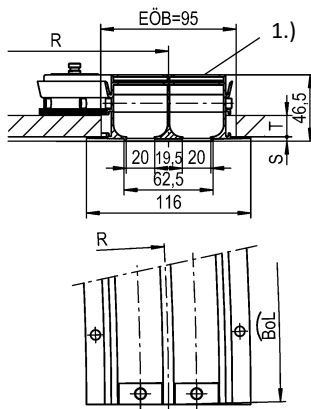


For return air:

DSCP-1-A



DSCP-2-A



1.) Dummy piece

EÖB = installation opening width

BoL = curved length of diffuser

PLENUM BOX IN BAND DESIGN

Plenum box (-ASK-46-...-N-...)

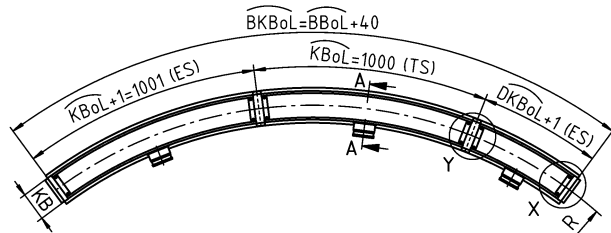
Mounting of box without diffuser mounting (-OM)

When the plenum box is designed as a band (BoL = >1500 mm), the total curved length of the box BKBoL is divided into standard curved lengths KBoL=1000 mm and into a difference in curved length DKBoL ≤ 1000 mm.

A difference in curved length <120 mm is not possible.

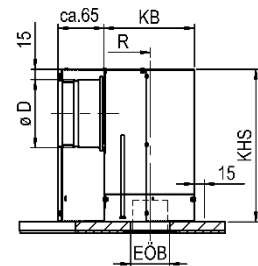
Box section and box front side fastening as well as a connecting angle must be provided on site.

The curved length refers to the middle of the plenum box.



Representation lateral inner spigot position (-S1)

A-A (90°)



DSCP-1:

DKBoL = >120 mm to <204 mm ⇒ without spigot

DKBoL = ≥204 mm to ≤1000 mm ⇒ with spigot

DSCP-2:

DKBoL = >120 mm to <244 mm ⇒ without spigot

DKBoL = ≥244 mm to ≤1000 mm ⇒ with spigot

$$DKBoL = BoL + 38 - (n \times 1000)$$

Available sizes for plenum box (-ASK-46-...-B)

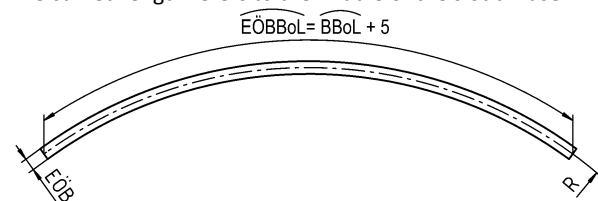
	EÖB	KB			KHS	øD
		-S0	-S1 / -S2			
DSCP-1	56	157	132		220	ø 98
DSCP-2	95	172	172		280	ø 138

Minimum height of box KHS = spigot diameter + 65 mm)

Intermediate lengths and other spigot diameters on request.

Installation opening for band design in plasterboard ceiling

The curved length refers to the middle of the slot diffuser.

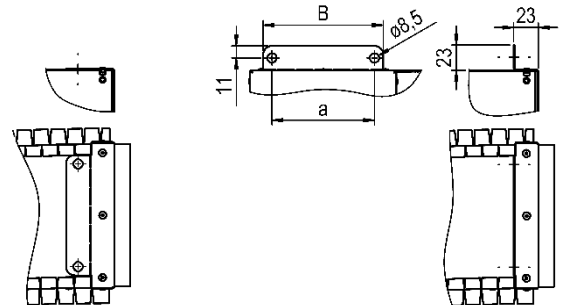


Plenum box suspension for band design

Detail X (box front side)

As-delivered condition
with fitted fixing lugs

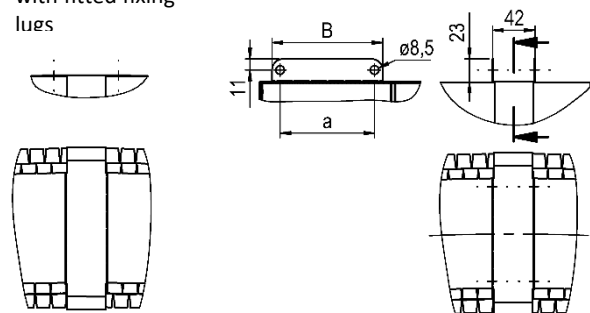
On-site
with bent fixing lugs



Detail Y (connecting bracket)

As-delivered condition
with fitted fixing lugs

On-site
with bent fixing lugs



	a	B
DSCP-1	93.5	109.5
DSCP-2	133.5	149.5

ES = end piece

TS = section

BoL = curved length of diffuser

BBoL = curved length of diffuser, band design

EÖB = curved length of installation opening

EÖBBoL = curved length of the installation opening for band design (EÖBBoL = BBoL + 5)

KBoL = curved length of the plenum box

DKBoL = compensation curved length of the plenum box

BKBoL = curved length of plenum box, band design

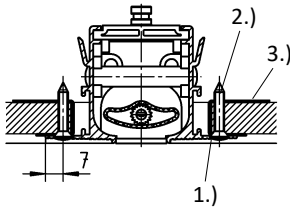
(BKBoL = BBoL + 40)

FASTENING METHODS

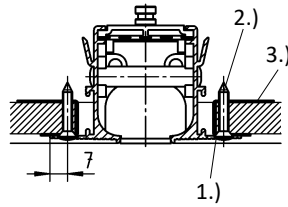
Screw mounting (-SM, standard)

Arrangement, number and size of the bores are the same for 1- and 2-slot models.

Supply air

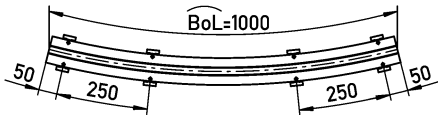


Return air

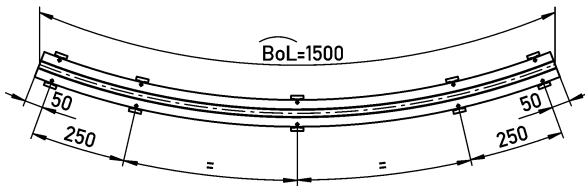


- 1.) Indentation ISO 15065-4
- 2.) Dry wall screw 3.5x35, use according to DIN EN 14566 on site
- 3.) Mounting bracket

BoL= 1,000 / with 8 indentations for SM mounting



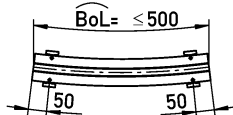
BoL= 1,500 / with 10 indentations for SM mounting



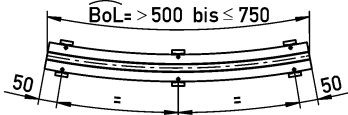
Number of indentations band design:

For compensation pieces and sections

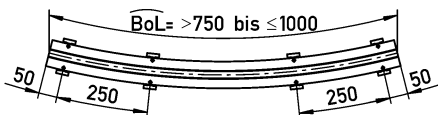
BoL= ≤500 / with 4 indentations



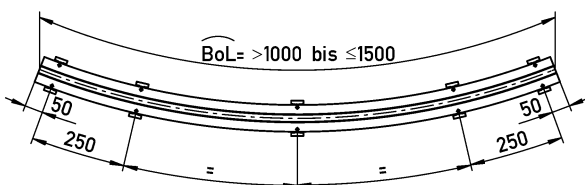
BoL= >500 to ≤750 / with 6 indentations



BoL= >750 to ≤1,000 / with 8 indentations



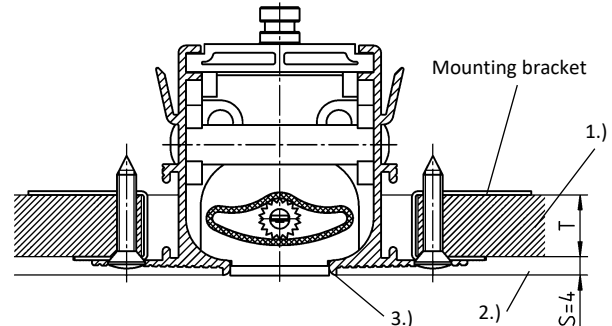
BoL= >1,000 to ≤1,500 / with 10 indentations



ASSEMBLY DETAIL

With mounting bracket:

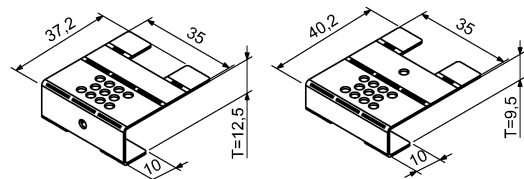
For fastening with screw mounting (-SM, standard)



Number of mounting brackets (mounting help)

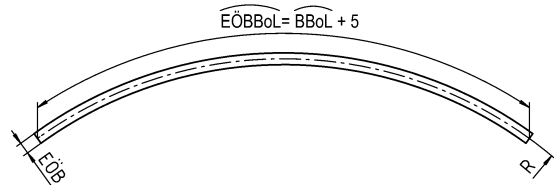
- 4 Mounting brackets: BoL = ≤500
- 6 Mounting brackets: BoL = >500 to ≤750
- 8 Mounting brackets: BoL = >750 to ≤1000
- 10 Mounting brackets: BoL = >1000 to ≤1500

Mounting bracket:



The mounting bracket is supplied loose and unbent. It will then be bent on site in order to fit the required ceiling depth. The single bore serves here as a marking for the ceiling depth T=12.5.

Plasterboard ceiling



The curved length of the installation opening (EÖBoL / EÖB-BoL) refers to the middle of the slot diffuser. For models with screw mounting, mounting brackets (mounting help) are supplied loose. The quantity depends on the curved length (BoL).

Filling

In case of fastening with screw mounting (-SM): S = 4 mm

- 1.) Plasterboard ceiling
 - 2.) Multiple filling on site (depending on quality level)
 - 3.) Special plastering edge for elegant filling
- BoL = curved length of diffuser
BBoL = curved length of diffuser, band design
EÖBoL = Curved length of the installation opening (EÖBoL = BoL + 5)
EÖBBoL = curved length of installation opening, band design (EÖBBoL = BBoL + 5)

INSTALLATION INSTRUCTIONS

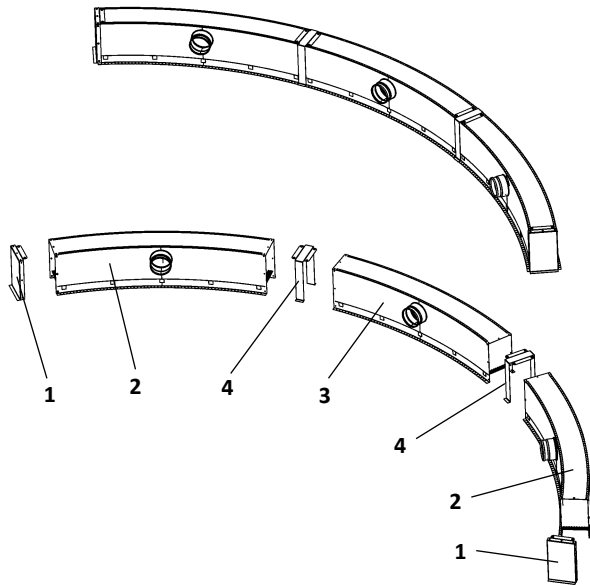
The installation of the slot diffusers DSCP / DSCPL / DSCXL is identical (see installation instructions "DSCP / DSCPL / DSCXL installation in plasterboard ceilings")

See video on YouTube:

<https://www.youtube.com/jcFsmPI0D18>



MOUNTING INSTRUCTIONS



1. Box front side
2. Plenum box band design standard
3. Plenum box band design difference piece
4. Connecting angle

LEGEND

R	=	radius
KHS	=	height of plenum box
GH	=	total height
KB	=	width of box
EÖB	=	installation opening width
T	=	depth of plasterboard ceiling
S	=	thickness of filling compound
øD	=	diameter
TS	=	section
ES	=	end piece
BoL	=	curved length of diffuser
DBoL	=	difference in curved length of diffuser
EÖBoL	=	curved length of installation opening ($EÖBoL = BoL + 5$)
BBOL	=	curved length of diffuser, band design
EÖBBOL	=	curved length of the installation opening for band design ($EÖBBOL = BBOL + 5$)
KBoL	=	curved length of the plenum box ($KBoL = BoL + 40$)
DKBoL	=	compensation curved length of the plenum box
BKBoL	=	curved length of plenum box, band design ($BKBoL = BBOL + 40$)

SLOT DIFFUSER ORDER CODE

01	02	03	04	05	06	07
Type	Model	Air throw	Frame profile	Frame surface	Blade colour	Blade position for air jet
Example						
DSCP	-2	-Z	-PL	-ALRO	-L9005	-V

08	09	10	11	12	13	14
Single / Band design	Curved length	Radius	Mounting	Ceiling depth	End piece	Dummy piece
Example						
-N	-01000	-02000	-SM	-125	-EB	-BS0

Sample

DSCP-2-Z-PL-ALRO-L9005-V-N-01000-02000-SM-125-EB-BS0

DSCP slot diffuser for plasterboard ceilings | 2-slot | Supply air | Frame profile PLASTER | Natural aluminium | Blades made of plastic material, similar to RAL 9005 (black) | Blades with vertical throw | Single design | Curved length 1000 mm | Radius 2000 mm | Screw mounting | Ceiling depth 12.5 mm | With end piece mounted ex works on both sides | Without dummy piece

ORDER DETAILS

01 - Type

DSCP = DSCP slot diffuser for plasterboard ceilings

02 - Model

1 = 1-slot
2 = 2-slot

03 - Air throw

Z = supply air (with blades)
A = return air (without blades, with perforated plate)

04 - Frame profile

PL = frame profile PLASTER

05 - Frame surface

ALRO = natural aluminium (standard).
9005 = aluminium painted to RAL colour 9005 (black).
xxxx = aluminium painted to a freely selectable RAL colour (always with 4 digits).

06 - Blade colour

L0000 = without blades (only for return air).
L9005 = blades made of plastic material (hard PVC) similar to RAL 9005 (black) (standard).
L9010 = blades made of plastic material (hard PVC) similar to RAL 9010 (white).
Lxxxx = blades made of plastic material (hard PVC), painted to a freely selectable RAL colour.

07 - Blade position for air jet

O = without blades, for return air, with perforated plate.
V = blades with vertical throw.
L = blades with horizontal one-way throw toward the inside.
R = blades with horizontal one-way throw toward the outside.
B = blades with horizontal two-way throw (standard).

08 - Single / band design

N = single design (curved length max. 1500 mm).
B = band design (curved length distribution according to SCHAKO standard lengths).

09 - Curved length

01000 = curved length 1000 mm.
01500 = curved length 1500 mm.
XXXXX = curved length in mm, freely selectable (always with 5 digits, curved length min. 400 mm / max. 1500 mm).

10 - Radius

XXXXX = specify a radius ≥ 2000 mm (e.g. 02000, always with 5 digits).

11 - Mounting

SM = screw mounting with mounting bracket.

12 - Ceiling depth

125 = ceiling depth 12.5 mm (standard).
095 = ceiling depth 9.5 mm.
xxx = ceiling depth can be freely selected (always with 3 digits).

13 - End piece

EP = with end piece with surrounding edge for plastering, mounted ex works on both sides (standard).
EB = with straight end piece, mounted ex works on both sides.
In the band design, the end piece is mounted to the left side of the section and to the right side of the difference in length.

14 - Dummy piece

BS0 = without dummy piece.
BS1 = with dummy piece made of sheet steel painted to RAL 9005 (black) (only possible without ASK-46).

PLENUM BOX ORDER CODE

01	02	03	04	05	06	07	08
Type	Diffuser	Model	Single / Band design	Curved length	Radius	Mounting of box	Material
Example							
ASK	-46	-2	-N	-01500	-02000	-OM	-SV

09	10	11	12	13	14	15
Damper	Rubber lip seal	Insulation	Height of plenum box	Spigot position	Spigot diameter	Suspension
-DK2	-GD1	-I0	-KHS	-S1	-SDS	-E0

Sample

ASK-46-2-N-01500-02000-OM-SV-DK2-GD1-I0-KHS -S1-SDS-E0

Plenum box for DSCP slot diffuser | 2-slot | Single design | Curved length 1500 mm | Radius 2000 mm | Galvanised sheet steel | With damper and cable-operated adjustment | With rubber lip seal | Without insulation | Standard height of plenum box | With inner lateral spigot | Standard spigot diameter | Without riveting nut

ORDER DETAILS

01 - Type

ASK = plenum box for slot diffuser DSCP

02 - Diffuser

46 = for DSCP

03 - Model

1 = 1-slot

2 = 2-slot

04 - Single / band design

N = single design (curved length of box max. 1540mm).

B = band design (curved length distribution according to SCHAKO standard lengths for band design).

05 - Curved length

01000 = curved length 1000 mm.

01500 = curved length 1500 mm.

xxxxx = curved length in mm, freely selectable (always with 5 digits, curved length min. 400 mm / max. 1500 mm).

06 - Radius

xxxxx = specify a radius ≥ 2000 mm (e.g. 02000, always with 5 digits).

07 - Mounting of box

OM = without diffuser mounting.

08 - Material

SV = galvanised sheet steel (standard).

09 - Damper

DK0 = without damper (standard).

DK2 = with damper and cable-operated adjustment (SZV).

10 - Rubber lip seal

GD0 = without rubber lip seal (standard).

GD1 = with rubber lip seal.

11 - Insulation

I0 = without insulation (standard).

Ia = with box insulation outside.

12 - Height of plenum box

KHS = standard height of plenum box.

xxx = height of plenum box in mm, freely selectable (minimum height = spigot diameter + 65 mm, always with 3 digits).

13 - Spigot position

S0 = spigot from above.

S1 = inner lateral spigot (standard).

S2 = outer lateral spigot.

14 - Spigot diameter

SDS = spigot diameter standard.

xxx = spigot diameter in mm, can be freely selected (always with 3 digits).

15 - Suspension

E0 = without riveting nut (standard).

SPECIFICATION TEXT

Highly inductive curved slot diffuser, free cross-section, resistance and sound power level constant in all blade positions, suitable for use in rooms with a height between 2.6 m and 4 m for direct installation in plasterboard ceilings or ceiling cavities (pressure ceilings). The special shape of the frame profile allows good installation in the plasterboard ceiling. Frame with frame profile PLASTER (-PL), made of extruded aluminium profile.

Supply air model with pivoting air deflection blades in support profile shape made of plastic material (hard PVC):

- Colour similar to RAL 9005 (black, standard) (-L9005).
- Colour similar to RAL 9010 (white) (-L9010).
- RAL colour freely selectable (-Lxxxx)

Product: SCHAKO type **DSCP-...-Z-PL-...**

Return air model without air deflection blades (-00000), with perforated plate made of sheet steel painted to RAL 9005 (black), as cover screen.

Product:: SCHAKO type **DSCP-...-A-PL-...**

Volumetric flows in m³/h per m at:	35 dB(A)	40 dB(A)
DSCP-1	131	156
DSCP-2	203	242

Model (number of slots)

- 1-slot (-1)
- 2-slot (-2)

Frame surface:

- consisting of:
 - natural aluminium (-ALRO) (standard)
 - aluminium painted to RAL colour 9005 (-9005) (black).
 - aluminium painted to a freely selectable RAL colour (-xxxx) (always with 4 digits).
- central partition (only for 2-slot models):
 - for supply air
 - for frame made of natural aluminium, same RAL colour as the blade.
 - for painted frame made of aluminium, same RAL colour as the frame.
 - for return air, made of aluminium painted to RAL 9005 (black).

Blade position for air jet:

- Without blades, for return air, with perforated plate (-0)
- With vertical throw (-V)
- With horizontal one-way throw toward the inside (-L)
- With horizontal one-way throw toward the outside (-R)
- With horizontal two-way throw (-B)

Curved length / model:

Single design (-N)

- 1000 mm (curved length of box KL = 1040 mm) (-N-01000)
- 1500 mm (curved length of box KL = 1540 mm) (-N-01500)
- Curved length in mm, can be freely selected (-N-xxxxx, always with 5 digits)

Band design (-B)

Construction subject to change
No return possible

- Curved length in mm, as band (-B-xxxxx)
(model in several parts slot diffuser BoL >1500 mm divided in curved lengths of 1000 mm or 1500 mm and a difference piece. Plenum box divided into the curved length of box KBoL=1000 mm and a difference in curved length of box DKBoL ≤1000 mm.)
With connecting pins, supplied loose (2 for each connection).

Radius:

- ≥ 2,000 mm (-XXXXX, always with 5 digits)

Mounting:

- Screw mounting with mounting bracket (-SM).

Ceiling depth of plaster board:

- 9.5 mm (-095)
- 12.5 mm (standard) (-125)
- Freely selectable (always with 3 digits) (-xxx)

End piece (-EP / -EB):

- with surrounding edge for plastering, mounted ex-works on both sides (-EP) (standard).
 - made of galvanised sheet steel.
- straight, mounted ex works on both sides (-EB).
 - made of galvanised sheet steel.

In the band design, the end piece is mounted to the left side of the section and to the right side of the difference in length.

Accessories:

- Dummy piece (-BS0 / -BS1):
 - without dummy piece (-BS0)
 - with dummy piece (-BS1)
 - made of sheet steel painted to RAL 9005 (black).
 - only possible without plenum box and hit-and-miss damper.
 - fastening clips for mounting on the slot diffuser.
- Plenum box (-ASK-46), for 1-slot (-1) or 2-slot (-2) models, made of galvanised sheet steel (-SV), with fixing lugs, without riveting nut (-E0).
 - Single / band design:
 - Single design (-N, curved length of box max. 1540 mm).
 - Band design (-B, curved length distribution according to SCHAKO standard lengths for band design).
 - Curved length:
 - 1000 mm (-01000).
 - 1500 mm (-01500).
 - Curved length in mm, can be freely selected (-xxxxx, always with 5 digits).
 - Mounting of box:
 - Without diffuser mounting (-OM) (standard).
 - Damper:
 - Without damper (-DK0).
 - With damper and cable-operated adjustment (-DK2), made of galvanised sheet steel, in the connection spigot, adjustable, for simple air volume regulation.

- Rubber lip seal:
 - Without rubber lip seal (-GD0).
 - With rubber lip seal (-GD1) made of special rubber, at the connection spigot.
- Insulation:
 - Without insulation (-I0).
 - With box insulation outside (-Ia), thermal insulation at the outside of the plenum box.
- Height of plenum box:
 - Standard height of plenum box (-KHS).
 - Height of box in mm, freely selectable (-xxx) (minimum height = spigot diameter + 65 mm, always with 3 digits).
- Spigot position:
 - Spigot from above (-S0).
 - Inner lateral spigot (-S1, standard).
 - Outer lateral spigot (-S2).
- Spigot diameter:
 - Standard spigot diameter (-SDS).
 - Spigot diameter in mm, can be freely selected (-xxx).