

DSC

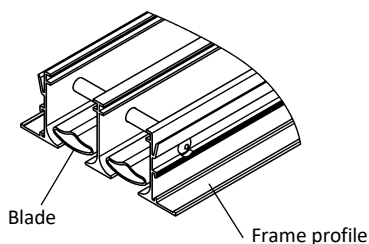
Slot diffuser

Contents

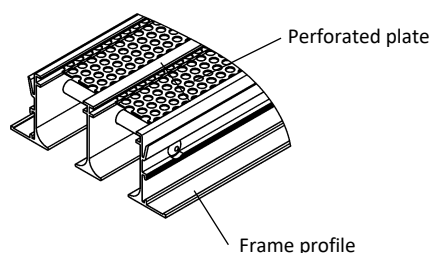
Overview of product versions.....	2
Function and use	2
Models.....	3
Mounting.....	3
Blade position for air jet	4
Processing.....	5
Accessories	5
Dimensions of frame profile	7
Dimensions of accessories.....	8
Plenum box in band design.....	21
Fastening methods	23
Screw mounting (-SM)	25
Mounting with counter pole brace (-GT).....	26
Mounting with clamp strap (-KB).....	27
Installation.....	27
Technical data.....	28
Legend	33
Slot diffuser order code	34
Plenum box order code	36
Order code corner angle.....	37
Specification text	38

OVERVIEW OF PRODUCT VERSIONS

DSC-...-Z-... (supply air)



DSC-...-A-... (return air)



FUNCTION AND USE

The slot diffuser type DSC is suitable for use in rooms with a height between 2.6 and 4 m. The air deflection blades adjustable from below allow a versatile application. The outflow direction can be adjusted from a vertical throw in heating mode to a horizontal throw in cooling mode. In cooling mode, a one- or two-way air throw pattern or a multi-direction throw pattern can be set. The support profile section blades create such a stable jet that, for the two-way air throw or multi-direction air throw, just one blade has to be set alternately in one throw direction. This achieves high induction while the velocity and temperature difference of the supply air jet are effectively reduced. Due to the central housing of the support profile blades, the free cross-section is always the same size. Pressure loss and sound power level remain therefore constant even when the blades are adjusted. A subsequent change of the air throw direction on site is possible at any time, even when the diffuser has already been fitted. If the desired air throw is specified in the order, it will be set at the factory. Unless stated otherwise, the blade position -D (multi-direction throw) will be set. The large free cross-section allows a high volumetric flow compared with other slot diffusers. The stable air jet and high induction mean that the DSC slot diffuser can be used in cooling mode up to $\Delta T_0 \leq -12$ K.

The resistance created by the blades ensures that the supply air is distributed equally across the whole length of the slot diffuser.

The slot diffuser can be manufactured as 1-, 2-, 3- or 4-slot model and is available either as single piece or in band design. Accessories such as end pieces and corner angles enable a versatile use of the slot diffuser. The slot diffuser can be integrated into different ceiling types and also into air-handling lights by using various additional profiles.

The return air model is fitted with a black perforated plate for easy cleaning from below through the slots instead of air deflection blades.

The connection to the ductwork is done via the plenum box. At an extra charge, a damper adjustable from below can be installed in the connection spigot for air volume regulation. The plenum box can also be insulated either internally or externally. If there is not enough space in the intermediate ceiling area, the slot diffuser, fitted with a hit-and-miss damper for volume regulation, can be installed directly in the ductwork.

Due to the stable air throw pattern, it can also be used in VAV systems from 100 to 40%.

MODELS

DSC-1-...	1-slot
DSC-2-...	2-slot
DSC-3-...	3-slot
DSC-4-...	4-slot
DSC-...-Z	Supply air (with blades)
DSC-...-A	Return air (without blades)
DSC-...-R0	With frame profile STANDARD (frame with R0 standard profile)
DSC-...-S0	With narrow frame profile (frame with S0 profile)
DSC-...-P0	With special frame profile (frame with P0 profile)
DSC-...-V	Blades with vertical throw
DSC-...-L	Blades one-way horizontal throw left
DSC-...-R	Blades one-way horizontal throw right
DSC-...-B	Blades two-way horizontal throw
DSC-...-D	Blades horizontal diverging throw (multi- direction throw) (standard)
DSC-...-0	Without blades, with perforated plate (for return air)
DSC-...-N	Single design (length max. 1500 mm).
DSC-...-B	Band design (available lengths according to SCHAKO standard for band design)

MOUNTING

Without connection (-00)

- Only possible without plenum box and without hit-and-miss damper.

Permanent connection with plenum box (-FV, standard)

- Only possible with plenum box.
- As standard for the models DSC-R0, DSC-S0 and DSC-P0.
- The slot diffuser is permanently connected to the plenum box.

Concealed mounting with plenum box (-VM)

- Only possible with plenum box.
- Possible for the models DSC-R0 / DSC-P0 and DSC-S0-Z2 (with additional profile).
- Not possible for the models DSC-S0-Z0 / DSC-S0-Z1 / DSC-S0-Z3.
- The slot diffuser is screwed to the pole brace in the plenum box housing with concealed screws.
- Frame with foam gasket.
- Plenum box supplied loose from the factory.

Mounting with counter pole brace (-GT)

- Only possible without plenum box.
- Screws and counter pole brace are supplied loose (2 pieces).
- Pole brace traps consisting of folded galvanised sheet steel and pole brace made of extruded aluminium profile with DIN thread.
- Possible for the models DSC-R0 / DSC-P0 and DSC-S0-Z2 (with additional profile).
- Not possible for the models DSC-S0-Z0 / DSC-S0-Z1 / DSC-S0-Z3.
- The slot diffuser is screwed to the counter pole brace (pole brace strap) with concealed screws (included in delivery).
- **For mounting, access on the rear is required!**

Mounting with clamp strap (-KB)

- Only possible without plenum box.
- Screws and clamp straps are supplied loose (2 pieces).
- Clamp strap made of galvanised sheet steel.
- Possible for the models DSC-R0 / DSC-P0 and DSC-S0-Z2 (with additional profile).
- Not possible for the models DSC-S0-Z0 / DSC-S0-Z1 / DSC-S0-Z3.
- The slot diffuser is screwed to the clamp strap with concealed screws (included in delivery).
- **For mounting, access on the rear is not required!**

Screw mounting (-SM)

- Only possible without plenum box.
- Screws must be provided on-site.
- Possible for the models DSC-R0 and DSC-P0.
- Not possible for the model DSC-S0.
- The slot diffuser is fixed with visible screws.

Mounting with suspension lugs (-AL)

- Only possible without plenum box.
- 4 pieces supplied loose.
- Possible for the models DSC-R0 and DSC-P0.
- Not possible for the model DSC-S0.
- The slot diffuser is fastened to 4 suspension brackets.
- Suspension lug made of galvanised sheet steel, with holes for hook mounting.

Fishplate (-VL)

- 4 pieces, supplied loose.
- made of aluminium sheet.
- Only for connection of the corner angle to the slot diffuser in band design.
- The corner angle is fixed with the help of the fishplates (2 on each side).

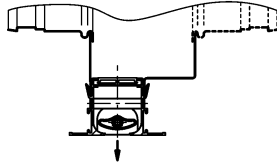
BLADE POSITION FOR AIR JET

Blade position (-V)

vertical throw

max. volumetric flow 1-slot: **30 m³/h m [8.3 l/s m]**

Minimum distance between two diffuser rows: **1.0 m**

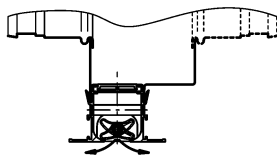


Blade position (-B)

with horizontal two-way throw

max. volumetric flow 1-slot: **80 m³/h m [22.2 l/s m]**

Minimum distance between two diffuser rows: **2.5 m**

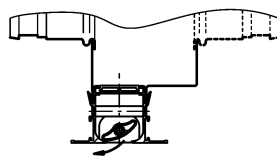


Blade position (-L)

one-way horizontal left throw

max. volumetric flow 1-slot: **60 m³/h m [16.7 l/s m]**

Minimum distance between two diffuser rows: **3.5 m**

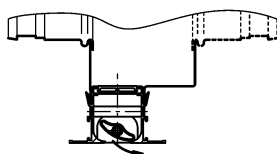


Blade position (-R)

one-way horizontal right throw

max. volumetric flow 1-slot: **60 m³/h m [16.7 l/s m]**

Minimum distance between two diffuser rows: **3.5 m**

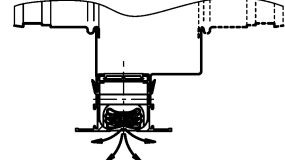


Blade position (-D)

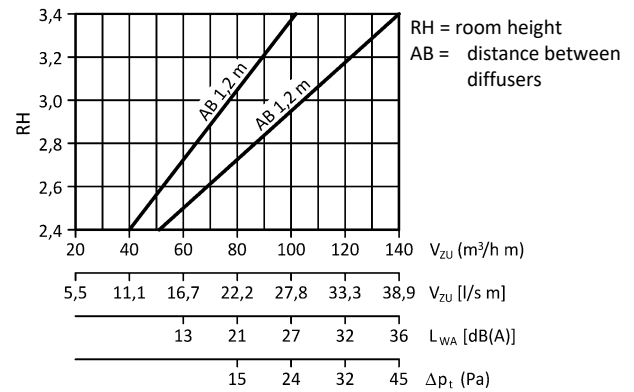
with horizontal diverging throw (multi-direction throw)

max. volumetric flow 1-slot: **100 m³/h m [27.8 l/s m]**

Minimum distance between two diffuser rows: **2.5 m**



QUICK SELECTION BLADE POSITION D



PROCESSING

Frame surface

- Natural colour anodised aluminium (-ELOX, standard).
- Aluminium:
 - painted to RAL colour 9006 (white aluminium) (-9006).
 - painted to the colour RAL 9010 (white) (-9010).
 - painted to a freely selectable RAL colour (at an extra charge, always with 4 digits) (-xxxx).

Blade colour

- Plastic (hard PVC):
 - Colour similar to RAL 9005 (black, standard) (-L9005).
 - Colour similar to RAL 9006 (white aluminium) (-L9006).
 - Colour similar to RAL 9010 (white) (-L9010).
 - painted to a freely selectable RAL colour (-Lxxxx).
- For return air, without blade (-00000), with perforated plate made of sheet steel painted to RAL 9005 (black), as cover screen.

Perforated plate

- for return air, sheet steel RAL 9005 (black).

Blade holding device

- Aluminium ducts

Internal blade divider (standard)

- Plastic (PA type 6):
 - for supply air painted to blade colour.
 - for return air painted to RAL 9005 (black).

Internal blade divider (support for concealed mounting)

- Plastic (PA type 6):
 - for supply air painted to blade colour.
 - for return air painted to RAL 9005 (black).

External blade plates (end plates)

- Plastic (ABS):
 - for supply air painted to blade colour.
 - for return air painted to RAL 9005 (black).

Connecting pin

Connection diffuser - diffuser

- made of plastic material.
- for band design only.
- supplied loose (2x for each connection).

ACCESSORIES

End pieces (-E0 / -ES / -EB / -EL / -ER)

- Without end pieces (-E0) (standard).
 - with end pieces:
 - Supplied loose (-ES, pair) (standard).
 - Mounted ex works on both sides (-EB).
 - Mounted ex works on the left side (-EL).
 - Mounted ex works on the right side (-ER).
- Made of aluminium (same colour as frame).

Additional profile (-Z0 / -Z1 / -Z2 / -Z3)

- Without additional profile (-Z0) (standard).
 - With additional profile (only possible for DSC-S0):
 - Z I (-Z1): connection of ceiling panels.
 - Z II (-Z2): connection of panelled ceilings.
 - Z III (-Z3): connection of ceiling panels.
- Made of aluminium (same colour as frame).

Dummy piece (-BS0 / -BS1)

- without dummy piece (-BS0) (standard).
- with dummy piece (-BS1):
 - made of sheet steel painted to RAL 9005 (black).
 - only possible without plenum box and hit-and-miss damper.
 - Mounting only possible with suspension lugs (-AL, standard in connection with active diffuser DSC-...-FV-...), counter pole brace (-GT) or clamp strap (-KB).

Hit-and-miss damper (-SN / -SS)

- without hit-and-miss damper (-SN) (standard).
- with hit-and-miss damper (-SS).
Made of electrolytically galvanised sheet steel, only possible without plenum box. (Mounting for DSC-R0 and DSC-P0: with screw mounting [-SM, standard] and with counter pole brace [-GT] / mounting for DSC-S0: with counter pole brace [-GT] and only with additional profile -Z2.)

Plenum box (-ASK-24)

- Model (number of slots):
 - 1-slot (-1)
 - 2-slot (-2)
 - 3-slot (-3)
 - 4-slot (-4)
- Single / band design:
 - Single design (-N, length of box max. 1500 mm).
 - Band design (-B, available lengths according to SCHAKO standard for band design).
- Length:
 - 1000 mm (-01000)
 - 1500 mm (-01500)
 - Length in mm, freely selectable (-xxxxx, always with 5 digits).
 - (length min. 400 mm / max. 1500 mm).
- Mounting of box:
 - Permanent connection (-FV) (standard).
 - Concealed mounting (-VM) (only possible for the models DSC-R0, DSC-P0 and DSC-S0-Z2).
 - without fastening (only possible without diffuser) (-00).
- Material:
 - Galvanised sheet steel (-SV) (standard).

- Damper:
 - Without damper (-DK0) (standard).
 - With damper made of galvanised sheet steel, adjustable, for simple air volume regulation:
 - In the plenum box housing (with lateral spigot position S1 and S2) (-DK1).
 - In the connection spigot, with cable-operated adjustment (with spigot position from above S0) (-DK2).
- Rubber lip seal:
 - Without rubber lip seal (-GD0)
 - With rubber lip seal (-GD1) made of special rubber, at the connection spigot.
- Insulation:
 - Without insulation (-I0)
 - with internal insulation (-Ii), thermal insulation inside the plenum box.
 - with external insulation (-Ia), thermal insulation at the outside of the plenum box.
- Height of plenum box:
 - Standard height of plenum box (-KHS).
 - Height of plenum box in mm, freely selectable (-xxx) (minimum height [GH] with spigot position S1+S2 = spigot diameter $\varnothing D + 82$ mm / with spigot position S0 = 180 mm, always with 3 digits)
- Box neck:
 - Standard box neck (-KVS)
 - Box neck in mm, freely selectable (-xxx) (from > 45 mm to 200 mm possible, always with 3 digits).

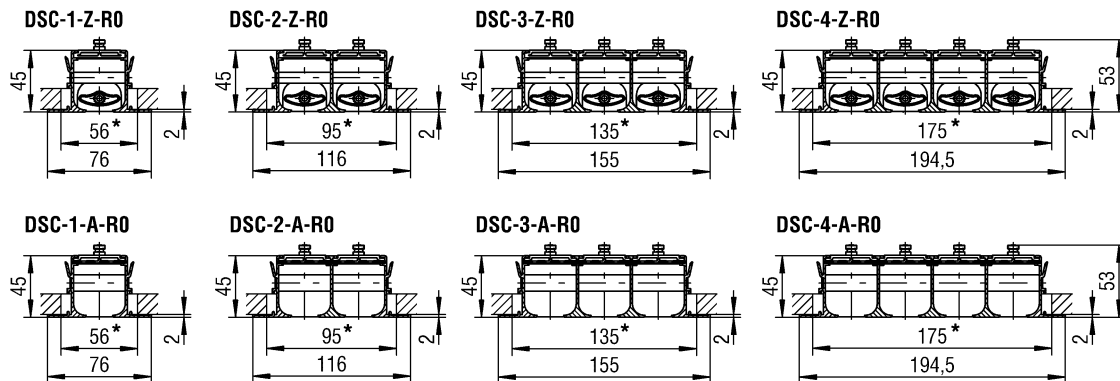
Can only be used with 1-slot models, 2-, 3- and 4-slot models don't have a box neck.
- Spigot position:
 - Spigot from above (-S0).
 - Lateral spigot (-S1) (standard).
 - Lateral spigot located on the opposite side (-S2) (only possible for 1-slot models)
- Spigot diameter:
 - Standard spigot diameter (-SDS).
 - Spigot diameter in mm, freely selectable (-xxx, always with 3 digits).
- Suspension:
 - Without riveting nut (-E0).
 - With riveting nut (-EM), made of brass.
- with air diffuser plate (FQ = 46%), made of galvanised sheet steel, only for models with spigot from above.

Corner angle (-EW-24)

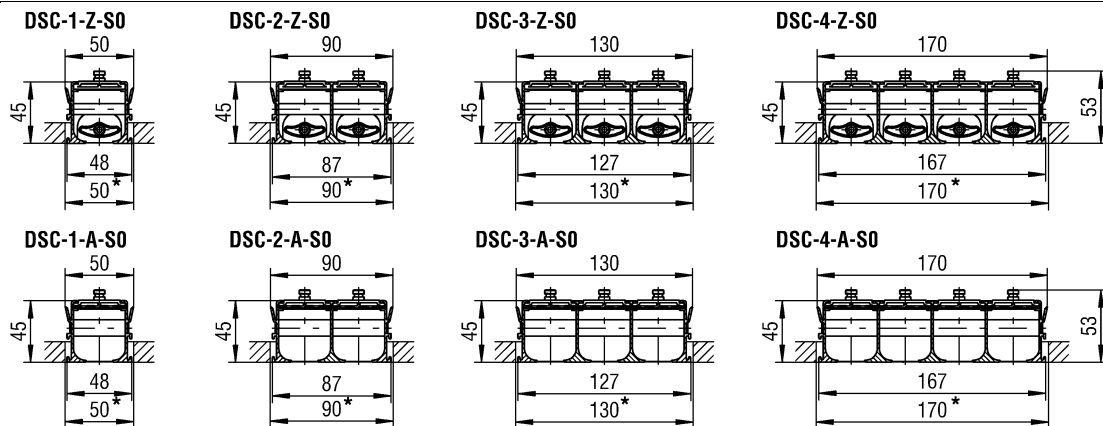
- Model (number of slots):
 - 1-slot (-1)
 - 2-slot (-2)
 - 3-slot (-3)
 - 4-slot (-4)
- Frame profile:
 - Standard (-R0).
 - Narrow frame profile (-S0).
 - Special frame profile (-P0).
- Frame surface:
 - Natural colour anodised aluminium (-ELOX, standard).
 - Aluminium:
 - painted to RAL colour 9006 (white aluminium) (-9006).
 - painted to the colour RAL 9010 (white) (-9010).
 - painted to a freely selectable RAL colour (at an extra charge, always with 4 digits) (-xxxx).
- Dummy profile colour:
 - Aluminium painted similar to RAL colour 9005 (black) (-B9005) (standard).
 - Aluminium painted similar to RAL colour 9006 (white aluminium) (-B9006).
 - Aluminium painted similar to RAL colour 9010 (white) (-B9010).
 - Aluminium painted to a freely selectable RAL colour (Bxxxx) (always with 5 digits).
- Angle between sides:
 - 90° (-090) (standard).
 - Angle as required (-xxx), values between $\alpha = 90^\circ$ (-090, standard) and 170° (-170) are possible.
- Including 4 fishplates (-VL, included in delivery) made of aluminium (same colour as frame), supplied loose.
- Additional profile:
 - Without additional profile (-Z0).
- Mounting with suspension lugs (-AL), supplied loose.

DIMENSIONS OF FRAME PROFILE

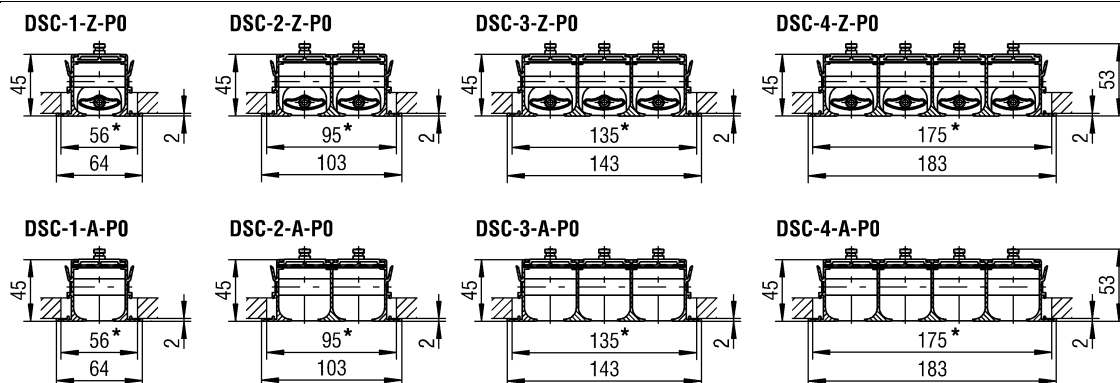
Standard frame profile "R0"



Narrow frame profile "S0"



Special frame profile "P0"



In the return air model, a perforated plate is mounted instead of the air deflection blades.

* EÖB = installation opening width

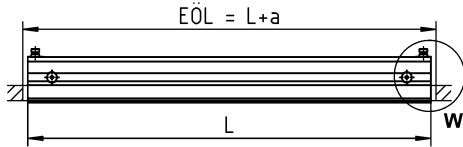
EÖL = installation opening length

For the available lengths of the slot diffuser, see page 8.

Available lengths for the slot diffuser

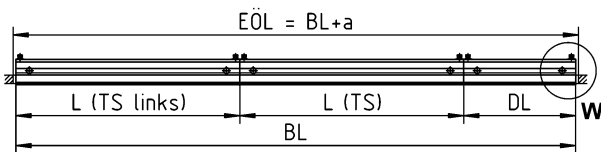
Single design (-N)

- Length L= 1000 mm (-01000-N)
- Length L= 1500 mm (-01500-N)
- Length in mm, freely selectable (-xxxxx-N)
(Length L ≥ 400 mm to ≤ 1500 mm can be fitted with plenum box, dummy piece possible from length 200 mm.)



Band design (-B)

- Length in mm, can be freely selected, as band (-xxxxx-B)
(Available lengths according to SCHAKO standard)



Available lengths according to SCHAKO standard:

When the slot diffuser type DSC is designed as a band, the total length BL is assembled from lengths (sections) of **1000 mm or 1500 mm**. The difference pieces DL are supplied in lengths **≥ 400 mm to < 1500 mm**. The difference pieces from **≥ 200 mm to < 400 mm** are supplied as dummy pieces without plenum box.

	a
DSC-...-R0	10
DSC-...-P0	15
DSC-...-S0	15

For detail W, see page 19.

EÖL = installation opening length
 DL = difference in length
 TS = section
 Left TS = left section
 L = length
 BL = band length

DIMENSIONS OF ACCESSORIES

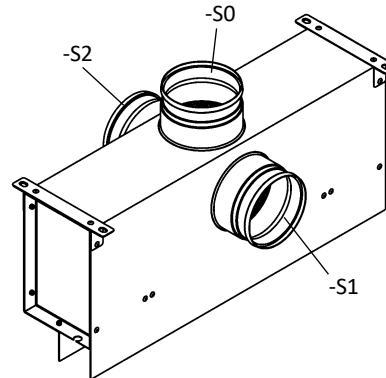
Plenum box (-ASK-24)

Spigot position

S0 = spigot from above

S1 = Lateral spigot (standard)

S2 = lateral spigot located on the opposite side (only possible for 1-slot models)



Plenum box (-ASK-24-...-FV-S1/S2)

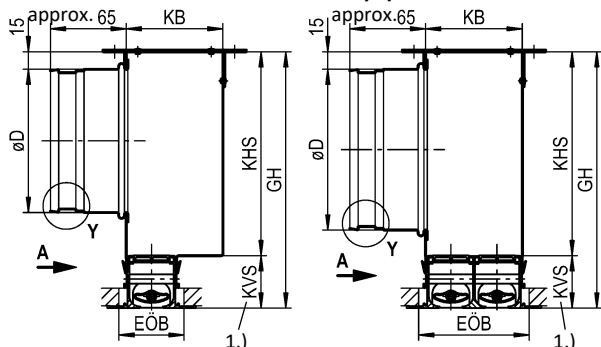
With fixed connection. With lateral spigot.

Standard for the models DSC-R0, DSC-S0 and DSC-P0. The slot diffuser is permanently connected to the plenum box.

With lateral spigot (-S1, standard)

DSC-1-...-ASK-24-...-FV-S1

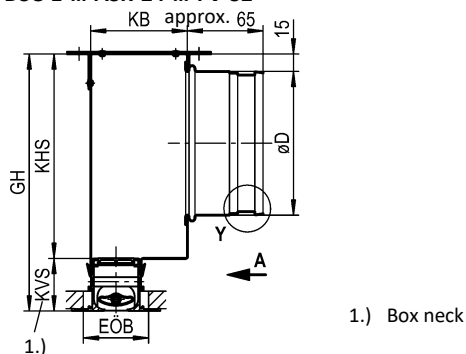
DSC-2/3/4-...-ASK-24-...-FV-S1



With lateral spigot located on the opposite side (-S2)

(only possible for DSC-1-...)

DSC-1-...-ASK-24-...-FV-S2



Available plenum box sizes (ASK-24-...-FV-S1/S2)

	KB	GH	KHS	KVS	EOB	a
					...-R0 ...-P0	...-S0
DSC-1	83	220	175	45	56	50
DSC-2	83	220	175	45	95	90
DSC-3	122	220	175	45	135	130
DSC-4	162	280	235	45	175	170

Number of connection spigots

	ØD	
	L ≤ 1000	L > 1000 to L ≤ 1500
DSC-1	1 x Ø98	1 x Ø123
DSC-2	1 x Ø138	1 x Ø138
DSC-3	1 x Ø138	2 x Ø138
DSC-4	1 x Ø158	2 x Ø138

L	KL	EOB	EOB	Weight incl. plenum box (kg)			
		...-R0	...-P0 ...-S0	DSC-1	DSC-2	DSC-3	DSC-4
1000	997	1010	1015	5.5	6.0	7.0	9.0
1500	1497	1510	1515	8.0	8.5	10.0	12.5

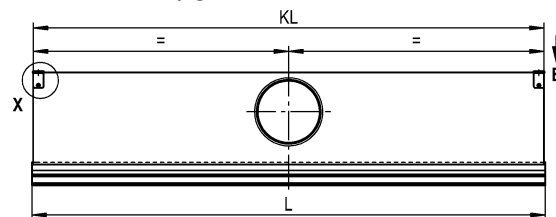
Available lengths plenum box (-ASK-24-...)

SINGLE DESIGN (-N)

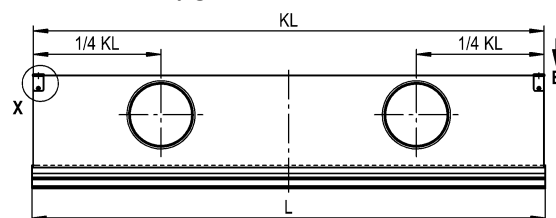
- Length L = 1000 mm (-01000-N)
Length of box KL = L-3 = 997 mm
- Length L = 1500 mm (-01500-N)
Length of box KL = L-3 = 1497 mm
- Length in mm, freely selectable (-xxxxx-N)
(length of plenum box ≥ 400 mm to ≤ 1500 mm)

Lateral spigot position (-S1) / lateral on the opposite side (-S2):

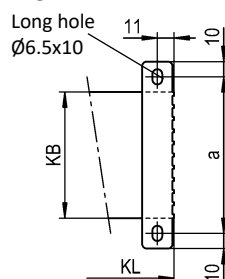
View A / with 1 spigot



View A / with 2 spigots



View B



For diffuser mounting, detail X, see page 15.

For rubber lip seal, detail Y, see page 13.

For fastening detail, see page 23.

For the band design, see page 21.

EOB = installation opening width

EOL = installation opening length

Plenum box height reduction (at an extra charge)

- with spigot position -S1 / -S2:
Minimum height [GH] = spigot diameter ØD + 82 mm

Box neck extension

- Box neck standard (-KVS) 45 mm.
- Box neck extension in mm, freely selectable (-xxx, always with 3 digits, available from >45 mm to 200 mm).

Spigot diameter:

- Standard spigot diameter (-SDS).
- Spigot diameter in mm, freely selectable (-xxx, always with 3 digits).

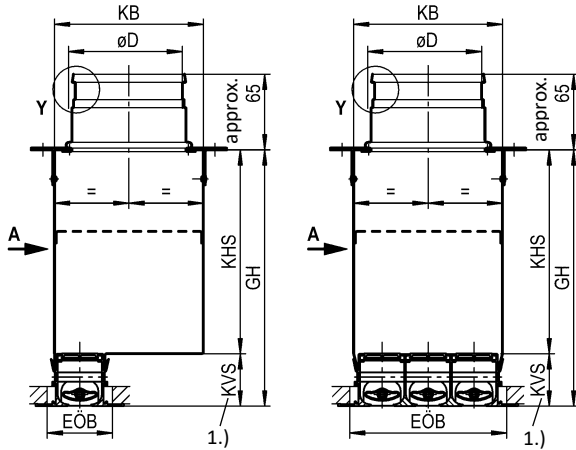
Intermediate lengths and other spigot diameters on request.

Plenum box (-ASK-24-...-FV-S0)

With fixed connection. With spigot from above.
Standard for the models DSC-R0 / DSC-S0 and DSC-P0. The slot diffuser is permanently connected to the plenum box.

With spigot from above (-S0)

DSC-1/2-...-ASK-24-...-FV-S0 DSC-3/4-...-ASK-24-...-FV-S0



1.) Box neck

Available plenum box sizes (ASK-24-...-FV-S0)

	KB	GH	KHS	KVS	EÖB	a
					...-R0 ...-P0	...-S0
DSC-1	128	220	175	45	56	50
DSC-2	128	220	175	45	95	90
DSC-3	128	220	175	45	135	130
DSC-4	168	280	235	45	175	170

Number of connection spigots

	øD	
	L ≤ 1000	L > 1000 to L ≤ 1500
DSC-1	1 x ø98	2 x ø98
DSC-2	2 x ø98	2 x ø98
DSC-3	2 x ø98	4 x ø98
DSC-4	2 x ø123	2 x ø138

L	KL	EÖL	Weight incl. plenum box (kg)			
		...-R0 ...-P0	...-S0	DSC-1	DSC-2	DSC-3
1000	997	1010	1015	5.5	6.0	7.0
1500	1497	1510	1515	8.0	8.5	10.0

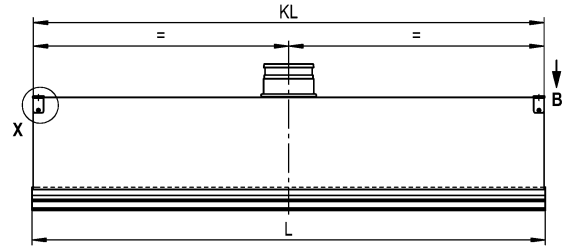
Available lengths plenum box (-ASK-24-...)

SINGLE DESIGN (-N)

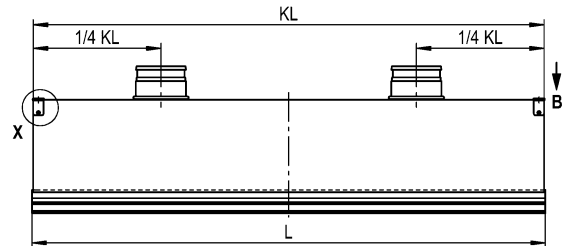
- Length L = 1000 mm (-01000-N)
Length of box KL = L-3 = 997 mm
- Length L = 1500 mm (-01500-N)
Length of box KL = L-3 = 1497 mm
- Length in mm, freely selectable (-xxxxx-N)
(length of plenum box ≥ 400 mm to ≤ 1500 mm)

Spigot position from above (-S0):

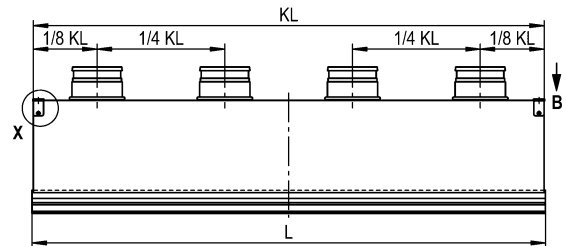
View A / with 1 spigot



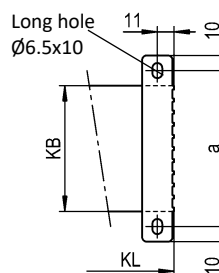
View A / with 2 spigots



View A / with 4 spigots



View B



For diffuser mounting, detail X, see page 15.
For rubber lip seal, detail Y, see page 13.
For fastening detail, see page 23.
For the band design, see page 21.
EÖB = installation opening width
EÖL = installation opening length

Plenum box height reduction (at an extra charge)

- With spigot position -S0:
With spigot position -S0, the height of plenum box GH can be reduced to 180 mm.

Box neck extension

- Box neck standard (-KVS) 45 mm.
- Box neck extension in mm, freely selectable (-xxx, always with 3 digits, available from >45 mm to 200 mm).

Spigot diameter:

- Standard spigot diameter (-SDS).
- Spigot diameter in mm, freely selectable (-xxx, always with 3 digits).

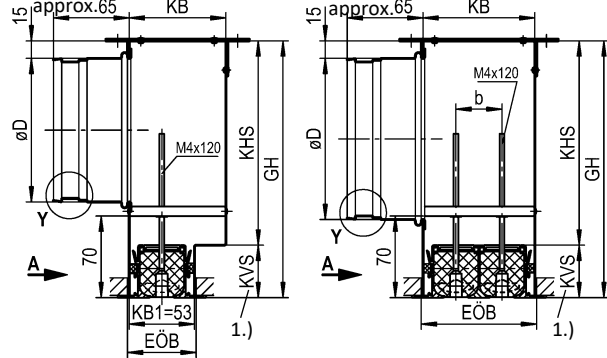
Intermediate lengths and other spigot diameters on request.

Plenum box (-ASK-24-...-VM-S1/S2)

With concealed mounting. With lateral spigot.
Possible for the models DSC-R0 / DSC-P0 and DSC-S0- Z2 (with additional profile). Not possible for the models DSC-S0-Z0 / DSC-S0-Z1 / -Z3. The slot diffuser is screwed to the pole brace in the plenum box housing with concealed screws.

With lateral spigot (-S1, standard)

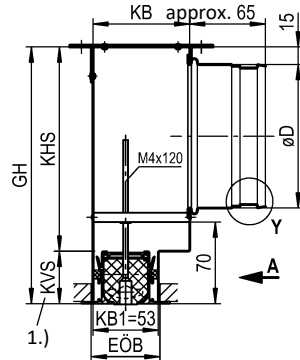
DSC-1-...-ASK-24-...-VM-S1 DSC-2/3/4-...-ASK-24-...-VM-S1



With lateral spigot located on the opposite side (-S2)

(only possible for DSC-1-...)

DSC-1-...-ASK-24-...-VM-S2



1.) Box neck

Attention:
The max. torque of the fastening screw is 0.5 Nm.

Available plenum box sizes (ASK-24-...-VM-S1/S2)

	KB	GH	KHS	KVS	EÖB	a	b
					...-R0 ...-P0		
DSC-1	83	220	175	45	56	103	-
DSC-2	93	220	175	45	96	113	40
DSC-3	133	220	175	45	136	153	79
DSC-4	173	280	235	45	176	193	119

Number of connection spigots

	øD	
	L ≤ 1000	L > 1000 to L ≤ 1500
DSC-1	1 x ø98	1 x ø123
DSC-2	1 x ø138	1 x ø138
DSC-3	1 x ø138	2 x ø138
DSC-4	1 x ø158	2 x ø138

L	KL	EÖL		Weight incl. plenum box (kg)			
		...-R0	...-P0 ...-S0	DSC-1	DSC-2	DSC-3	DSC-4
1000	997	1010	1015	5.5	6.0	7.0	9.0
1500	1497	1510	1515	8.0	8.5	10.0	12.5

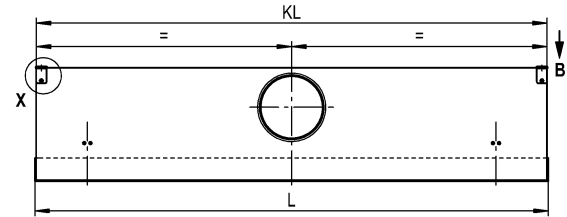
Available lengths plenum box (-ASK-24-...)

SINGLE DESIGN (-N)

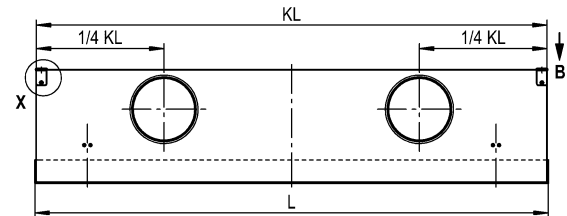
- Length L = 1000 mm (-01000-N)
Length of box KL = L-3 = 997 mm
- Length L = 1500 mm (-01500-N)
Length of box KL = L-3 = 1497 mm
- Length in mm, freely selectable (-xxxxx-N)
(length of plenum box ≥ 400 mm to ≤ 1500 mm)

Lateral spigot position (-S1) / lateral on the opposite side (-S2):

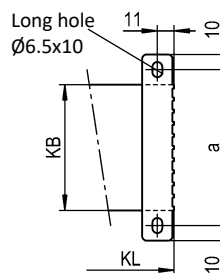
View A / with 1 spigot



View A / with 2 spigots



View B



For diffuser mounting, detail X, see page 15.
For rubber lip seal, detail Y, see page 13.
For fastening detail, see page 23.
For the band design, see page 21.
EÖB = installation opening width
EÖL = installation opening length

Plenum box height reduction (at an extra charge)

- with spigot position -S1 / -S2:
Minimum height [GH] = spigot diameter øD + 82 mm

Box neck extension

- Box neck standard (-KVS) 45 mm.
- Box neck extension in mm, freely selectable (-xxx, always with 3 digits, available from >45 mm to 200 mm).

Spigot diameter:

- Standard spigot diameter (-SDS).
- Spigot diameter in mm, freely selectable (-xxx, always with 3 digits).

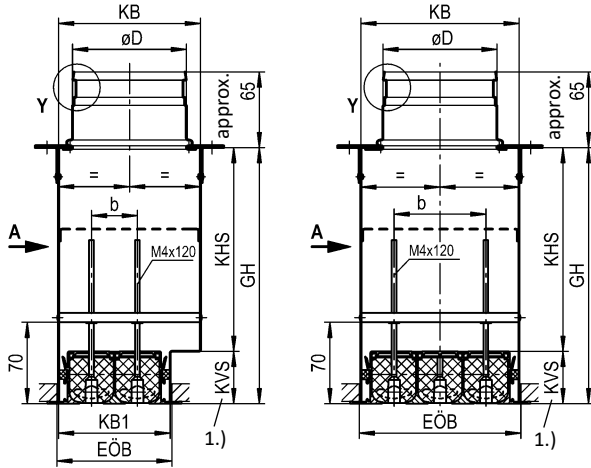
Intermediate lengths and other spigot diameters on request.

Plenum box (-ASK-24-...-VM-S0)

With concealed mounting. With spigot from above.
Possible for the models DSC-R0 / DSC-P0 and DSC-S0- Z2 (with additional profile). Not possible for the models DSC-S0-Z0 / DSC-S0-Z1 / -Z3. The slot diffuser is screwed to the pole brace in the plenum box housing with concealed screws.

With spigot from above (-S0)

DSC-1/2-...-ASK-24-...-VM-S0 DSC-3/4-...-ASK-24-...-VM-S0



1.) Box neck

Attention: The max. torque of the fastening screw is 0.5 Nm.

Available plenum box sizes (ASK-24-...-VM-S0)

	KB	KB1	GH	KHS	KVS	EÖB ...-R0 ...-P0	a	b
DSC-1	128	53	220	175	45	56	148	-
DSC-2	128	93	220	175	45	96	148	40
DSC-3	133	-	220	175	45	136	153	79
DSC-4	173	-	280	235	45	176	193	119

Number of connection spigots

	øD	
	L ≤ 1000	L > 1000 to L ≤ 1500
DSC-1	1 x ø98	2 x ø98
DSC-2	2 x ø98	2 x ø98
DSC-3	2 x ø98	4 x ø98
DSC-4	2 x ø123	2 x ø138

L	KL	EÖL		Weight incl. plenum box (kg)			
		...-R0	...-P0	DSC-1	DSC-2	DSC-3	DSC-4
1000	997	1010	1015	5.5	6.0	7.0	9.0
1500	1497	1510	1515	8.0	8.5	10.0	12.5

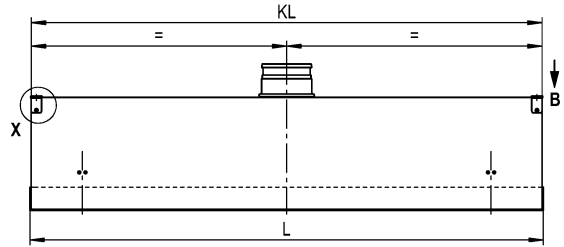
Available lengths plenum box (-ASK-24-...)

SINGLE DESIGN (-N)

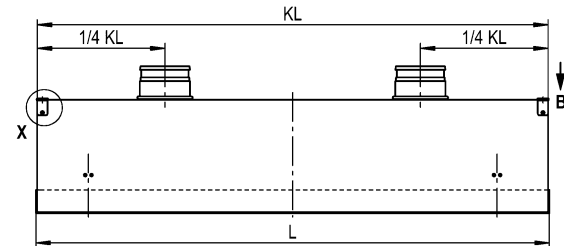
- Length L = 1000 mm (-01000-N)
Length of box KL = L-3 = 997 mm
- Length L = 1500 mm (-01500-N)
Length of box KL = L-3 = 1497 mm
- Length in mm, freely selectable (-xxxxx-N)
(length of plenum box ≥ 400 mm to ≤ 1500 mm)

Spigot position from above (-S0):

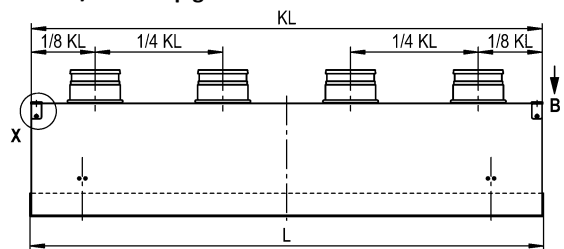
View A / with 1 spigot



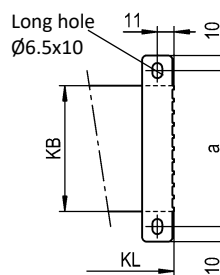
View A / with 2 spigots



View A / with 4 spigots



View B



For diffuser mounting, detail X, see page 15.
For rubber lip seal, detail Y, see page 13.
For fastening detail, see page 23.
For the band design, see page 21.
EÖB = installation opening width
EÖL = installation opening length

Plenum box height reduction (at an extra charge)

- With spigot position -S0:
With spigot position -S0, the height of plenum box GH can be reduced to 180 mm.

Box neck extension

- Box neck standard (-KVS) 45 mm.
- Box neck extension in mm, freely selectable (-xxx, always with 3 digits, available from >45 mm to 200 mm).

Spigot diameter:

- Standard spigot diameter (-SDS).
- Spigot diameter in mm, freely selectable (-xxx, always with 3 digits).

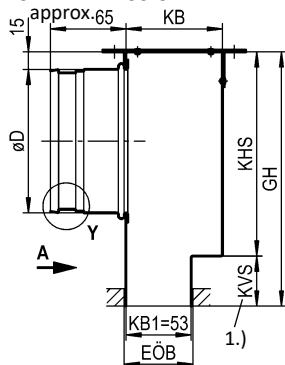
Intermediate lengths and other spigot diameters on request.

Plenum box (ASK-24-...-00-S1/S2)

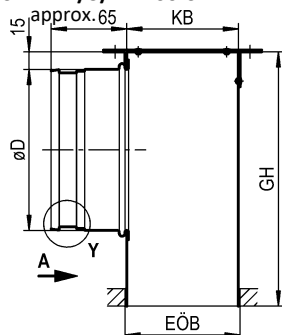
Without fastening, only possible without diffuser. With lateral spigot.

With lateral spigot (-S1, standard)

ASK-24-1-...-00-S1



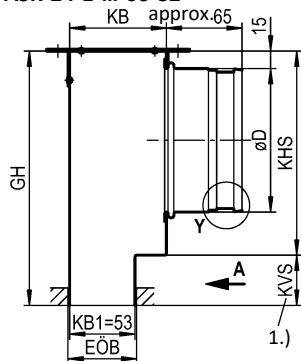
ASK-24-2/3/4-...-00-S1



With lateral spigot located on the opposite side (-S2)

(only possible for ASK-24-1-...)

ASK-24-1-...-00-S2



1.) Box neck

Available plenum box sizes (ASK-24-...-00-S1/S2)

	KB	KB1	GH	KHS	KVS	EÖB ...-R0 ...-P0	a
DSC-1	83	53	218	175	43	56	103
DSC-2	93	-	218	175	43	96	113
DSC-3	133	-	218	175	43	136	153
DSC-4	173	-	278	235	43	176	193

Number of connection spigots

	ØD	
	L ≤ 1000 (KL ≤ 997)	L > 1000 to L ≤ 1500 (KL > 997 to KL ≤ 1497)
DSC-1	1 x Ø98	1 x Ø123
DSC-2	1 x Ø138	1 x Ø138
DSC-3	1 x Ø138	2 x Ø138
DSC-4	1 x Ø158	2 x Ø138

L	KL	EÖL	
		...-R0	...-P0 ...-S0
1000	997	1010	1015
1500	1497	1510	1515

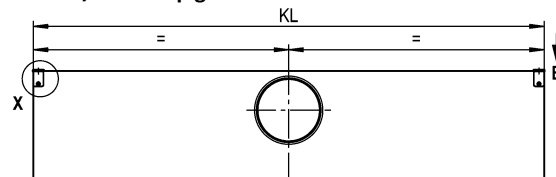
Available lengths plenum box (-ASK-24-...)

SINGLE DESIGN (-N)

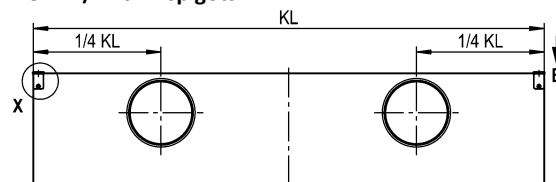
- Length L= 1000 mm (-01000-N) →
Length of box KL = L-3 = 997 mm
- Length L= 1500 mm (-01500-N) →
Length of box KL = L-3 = 1497 mm
- Length in mm, freely selectable (-xxxxx-N)
(length of plenum box ≥ 400 mm to ≤ 1500 mm)

Lateral spigot position (-S1) / lateral on the opposite side (-S2):

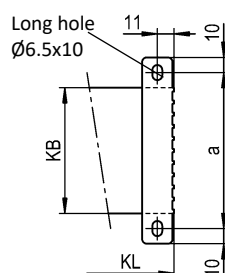
View A / with 1 spigot



View A / with 2 spigots



View B



For diffuser mounting, detail X, see page 15.
For rubber lip seal, detail Y, see page 13.
For fastening detail, see page 23.
For the band design, see page 21.
EÖB = installation opening width
EÖL = installation opening length

Plenum box height reduction (at an extra charge)

- with spigot position -S1 / -S2:
Minimum height [GH] = spigot diameter ϕD + 80 mm

Box neck extension

- Box neck standard (-KVS) 43 mm.
- Box neck extension in mm, freely selectable (-xxx, always with 3 digits, available from >43 mm to 200 mm).

Spigot diameter:

- Standard spigot diameter (-SDS).
- Spigot diameter in mm, freely selectable (-xxx, always with 3 digits).

Intermediate lengths and other spigot diameters on request.

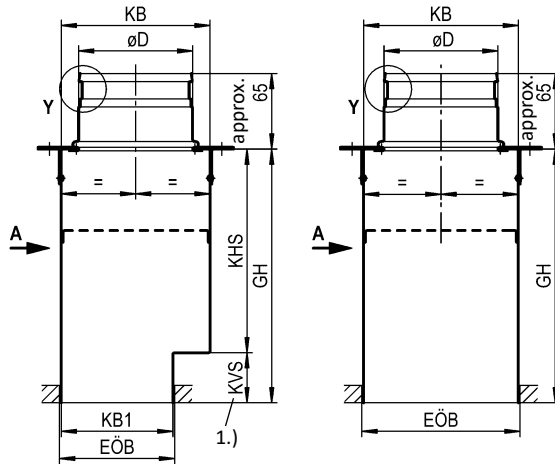
Plenum box (-ASK-24-...-00-S0)

Without fastening, only possible without diffuser. With spigot from above.

With spigot from above (-S0)

ASK-24-1/2-...-00-S0

ASK-24-3/4-...-00-S0



1.) Box neck

Available plenum box sizes (ASK-24-...-00-S0)

	KB	KB1	GH	KHS	KVS	EÖB ...-R0 ...-P0	a
DSC-1	128	53	218	175	43	56	148
DSC-2	128	93	218	175	43	96	148
DSC-3	133	-	218	175	43	136	153
DSC-4	173	-	278	235	43	176	193

Number of connection spigots

	øD	
	L ≤ 1000 (KL ≤ 997)	L > 1000 to L ≤ 1500 (KL > 997 to KL ≤ 1497)
DSC-1	1 x ø98	2 x ø98
DSC-2	2 x ø98	2 x ø98
DSC-3	2 x ø98	4 x ø98
DSC-4	2 x ø123	2 x ø138

L	KL	EÖL	
		...-R0	...-P0
1000	997	1010	1015
1500	1497	1510	1515

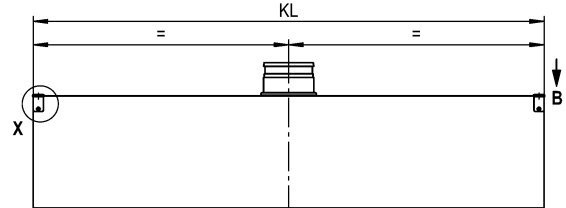
Available lengths plenum box (-ASK-24-...)

SINGLE DESIGN (-N)

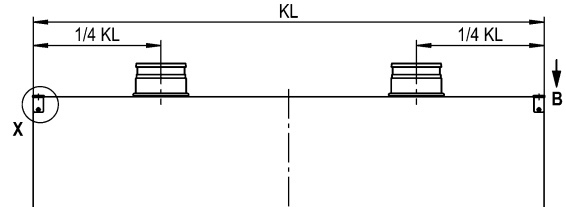
- Length L= 1000 mm (-01000-N) →
Length of box KL = L-3 = 997 mm
- Length L= 1500 mm (-01500-N) →
Length of box KL = L-3 = 1497 mm
- Length in mm, freely selectable (-xxxxx-N)
(length of plenum box ≥400 mm to ≤1500 mm)

Lateral spigot position (-S1) / lateral on the opposite side (-S2):

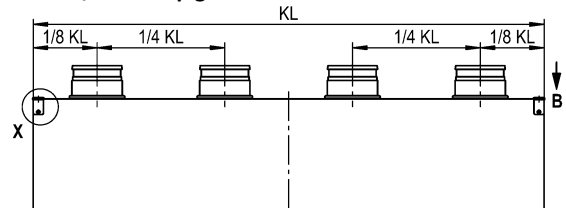
View A / with 1 spigot



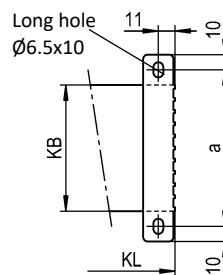
View A / with 2 spigots



View A / with 4 spigots



View B



For diffuser mounting, detail X, see page 15.

For rubber lip seal, detail Y, see page 13.

For fastening detail, see page 23.

For the band design, see page 21.

EÖB = installation opening width

EÖL = installation opening length

Plenum box height reduction (at an extra charge)

- With spigot position -S0:
With spigot position -S0, the height of plenum box GH can be reduced to 180 mm.

Box neck extension

- Box neck standard (-KVS) 43 mm.
- Box neck extension in mm, freely selectable (-xxx, always with 3 digits, available from >43 mm to 200 mm).

Spigot diameter:

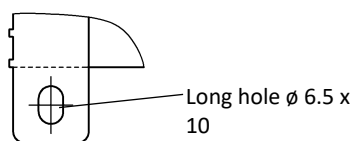
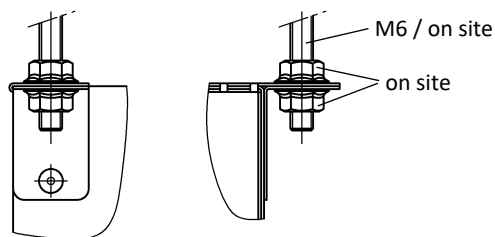
- Standard spigot diameter (-SDS).
- Spigot diameter in mm, freely selectable (-xxx, always with 3 digits).

Intermediate lengths and other spigot diameters on request.

Plenum box mounting

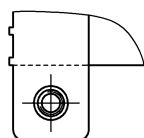
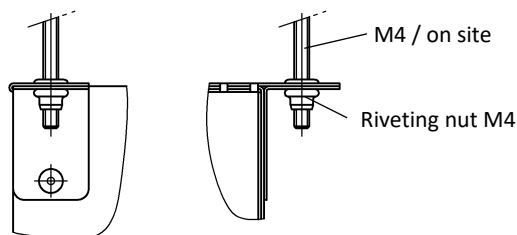
Detail X

with long hole $\varnothing 6.5 \times 10$ (-E0, standard):



with riveting nut M4 (-EM, at an extra charge):

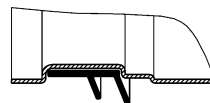
At an extra charge, the plenum boxes can be fitted with M4 riveting nuts to facilitate ceiling mounting.



Rubber lip seal (-GD0/-GD1), for ASK-24

- without rubber lip seal (-GD0) (standard).
- with rubber lip seal (-GD1), made of special rubber.

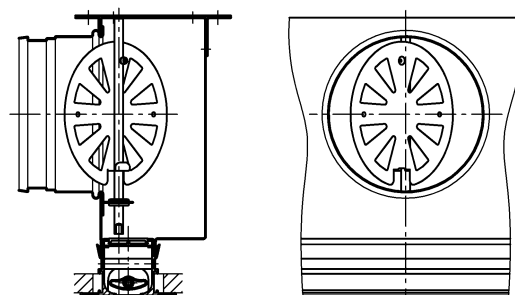
Detail Y



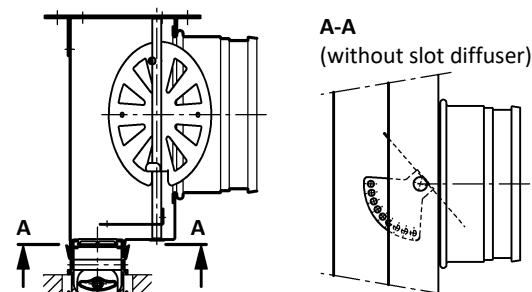
Damper (-DK0/-DK1/-DK2), for ASK-24

- Without damper (-DK0) (standard).
- with damper in the plenum box housing (-DK1) (with spigot position S1 and S2).
- with damper in the connection spigot, with cable-operated adjustment (-DK) (only with spigot position S0).

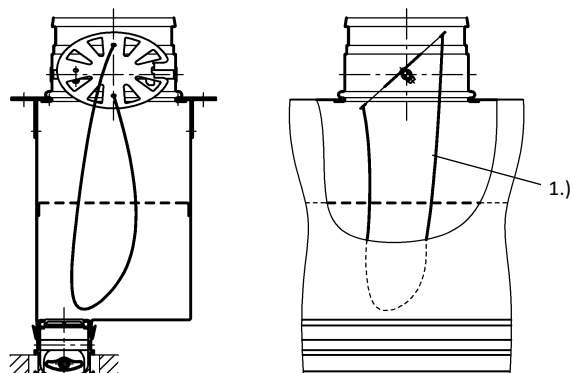
-DK1, lateral connection (-S1, standard)



-DK1, lateral connection located on the opposite side (-S2) Only for 1-slot models.



-DK2, connection from above (-S0, with cable-operated adjustment)

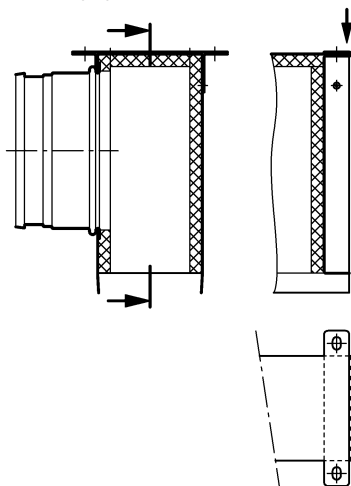


1.) With cable-operated adjustment (SZV)

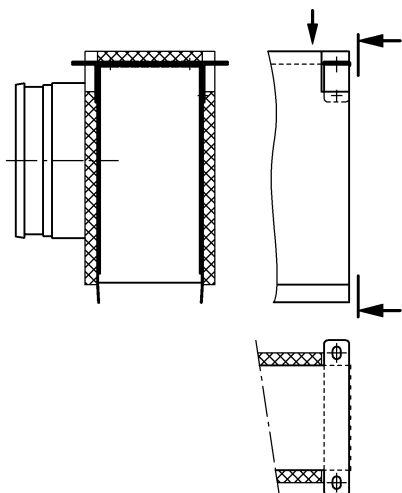
Insulation (-I0 / -Ii / -Ia), for ASK-24

- without insulation (-I0) (standard).
- with internal insulation (-Ii).
- with external insulation (-Ia).

Internal (-Ii)



External (-Ia)



Suspension lugs (-AL)

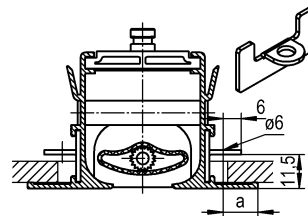
4 pieces, supplied loose.

Only possible without plenum box.

Possible for the models DSC-R0 and DSC-P0.

Not possible for the model DSC-S0.

The slot diffuser is fastened to 4 suspension brackets (for fastening details, see page 24)



	a
DSC-R0	11.5
DSC-P0	5

Additional profiles (-Z0 / -Z1 / -Z2 / -Z3)

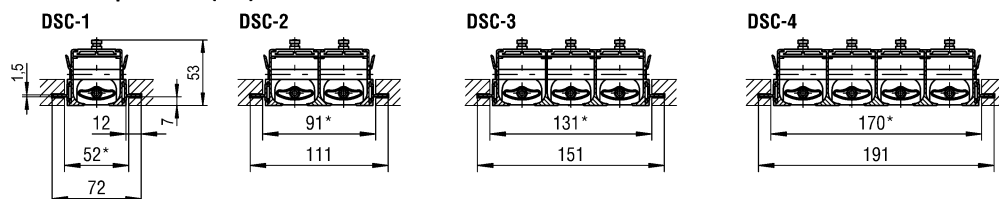
- Without additional profile (-Z0) (standard).
- with additional profile Z I (-Z1): connection of ceiling panels.
- with additional profile Z II (-Z2): connection of panelled ceilings.
- with additional profile Z III (-Z3): connection of ceiling panels.

To be fitted to the supply and return air models.

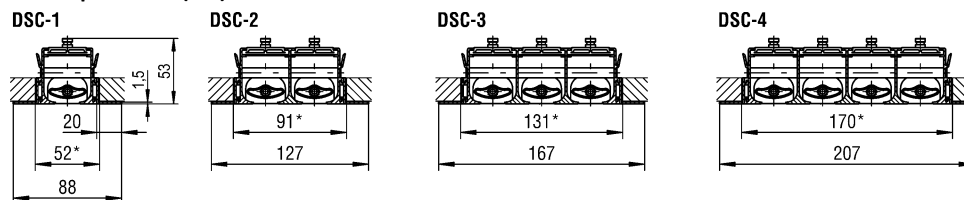
In the return air model, a perforated plate is mounted instead of the air deflection blades.

Only possible for DSC-S0.

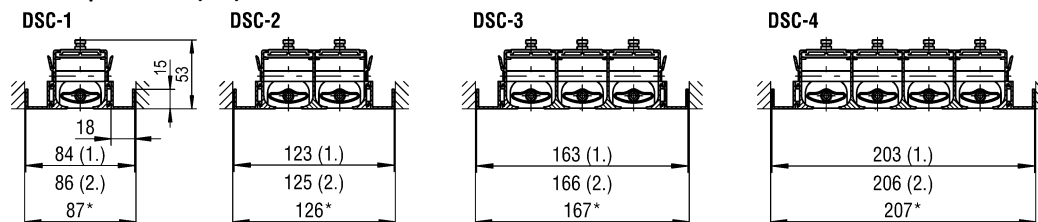
Additional profile ZI (-Z1)



Additional profile ZII (-Z2)



Additional profile ZIII (-Z3)



1. = anodised model

2. = painted model

* EÖB = installation opening width

EÖL = installation opening length

For the available lengths of the slot diffuser, see page 8.

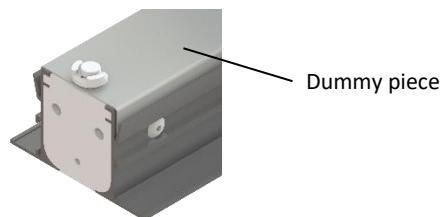
Dummy piece (-BS0 / -BS1)

- without dummy piece (-BS0) (standard).
- with dummy piece (-BS1), made of sheet steel painted to RAL 9005 (black).

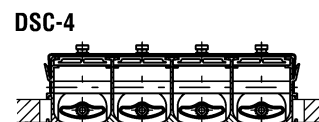
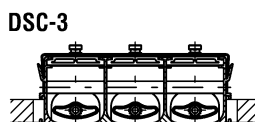
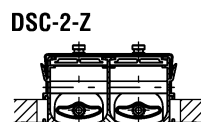
Only possible without plenum box and hit-and-miss damper.

Suitable for all frame profiles (-R0 / -S0 / -P0).

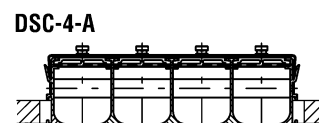
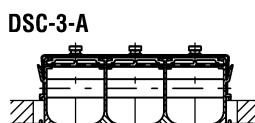
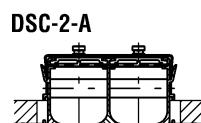
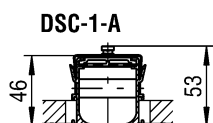
Mounting only possible with suspension lugs (-AL, standard in connection with active diffuser DSC-...-FV-...), counter pole brace (-GT) or clamp strap (-KB).



For supply air:



For return air:



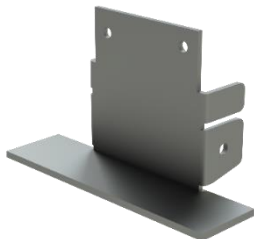
For the available lengths of the slot diffuser, see page 8.

End pieces (-E0 / -ES / -EB / -EL / -ER)

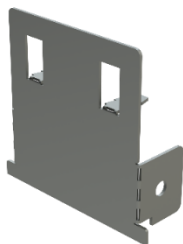
- without end piece (-E0) (standard).
- with end pieces (-ES, pair) (standard), supplied loose.
- with end pieces (-EB, pair) mounted ex works on both sides.
- with end piece (-EL) mounted ex works on the left.
- with end piece (-ER) mounted ex works on the right.

To give the impression of a continuous frame, lateral front end pieces can be fitted.

For DSC-R0 / DSC-P0:



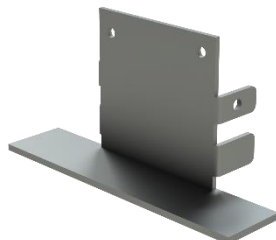
For DSC-S0-Z0:



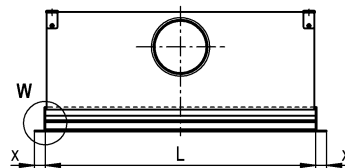
For DSC-S0-Z1:



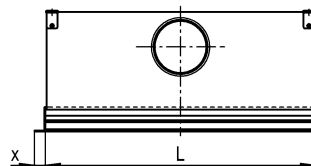
For DSC-S0-Z2 / DSC-S0-Z3:



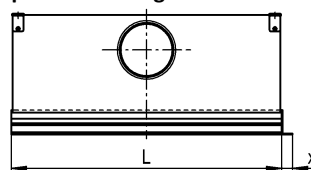
End piece on both sides



End piece on the left



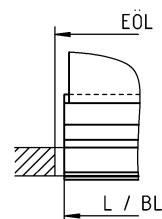
End piece on the right



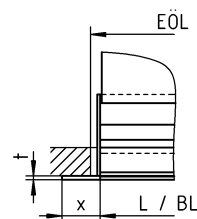
Detail W

DSC-...-R0 / DSC-...-P0 / DSC-...-S0-Z2 / -Z3

without end pieces

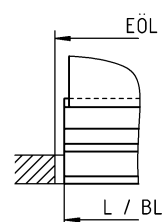


with end piece

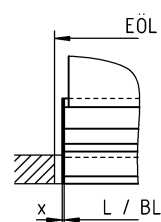


DSC-...-S0-Z0 / -Z1

without end pieces



with end piece



	x	t
DSC-...-R0	20	2
DSC-...-P0	16	2
DSC-...-S0-Z2 / -Z3	20	2
DSC-...-S0-Z0 / -Z1	1	-

Installation opening in the length section:

$EÖL = L+a$ or $BL+a$

	a
DSC-...-R0	10
DSC-...-P0	15
DSC-...-S0	15

Corner angle 90° (-EW-24-...-090-...)

Corner angles can only be produced as dummy pieces, i.e., without a plenum box.

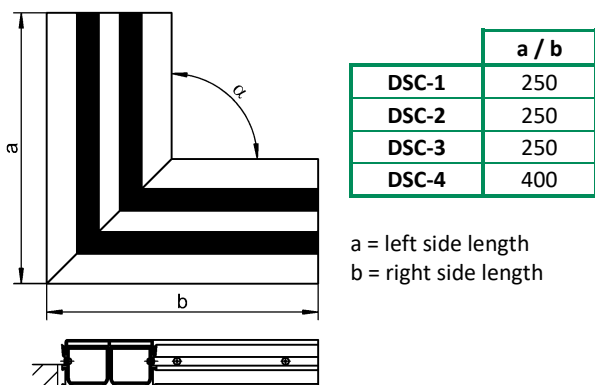
The corner angles are installed in the ceiling by means of suspension lugs (-AL, supplied loose).

The connection between the diffuser and corner angle is performed by means of fishplates. 4 fishplates are included in delivery (2 for each connection). They are supplied loose.

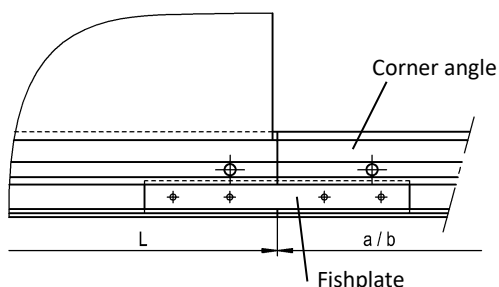
The standard angle α has a 90° (-090) angle.

With angle as required (-xxx, always with 3 digits), the angle value α between 90° [090] and 170° [170] is possible.

The side length on the left (a) and right (b) is 250 mm for DSC-1-... to DSC-3-... and 400 mm for DSC-4-....



Fishplate (-VL), for band design



Detail fishplate corner angle

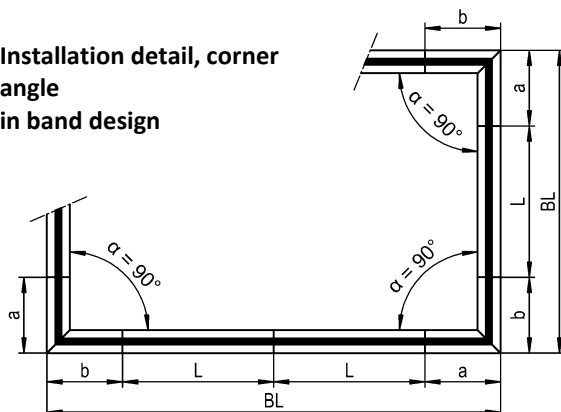
Frame profile:

DSC-...-R0 / DSC-...-P0:

DSC-...-S0-Z0:



Installation detail, corner angle in band design



Hit-and-miss damper (-SN / -SS)

- without hit-and-miss damper (-SN) (standard).
- with hit-and-miss damper (-SS).

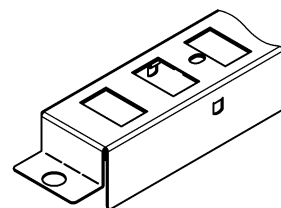
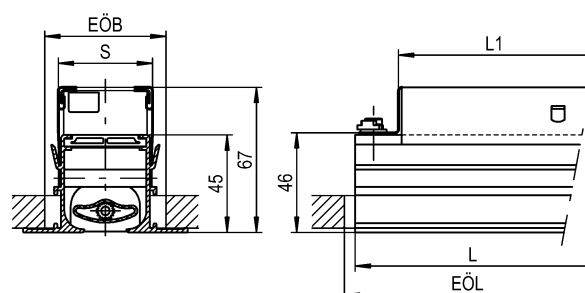
Only possible without plenum box.

DSC-R0 / DSC-P0:

- with screw mounting (-SM, standard)
- Mounting with counter pole brace (-GT)

DSC-S0:

- Screw mounting not possible.
- Mounting with counter pole brace (-GT)
- only possible for models with additional profile -Z2. Not possible for models without additional profile -Z0 and with additional profiles -S0-Z1 and -S0-Z3.



	S	EÖB	
		Standard	Min. *
DSC-1	43	56	51
DSC-2	82	95	91
DSC-3	122	135	131
DSC-4	162	175	171

* recommended ceiling cutout for screw mounting (-SM)

L	L1	a	
1000	960	DSC-...-R0	10
1500	1460	DSC-...-P0	15
		DSC-...-S0	15

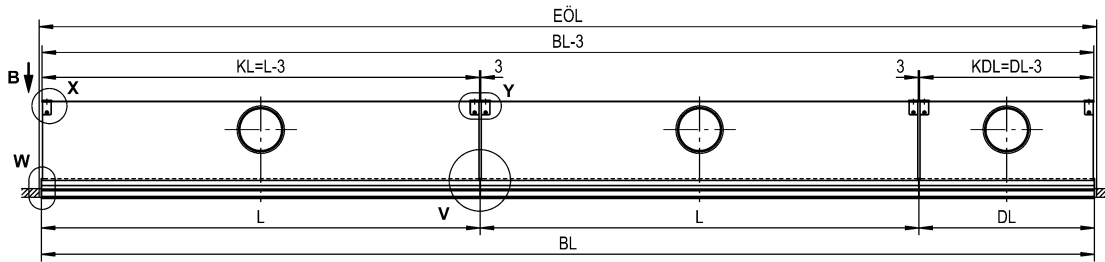
Installation opening in the length section:

EÖL = L+a or BL+a

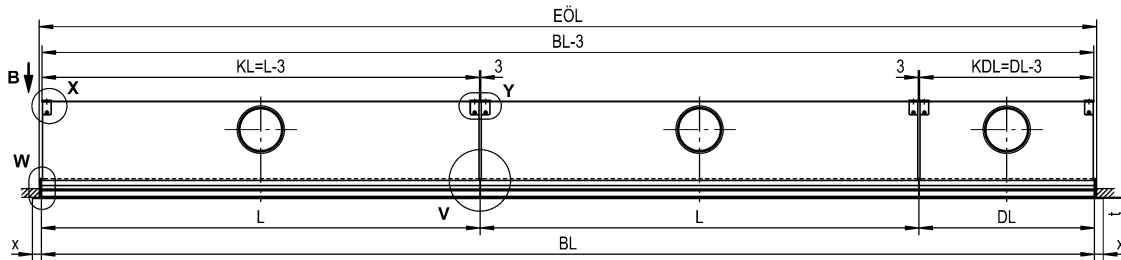
For fastening details regarding screw mounting, see page 25.
For fastening details regarding the mounting to the counter pole brace, see page 26.

PLENUM BOX IN BAND DESIGN

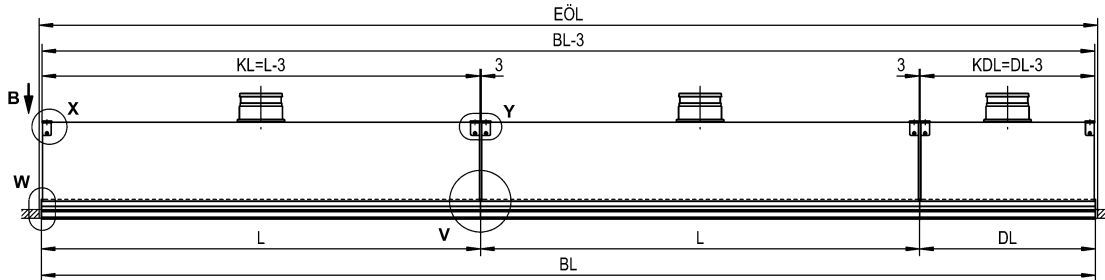
DSC without end piece / permanent connection FV and concealed mounting VM / lateral spigot (-S1/-S2)



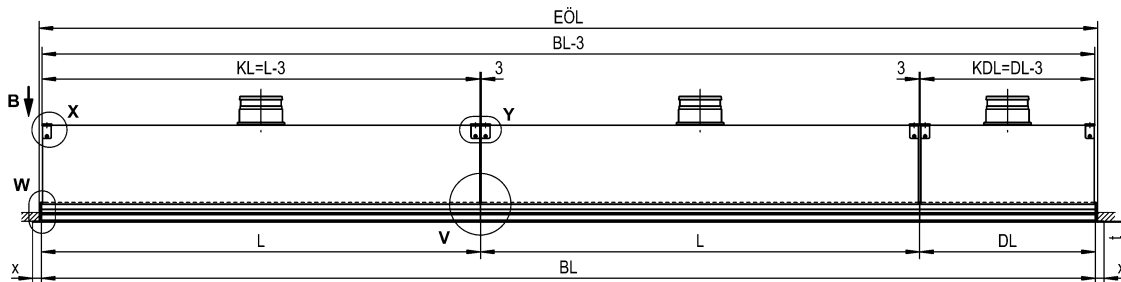
DSC with end piece / permanent connection FV and concealed mounting VM / lateral spigot (-S1/-S2)



DSC without end piece / permanent connection FV and concealed mounting VM / spigot from above (-S0)



DSC with end piece / permanent connection FV and concealed mounting VM / spigot from above (-S0)



When the slot diffuser type DSC is designed as a band > 2000 mm, the total length BL is assembled from standard lengths of 1500 mm. The difference pieces <1500 mm to ≥400 mm can be fitted with a plenum box.

The difference pieces <400 mm are supplied as dummy pieces without plenum box. A different band division is possible after consultation and when required by the customer.

L = length
 DL = difference in length
 BL = band length
 KL = length of plenum box
 KDL = difference in length, plenum box
 EÖL = ceiling opening dimensions

	x	t	a
DSC-...-R0-...	20	2	10
DSC-...-P0-...	16	2	15
DSC-...-S0-Z0	1	-	
DSC-...-S0-Z1	1	-	
DSC-...-S0-Z2	20	2	
DSC-...-S0-Z3	1	-	

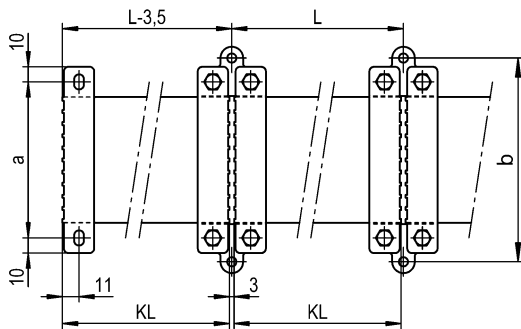
Installation opening in the length section: **EÖL = BL+a**

For detail V / detail X / detail Y, see page 22.

For detail W, see page 19. For view B see page 22.

For available sizes, see pages 9 + 10 + 11 + 12.

View B

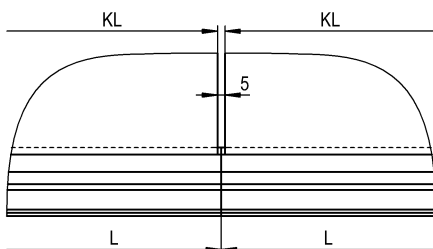


Available sizes

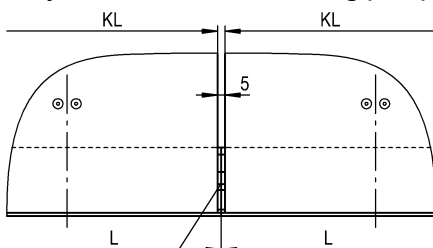
	FV				VM			
	-S1/-S2		-S0		-S1/-S2		-S0	
	a	b	a	b	a	b	a	b
DSC-1	103	135	148	180	103	135	148	180
DSC-2	103	135	148	180	113	145	148	180
DSC-3	142	174	148	180	153	185	153	185
DSC-4	182	214	188	222	193	225	193	225

Detail V

Butt joint of permanent connection (-FV)



Butt joint of concealed mounting (-VM)

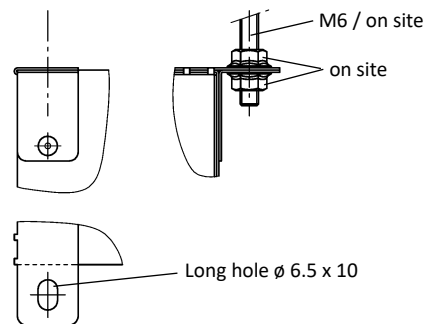


Seal butt joint on site (sealing tape)

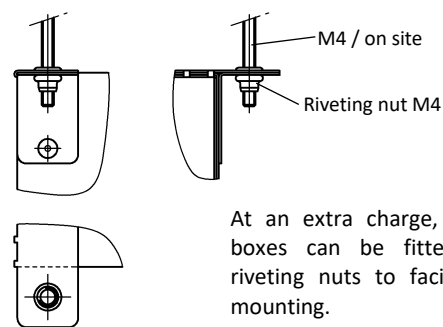
Plenum box mounting

Detail X

with long hole $\phi 6.5 \times 10$ (-E0, standard):

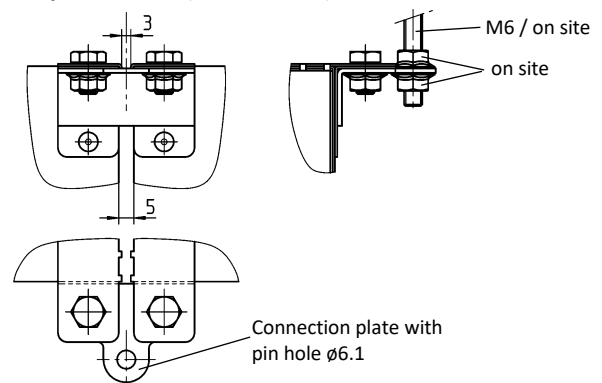


with riveting nut M4 (-EM, at an extra charge):

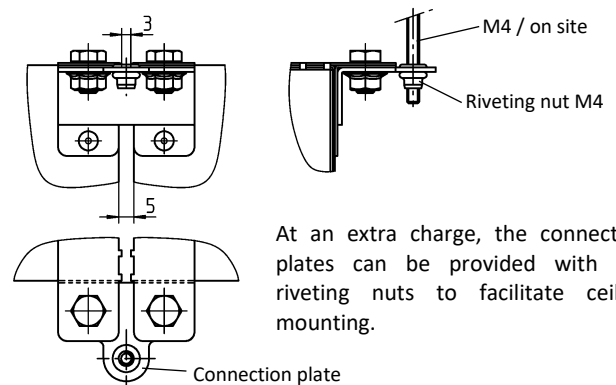


Detail Y

with pin hole $\phi 6.1$ (-E0, standard):

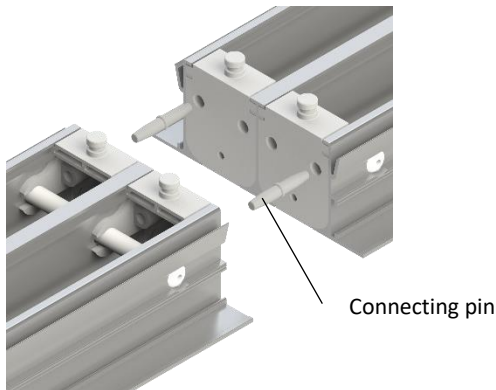


with riveting nut M4 (-EM, at an extra charge):



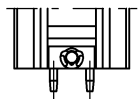
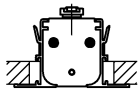
At an extra charge, the connection plates can be provided with M4 riveting nuts to facilitate ceiling mounting.

Connecting pin for band design (supplied loose as standard)

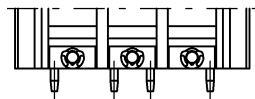
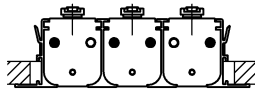


Arrangement of connecting pins

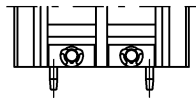
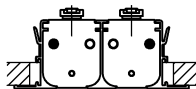
DSC-1-...



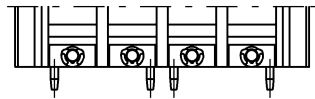
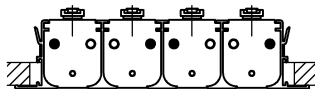
DSC-3-...



DSC-2-...



DSC-4-...



Attention:

The connecting pins are only suitable for positioning and for force transmission.

FASTENING METHODS

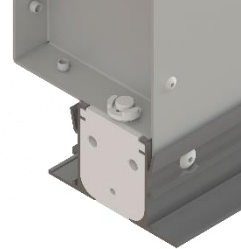
With plenum box

Permanent connection (-FV)

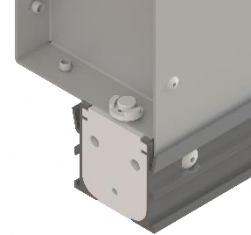
As standard for the models DSC-R0, DSC-S0 and DSC-P0. The slot diffuser is permanently connected to the plenum box.

(See pages 9 + 10)

DSC-...-R0 / DSC-...-P0



DSC-...-S0



Concealed mounting (-VM)

Possible for the models DSC-R0 / DSC-P0 and DSC-S0-Z2 (with additional profile).

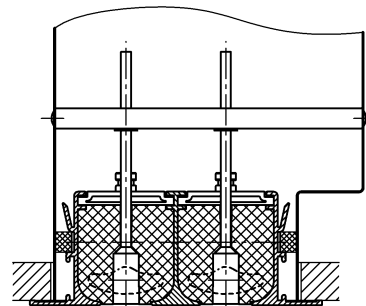
Not possible for the models DSC-S0-Z0 / DSC-S0-Z1 / DSC-S0-Z3.

The slot diffuser is screwed to the pole brace in the plenum box housing with concealed screws.

Frame with foam gasket.

Plenum box supplied loose from the factory.

(See pages 11 + 12)



Without plenum box

Mounting with counter pole brace (-GT)

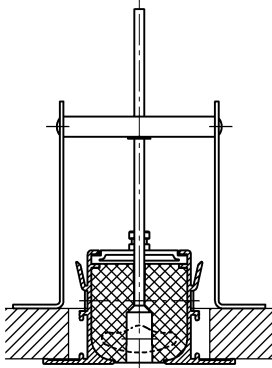
Screws and counter pole brace are supplied loose (2 pieces).
Possible for the models DSC-R0 / DSC-P0 and DSC-S0-Z2 (with additional profile).

Not possible for the models DSC-S0-Z0 / DSC-S0-Z1 / DSC-S0-Z3.

The slot diffuser is screwed to the counter pole brace (pole brace strap) with concealed screws (included in delivery).

For mounting, access on the rear is required!

(see page 26)



Mounting with clamp strap (-KB)

Screws and clamp straps are supplied loose (2 pieces).

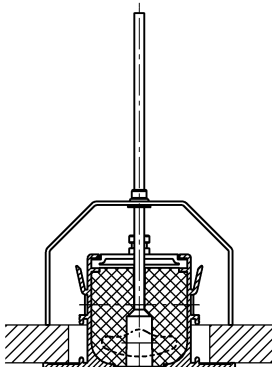
Possible for the models DSC-R0 / DSC-P0 and DSC-S0-Z2 (with additional profile).

Not possible for the models DSC-S0-Z0 / DSC-S0-Z1 / DSC-S0-Z3.

The slot diffuser is screwed to the clamp strap with concealed screws (included in delivery).

For mounting, access on the rear is not required!

(See page 27)



Screw mounting (-SM)

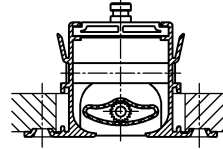
Screws must be provided on site.

Possible for the models DSC-R0 and DSC-P0.

Not possible for the model DSC-S0.

The slot diffuser is fixed with visible screws.

(See page 25)



Mounting with suspension lugs (-AL)

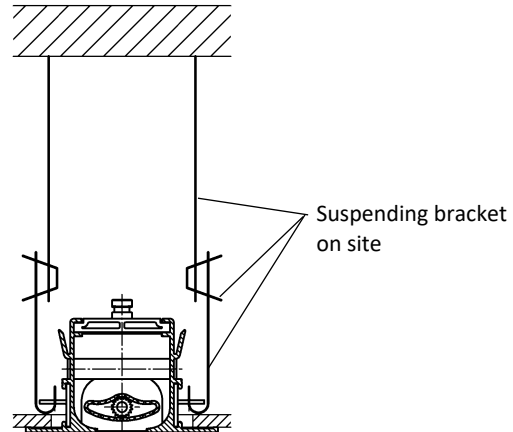
4 pieces, supplied loose.

Possible for the models DSC-R0 and DSC-P0.

Not possible for the model DSC-S0.

The slot diffuser is fastened to 4 suspension brackets

(See page 16)



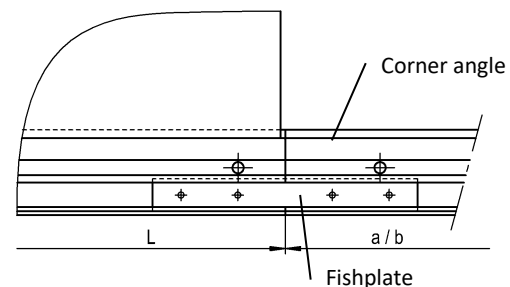
Fishplate (-VL)

4 pieces, supplied loose.

Only for connection of the corner angle to the slot diffuser in band design.

The corner angle is fixed with the help of the fishplates (2 on each side).

(See page 20)



SCREW MOUNTING (-SM)

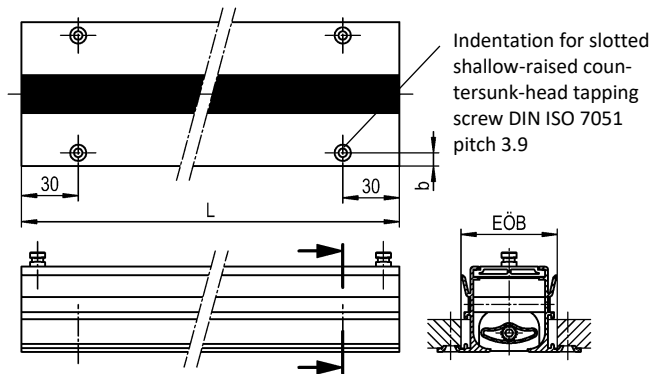
Only possible without plenum box.

During screw mounting, the slot diffuser is fixed with visible screws (provided on site).

Possible for the models DSC-R0 and DSC-P0.

Not possible for the model DSC-S0.

Arrangement, number and size of the bores is the same for the models with 2, 3, and 4 slots.



	EÖB	
	Standard	Min. *
DSC-1	56	51
DSC-2	95	91
DSC-3	135	131
DSC-4	175	171

	b
DSC-...-R0	7
DSC-...-P0	5

* recommended ceiling cutout for screw mounting (-SM)

MOUNTING WITH COUNTER POLE BRACE (-GT)

Only possible without plenum box.

Screws and counter pole brace are supplied loose (2 pieces).

Possible for the models DSC-R0 / DSC-P0 and DSC-S0-Z2 (with additional profile).

Not possible for the models DSC-S0-Z0 / DSC-S0-Z1 / DSC-S0-Z3.

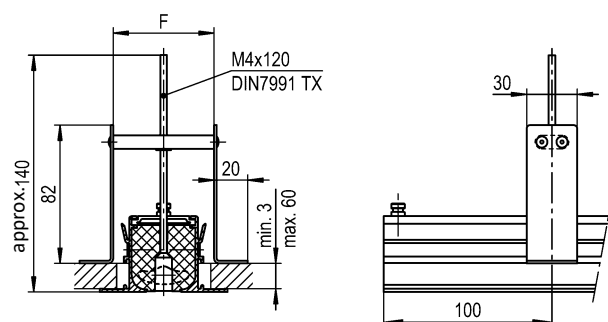
The slot diffuser is screwed to the counter pole brace (pole brace strap) with concealed screws (included in delivery).

For mounting, access on the rear is required!

	F	c
DSC-1	60	-
DSC-2	100	40
DSC-3	140	79
DSC-4	180	119

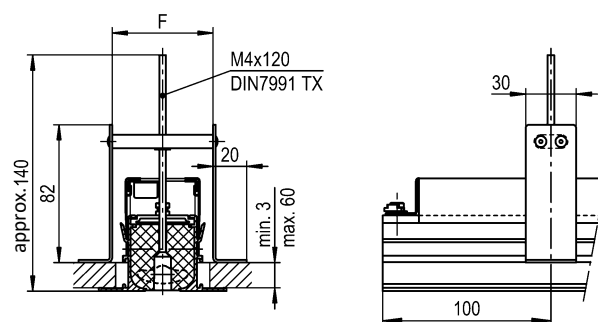
without hit-and-miss damper

DSC-1-...-SN

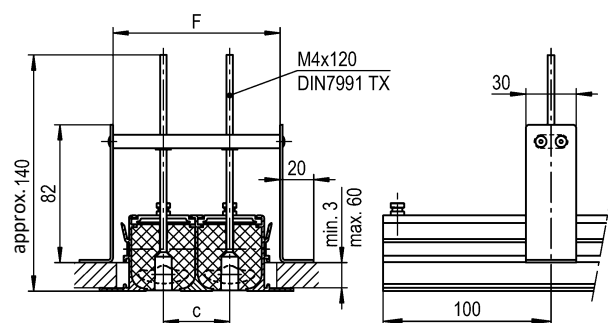


with hit-and-miss damper

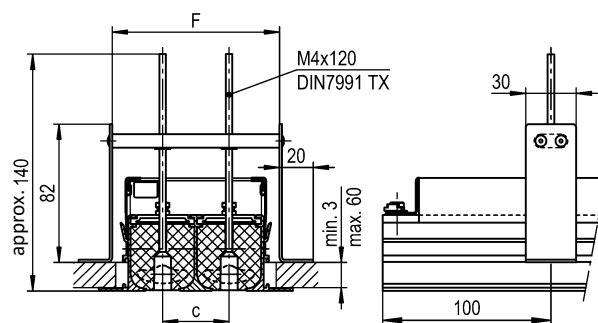
DSC-1-...-SS



DSC-2 bis 4-...-SN



DSC-2 bis 4-...-SS



EÖB = installation opening width, see page 7.

Attention: The max. torque of the fastening screw is 0.5 Nm

MOUNTING WITH CLAMP STRAP (-KB)

Only possible without plenum box.

Screws and clamp straps are supplied loose (2 pieces).

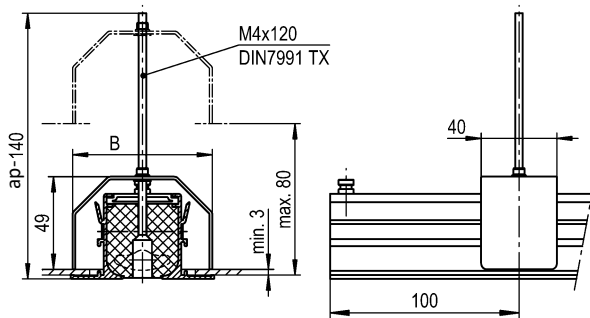
Possible for the models DSC-R0 / DSC-P0 and DSC-S0-Z2 (with additional profile).

Not possible for the models DSC-S0-Z0 / DSC-S0-Z1 / DSC-S0-Z3.

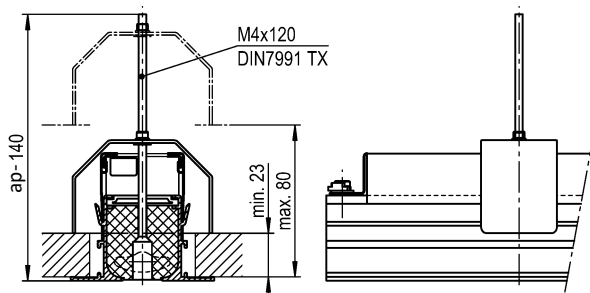
The slot diffuser is screwed to the clamp strap with concealed screws (included in delivery).

For mounting, access on the rear is not required!

DSC-...-SN (without hit-and-miss damper)



DSC-...-SS (with hit-and-miss damper)



	B
DSC-1	74
DSC-2	114
DSC-3	154
DSC-4	194

Mounting instructions for clamp strap

Introduce the screw through the plastic support for concealed mounting of the slot diffuser and screw it on the clamp strap. Position the clamp straps in longitudinal direction and introduce them, together with the slot diffuser, into the ceiling.

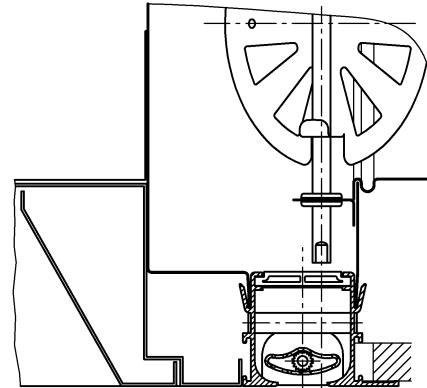
Then pivot the clamp strap by about 90° by rotating the screw and lower it over the slot diffuser profile. Tighten the screw until the slot diffuser is firmly locked at the ceiling.

Attention: The max. torque of the fastening screw is 0.5 Nm

INSTALLATION

Fitting to air-handling lights

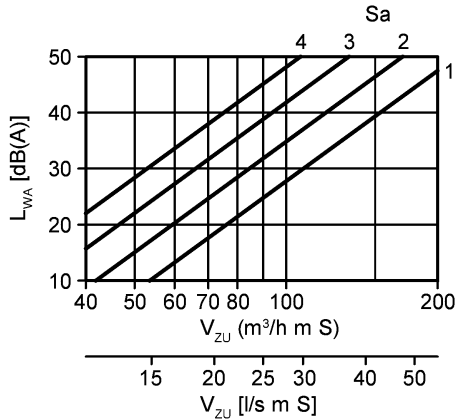
To obtain a perfectly flush fit, when attaching slot diffusers to air-handling lights, the external profile can be attached on one side and the special profile "S" on the other side.



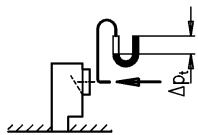
TECHNICAL DATA

Pressure loss and noise level

Sound level, with damper (supply air), L=1000

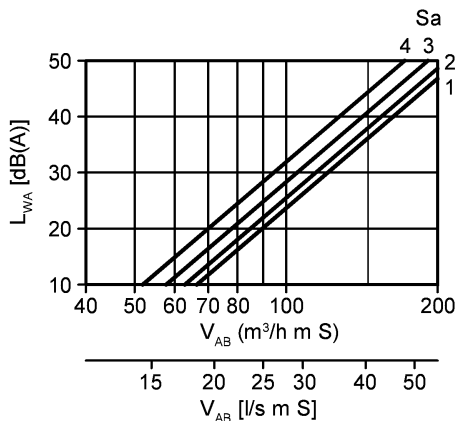


Damper position "OPEN"

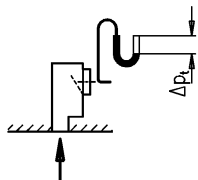


Correction for damper "CLOSED" + 4 dB(A)

Sound level, with damper (return air), L=1000



Damper position "OPEN"

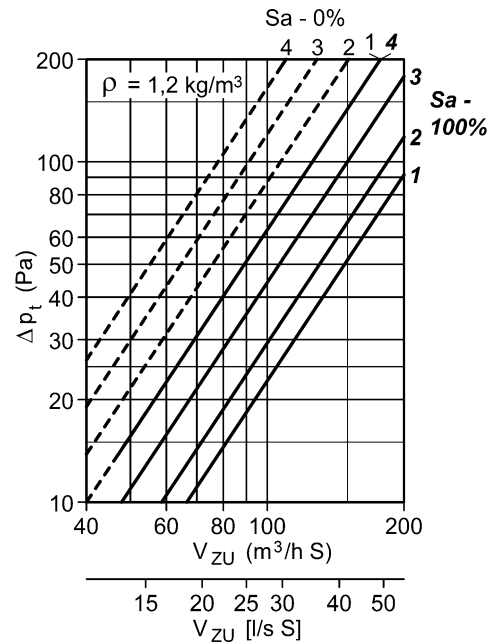


Correction for damper "CLOSED" + 16 dB(A)

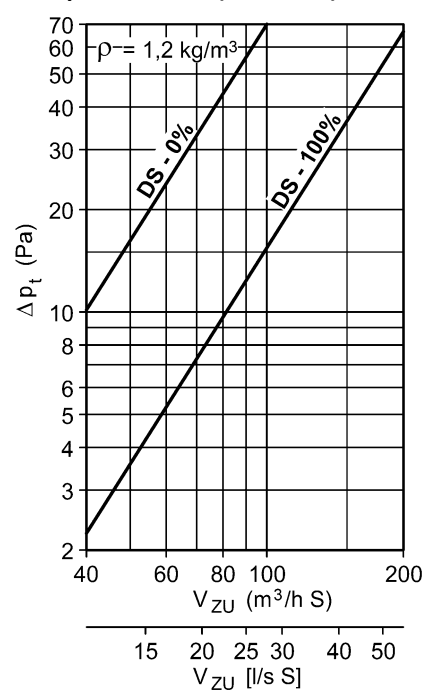
Length correction (supply and return air)

L (m)	1	1.5	2	2.5	3	4	5
KF [dB(A)]	0	1.8	3	4	4.7	6	7

Total pressure loss (supply air), L = 1000



Total pressure loss (return air), L = 1000



Damper position:

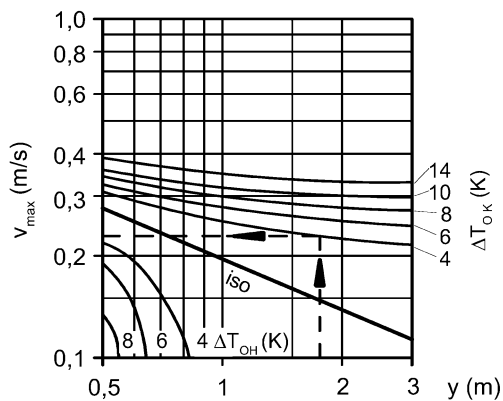
OPEN = 100%

CLOSED = 0%

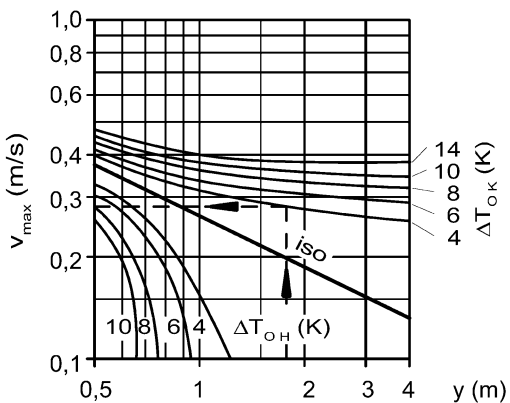
Maximum end velocity of jet

Blade position -V

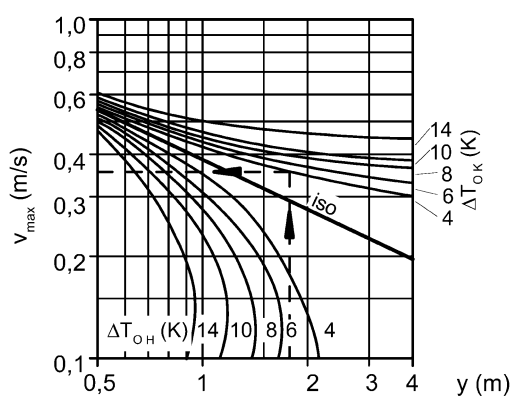
$V_{zu} = 30 \text{ m}^3/\text{h m S}$ [8.3 l/s m S]



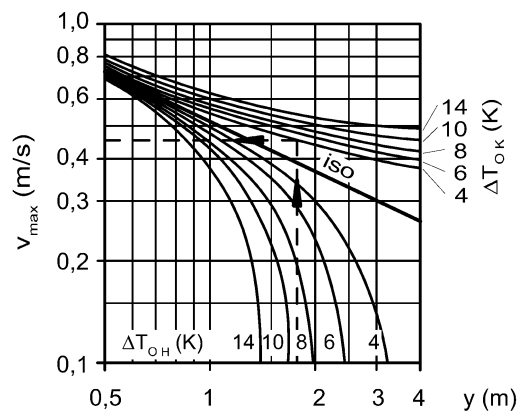
$V_{zu} = 40 \text{ m}^3/\text{h m S}$ [11.1 l/s m S]



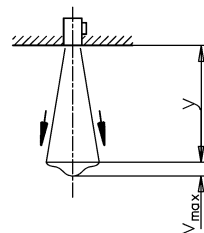
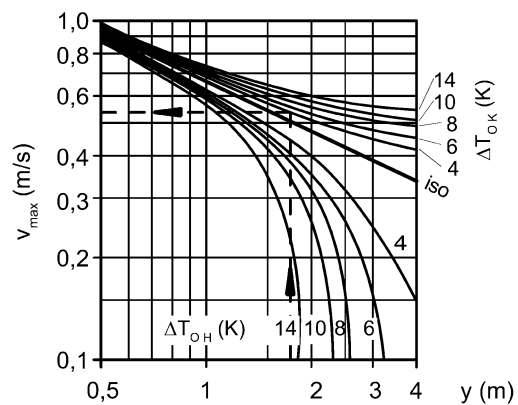
$V_{zu} = 60 \text{ m}^3/\text{h m S}$ [16.7 l/s m S]



$V_{zu} = 80 \text{ m}^3/\text{h m S}$ [22.2 l/s m S]



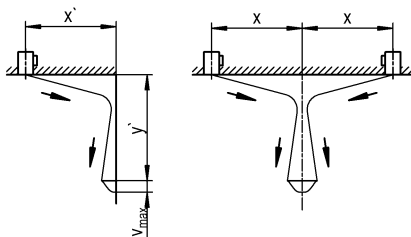
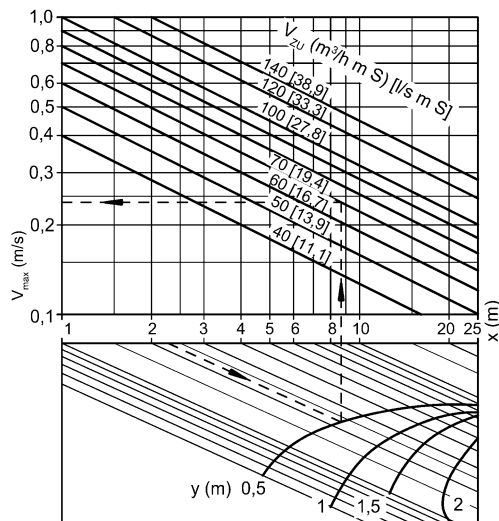
$V_{zu} = 100 \text{ m}^3/\text{h m S}$ [27.8 l/s m S]



- DSC-1: $v_{\max} \times 1$
- DSC-2: $v_{\max} \times 1.3$
- DSC-3: $v_{\max} \times 1.6$
- DSC-4: $v_{\max} \times 1.9$

Slot diffuser DSC-Z (supply air)

Blade position -L/-R, one-way throw



$$x = x' + y'$$

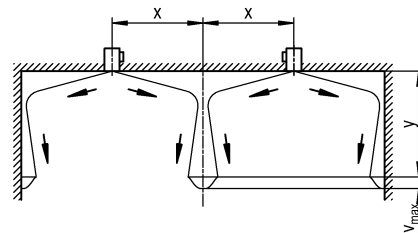
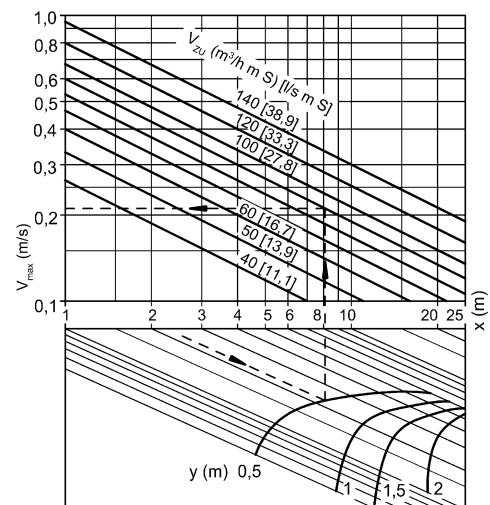
DSC-1: $v_{\max} \times 1.0$

DSC-2: $v_{\max} \times 1.4$

DSC-3: $v_{\max} \times 1.7$

DSC-4: $v_{\max} \times 2.0$

Blade position -B, two-way throw



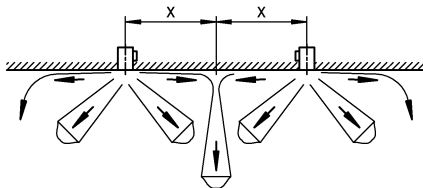
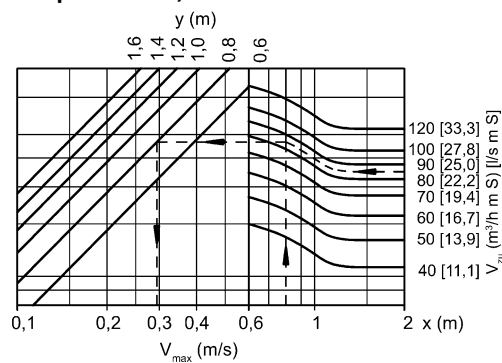
DSC-1: $v_{\max} \times 1.0$

DSC-2: $v_{\max} \times 1.4$

DSC-3: $v_{\max} \times 1.86$

DSC-4: $v_{\max} \times 2.0$

Blade position -D, multi-directional throw



DSC-1: $v_{\max} \times 1.0$

DSC-2: $v_{\max} \times 1.4$

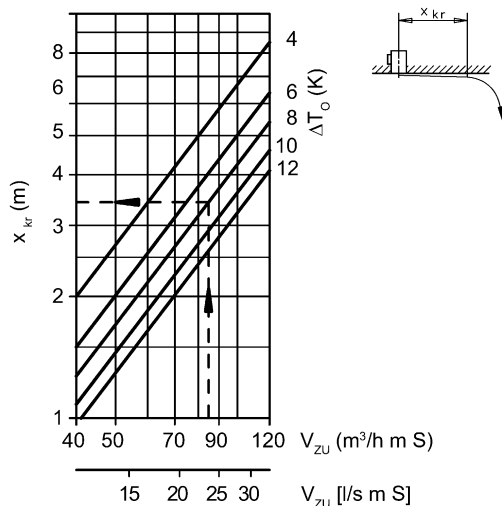
DSC-3: $v_{\max} \times 1.45$

DSC-4: $v_{\max} \times 2.0$

Critical throw

Slot diffuser DSC-Z (supply air)

Blade position -L / -R / -B / -D



DSC-1: $x_{kr} \times 1.00$

DSC-2: $x_{kr} \times 1.26$

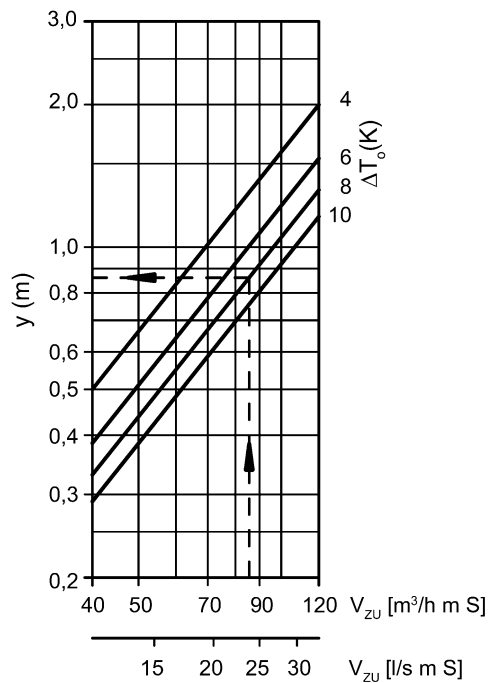
DSC-3: $x_{kr} \times 1.44$

DSC-4: $x_{kr} \times 1.64$

Maximum penetration

Slot diffuser DSC-Z (supply air)

Blade position -D, multi-directional throw



DSC-1: $y \times 1$

DSC-2: $y \times 1.1$

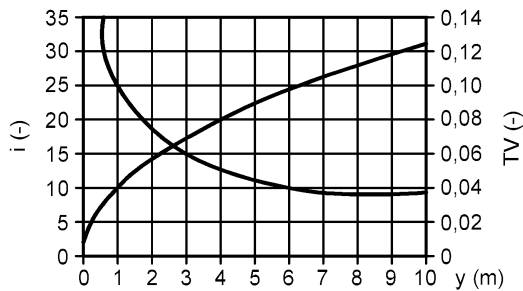
DSC-3: $y \times 1.2$

DSC-4: $y \times 1.3$

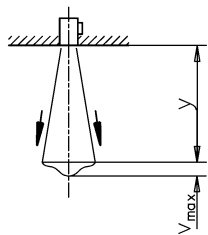
Temperature ratios

Slot diffuser DSC-Z (supply air)

Blade position -V (vertical throw)



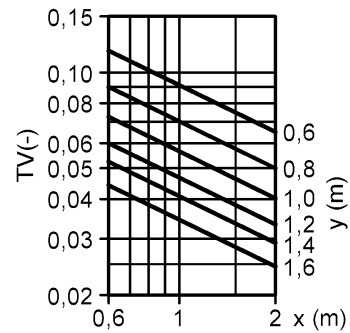
(temperature and induction ratio)



DSC-1: TV x 1.0
DSC-2: TV x 1.3
DSC-3: TV x 1.6
DSC-4: TV x 1.9

Slot diffuser DSC-Z (supply air)

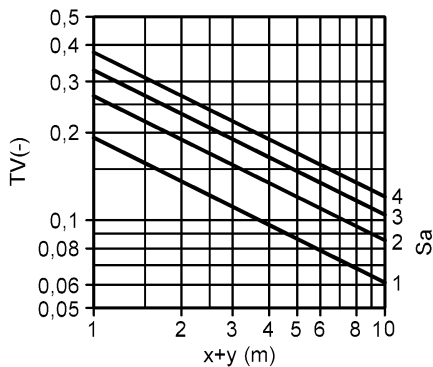
Blade position -D (multi-directional throw)



DSC-1: TV x 1
DSC-2: TV x 1.4
DSC-3: TV x 1.7
DSC-4: TV x 2.0

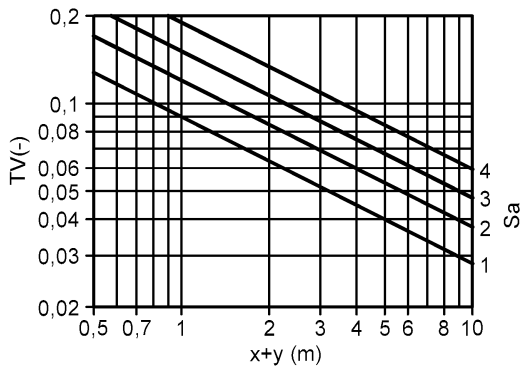
Slot diffuser DSC-Z (supply air)

Blade position -L / -R (one-way throw)



Slot diffuser DSC-Z (supply air)

Blade position -B (two-way throw)



LEGEND

v_{\max} (m/s)	=	Maximum end velocity of jet
v_{mittel} (m/s)	=	Average end velocity of jet ($v_{\text{mittel}} = v_{\max} \times 0.5$)
ΔT_{OK} (K)	=	Temperature difference between supply air and room temperature in cooling mode
ΔT_{OH} (K)	=	Temperature difference between air supply and room temperature in heating mode
y (m)	=	vertical throw
i (-)	=	Induction ratio ($i = V_x / V_{\text{ZU}}$)
V_x (m³/h) [l/s]	=	total air jet volume at point x
V_{ZU} (m³/h) [l/s]	=	Supply air volume
V_{ZU} (m³/h m S)	=	Total volumetric flow per metre per slot
V_{ZU} [l/s m S]	=	Total volumetric flow per metre per slot
V_{AB} (m³/h m S)	=	Total volumetric flow per metre per slot
V_{AB} [l/s m S]	=	Total volumetric flow per metre per slot
TV (-)	=	Temperature ratio ($TV = \Delta T_x / \Delta T_o$)
ΔT_x (K)	=	Temperature difference at point x
ΔT_o (K)	=	Temperature difference between supply air and room temperature ($\Delta T_o = t_{\text{ZU}} - t_R$)
iso (-)	=	isothermal
Sa (-)	=	Number of slots
x_{kr} (m)	=	critical throw
x (m)	=	horizontal throw
$x+y$ (m)	=	horizontal + vertical throw
L_{WA} [dB(A)]	=	A-weighted sound power level
P_{dyn} (Pa)	=	Dynamic pressure
P_{stat} (Pa)	=	Static pressure
Δp_t (Pa)	=	Total pressure loss
ρ (kg/m³)	=	Density
AL (-)	=	diffuser length
KF (-)	=	Correction factor
L (mm)	=	length
BL (mm)	=	Band length
DL (mm)	=	Difference in length
KH (mm)	=	Height of box
GH (mm)	=	Total height
KB (mm)	=	Width of box
KL (mm)	=	Length of box
D (mm)	=	Diameter
t_{ZU} (°C)	=	Supply air temperature
t_R (°C)	=	room temperature
$E\ddot{O}B$ (mm)	=	Installation opening width
$E\ddot{O}L$ (mm)	=	Installation opening length
DS (%)	=	Damper position

SLOT DIFFUSER ORDER CODE

01	02	03	04	05	06	07
Type	Model	Air throw	Frame profile	Frame surface	Blade colour	Blade position for air jet
Example						
DSC	-2	-Z	-R0	-9010	-L9005	-V

08	09	10	11	12	13	14
Single / band design	Length	Mounting	End piece	Additional profile	Dummy piece	Hit-and-miss damper
Example						
-N	-01000	-FV	-ES	-Z0	-BS0	-SN

Sample

DSC-2-Z-R0-9010-L9005-V-N-01000-FV-ES-Z0-BS0-SN

DSC slot diffuser | 2-slot | supply air | STANDARD frame profile | aluminium painted to RAL colour 9010 (white) | blades made of plastic material (hard PVC), colour similar to RAL 9005 (black) | blades with vertical throw | single design | length 1000 mm | permanent connection to plenum box | with end piece | without additional profile | without dummy piece | without hit-and-miss damper

ORDER DETAILS

01 - Type

DSC = DSC slot diffuser

02 - Model

- 1 = 1-slot
- 2 = 2-slot
- 3 = 3-slot
- 4 = 4-slot

03 - Air throw

- Z = supply air (with blades)
- A = return air (without blades)

04 - Frame profile

- R0 = Frame profile STANDARD
- S0 = Narrow frame profile
- P0 = Special frame profile

05 - Frame surface

- ELOX = Natural colour anodised aluminium (standard).
- 9006 = Aluminium painted to RAL colour 9006 (white aluminium).
- 9010 = Aluminium painted to RAL colour 9010 (white)
- xxxx = aluminium painted to a freely selectable RAL colour (at an extra charge, always with 4 digits).

06 - Blade colour

- 00000 = without blades (for return air only).
- L9005 = blades made of plastic material (hard PVC), colour similar to RAL 9005 (black) (standard).
- L9006 = blades made of plastic material (hard PVC), colour similar to RAL 9006 (white aluminium).
- L9010 = blades made of plastic material (hard PVC), colour similar to RAL 9010 (white).
- Lxxxx = blades made of plastic material (hard PVC), painted to a freely selectable RAL colour.

07 - Blade position for air jet

- 0 = Without blades, for return air, with perforated plate.
- V = blades with vertical throw.
- L = blades with horizontal one-way throw to the left.
- R = blades with horizontal one-way throw to the right.
- B = blades with horizontal two-way throw.
- D = blades with horizontal diverging throw (multi-direction throw) (standard).

08 - Single / band design

- N = single design (length max. 1500 mm).
- B = band design (available lengths according to SCHAKO standard for band design).

09 - Length

- 01000 = length 1000 mm.
- 01500 = length 1500 mm.
- xxxxx = length in mm, can be freely selected (always with 5 digits).

10 - Mounting

- 00 = without connection (only possible without plenum box).
- FV = permanent connection to plenum box or hit-and-miss damper (standard).
- VM = concealed mounting (only with plenum box, possible for the models DSC-...-R0 / DSC-...-P0 and DSC-...-S0-...-Z2 (with additional profile)).
- GT = mounting with counter pole brace (only possible without plenum box) (possible for the models DSC-...-R0 / DSC-...-P0 and DSC-...-S0-...-Z2 (with additional profile)).
- KB = clamp strap (not for use with plenum box), screws and clamp strap supplied loose (pair) (possible for the models DSC-...-R0 / DSC-...-P0 and DSC-...-S0-...-Z2 (with additional profile)).
- SM = screw mounting (only possible without plenum box.)
- AL = Suspension lugs (only possible without plenum box).

11 - End piece

- E0 = without end piece (standard).
- ES = with end piece (pair, supplied loose).
- EB = with end piece mounted ex works on both sides.
- EL = with end piece mounted ex works on the left side.
- ER = with end piece mounted ex works on the right side.

12 - Additional profile

- Z0 = without additional profile (standard).
 - Z1 = with additional profile Z I.
 - Z2 = with additional profile Z II.
 - Z3 = with additional profile Z III.
- Additional profiles only possible with frame profile DSC-S0.

13 - Dummy piece

BS0= without dummy piece

BS1= with dummy piece made of sheet steel painted to RAL 9005 (black).

Dummy piece only possible without plenum box and hit-and-miss damper. Mounting only possible with suspension lugs (-AL, standard in connection with active diffuser DSC-...-FV-...), counter pole brace (-GT) or clamp strap (-KB).

14 - Hit-and-miss damper

SN = without hit-and-miss damper (standard).

SS = with hit-and-miss damper (only possible without a plenum box)

(Mounting for DSC-R0 and DSC-P0: with screw mounting [-SM, standard] and with counter pole brace [-GT] / mounting for DSC-S0: screw mounting not possible, with counter pole brace [-GT] and only with additional profile -Z2).

PLENUM BOX ORDER CODE

01	02	03	04	05	06	07	08
Type	Diffuser	Model	Single / band design	Length	Mounting of box	Material	Damper
Example							
ASK	-24	-2	N	-01000	-FV	-SV	-DK1

09	10	11	12	13	14	15
Rubber lip seal	Insulation	Height of plenum box	Box neck	Spigot position	Spigot diameter	Suspension
-GD1	-I0	-KHS	-KVS	-S1	-SDS	-E0

Sample

ASK-24-2-N-01000-FV-SV-DK1-GD1-I0-KHS-KVS-S1-SDS-E0

Plenum box for slot diffuser | For DSC | 2-slot | Single design | Length 1000 mm | Permanent connection | Galvanised sheet steel | With damper | With rubber lip seal | Without insulation | Standard height of plenum box | Standard box neck | Lateral spigot | Standard spigot diameter | Without riveting nut

ORDER DETAILS

01 - Type

ASK = plenum box for slot diffuser

02 - Diffuser

24 = for DSC

03 - Model

1 = 1-slot
 2 = 2-slot
 3 = 3-slot
 4 = 4-slot

04 - Single / band design

N = single design (length of box max. 1500 mm).
 B = band design (available lengths according to SCHAKO standard for band design).

05 - Length

01000 = length 1000 mm.
 01500 = length 1500 mm.
 xxxxx = Length in mm, freely selectable (always with 5 digits, length min. 400 mm / max. 1500 mm).

06 - Mounting of box

FV = permanent connection (standard).
 VM = concealed mounting (only possible for the models DSC-...-R0 / DSC-...-P0 and DSC-...-S0-...-Z2).
 00 = without fastening (only possible without diffuser).

07 - Material

SV = galvanised sheet steel (standard).

08 - Damper

DK0 = without damper (standard).
 DK1 = with damper (only with lateral spigot position (-S1 and S2), in the plenum box housing).
 DK2 = With damper and cable-operated adjustment (SZV) (only with connection from above (-S0), in the connection spigot).

09 - Rubber lip seal

GD0 = without rubber lip seal (standard)
 GD1 = with rubber lip seal

10 - Insulation

I0 = without insulation (standard).
 Ii = with internal insulation.
 Ia = with external insulation.

11 - Height of plenum box

KHS = standard height of plenum box
 xxx = height of plenum box in mm, freely selectable (minimum height [GH] with spigot position S1+S2 = spigot diameter $\varnothing D + 82$ mm / with spigot position S0 = 180 mm, always with 3 digits)

12 - Box neck

KVS = Standard box neck.
 xxx = box neck in mm, freely selectable (always with 3 digits).
 Can only be used with 1-slot models, 2-, 3- and 4-slot models don't have a box neck.

13 - Spigot position

S0 = spigot from above.
 S1 = Lateral spigot (standard).
 S2 = lateral spigot located on the opposite side (only possible for 1-slot models).

14 - Spigot diameter

SDS = spigot diameter standard.
 xxx = spigot diameter in mm, can be freely selected (always with 3 digits).

15 - Suspension

E0 = without riveting nut (standard)
 EM = with riveting nut

ORDER CODE CORNER ANGLE

01	02	03	04	05
Type	Diffuser	Model	Frame profile	Frame surface
Example				
EW	-24	-2	-R0	-ELOX

06	07	08
Dummy profile colour	Angle between sides	Additional profile
-B9005	-090	-Z0

Sample

EW-24-2-R0-ELOX-B9005-090-Z0

Corner angle for slot diffuser | for DSC | 2-slot | STANDARD frame profile | Frame surface: natural colour anodised aluminium | Dummy plate colour: aluminium painted similar to RAL colour 9005 (black) | Angle between sides: 90° | without additional profile

ORDER DETAILS

01 - Type

EW = corner angle for slot diffuser

02 - Diffuser

24 = for DSC

03 - Model

1 = 1-slot

2 = 2-slot

3 = 3-slot

4 = 4-slot

04 - Frame profile

R0 = Frame profile STANDARD

S0 = Narrow frame profile

P0 = Special frame profile

05 - Frame surface

ELOX = Natural colour anodised aluminium (standard).

9006 = Aluminium painted to RAL colour 9006 (white aluminium).

9010 = Aluminium painted to RAL colour 9010 (white).

xxxx = aluminium painted to a freely selectable RAL colour (at an extra charge, always with 4 digits).

06 - Dummy profile colour

B9005 = aluminium painted similar to RAL colour 9005 (black) (standard).

B9006 = aluminium painted similar to RAL colour 9006 (white aluminium).

B9010 = aluminium painted similar to RAL colour 9010 (white).

Bxxxx = aluminium painted to a freely selectable RAL colour (always with 5 digits).

07 - Angle between sides

090 = angle $\alpha = 90^\circ$ (standard).

xxx = angle α as required (value between 90° [090] and 170° [170] possible) (always with 3 digits).

08 - Additional profile

Z0 = without additional profile (standard).

SPECIFICATION TEXT

Highly inductive slot diffuser, free cross-section, resistance and sound power level constant in all blade positions, suitable for use in rooms with a height between 2.6 m and 4 m.

Volumetric flows in m³/h per m at:	35 dB(A)	40 dB(A)
DSC-1	131	156
DSC-2	203	242
DSC-3	234	279
DSC-4	253	302

Supply air model with pivoting air deflection blades in support profile shape made of plastic material (hard PVC):

- Colour similar to RAL 9005 (black, standard) (-**L9005**).
- Colour similar to RAL 9006 (white aluminium) (-**L9006**).
- Colour similar to RAL 9010 (white) (-**L9010**).
- painted to a freely selectable RAL colour (-**Lxxxx**)

Product: SCHAKO type **DSC-...-Z-...**

Return air model without air deflection blades (-**00000**), with perforated plate made of sheet steel painted to RAL 9005 (black), as cover screen.

Product: SCHAKO type **DSC-...-A-...**

Model (number of slots):

- 1-slot (-**1**)
- 2-slot (-**2**)
- 3-slot (-**3**)
- 4-slot (-**4**)

Frame made of extruded aluminium profile, consisting of:

- **Frame profile:**
 - Standard frame profile (-**R0**).
 - Narrow frame profile (-**S0**).
 - Special frame profile (-**P0**).
- **Frame surface:**
 - natural colour anodised (standard, -**ELOX**).
 - painted to RAL colour 9006 (white aluminium, -**9006**).
 - painted to the colour RAL 9010 (white, -**9010**).
 - painted to a freely selectable RAL colour (-**xxxx**) (at an extra charge, always with 4 digits).

Blade position for air jet:

- Without blades, for return air, with perforated plate (-**0**)
- With vertical throw (-**V**)
- one-way horizontal throw on the left (-**L**)
- one-way horizontal throw to the right (-**R**)
- two-way horizontal throw (-**B**)
- multi-directional flow (-**D**)

Length / Model:

Single design (-N)

- 1000 mm (-**N-01000**)
- 1500 mm (-**N-01500**)
- Length in mm, can be freely selected (-**N-xxxxx**, always with 5 digits)

Band design (-B)

- Length in mm, as band (-**B-xxxxx**)
- Available lengths according to SCHAKO standard for band design. With connecting pins, supplied loose (2 for each connection)

Mounting:

- without connection (-**00**)
 - Only possible without plenum box and without hit-and-miss damper.
- Permanent connection with plenum box (-**FV**)
 - Only possible with plenum box.
 - As standard for the models DSC-R0, DSC-S0 and DSC-P0.
 - The slot diffuser is permanently connected to the plenum box.
- Concealed mounting with plenum box (-**VM**)
 - Only possible with plenum box.
 - Possible for the models DSC-R0 / DSC-P0 and DSC-S0-Z2 (with additional profile).
 - Not possible for the models DSC-S0-Z0 / DSC-S0-Z1 / DSC-S0-Z3.
 - The slot diffuser is screwed to the pole brace in the plenum box housing with concealed screws.
 - Frame with foam gasket.
 - Plenum box supplied loose from the factory.
- Mounting with counter pole brace (-**GT**)
 - Only possible without plenum box.
 - Screws and clamp straps are supplied loose (2 pieces).
 - Pole brace traps consisting of folded galvanised sheet steel and pole brace made of extruded aluminium profile with DIN thread.
 - Possible for the models DSC-R0 / DSC-P0 and DSC-S0-Z2 (with additional profile).
 - Not possible for the models DSC-S0-Z0 / DSC-S0-Z1 / DSC-S0-Z3.
 - The slot diffuser is screwed to the counter pole brace (pole brace strap) with concealed screws (included in delivery).
 - For mounting, access on the rear is required!
- Mounting with clamp strap (-**KB**)
 - Only possible without plenum box.
 - Screws and clamp straps are supplied loose (2 pieces).
 - Clamp strap made of galvanised sheet steel.
 - Possible for the models DSC-R0 / DSC-P0 and DSC-S0-Z2 (with additional profile).
 - Not possible for the models DSC-S0-Z0 / DSC-S0-Z1 / DSC-S0-Z3.
 - The slot diffuser is screwed to the clamp strap with concealed screws (included in delivery).
 - For mounting, access on the rear is not required!
- Screw mounting (-**SM**)
 - Only possible without plenum box.
- Screws must be provided on site
 - Possible for the models DSC-R0 and DSC-P0.
 - Not possible for the model DSC-S0.
 - The slot diffuser is fixed with visible screws.
- Mounting with suspension lugs (-**AL**)
 - Only possible without plenum box.
 - 4 pieces, supplied loose.
 - Possible for the models DSC-R0 and DSC-P0.
 - Not possible for the model DSC-S0.
 - The slot diffuser is fastened to 4 suspension brackets
 - Suspension lug made of galvanised sheet steel, with holes for hook mounting.

Accessories:

- End pieces (-E0 / -ES / -EB / -EL / -ER)
 - without end piece (-E0) (standard).
 - with end pieces:
 - Supplied loose (-ES, pair) (standard).
 - Mounted ex works on both sides (-EB).
 - Mounted ex works on the left side (-EL).
 - Mounted ex works on the right side (-ER).
 Made of aluminium (same colour as frame).
- Additional profile (-Z0 / -Z1 / -Z2 / -Z3)
 - Without additional profile (-Z0) (standard).
- With additional profile (only possible for DSC-S0):
 - Z I (-Z1): connection of ceiling panels.
 - Z II (-Z2): connection of panelled ceilings.
 - Z III (-Z3): connection of ceiling panels.
 Made of aluminium (same colour as frame).
- Dummy piece (-BS0 / -BS1)
 - without dummy piece (-BS0) (standard).
 - with dummy piece (-BS1):
 - made of sheet steel painted to RAL 9005 (black).
 - only possible without plenum box and hit-and-miss damper.
 - Mounting only possible with suspension lugs (-AL, standard in connection with active diffuser DSC-...-FV-...), counter pole brace (-GT) or clamp strap (-KB).
- Hit-and-miss damper (-SN / -SS)
 - without hit-and-miss damper (-SN) (standard).
 - with hit-and-miss damper (-SS).
 - made of electrolytically galvanised sheet steel.
 - only possible without plenum box.
 - Mounting:
 - DSC-R0 / DSC-P0:
 - with screw mounting (-SM, standard)
 - mounting with counter pole brace (-GT)
 - DSC-S0:
 - Screw mounting not possible.
 - mounting with counter pole brace (-GT)
 - Only possible for models with additional profile -Z2. Not possible for models without additional profile and models with additional profiles -Z1 and -Z3.
- Plenum box (-ASK-24), made of galvanised sheet steel (-SV), with fixing lugs, without riveting nut (-E0, standard) or with riveting nut (-EM).
 - Model (number of slots):
 - 1-slot (-1)
 - 2-slot (-2)
 - 3-slot (-3)
 - 4-slot (-4)
 - Single / band design:
 - Single design (-N, length of box max. 1500 mm)
 - Band design (-B, available lengths according to SCHAKO standard for band design)
 - Length:
 - 1000 mm (-01000)
 - 1500 mm (-01500)
 - length in mm, freely selectable (-xxxxx, always with 5 digits)
 - Mounting of box:
 - Permanent connection (-FV) (standard).
 - Concealed mounting (-VM) (only possible for the models DSC-...-R0 / DSC-...-P0 and DSC-...-S0-...-Z2).
 - without fastening (only possible without diffuser) (-00).
- Material:
 - Galvanised sheet steel (-SV) (standard).
- Damper:
 - Without damper (-DK0) (standard).
 - With damper made of galvanised sheet steel, adjustable, for simple air volume regulation:
 - In the plenum box housing (with lateral spigot position S1 and S2) (-DK1).
 - In the connection spigot, with cable-operated adjustment (with spigot position from above S0) (-DK2).
- Rubber lip seal:
 - Without rubber lip seal (-GD0)
 - With rubber lip seal (-GD1) made of special rubber, at the connection spigot.
- Insulation:
 - Without insulation (-I0)
 - with internal insulation (-Ii), thermal insulation inside the plenum box.
 - with external insulation (-Ia), thermal insulation at the outside of the plenum box.
- Height of plenum box:
 - Standard height of plenum box (-KHS).
 - height of plenum box in mm, freely selectable (-xxx) (minimum height [GH] with spigot position S1+S4 = spigot diameter $\varnothing D + 82$ mm / with spigot position S0 = 180 mm, always with 3 digits).
- Box neck:
 - Standard box neck (-KVS)
 - box neck in mm, freely selectable (-xxx) (minimum height 45-200 mm, always with 3 digits)
- Spigot position:
 - Spigot from above (-S0).
 - Lateral spigot (-S1) (standard).
 - Lateral spigot located on the opposite side (-S2) (only possible for 1-slot models)
- Spigot diameter:
 - Standard spigot diameter (-SDS).
 - Spigot diameter in mm, freely selectable (-xxx, always with 3 digits).
- Suspension:
 - Without riveting nut (-E0).
 - With riveting nut (-EM), made of brass.
- With air diffuser plate made of galvanised steel, only for models with spigot from above.
- Corner angle (-EW-24), frame and dummy profile made of extruded aluminium profile. With 4 fishplates (-VL, included in delivery) made of aluminium (same colour as frame), supplied loose. Mounting with suspension lugs (-AL), supplied loose.
 - Model (number of slots):
 - 1-slot (-1)
 - 2-slot (-2)
 - 3-slot (-3)
 - 4-slot (-4)
 - Frame profile:
 - Standard frame profile (-R0).
 - Narrow frame profile (-S0).
 - Special frame profile (-P0).
 - Frame surface:
 - Natural colour anodised aluminium (standard, -ELOX).
 - Aluminium:
 - painted to RAL colour 9006 (white aluminium, -9006).
 - painted to the colour RAL 9010 (white, -9010).
 - painted to a freely selectable RAL colour (-xxxx) (always with 4 digits).

- Dummy profile colour:
 - Aluminium painted similar to RAL colour 9005 (black) (-B9005) (standard).
 - Aluminium painted similar to RAL colour 9006 (white aluminium) (-B9005).
 - Aluminium painted similar to RAL colour 9010 (white) (-B9010).
 - Aluminium painted to a freely selectable RAL colour (Bxxxx) (always with 5 digits).
- Angle between sides:
 - 90° (-090).
 - Angle as required (-xxx), values between $\alpha = 90^\circ$ (-090, standard) and 170° (-170) are possible.
- Additional profile:
 - Without additional profile (-Z0) (standard).