



AQUARIS SILENT

Fan coil unit

GENERAL INFORMATION

The replacement of the fan coil unit and commissioning of the device must be carried out by qualified skilled personnel only in compliance with the current regulations.

The replacement of the motor will void the device warranty.

The device should be completely inspected after replacing the motor.

EXPLANATION OF SYMBOLS



Caution, electric power



Safety information



Work on the electrical system may only be carried out by skilled electricians.

Before carrying out work on live parts of electrical systems and electrical equipment, disconnect them from the power supply and secure them against being reconnected for the duration of the work.

Observe these 5 safety regulations:

1. Disconnect it.
2. Secure it against being switched on again.
3. Ensure absence of voltage.
4. Earth and short-circuit it.
5. Cover and lock adjacent live part.

REQUIRED PROTECTIVE EQUIPMENT



Safety goggles

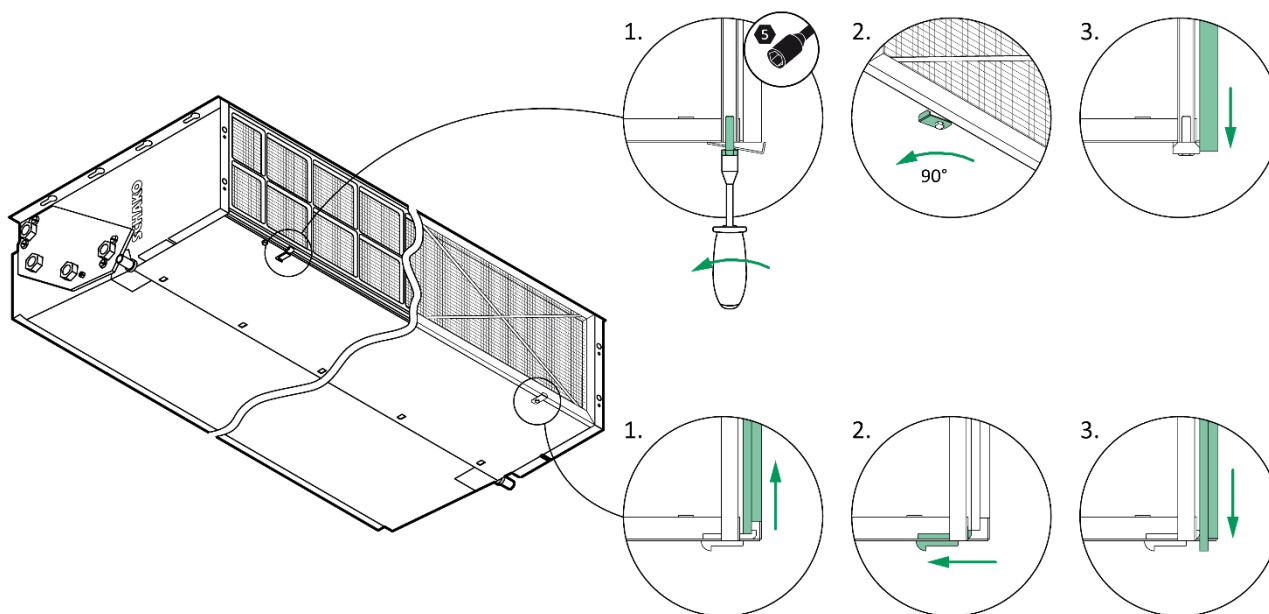


Safety gloves



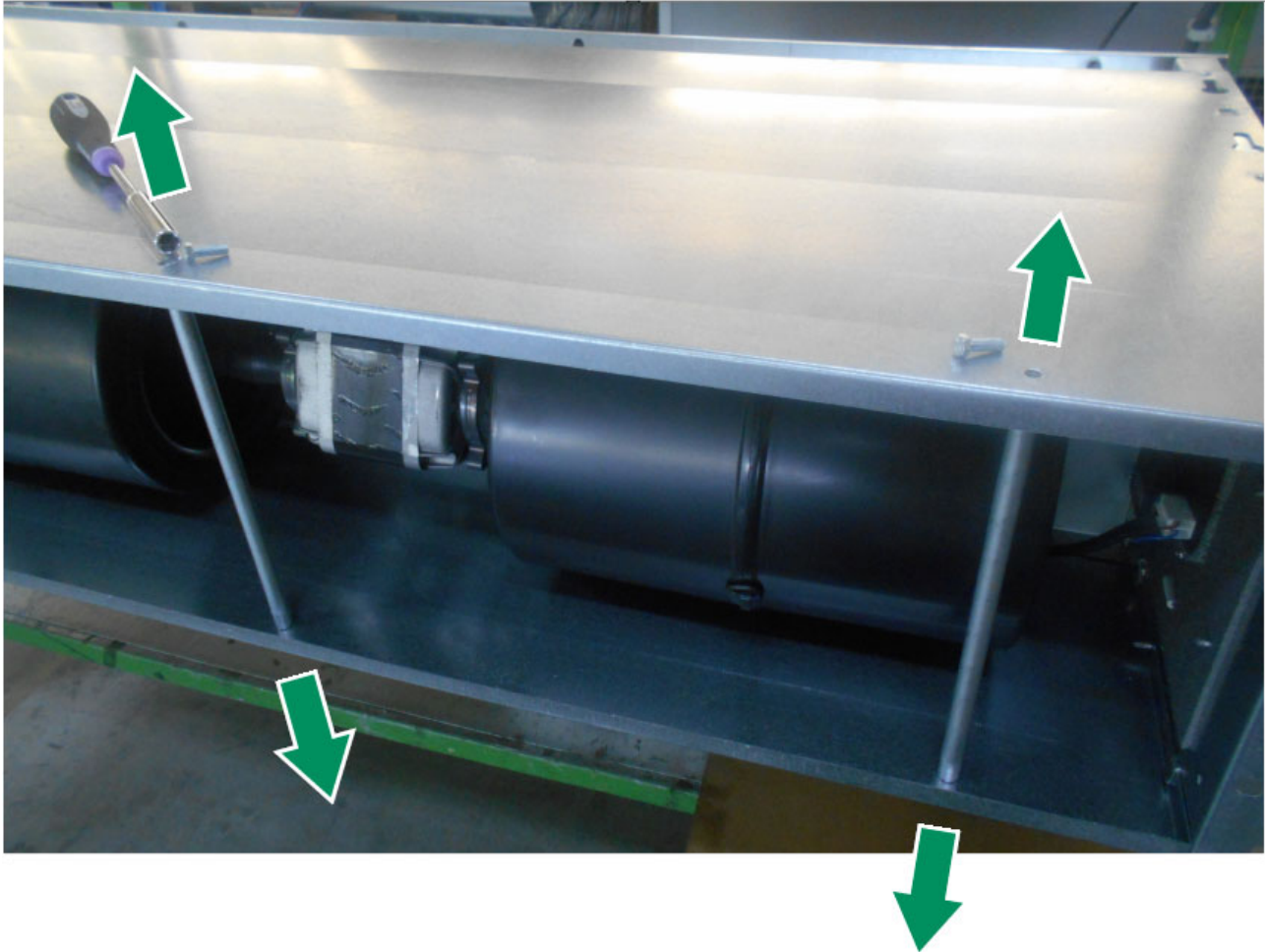
Safety shoes

1 FILTER REMOVAL



2 UNSCREWING AND REMOVING CONNECTING TUBES

NW 10	NW 20	NW 30	NW 40	NW 50
2	3	4	4	5

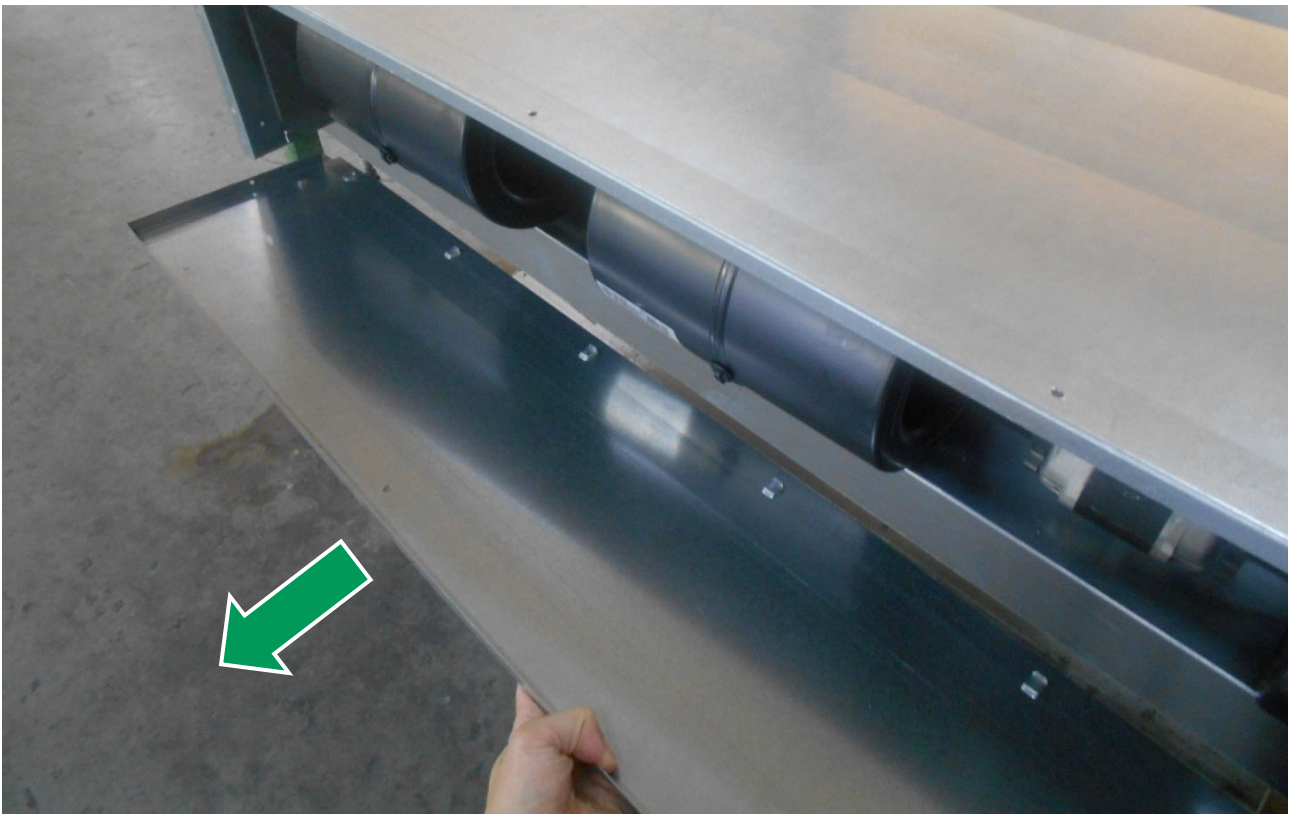


3 BASE PLATE

Unscrew (x2/side).

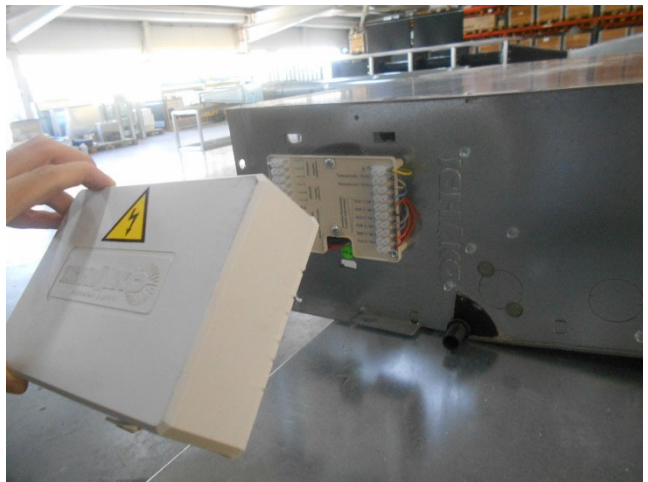


Remove the base sheet.



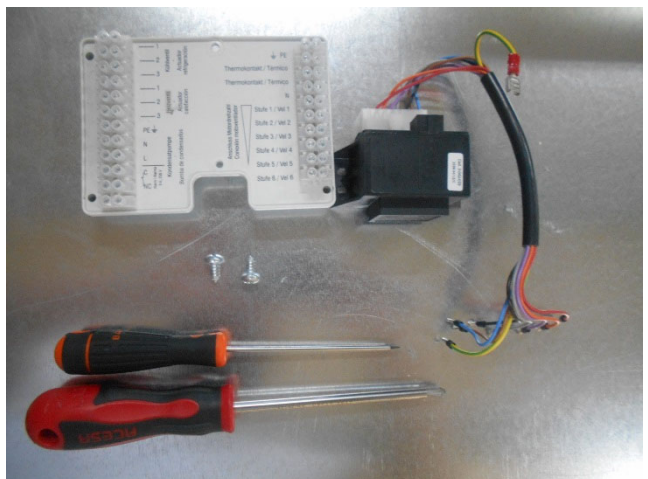
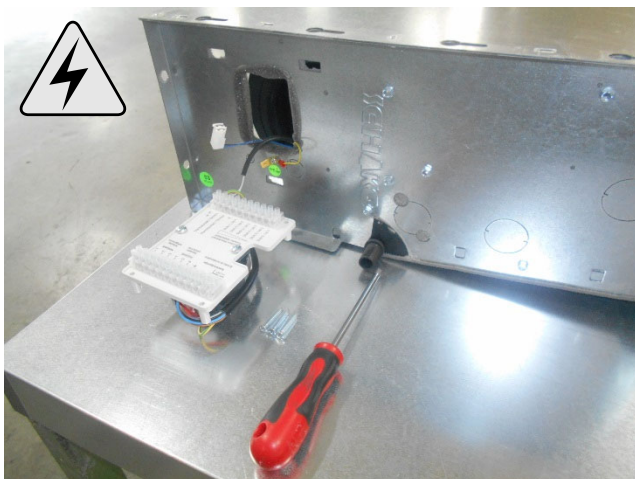
4 COVER OF ELECTRICAL JUNCTION BOX

Remove the protection box (clip or screw).



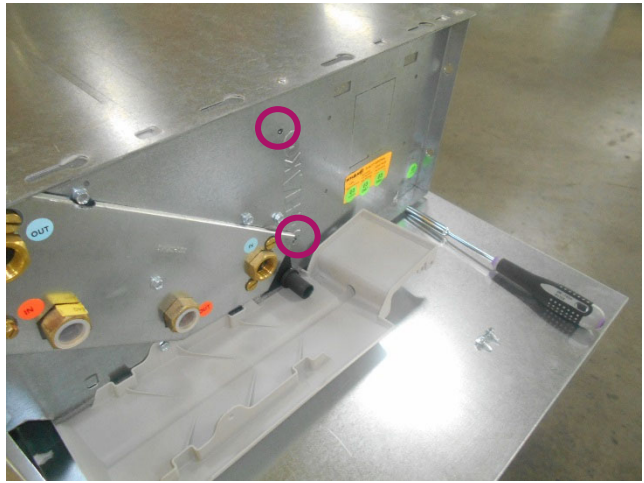
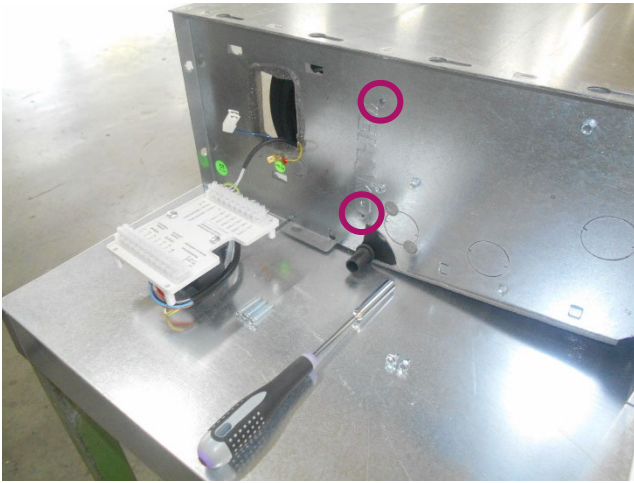
5 CONNECTING PLATE

Unscrew the plate (x3) and disconnect the wiring. Remove the transformer.



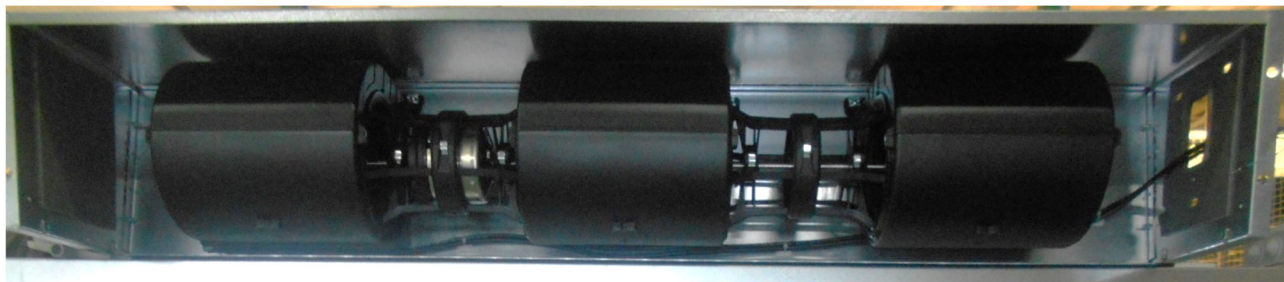
6 SC/SP MOTOR

Unscrew the plate with motor fan (x2/side) and remove the unit downward.



7 EC MOTOR

Install the new EC fan unit and screw it down.

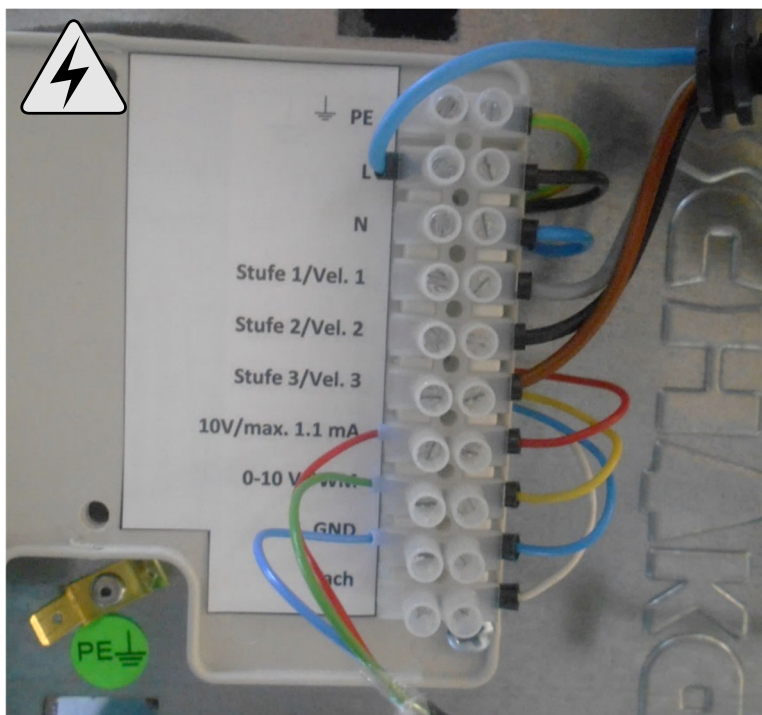


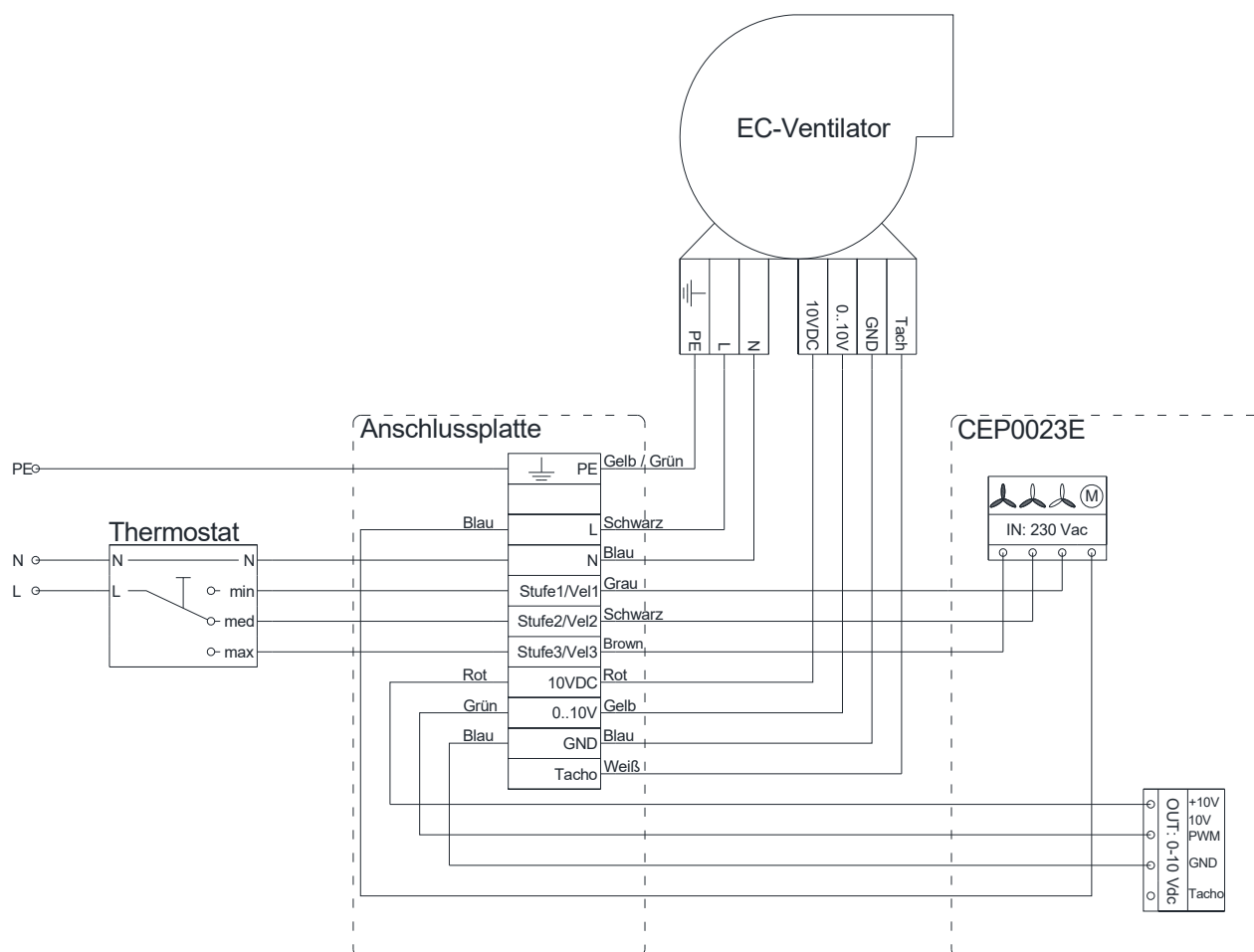
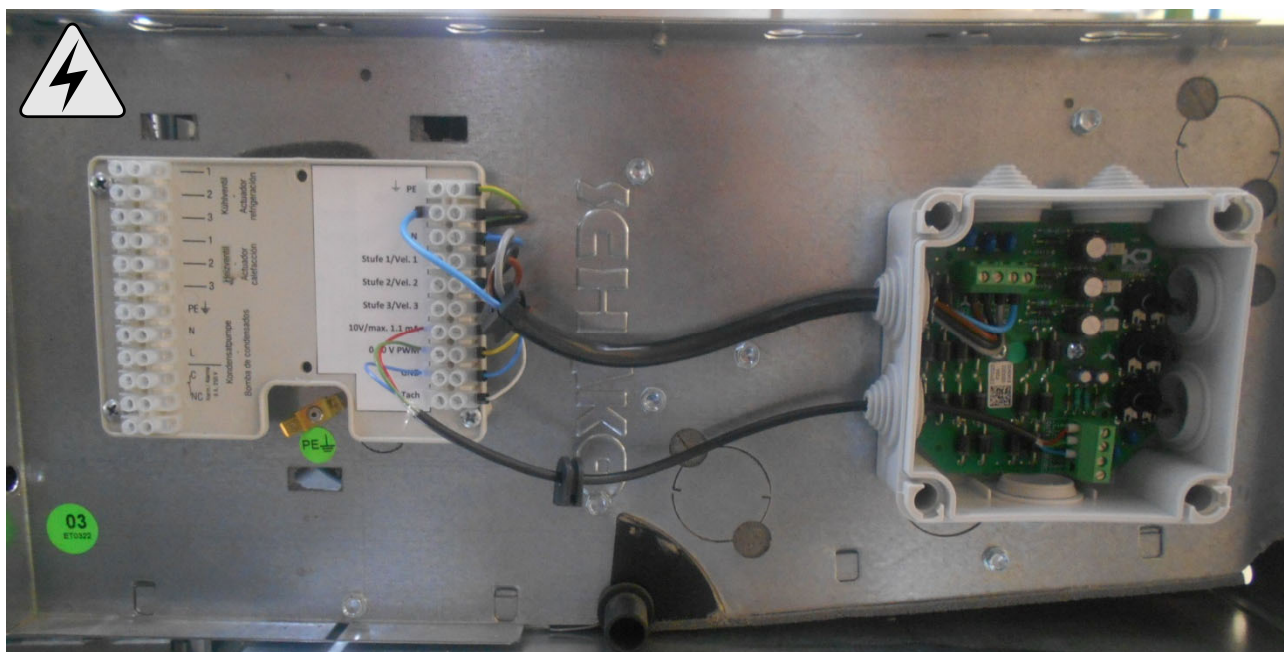
8 BOX INTERFACE EC

Attach the new sticker as shown in the picture.

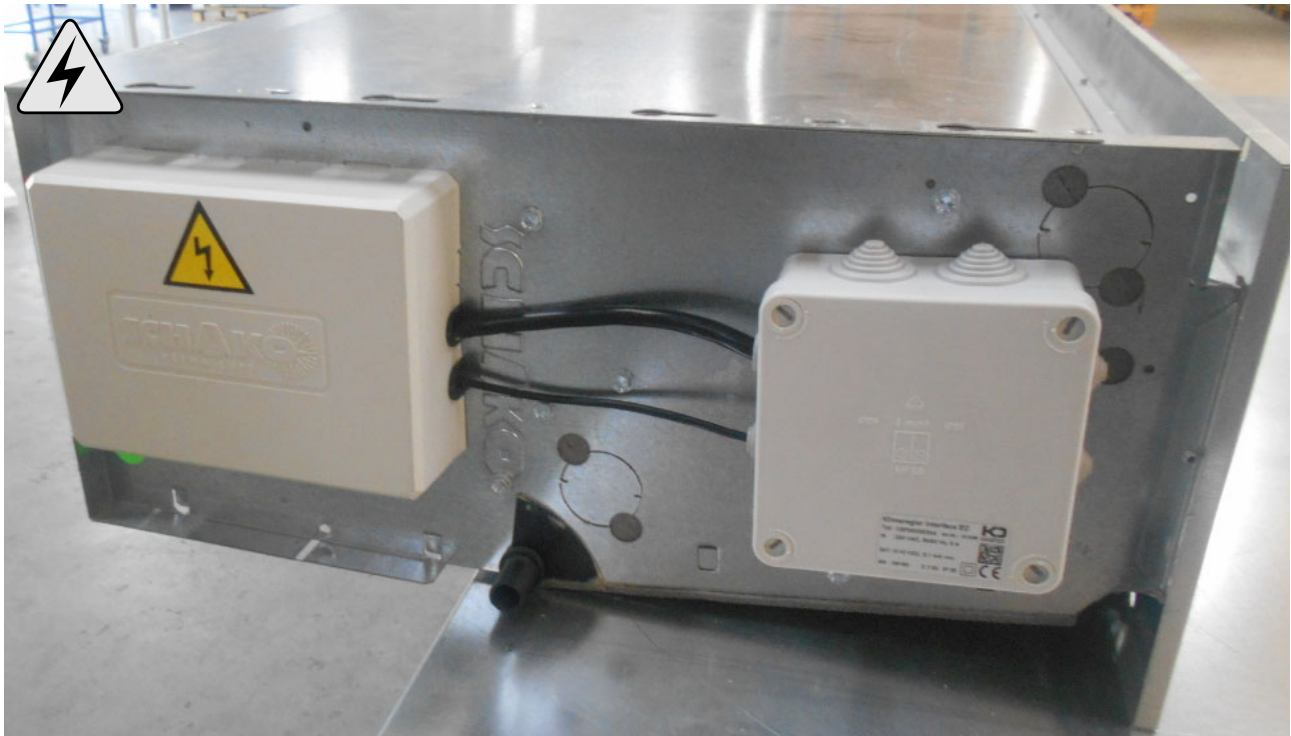


Wire the connections.





Refit the cover.



9 INSTALLATION. CARRYING OUT STEPS 3, 2, 1

Install the base sheet, connecting tubes and filter.

