



The best for the planner

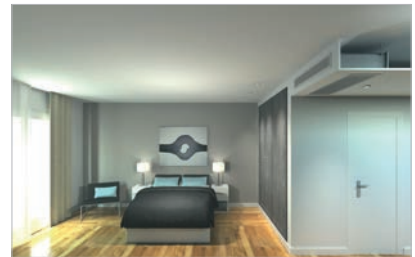
- A system family for all requirements, not only for new buildings, but also for reconstructions and renovations
- Consistently homogeneous and, if required, high performance values for all air-conditioning cases
- Extensive system consulting and perfect customer service
- Procurement security guaranteed for many years

The best for the system builder

- Reliable transport all over Europe
- Perfect logistics including packaging and delivery
- Uniform assembly using uniform tools
- Optimised for environmental protection, resulting in less packaging material at the construction site
- On-site service possible provided by experienced SCHAKO staff

The best for the system operator

- Trouble-free operation over many years
- Discreet and extremely efficient function
- Minimised maintenance costs, often even maintenance-free
- Uniformly elegant and markedly function-optimised product design
- Harmonic visibility through many design versions



DISA300

[for ceiling]

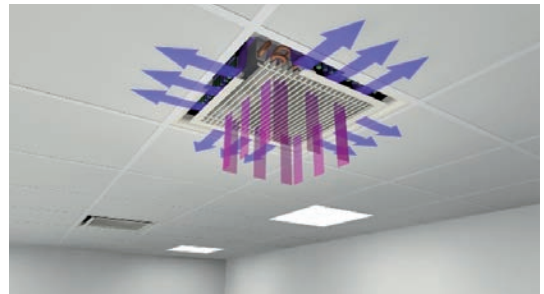
- Easy mounting and minimum maintenance costs
- Length: 900 to 3000 mm in 300-mm steps, in connection with a standard width of 298 mm; freely suspended: 600 mm
- For installation heights from 2.6 to 4 metres
- Supply air- V_{prim} : 12 to 87 m³/h/metre
- Cooling- ΔT_{prim} 8K / ΔT_{Winlet} 8K: 270 to 550 W/metre
- Heating- ΔT_{prim} iso / ΔT_{Winlet} 20K: up to 770 W/metre (for 4-pipe)
- Secondary air grille can be made to rotate without tools for easy cleaning
- Secondary air grille in 5 design versions



DISA360

[for ceiling]

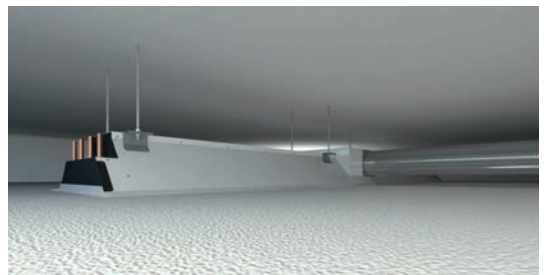
- Easy mounting and minimum maintenance costs
- Dimensions: 600 x 600 mm or 600 x 1200 mm; freely suspended: 900 x 900 mm or 900 x 1500 mm
- For installation heights from 2.6 to 4 metres
- Supply air- V_{prim} : 20 to 270 m³/h
- Cooling- ΔT_{prim} 8K / ΔT_{Winlet} 8K: 260 to 1780 W/metre
- Heating- ΔT_{prim} iso / ΔT_{Winlet} 20K: up to 1300 W/metre
- Secondary air grille can be made to rotate without tools for easy cleaning
- Secondary air grille in 5 design versions



DISA601

[for ceiling]

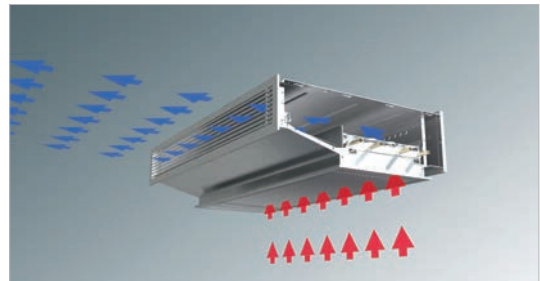
- Easy mounting and minimum maintenance costs
- Length: 900 to 3000 mm in 300-mm steps, in connection with a standard width of 592 | 597 | 617 | 622 mm; freely suspended: 900 mm
- For installation heights from 2.6 to 4 metres
- Supply air- V_{prim} : 20 to 150 m³/h/metre
- Cooling- ΔT_{prim} 8K / ΔT_{Winlet} 8K: 335 to 1300 W/metre
- Heating- ΔT_{prim} iso / ΔT_{Winlet} 20K: up to 940 W/metre (for 4-pipe)
- Secondary air grille can be made to rotate without tools for easy cleaning
- option: infinitely variable induction nozzles or swing-type register



DISAH

[for ceiling/
corridor/wall]

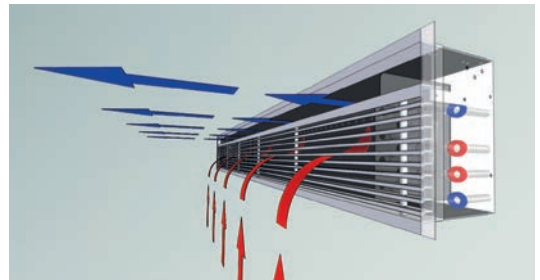
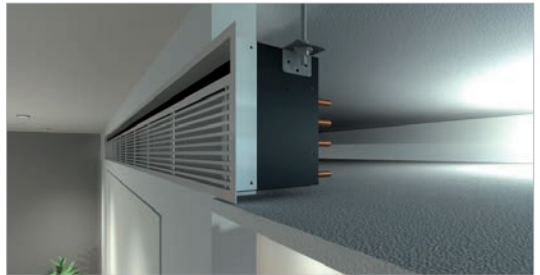
- Easy mounting and minimum maintenance costs
- Length: 900 | 1200 | 1500 mm
- For installation heights from 2.6 to 4 metres
- Supply air- V_{prim} : 30 to 300 m³/h
- Cooling- ΔT_{prim} 8K / ΔT_{Winlet} 10K: 290 to 2250 W
- Heating- ΔT_{prim} iso / ΔT_{Winlet} 20K:
for 2-pipe: up to 2682 W
for 4-pipe: up to 1380 W
- Supply air grille and secondary air grille in 3 design versions each



DISAW

[for wall]

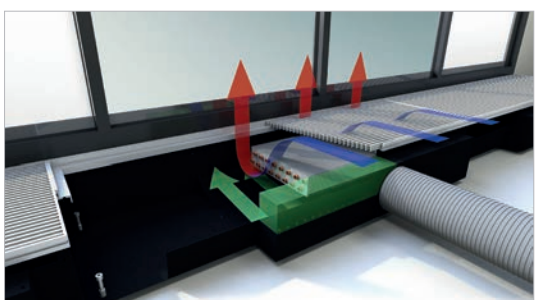
- Easy mounting and minimum maintenance costs
- Lengths: 900 to 3000 mm in 300-mm steps, can be combined with extension parts and return air element, Height: 200 mm, optionally with condensate pan: 240 mm
- For installation heights from 2.6 to 4 metres
- Supply air- V_{prim} : 10 to 110 m³/h/metre
- Cooling- ΔT_{prim} 8K / ΔT_{Winlet} 10K: 250 to 690 W/metre; ΔT_{prim} 8K / ΔT_{Winlet} 14K: 330 to 820 W/metre
- Heating- ΔT_{prim} iso / ΔT_{Winlet} 20K:
for 2-pipe: 220 to 580 W/metre
for 4-pipe: 180 to 430 W/metre
- Secondary air grille in 5 design versions



DISAB

[for floor]

- Sizes: 1000 | 1150 | 1300 | 1450 | 1600 and 1750 mm, combinable, also available with releases, dummy pieces and corner pieces
- Installation height: 190 mm; width: 375 mm
- Supply air- V_{prim} : 15 to 80 m³/h/metre
- Cooling- ΔT_{prim} 8K / ΔT_{Winlet} 10K: 200 to 680 W/metre
- Heating- ΔT_{prim} iso / ΔT_{Winlet} 20K:
for 2-pipe: 350 to 980 W/metre
for 4-pipe: 255 to 520 W/metre
- Elegant and non-slip aluminium grilles oriented longitudinally or transversely (roll-down grille) Easy to clean
- Secondary air grille in 2 design versions





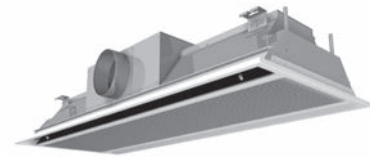
DISA300

- **Ceiling induction diffuser**
- For integrated and positive-locking installation in suspended ceilings or in freely suspended ceiling sails as band or single unit
- For offices, meeting rooms, shopping malls, hospital rooms, etc.
- Option: with air deflection blades and as supply air/return air combination
- Ideal for long air-conditioning distances, can be combined to form several parts



DISA360

- **Ceiling induction diffuser**
- For integrated and positive-locking installation in grid ceilings or in freely suspended ceiling sails
- For offices, meeting rooms, hotels, schools, hospital rooms, shops, etc.
- Option: with air deflection blades, rotating register with flexible connections possible
- Ideal as air-conditioning island in the room centre, due to four-way-throw



DISA601

- **Ceiling induction diffuser**
- For integrated and positive-locking installation either in suspended ceilings or in freely suspended ceiling sails as band or single unit
- For offices, meeting rooms, shopping malls, hospital rooms, etc.
- Option: with air deflection blades and as supply air/return air combination
- Ideal for long air-conditioning distances, can be combined to form several parts



DISAH

- **Corridor/Ceiling induction diffuser**
- For integrated installation in walls, entrance corridors or ceiling panelling in rooms without suspended false ceiling and low fresh air demand
- For offices, meeting rooms, hotels, schools, hospital rooms, shops, etc.
- Option: rotating register with flexible connections
- Optimised for SCHAKO supply and secondary air grilles PA | IB | AL



DISAW

- **Wall Induction Diffuser**
- For integrated installation in walls or in ceiling panelling in rooms without suspended false ceiling and low fresh air demand
- For offices, meeting rooms, hotels, schools, hospital rooms, shops, etc.
- Option: with air deflection blades and as supply air/return air combination
- Also ideal for reconstructions in existing systems



DISAB

- **Floor induction diffuser**
- For integrated installation in floors in rooms without false ceiling (e.g. room-high glazing), admitting air-conditioning only via the floor
- For offices, meeting rooms, hotels, schools, hospital rooms, shops, etc.
- Option: with roll-down grille, easy to clean
- Ideal in combination with thermal activation of building structures